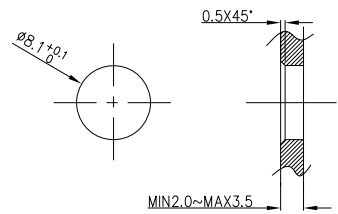
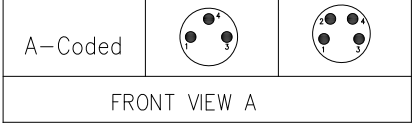
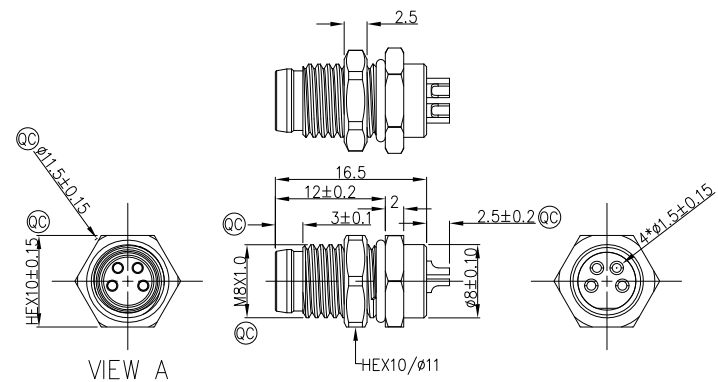


1	2	3	4	5	6	7	8			
Circuits	3Circuits	4Circuits			REV	LOCATIONS	DESCRIPTION	DATE	REVISER	APPD
A-Coded					0		New Release	4/DEC	LAM	FRANK



Note:
 1. Ⓢ Important Dimension
 2. Waterproof Rate: IP68
 3. This product must meet IEC61076-2-104
 4. This product must meet 2011/65/EU ROHS compliance.
 5. Note tolerances: ±0.20
 6. Use torque values 1Nm

Recommended Panel Cut-Out



VIEW A

Connector locking system	Screw
Wiring type	Solder
Degree of protection	IP68(in mated condition)
Mechanical operation	> 100 mating cycles
Upper temperature	105°C
Lower temperature	-40°C
Pollution degree	3
Overvoltage categorie	II
Material group	II
Material of contact	CuZn (Messing/brass)
Contact plating	Au
Material of contact body	PA
Sealing	EPDM
Material of housing	Brass nickel plated

Ordering Information

FM8S T04 25 - X XX P 1 04 W 00
 1 2 3 4 5 6 7 8 9

1 Series Name FM8S-M8 Socket	2 Mounting thread T04-front fastened M8X1.0	3 Distinction No. 25	4 Coded A-A CODED	5 Circuits 03-3Circuits 04-4Circuits	6 Contact P-Plug
---------------------------------	---	-------------------------	----------------------	--	---------------------

7 Plating 1-Ep Au	8 Thickness Plating 04-0.1µm	9 Wire type W-welding
----------------------	---------------------------------	--------------------------

Pin Assignments Front View	Rated Voltage	Rated impulse Voltage	Rated Current (40°C)	Contact resistance	Insulation resistance
	60V DC	1500V	4A	≤3mΩ	≥100MΩ
	60V DC	1500V	4A	≤3mΩ	≥100MΩ

 THIRD ANGLE PROJECTION DESIGN UNITS Metric SCALE 2:1 SIZE A4	GENERAL TOLERANCES (UNLESS SPECIFIED)		APPROVE BY FRANK	DATE 4/DEC/23	PART NO. FM8ST0425-XXXP104W00	ITEM NO. FM8ST0425	 Building Technology Cornerstone REV 0 SHEET NO. 1/1
	X.±0.30	.X'±5'	CHECKED BY CHERRY	DATE 4/DEC/23	TITLE M8X1.0 male socket front fastened M8X1.0 Solder terminal [metal]		
	X.XX±0.20	.X'±2'	DRAWN BY LAM	DATE 4/DEC/23	THIS DRAWING CONTAINS INFORMATION THAT IS PROPRIETARY TO TXGA INDUSTRIAL ELECTRONICS(S,Z)CO.,LTD AND SHOULD NOT BE USED WITHOUT WRITTEN PERMISSION		
	X.XX±0.15	.XX'±1'					
X.XXX±0.10	.XXX'±0.5'						