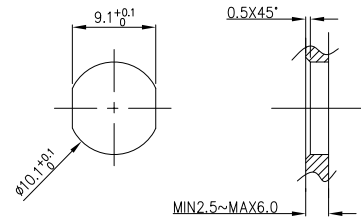
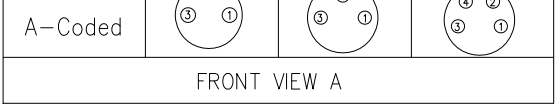
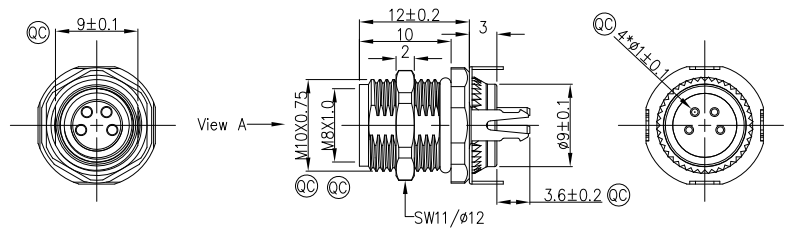
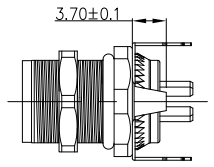


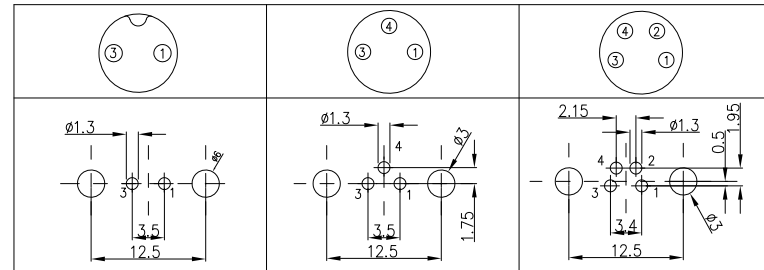
1	2	3	4	5	6	7	8			
Circuits	2Circuits	3Circuits	4Circuits		REV	LOCATIONS	DESCRIPTION	DATE	REVISER	APPD
A-Coded					0		New Release	4/DEC		FRANK



Note:
 1. Ⓞ Important Dimension
 2. Waterproof Rate: IP68
 3. This product must meet IEC61076-2-104
 4. This product must meet 2011/65/EU ROHS compliance.
 5. Not note tolerances: ±0.20
 6. Use torque values 1Nm



PCB Layout Thickness of PCB: ≤1.6mm 【Front view A】



Connector locking system	Screw
Wiring type	Through Hole
Degree of protection	IP68(in mated condition)
Mechanical operation	> 100 mating cycles
Upper temperature	105°C
Lower temperature	-40°C
Pollution degree	3
Overvoltage categorie	II
Material group	II
Material of contact	CuZn (Messing/brass)
Contact plating	Au
Material of contact body	PA
Sealing	EPDM
Material of housing	Brass nickel plated

Ordering Information

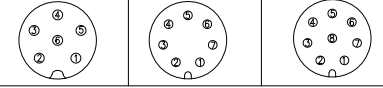
FM8S 1 T05 2 03 3 - X 4 XX 5 S 6 1 7 04 8 D 9 00

- 1 Series Name: FM8S-M8 Socket
- 2 Mounting thread: T05-Front fastened M10X0.75
- 3 Distinction No.: 03
- 4 Coded: A-A CODED, B-B CODED, D-D CODED
- 5 Circuits: 02-2Circuits, 03-3Circuits, 04-4Circuits, 05-5Circuits, 06-6Circuits, 07-7Circuits, 08-8Circuits
- 6 Contact: S-Socket
- 7 Plating: 1-Ep Au
- 8 Thickness Plating: 04-0.1μm
- 9 Wire type: D-Through Hole

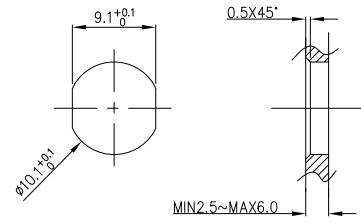
Pin Assignments Front View	Rated Voltage	Rated impulse Voltage	Rated Current (40°C)	Contact resistance	Insulation resistance
	60V DC	1500V	4A	≤3mΩ	≥100MΩ
	60V DC	1500V	4A	≤3mΩ	≥100MΩ
	60V DC	1500V	4A	≤3mΩ	≥100MΩ

THIRD ANGLE PROJECTION	GENERAL TOLERANCES (UNLESS SPECIFIED)		APPROVE BY	DATE	PART NO.	ITEM NO.	
	X.±0.30	.X'±5'	FRANK	4/DEC/23			
DESIGN UNITS Metric	X.X±0.20	.X'±2'	CHECKED BY	DATE	TITLE	FM8ST0503	Building Technology Cornerstone
	X.XX±0.15	.XX'±1'	CHERRY	4/DEC/23			
SCALE 2:1	X.XXX±0.10	.XXX'±0.5'	DRAWN BY LAM	DATE 4/DEC/23	M8X1.0 female socket 180° [THT] front fastened M10X0.75 Double section with shield		REV 0 SHEET NO. 1/3
THIS DRAWING CONTAINS INFORMATION THAT IS PROPRIETARY TO TXGA INDUSTRIAL ELECTRONICS(S,Z)CO.,LTD AND SHOULD NOT BE USED WITHOUT WRITTEN PERMISSION							

1	2	3	4	5	6	7	8			
Circuits	6Circuits	7Circuits	8Circuits		REV	LOCATIONS	DESCRIPTION	DATE	REVISER	APPD
A-Coded					0		New Release	4/DEC		FRANK

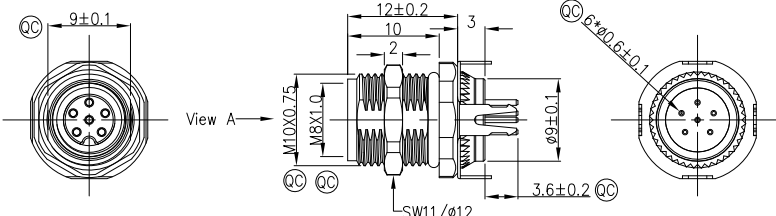
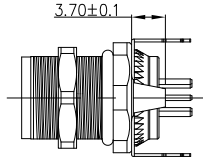


FRONT VIEW A

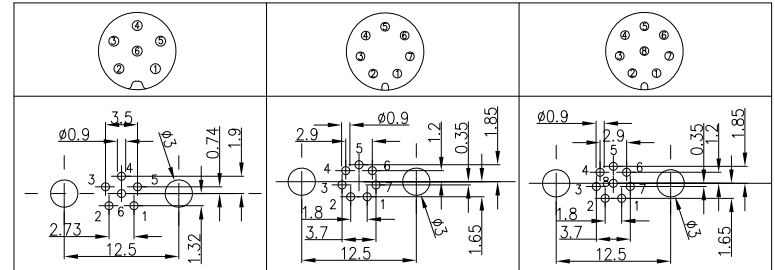


Recommended Panel Cut-Out

Note:
 1. Ⓞ Important Dimension
 2. Waterproof Rate: IP68
 3. This product must meet IEC61076-2-104
 4. This product must meet 2011/65/EU ROHS compliance.
 5. Not note tolerances: ±0.20
 6. Use torque values 1Nm



PCB Layout Thickness of PCB: ≤1.6mm 【Front view A】



Connector locking system	Screw
Wiring type	Through Hole
Degree of protection	IP68(in mated condition)
Mechanical operation	> 100 mating cycles
Upper temperature	105°C
Lower temperature	-40°C
Pollution degree	3
Overvoltage categorie	II
Material group	II
Material of contact	CuZn (Messing/brass)
Contact plating	Au
Material of contact body	PA
Sealing	EPDM
Material of housing	Brass nickel plated

Ordering Information

FM8S 1 T05 2 03 3 - X 4 XX 5 S 6 1 7 04 8 D 9 00 10

1 Series Name - 2 Mounting thread - 3 Distinction No. - 4 Coded - 5 Circuits - 6 Contact

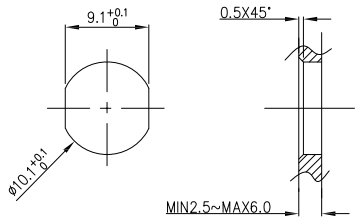
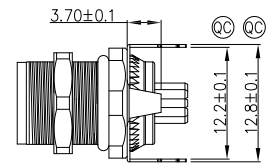
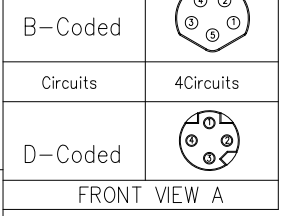
FM8S-M8 Socket T05-Front fastened M10X0.75 03 A-A CODED B-B CODED D-D CODED 02-2Circuits 03-3Circuits 04-4Circuits 05-5Circuits 06-6Circuits 07-7Circuits 08-8Circuits S-Socket

7 Plating - 8 Thickness Plating - 9 Wire type

1-Ep Au 04-0.1μm D-Through Hole

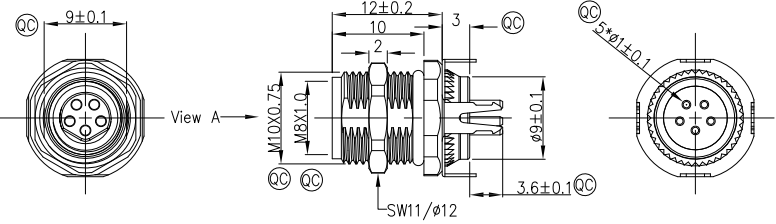
THIRD ANGLE PROJECTION	GENERAL TOLERANCES (UNLESS SPECIFIED)		APPROVE BY	DATE	PART NO.	ITEM NO.	
	X.±0.30	.X'±5'	FRANK	4/DEC/23			
DESIGN UNITS Metric	X.X±0.20	.X'±2'	CHECKED BY	DATE	TITLE	FM8ST0503	Building Technology Cornerstone
	X.XX±0.15	.XX'±1'	CHERRY	4/DEC/23			
SCALE 2:1	X.XXX±0.10	.XXX'±0.5'	DRAWN BY	DATE	THIS DRAWING CONTAINS INFORMATION THAT IS PROPRIETARY TO TXGA INDUSTRIAL ELECTRONICS(S.Z)CO.,LTD AND SHOULD NOT BE USED WITHOUT WRITTEN PERMISSION	REV 0	SHEET NO. 2/3
A4			LAM	4/DEC/23			

1	2	3	4	5	6	7	8			
Circuits	5Circuits				REV	LOCATIONS	DESCRIPTION	DATE	REVISER	APPD
B-Coded					0		New Release	4/DEC		FRANK
Circuits	4Circuits									
D-Coded										

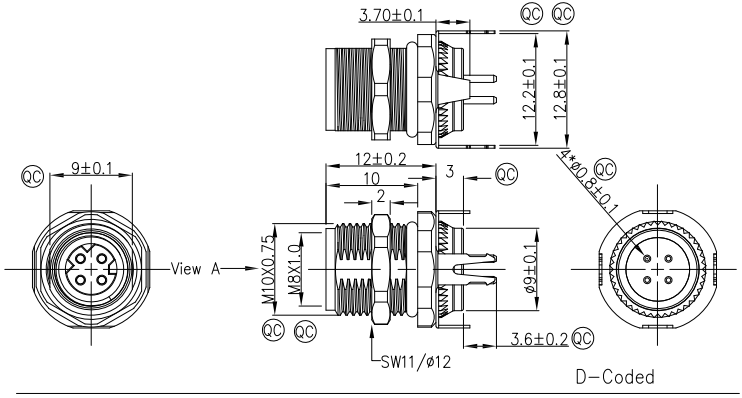


Recommended Panel Cut-Out

Note:
 1. Ⓞ Important Dimension
 2. Waterproof Rate: IP68
 3. This product must meet IEC61076-2-104
 4. This product must meet 2011/65/EU ROHS compliance.
 5. Not note tolerances: ±0.20
 6. Use torque values 1Nm

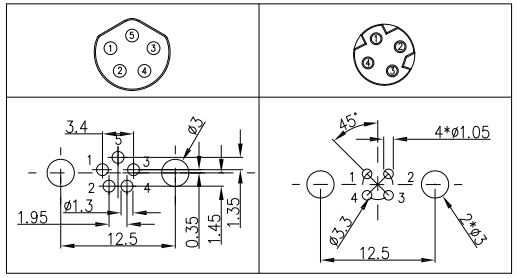


B-Coded



D-Coded

PCB Layout Thickness of PCB: ≤1.6mm 【Front view A】



Connector locking system	Screw
Wiring type	Through Hole
Degree of protection	IP68(in mated condition)
Mechanical operation	> 100 mating cycles
Upper temperature	105°C
Lower temperature	-40°C
Pollution degree	3
Overvoltage categorie	II
Material group	II
Material of contact	CuZn (Messing/brass)
Contact plating	Au
Material of contact body	PA
Sealing	EPDM
Material of housing	Brass nickel plated

Ordering Information

FM8S T05 03 - X XX S 1 04 D 00
 1 2 3 4 5 6 7 8 9

- 1 Series Name: FM8S-M8 Socket
- 2 Mounting thread: T05-Front fastened M10X0.75
- 3 Distinction No.: 03
- 4 Coded: A-A CODED, B-B CODED, D-D CODED
- 5 Circuits: 02-2Circuits, 03-3Circuits, 04-4Circuits, 05-5Circuits, 06-6Circuits, 07-7Circuits, 08-8Circuits
- 6 Contact: S-Socket

- 7 Plating: 1-Ep Au
- 8 Thickness Plating: 04-0.1μm
- 9 Wire type: D-Through Hole

Pin Assignments Front View	Rated Voltage	Rated impulse Voltage	Rated Currnt (40°C)	Contact resistance	Insulation resistance
	60V DC	1500V	4A	≤3mΩ	≥100MΩ
	63V DC	1500V	4A	≤3mΩ	≥100MΩ

 THIRD ANGLE PROJECTION DESIGN UNITS Metric SCALE 2:1 SIZE A4	GENERAL TOLERANCES (UNLESS SPECIFIED)		APPROVE BY FRANK	DATE 4/DEC/23	PART NO. FM8ST0503-XXS104D00	ITEM NO. FM8ST0503	 Building Technology Cornerstone
	X.±0.30	X.±5°	CHECKED BY CHERRY	DATE 4/DEC/23			
	X.X±0.20	.X'±2°	DRAWN BY LAM	DATE 4/DEC/23	TITLE: M8X1.0 female socket 180° [IHT] front fastened M10X0.75 Double section with shield		
	X.XX±0.15	.XX'±1°			THIS DRAWING CONTAINS INFORMATION THAT IS PROPRIETARY TO TXGA INDUSTRIAL ELECTRONICS(S.Z)CO.,LTD AND SHOULD NOT BE USED WITHOUT WRITTEN PERMISSION		
X.XXX±0.10	.XXX'±0.5°				REV 0	SHEET NO. 3/3	