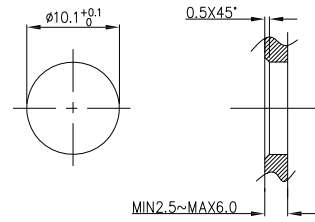
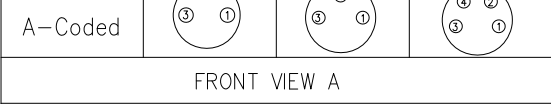
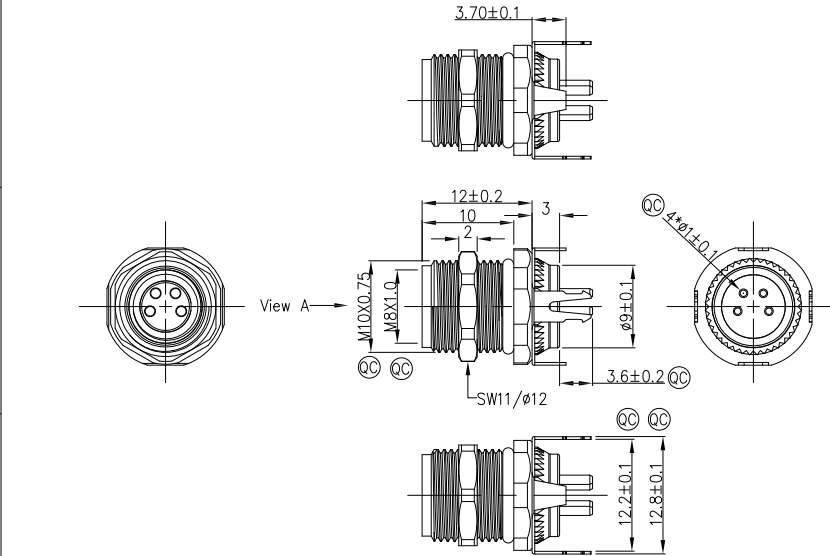


1	2	3	4	5	6	7	8		
Circuits	2Circuits	3Circuits	4Circuits	REV	LOCATIONS	DESCRIPTION	DATE	REVISER	APPD
A-Coded				0		New Release	4/DEC		FRANK

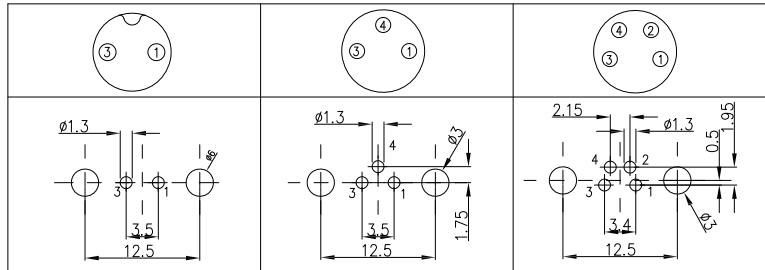


Recommended Panel Cut-Out

- Note:
- ① Important Dimension
  - Waterproof Rate: IP68
  - This product must meet IEC61076-2-104
  - This product must meet 2011/65/EU ROHS compliance.
  - Not note tolerances:  $\pm 0.20$
  - Use torque values 1Nm



PCB Layout Thickness of PCB:  $\leq 1.6\text{mm}$  【Front view A】



Connector locking system	Screw
Wiring type	Through Hole
Degree of protection	IP68(in mated condition)
Mechanical operation	> 100 mating cycles
Upper temperature	105°C
Lower temperature	-40°C
Pollution degree	3
Overtoltage categorie	II
Material group	II
Material of contact	CuZn (Messing/brass)
Contact plating	Au
Material of contact body	PA
Sealing	EPDM
Material of housing	Brass nickel plated

Ordering Information

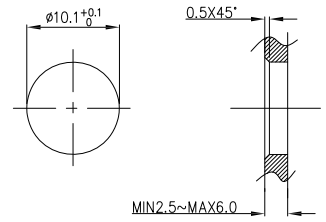
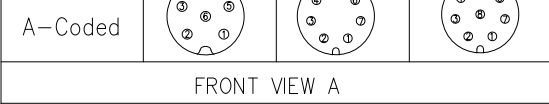
FM8S 1 T05 2 07 3 - X 4 XX 5 S 6 1 7 04 8 D 9 00

- |                                 |   |                               |  |  |                        |
|---------------------------------|---|-------------------------------|--|--|------------------------|
| 1 Series Name<br>FM8S-M8 Socket | 2 Mounting thread<br>T05-Front fastened<br>M10X0.75 | 3 Distinction No.<br>07       | 4 Coded<br>A-A CODED<br>B-B CODED<br>D-D CODED | 5 Circuits<br>02-2Circuits<br>03-3Circuits<br>04-4Circuits<br>05-5Circuits<br>06-6Circuits<br>07-7Circuits<br>08-8Circuits | 6 Contact<br>S- Socket |
| 7 Plating<br>1-Ep Au            | 8 Thickness Plating<br>04-0.1 $\mu\text{m}$         | 9 Wire type<br>D-Through Hole |  |  |                        |

Pin Assignments Front View	Rated Voltage	Rated impulse Voltage	Rated Current (40°C)	Contact resistance	Insulation resistance
	60V DC	1500V	4A	$\leq 3\text{m}\Omega$	$\geq 100\text{M}\Omega$
	60V DC	1500V	4A	$\leq 3\text{m}\Omega$	$\geq 100\text{M}\Omega$
	60V DC	1500V	4A	$\leq 3\text{m}\Omega$	$\geq 100\text{M}\Omega$

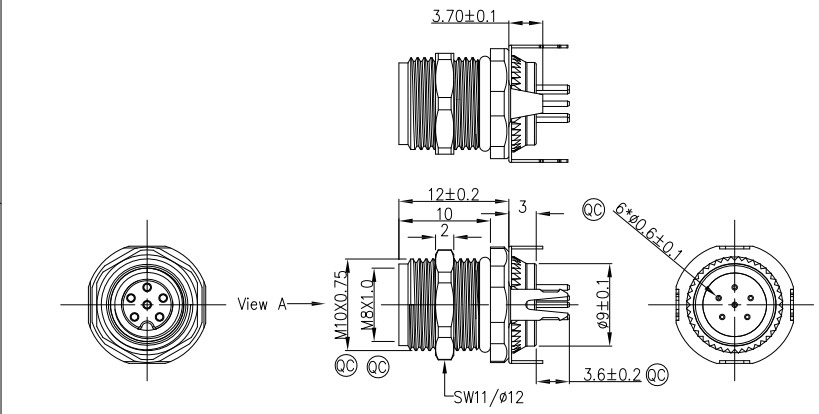
 THIRD ANGLE PROJECTION DESIGN UNITS Metric SCALE 2:1 SIZE A4	GENERAL TOLERANCES (UNLESS SPECIFIED)		APPROVE BY FRANK	DATE 4/DEC/23	PART NO. FM8ST0507-XXS104D00	ITEM NO. FM8ST0507	 Building Technology Cornerstone
	X. $\pm 0.30$	X. $\pm 5^\circ$	CHECKED BY CHERRY	DATE 4/DEC/23			
	X.XX $\pm 0.20$	.X $\pm 2^\circ$	DRAWN BY LAM	DATE 4/DEC/23	TITLE M8X1.0 female socket 180° [THT] front fastened M10X0.75 with shield		REV 0 SHEET NO. 1/3
THIS DRAWING CONTAINS INFORMATION THAT IS PROPRIETARY TO TXGA INDUSTRIAL ELECTRONICS(S.Z)CO.,LTD AND SHOULD NOT BE USED WITHOUT WRITTEN PERMISSION							

1	2	3	4	5	6	7	8		
Circuits	6Circuits	7Circuits	8Circuits	REV	LOCATIONS	DESCRIPTION	DATE	REVISER	APPD
A-Coded				0		New Release	4/DEC		FRANK

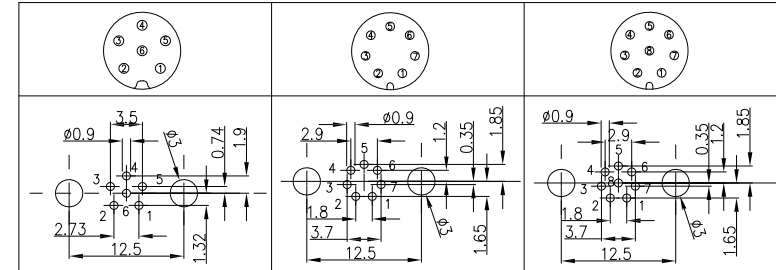


Note:  
 1. Ⓞ Important Dimension  
 2. Waterproof Rate: IP68  
 3. This product must meet IEC61076-2-104  
 4. This product must meet 2011/65/EU ROHS compliance.  
 5. Not note tolerances:  $\pm 0.20$   
 6. Use torque values 1Nm

Recommended Panel Cut-Out



PCB Layout Thickness of PCB:  $\leq 1.6\text{mm}$  【Front view A】



Connector locking system	Screw
Wiring type	Through Hole
Degree of protection	IP68(in mated condition)
Mechanical operation	> 100 mating cycles
Upper temperature	105°C
Lower temperature	-40°C
Pollution degree	3
Overvoltage categorie	II
Material group	II
Material of contact	CuZn (Messing/brass)
Contact plating	Au
Material of contact body	PA
Sealing	EPDM
Material of housing	Brass nickel plated

Ordering Information

FM8S 1 T05 2 07 3 - X 4 XX 5 S 6 1 7 04 8 D 9 00

1 Series Name FM8S-M8 Socket	2 Mounting thread T05-Front fastened M10X0.75	3 Distinction No. 07	4 Coded A-A CODED B-B CODED D-D CODED	5 Circuits 02-2Circuits 03-3Circuits 04-4Circuits 05-5Circuits 06-6Circuits 07-7Circuits 08-8Circuits	6 Contact S-Socket
7 Plating 1-Ep Au	8 Thickness Plating 04-0.1 $\mu\text{m}$	9 Wire type D-Through Hole			

Pin Assignments Front View	Rated Voltage	Rated impulse Voltage	Rated Current (40°C)	Contact resistance	Insulation resistance
	30V DC	800V	1.5A	$\leq 3\text{m}\Omega$	$\geq 100\text{M}\Omega$
	30V DC	800V	1.5A	$\leq 3\text{m}\Omega$	$\geq 100\text{M}\Omega$
	30V DC	800V	1.5A	$\leq 3\text{m}\Omega$	$\geq 100\text{M}\Omega$

 THIRD ANGLE PROJECTION DESIGN UNITS Metric SCALE 2:1 SIZE A4	GENERAL TOLERANCES (UNLESS SPECIFIED)		APPROVE BY FRANK	DATE 4/DEC/23	PART NO. FM8ST0507-XXS104D00	ITEM NO. FM8ST0507	 Building Technology Cornerstone
	X. $\pm 0.30$	X. $\pm 5^\circ$	CHECKED BY CHERRY	DATE 4/DEC/23			
	X.XX $\pm 0.20$	.X $\pm 2^\circ$	DRAWN BY LAM	DATE 4/DEC/23	TITLE M8X1.0 female socket 180° [THT] front fastened M10X0.75 with shield	REV 0	SHEET NO. 2/3
	X.XX $\pm 0.15$	.XX $\pm 1^\circ$	THIS DRAWING CONTAINS INFORMATION THAT IS PROPRIETARY TO TXGA INDUSTRIAL ELECTRONICS(S.Z)CO.,LTD AND SHOULD NOT BE USED WITHOUT WRITTEN PERMISSION				
X.XXX $\pm 0.10$	.XXX $\pm 0.5^\circ$						

