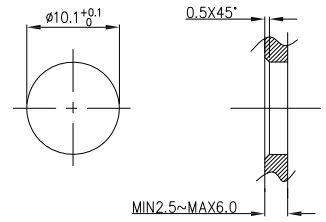
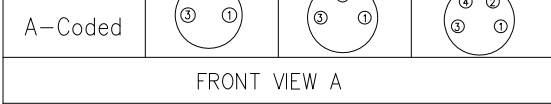
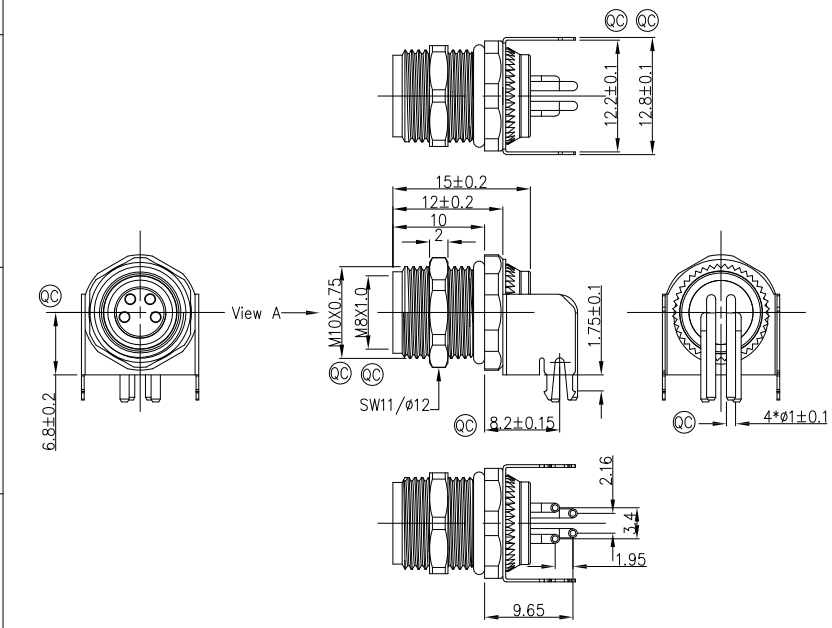


1	2	3	4	5	6	7	8			
Circuits	2Circuits	3Circuits	4Circuits		REV	LOCATIONS	DESCRIPTION	DATE	REVISER	APPD
A-Coded					0		New Release	4/DEC		FRANK

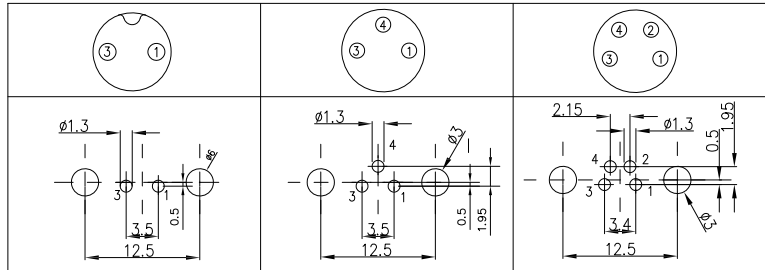


Note:
 1. Ⓞ Important Dimension
 2. Waterproof Rate: IP68
 3. This product must meet IEC61076-2-104
 4. This product must meet 2011/65/EU ROHS compliance.
 5. Not note tolerances: ± 0.20
 6. Use torque values 1Nm

Recommended Panel Cut-Out



PCB Layout Thickness of PCB: $\leq 1.6\text{mm}$ 【Front view A】



Connector locking system	Screw
Wiring type	Through Hole
Degree of protection	IP68(in mated condition)
Mechanical operation	> 100 mating cycles
Upper temperature	105°C
Lower temperature	-40°C
Pollution degree	3
Overtoltage categorie	II
Material group	II
Material of contact	CuZn (Messing/brass)
Contact plating	Au
Material of contact body	PA
Sealing	EPDM
Material of housing	Brass nickel plated

Ordering Information

FM8S T05 08 - X XX S 1 04 D 00
 1 2 3 4 5 6 7 8 9

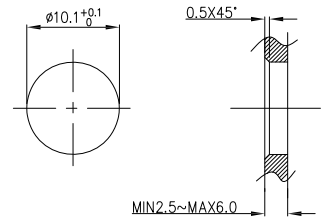
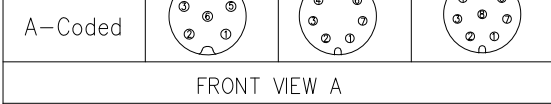
1 Series Name FM8S-M8 Socket	2 Mounting thread T05-Front fastened M10X0.75	3 Distinction No. 08	4 Coded A-A CODED B-B CODED D-D CODED	5 Circuits 02-2Circuits 03-3Circuits 04-4Circuits 05-5Circuits 06-6Circuits 07-7Circuits 08-8Circuits	6 Contact S-Socket
7 Plating 1-Ep Au	8 Thickness Plating 04-0.1 μm	9 Wire type D-Through Hole			

Pin Assignments Front View	Rated Voltage	Rated impulse Voltage	Rated Current (40°C)	Contact resistance	Insulation resistance
	60V DC	1500V	4A	$\leq 3\text{m}\Omega$	$\geq 100\text{M}\Omega$
	60V DC	1500V	4A	$\leq 3\text{m}\Omega$	$\geq 100\text{M}\Omega$
	60V DC	1500V	4A	$\leq 3\text{m}\Omega$	$\geq 100\text{M}\Omega$

 THIRD ANGLE PROJECTION DESIGN UNITS Metric SCALE 2:1 SIZE A4	GENERAL TOLERANCES (UNLESS SPECIFIED)		APPROVE BY FRANK	DATE 4/DEC/23	PART NO. FM8ST0508-XXXS104D00	ITEM NO. FM8ST0508	 Building Technology Cornerstone
	X. ± 0.30	X. $\pm 5^\circ$	CHECKED BY CHERRY	DATE 4/DEC/23			
	X.XX ± 0.20	.X $\pm 2^\circ$	DRAWN BY LAM	DATE 4/DEC/23	TITLE M8X1.0 female socket 180° [THT] front fastened M10X0.75 Right angle with shield	REV 0	SHEET NO. 1/3

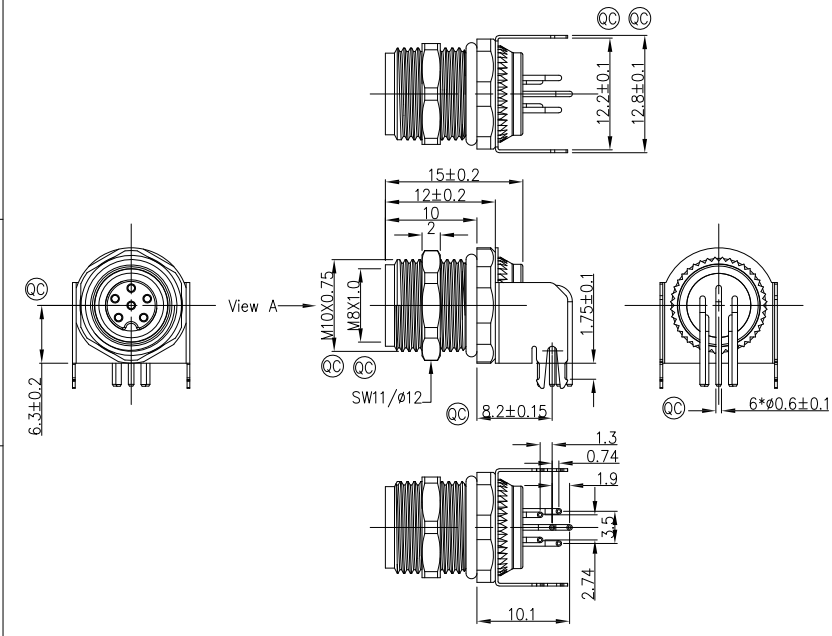
THIS DRAWING CONTAINS INFORMATION THAT IS PROPRIETARY TO TXGA INDUSTRIAL ELECTRONICS(S.Z)CO.,LTD AND SHOULD NOT BE USED WITHOUT WRITTEN PERMISSION

1	2	3	4	5	6	7	8		
Circuits	6Circuits	7Circuits	8Circuits	REV	LOCATIONS	DESCRIPTION	DATE	REVISER	APPD
A-Coded				0		New Release	4/DEC		FRANK

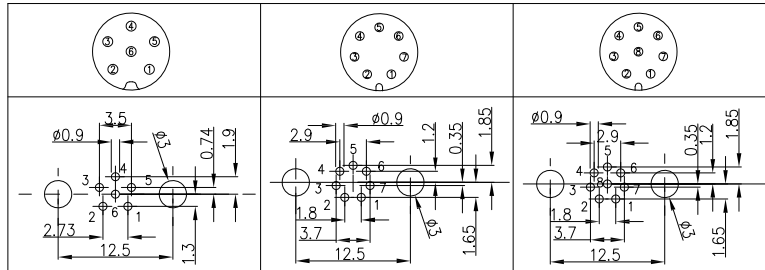


Note:
 1. Ⓞ Important Dimension
 2. Waterproof Rate: IP68
 3. This product must meet IEC61076-2-104
 4. This product must meet 2011/65/EU ROHS compliance.
 5. Not note tolerances: ± 0.20
 6. Use torque values 1Nm

Recommended Panel Cut-Out



PCB Layout Thickness of PCB: $\leq 1.6\text{mm}$ 【Front view A】



Connector locking system	Screw
Wiring type	Through Hole
Degree of protection	IP68(in mated condition)
Mechanical operation	> 100 mating cycles
Upper temperature	105°C
Lower temperature	-40°C
Pollution degree	3
Overvoltage categorie	II
Material group	II
Material of contact	CuZn (Messing/brass)
Contact plating	Au
Material of contact body	PA
Sealing	EPDM
Material of housing	Brass nickel plated

Pin Assignments Front View	Rated Voltage	Rated impulse Voltage	Rated Currnt (40°C)	Contact resistance	Insulation resistance
	30V DC	800V	1.5A	$\leq 3\text{m}\Omega$	$\geq 100\text{M}\Omega$
	30V DC	800V	1.5A	$\leq 3\text{m}\Omega$	$\geq 100\text{M}\Omega$
	30V DC	800V	1.5A	$\leq 3\text{m}\Omega$	$\geq 100\text{M}\Omega$

Ordering Information

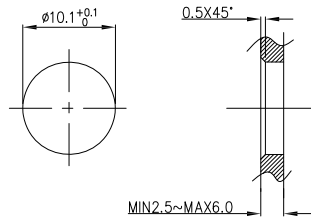
FM8S 1 T05 2 08 3 - X 4 XX 5 S 6 1 7 04 8 D 9 00

1 Series Name FM8S-M8 Socket	2 Mounting thread T05-Front fastened M10X0.75	3 Distinction No. 08	4 Coded A-A CODED B-B CODED D-D CODED	5 Circuits 02-2Circuits 03-3Circuits 04-4Circuits 05-5Circuits 06-6Circuits 07-7Circuits 08-8Circuits	6 Contact S- Socket
7 Plating 1-Ep Au	8 Thickness Plating 04-0.1μm	9 Wire type D-Through Hole			

 THIRD ANGLE PROJECTION DESIGN UNITS Metric SCALE 2:1 SIZE A4	GENERAL TOLERANCES (UNLESS SPECIFIED)		APPROVE BY FRANK	DATE 4/DEC/23	PART NO. FM8ST0508-XXS104D00	ITEM NO. FM8ST0508	 Building Technology Cornerstone	
	X.±0.30	X.±5°	CHECKED BY CHERRY	DATE 4/DEC/23				
	X.X±0.20	.X'±2'	DRAWN BY LAM	DATE 4/DEC/23	TITLE M8X1.0 female socket 180° [THT] front fastened M10X0.75 Right angle with shield		REV 0	SHEET NO. 2/3
	X.XX±0.15	.XX'±1'	THIS DRAWING CONTAINS INFORMATION THAT IS PROPRIETARY TO TXGA INDUSTRIAL ELECTRONICS(S.Z)CO.,LTD AND SHOULD NOT BE USED WITHOUT WRITTEN PERMISSION					
X.XXX±0.10	.XXX'±0.5'							

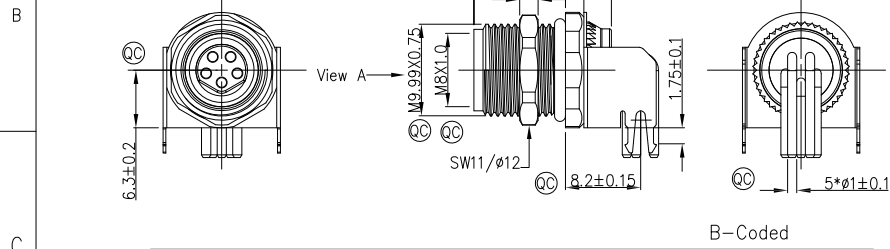
REV	LOCATIONS	DESCRIPTION	DATE	REVISER	APPD
0		New Release	4/DEC		FRANK

Circuits	5Circuits
B-Coded	
Circuits	4Circuits
D-Coded	
FRONT VIEW A	

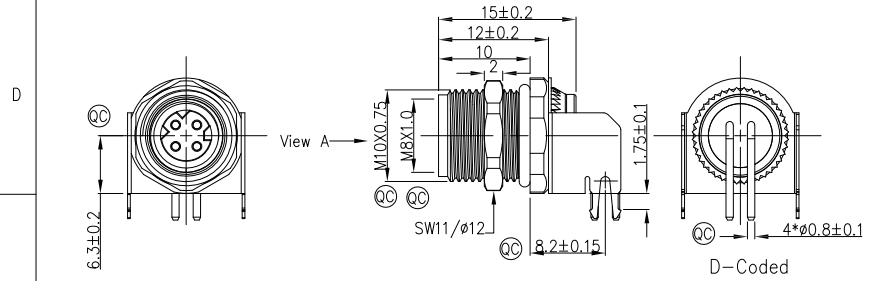


Recommended Panel Cut-Out

- Note:
- ① Important Dimension
 - Waterproof Rate: IP68
 - This product must meet IEC61076-2-104
 - This product must meet 2011/65/EU ROHS compliance.
 - Not note tolerances: ± 0.20
 - Use torque values 1Nm

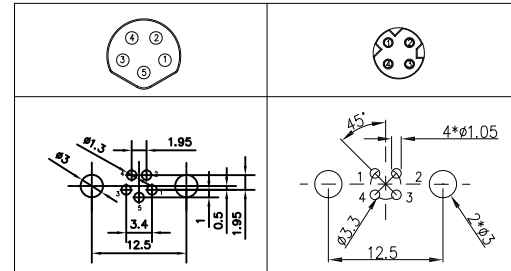


B-Coded



D-Coded

PCB Layout Thickness of PCB: $\leq 1.6\text{mm}$ 【Front view A】



Connector locking system	Screw
Wiring type	Through Hole
Degree of protection	IP68(in mated condition)
Mechanical operation	> 100 mating cycles
Upper temperature	105°C
Lower temperature	-40°C
Pollution degree	3
Overvoltage categorie	II
Material group	II
Material of contact	CuZn (Messing/brass)
Contact plating	Au
Material of contact body	PA
Sealing	EPDM
Material of housing	Brass nickel plated

Ordering Information

FM8S T05 08 - X XX S 1 04 D 00
 1 2 3 4 5 6 7 8 9

1 Series Name FM8S-M8 Socket	2 Mounting thread T05-Front fastened M10X0.75	3 Distinction No. 08	4 Coded A-A CODED B-B CODED D-D CODED	5 Circuits 02-2Circuits 03-3Circuits 04-4Circuits 05-5Circuits 06-6Circuits 07-7Circuits 08-8Circuits	6 Contact S- Socket
---------------------------------	---	-------------------------	--	--	------------------------

7 Plating 1-Ep Au	8 Thickness Plating 04-0.1μm	9 Wire type D-Through Hole
----------------------	---------------------------------	-------------------------------

Pin Assignments Front View	Rated Voltage	Rated impulse Voltage	Rated Currnt (40°C)	Contact resistance	Insulation resistance
	60V DC	1500V	4A	$\leq 3\text{m}\Omega$	$\geq 100\text{M}\Omega$
	63V DC	1500V	4A	$\leq 3\text{m}\Omega$	$\geq 100\text{M}\Omega$

 THIRD ANGLE PROJECTION DESIGN UNITS Metric SCALE 2:1 SIZE A4	GENERAL TOLERANCES (UNLESS SPECIFIED)		APPROVE BY FRANK	DATE 4/DEC/23	PART NO. FM8ST0508-XXS104D00	ITEM NO. FM8ST0508	 Building Technology Cornerstone REV 0 SHEET NO. 3/3
	X.±0.30	X.±5°	CHECKED BY CHERRY	DATE 4/DEC/23	TITLE M8X1.0 female socket 180° [THT] front fastened M10X0.75 Right angle with shield		
	X.XX±0.20	.X'±2'	DRAWN BY LAM	DATE 4/DEC/23	THIS DRAWING CONTAINS INFORMATION THAT IS PROPRIETARY TO TXGA INDUSTRIAL ELECTRONICS(S.Z)CO.,LTD AND SHOULD NOT BE USED WITHOUT WRITTEN PERMISSION		
	X.XX±0.15	.XX'±1'					
X.XXX±0.10	.XXX'±0.5'						