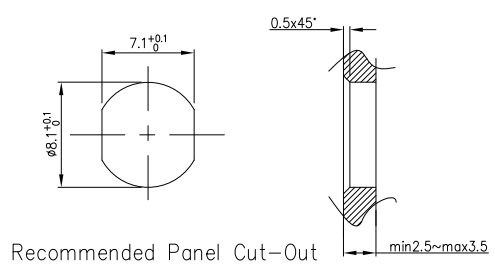
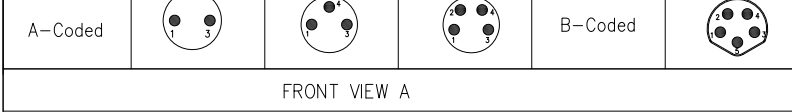
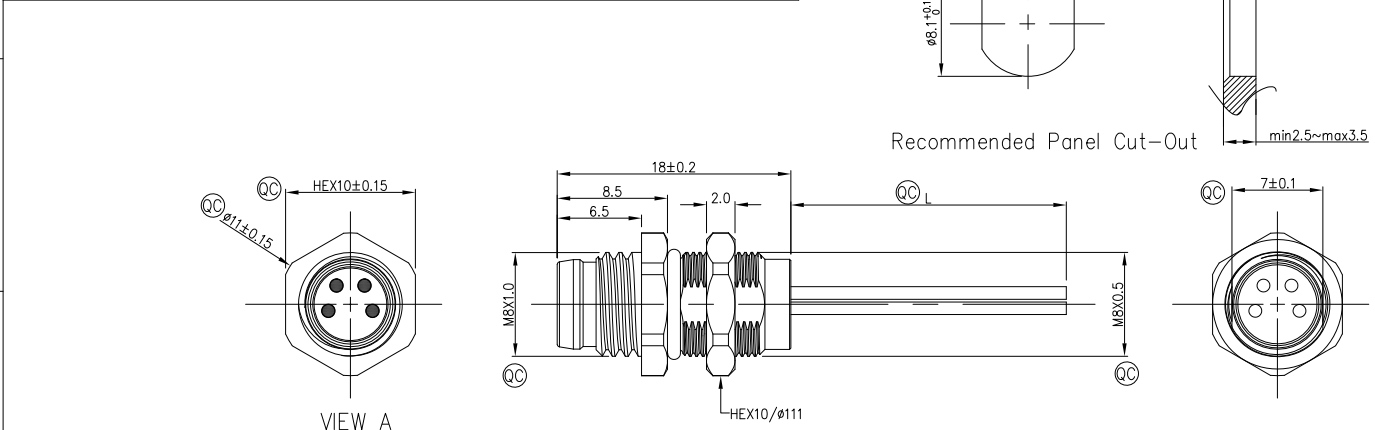


1	2	3	4	5	6	7	8				
circuits	2circuits	3circuits	4circuits	circuits	5circuits	REV	LOCATIONS	DESCRIPTION	DATE	REVISER	APPD
A-Coded				B-Coded		0		New Release	11/DEC	LAM	FRANK



Note:
 1. Ⓞ Important Dimension
 2. Degree of protection: IP68
 3. This product must meet IEC61076-2-104
 4. This product must meet 2011/65/EU ROHS compliance.
 5. Not note tolerances: ±0.20
 6. Use torque values 1.0Nm



Ordering Information

FM8W	R03	20	-	X	XX	P	1	04	XXXX	00
1	2	3	4	5	6	7	8	9		
Series Name	Mounting thread	Distinction No.	Coded	Circuits						
FM8W-M8 Wire	R03-Rear fastened M8X0.5	20	A-A CODED B-B CODED	02-2Circuits 03-3Circuits 04-4Circuits 05-5Circuits 06-6Circuits 07-7Circuits 08-8Circuits						
Contact	Plating	Thickness Plating	Length							
P-Pin	1-Ep Au	04-0.1μm	XXXX-(see table1)							

TABLE 1

CABLE LENGTH (XXX)	0050	0100	0150	0200	0990
	50mm	100mm	150mm	200mm	990mm
	1000	1500	2000	3000	9999
	1M	1.5M	2M	3M	9.999M

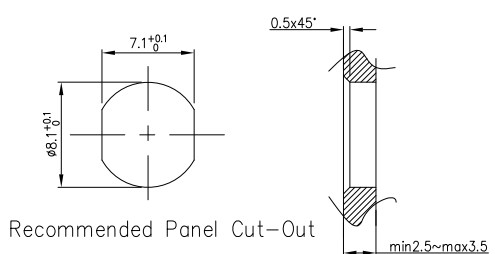
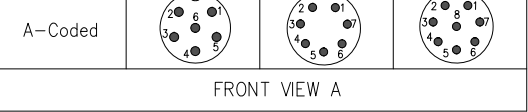
Dimensions L (mm)				
Range(length)	50 to 200	201 to 1000	1001 to 5000	5000 to 9999
Tolerance(mm)	±10	±15	±25	±30

3	4	4	5				
blue	black	black	grey				
3	3	4	4				
blue	blue	blue	black				
3	3	3	3				
blue	blue	white	blue				
3	3	2	2				
white	white	white	white				
3	3	1	1				
brown	brown	brown	brown				
1	1	1	1				
brown	brown	brown	brown				
Circuits	Color	Circuits	Color	Circuits	Color	Circuits	Color
Circuits	Rated Voltage	Rated impulse Voltage	Rated Currnt (40°C)	Contact resistance	Insulation resistance	Wire Size(mm²)/AWG	Overvoltage categorie
2Circuits	60V DC	1500V	4A	≤5mΩ	≥100MΩ	0.35mm²/22AWG	II
3Circuits	60V DC	1500V	4A	≤5mΩ	≥100MΩ	0.35mm²/22AWG	II
4Circuits	60V DC	1500V	4A	≤5mΩ	≥100MΩ	0.35mm²/22AWG	II
5Circuits	60V DC	1500V	4A	≤5mΩ	≥100MΩ	0.35mm²/22AWG	II

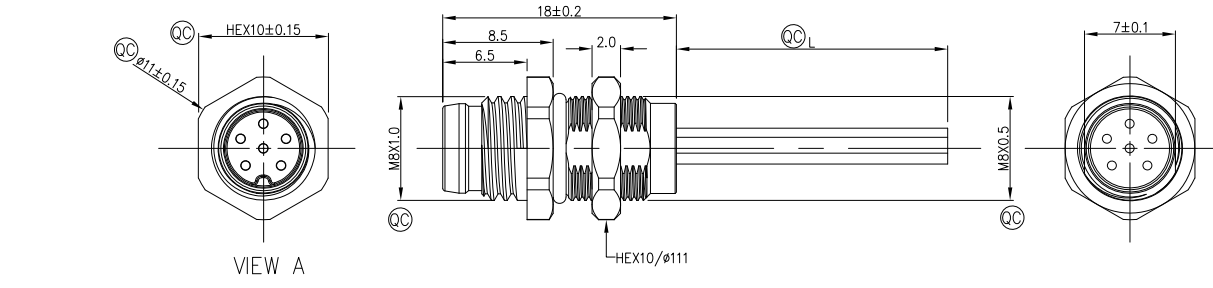
Connector locking system	M8X1.0 Screw
Wiring type	Crimp
Degree of protection	IP68(in mated condition)
Mechanical operation	> 100 mating cycles
Upper temperature	105°C
Lower temperature	-40°C
Pollution degree	3
Overvoltage categorie	II
Material group	II
Material of contact	Copper alloy
Contact plating	Au
Material of contact body	PA
Sealing	EPDM
Material of housing	Copper nickel plated

 THIRD ANGLE PROJECTION DESIGN UNITS Metric SCALE 2:1 SIZE A4	GENERAL TOLERANCES (UNLESS SPECIFIED) X.±0.30 X.±5° X.XX±0.20 .X'±2° X.XX±0.15 .XX'±1° X.XXX±0.10 .XXX'±0.5°	APPROVE BY FRANK CHECKED BY CHERRY DRAWN BY LAM	DATE 13/Dec/23 DATE 13/Dec/23 DATE 13/Dec/23	PART NO. FM8WR0320-XXXXP104XXXX00 TITLE Rear fastened M8x0.5 Male Socket 【double section】with lize,free end	ITEM NO. FM8WR0320 Building Technology Cornerstone REV 0 SHEET NO. 1/2
	THIS DRAWING CONTAINS INFORMATION THAT IS PROPRIETARY TO TXGA INDUSTRIAL ELECTRONICS(S,Z)CO.,LTD AND SHOULD NOT BE USED WITHOUT WRITTEN PERMISSION				

1	2	3	4	5	6	7	8			
circuits	6circuits	7circuits	8circuits		REV	LOCATIONS	DESCRIPTION	DATE	REVISER	APPD
A-Coded					0		New Release	11/DEC	LAM	FRANK



Note:
 1. Ⓞ Important Dimension
 2. Degree of protection: IP68
 3. This product must meet IEC61076-2-104
 4. This product must meet 2011/65/EU ROHS compliance.
 5. Not note tolerances: ±0.20
 6. Use torque values 1.0Nm



Ordering Information

FM8W	R03	20	-	X	XX	P	1	04	XXXX	00
1	2	3	4	5	6	7	8	9		
Series Name	Mounting thread	Distinction No.	Coded	Circuits						
FM8W-M8 Wire	R03-Rear fastened M8X0.5	20	A-A CODED B-B CODED	02-2Circuits 03-3Circuits 04-4Circuits 05-5Circuits 06-6Circuits 07-7Circuits 08-8Circuits						
Contact	Plating	Thickness Plating	Length							
P-Pin	1-Ep Au	04-0.1µm	XXXX-(see table1)							

TABLE 1

CABLE LENGTH (XXX)	0050	0100	0150	0200	0990
	50mm	100mm	150mm	200mm	990mm
	1M	1.5M	2M	3M	9.999M

Dimensions L (mm)				
Range(length)	50 to 200	201 to 1000	1001 to 5000	5000 to 9999
Tolerance(mm)	±10	±15	±25	±30

6 Circuits		7 Circuits		8 Circuits		Connector locking system	M8X1.0 Screw
6	purple	6	pink	6	pink	Wiring type	Crimp
5	grey	5	grey	5	grey	Degree of protection	IP68(in mated condition)
4	black	4	yellow	4	yellow	Mechanical operation	> 100 mating cycles
3	blue	3	green	3	green	Upper temperature	105°C
2	white	2	brown	2	brown	Lower temperature	-40°C
1	brown	1	white	1	white	Pollution degree	3
Circuits	Color	Circuits	Color	Circuits	Color	Overvoltage categorie	II
6Circuits	30V DC	800V	1.5A	≤5mΩ	≥100MΩ	Material group	II
7Circuits	30V DC	800V	1.5A	≤5mΩ	≥100MΩ	Material of contact	Copper alloy
8Circuits	30V DC	800V	1.5A	≤5mΩ	≥100MΩ	Contact plating	Au
						Material of contact body	PA
						Sealing	EPDM
						Material of housing	Copper nickel plated

 THIRD ANGLE PROJECTION DESIGN UNITS Metric SCALE 2:1 SIZE A4	GENERAL TOLERANCES (UNLESS SPECIFIED)		APPROVE BY	DATE	PART NO.	ITEM NO.	 Building Technology Cornerstone REV 0 SHEET NO. 2/2
	X.±0.30	X.±5'	FRANK	13/Dec/23	FM8WR0320-XXXX104XXXX00	FM8WR0320	
	X.X±0.20	.X'±2'	CHECKED BY	DATE	TITLE		
	X.XX±0.15	.XX'±1'	CERRY	13/Dec/23	Rear fastened M8x0.5 Male Socket 【double section】with lize,free end		
X.XXX±0.10	.XXX'±0.5'	DRAWN BY	DATE	THIS DRAWING CONTAINS INFORMATION THAT IS PROPRIETARY TO TXGA INDUSTRIAL ELECTRONICS(S,Z)CO.,LTD AND SHOULD NOT BE USED WITHOUT WRITTEN PERMISSION			
		LAM	13/Dec/23				