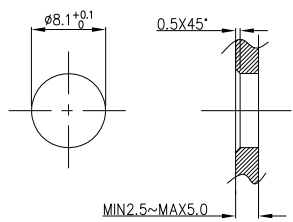
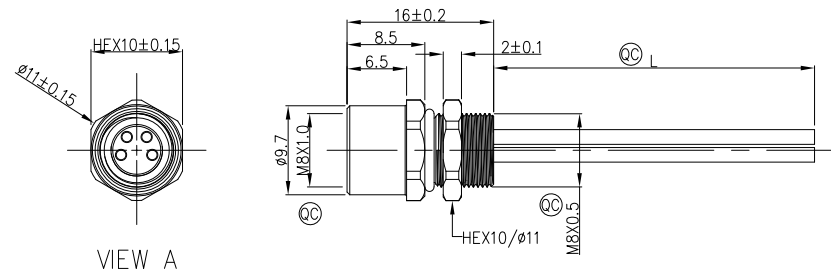


1	2	3	4	5	6	7	8				
Circuits	2Circuits	3Circuits	4Circuits	Circuits	5Circuits	REV	LOCATIONS	DESCRIPTION	DATE	REVISER	APPD
A-Coded				B-Coded		0		New Release	4/DEC	LAM	FRANK



Note:  
 1. Ⓞ Important Dimension  
 2. Waterproof Rate: IP68  
 3. This product must meet IEC61076-2-104  
 4. This product must meet 2011/65/EU ROHS compliance.  
 5. Not note tolerances: ±0.20  
 6. Use torque values 1Nm

Recommended Panel Cut-Out



Ordering Information

FM8W R03 21 - X XX S 1 04 XXXX 00  
 1 2 3 4 5 6 7 8 9

1 Series Name FM8W-M8 Wire	2 Mounting thread R03-rear fastened M8X0.5	3 Distinction No. 21	4 Coded A-A CODED B-B CODED	5 Circuits 02-2Circuits 03-3Circuits 04-4Circuits 05-5Circuits 06-6Circuits 07-7Circuits 08-8Circuits
6 Contact S- Socket	7 Plating 1-Ep Au	8 Thickness Plating 04-0.1μm	9 Length XXXX-(see table1)	

TABLE 1

CABLE LENGTH (XXX)	0050	0100	0150	0200	.....	0990
	50mm	100mm	150mm	200mm	.....	990mm
	1000	1500	2000	3000	.....	9999
	1M	1.5M	2M	3M	.....	9.999M

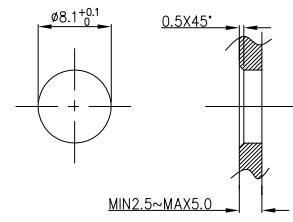
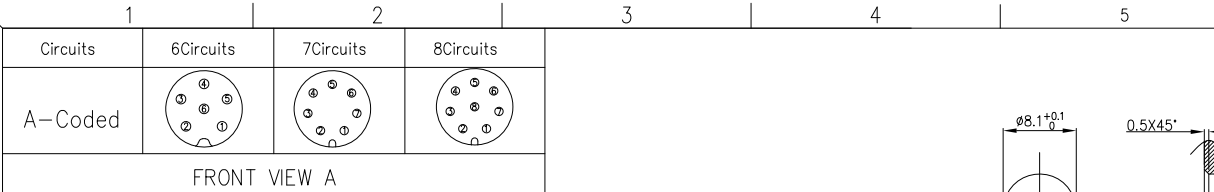
Dimensions L (mm)				
Range(length)	50 to 200	201 to 1000	1001 to 5000	5000 to 9999
Tolerance(mm)	±10	±15	±25	±30

3	4	4	5				
blue	black	black	grey				
3	3	4	4				
blue	blue	black	black				
1	1	2	2				
brown	brown	white	white				
1	1	1	1				
brown	brown	brown	brown				
Circuits	Color	Circuits	Color	Circuits	Color	Circuits	Color
Rated Voltage	Rated impulse Voltage	Rated Currnt (40°C)	Contact resistance	Insulation resistance	Wire Size(mm²)/AWG	Overvoltage categorie	II
2Circuits	60V DC	1500V	4A	≤5mΩ	≥100MΩ	Material group	II
3Circuits	60V DC	1500V	4A	≤5mΩ	≥100MΩ	Material of contact	CuZn (Messing/brass)
4Circuits	60V DC	1500V	4A	≤5mΩ	≥100MΩ	Contact plating	Au
5Circuits	60V DC	1500V	4A	≤5mΩ	≥100MΩ	Material of contact body	PA
						Sealing	EPDM
						Material of housing	Brass nickel plated

Connector locking system	Screw
Wiring type	Crimp
Degree of protection	IP68(in mated condition)
Mechanical operation	> 100 mating cycles
Upper temperature	105°C
Lower temperature	-40°C
Pollution degree	3
Overvoltage categorie	II
Material group	II
Material of contact	CuZn (Messing/brass)
Contact plating	Au
Material of contact body	PA
Sealing	EPDM
Material of housing	Brass nickel plated

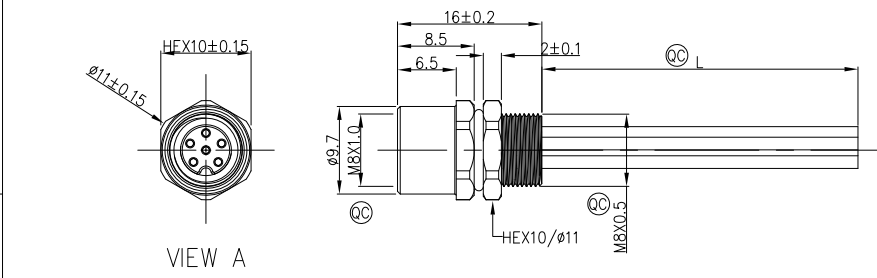
THIRD ANGLE PROJECTION	GENERAL TOLERANCES (UNLESS SPECIFIED)		APPROVE BY	DATE	PART NO.	ITEM NO.	
	X.±0.30	.X'±5'	FRANK	4/DEC/23	FM8WR0321-XXXX104XXXX00	FM8SR0321	
	DESIGN UNITS Metric	X.X±0.20	.X'±2'	CHECKED BY	DATE	TITLE	 Building Technology Cornerstone
	SCALE 2:1	X.XX±0.15	.XX'±1'	CERRY	4/DEC/23	M8X1.0 female socket rear fastened M8X0.5 Crimp terminal [Circle] to lite open end	
SIZE A4	X.XXX±0.10	.XXX'±0.5'	DRAWN BY	DATE	THIS DRAWING CONTAINS INFORMATION THAT IS PROPRIETARY TO TXGA INDUSTRIAL ELECTRONICS(S,Z)CO.,LTD AND SHOULD NOT BE USED WITHOUT WRITTEN PERMISSION		
			LAM	4/DEC/23	REV 0	SHEET NO. 1/2	

REV	LOCATIONS	DESCRIPTION	DATE	REVISER	APPD
0		New Release	4/DEC	LAM	FRANK



Note:  
 1. Ⓞ Important Dimension  
 2. Waterproof Rate: IP68  
 3. This product must meet IEC61076-2-104  
 4. This product must meet 2011/65/EU ROHS compliance.  
 5. Not note tolerances:  $\pm 0.20$   
 6. Use torque values 1Nm

Recommended Panel Cut-Out



Ordering Information

FM8W 1 R03 2 21 3 - X 4 XX 5 S 6 1 7 04 8 XXXX 9 00

1 Series Name - 2 Mounting thread - 3 Distinction No. - 4 Coded - 5 Circuits  
 FM8W-M8 Wire - R03-rear fastened M8X0.5 - 21 - A-A CODED B-B CODED - 02-2Circuits 03-3Circuits 04-4Circuits 05-5Circuits 06-6Circuits 07-7Circuits 08-8Circuits

6 Contact - 7 Plating - 8 Thickness Plating - 9 Length  
 S- Socket - 1-Ep Au - 04-0.1 $\mu$ m - XXXX-(see table1)

TABLE 1

CABLE LENGTH (XXX)	0050	0100	0150	0200	.....	0990
	50mm	100mm	150mm	200mm	.....	990mm
	1M	1.5M	2M	3M	.....	9.999M

Dimensions L (mm)				
Range(length)	50 to 200	201 to 1000	1001 to 5000	5000 to 9999
Tolerance(mm)	$\pm 10$	$\pm 15$	$\pm 25$	$\pm 30$

6	purple	6	pink	6	pink	8	red	Connector locking system	Screw
5	grey	5	grey	5	grey	7	blue	Wiring type	Crimp
4	black	4	yellow	4	yellow	7	blue	Degree of protection	IP68(in mated condition)
3	blue	3	green	3	green	6	pink	Mechanical operation	> 100 mating cycles
2	white	2	brown	2	brown	5	grey	Upper temperature	105°C
1	brown	1	white	1	white	4	yellow	Lower temperature	-40°C
						3	green	Pollution degree	3
						2	brown	Overvoltage categorie	II
						1	white	Material group	II
Circuits	Color	Circuits	Color	Circuits	Color			Material of contact	CuZn (Messing/brass)
6Circuits	30V DC	800V	1.5A	$\leq 5m\Omega$	$\geq 100M\Omega$	0.25mm <sup>2</sup> /24AWG		Contact plating	Au
7Circuits	30V DC	800V	1.5A	$\leq 5m\Omega$	$\geq 100M\Omega$	0.14mm <sup>2</sup> /26AWG		Material of contact body	PA
8Circuits	30V DC	800V	1.5A	$\leq 5m\Omega$	$\geq 100M\Omega$	0.14mm <sup>2</sup> /26AWG		Sealing	EPDM
								Material of housing	Brass nickel plated

 THIRD ANGLE PROJECTION DESIGN UNITS Metric SCALE 2:1 SIZE A4	GENERAL TOLERANCES (UNLESS SPECIFIED)		APPROVE BY FRANK	DATE 4/DEC/23	PART NO. FM8WR0321-XXXXS104XXXX00	ITEM NO. FM8SR0321	 Building Technology Cornerstone REV 0 SHEET NO. 2/2
	X $\pm 0.30$	X $\pm 5'$	CHECKED BY CHERRY	DATE 4/DEC/23	TITLE M8X1.0 female socket rear fastened M8X0.5 Crimp terminal [Circle] to lite open end		
	X.X $\pm 0.20$	.X $\pm 2'$	DRAWN BY LAM	DATE 4/DEC/23	THIS DRAWING CONTAINS INFORMATION THAT IS PROPRIETARY TO TXGA INDUSTRIAL ELECTRONICS(S.Z)CO.,LTD AND SHOULD NOT BE USED WITHOUT WRITTEN PERMISSION		
	X.XX $\pm 0.15$	.XX $\pm 1'$					