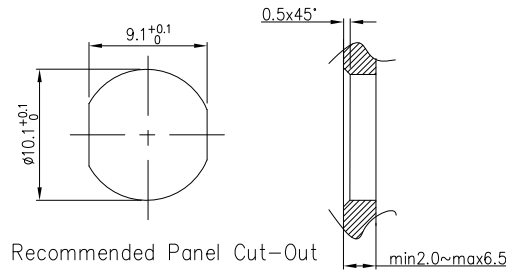
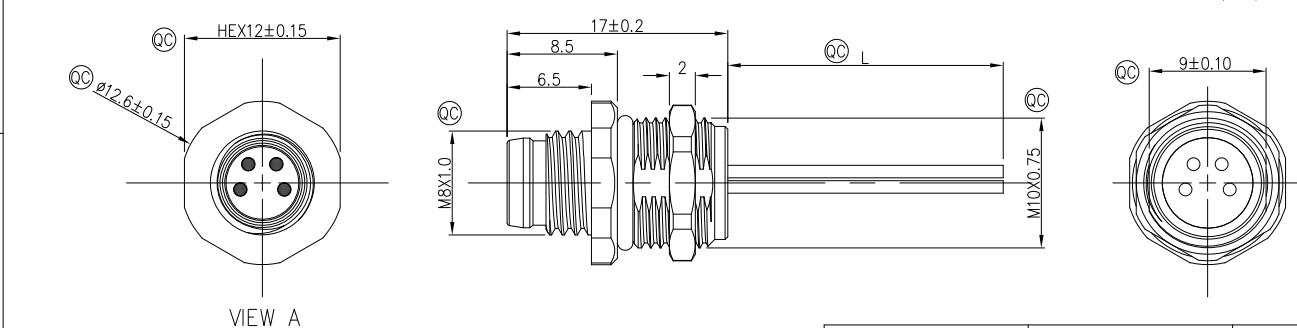


1	2	3	4	5	6	7	8			
circuits	2circuits	3circuits	4circuits	circuits	REV	LOCATIONS	DESCRIPTION	DATE	REVISER	APPD
A-Coded				B-Coded	0		New Release	11/DEC	LAM	FRANK

FRONT VIEW A



Note:
 1. Ⓞ Important Dimension
 2. Degree of protection: IP68
 3. This product must meet IEC61076-2-104
 4. This product must meet 2011/65/EU ROHS compliance.
 5. Not note tolerances: ±0.20
 6. Use torque values 1.0Nm



VIEW A

Ordering Information

FM8W R05 20 - X XX P 1 04 XXXX 00
 1 2 3 4 5 6 7 8 9

- 1 Series Name: FM8W-M8 Wire
- 2 Mounting thread: R05-Rear fastened M10X0.75
- 3 Distinction No.: 20
- 4 Coded: A-A CODED, B-B CODED
- 5 Circuits: 02-2Circuits, 03-3Circuits, 04-4Circuits, 05-5Circuits, 06-6Circuits, 07-7Circuits, 08-8Circuits
- 6 Contact: P-Pin
- 7 Plating: 1-Ep Au
- 8 Thickness Plating: 04-0.1µm
- 9 Length: XXXX-(see table1)

TABLE 1

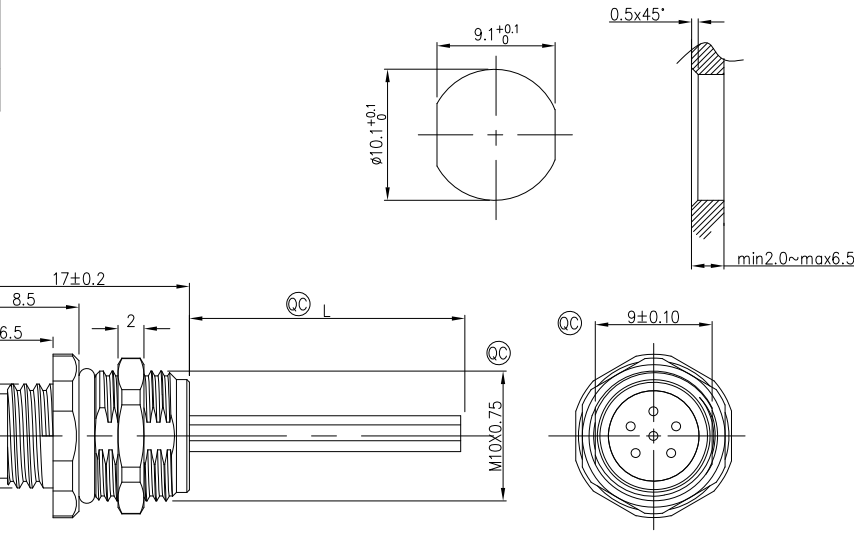
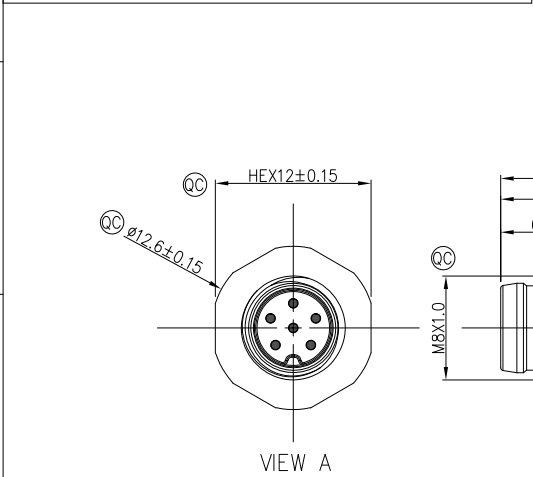
CABLE LENGTH (XXX)	0050	0100	0150	0200	0990
	50mm	100mm	150mm	200mm	990mm
	1000	1500	2000	3000	9999
	1M	1.5M	2M	3M	9.999M

Dimensions L (mm)				
Range(length)	50 to 200	201 to 1000	1001 to 5000	5000 to 9999
Tolerance(mm)	±10	±15	±25	±30

						Connector locking system	M8X1.0 Screw
3	3	4	4	5	5	Wiring type	Crimp
blue	blue	black	black	grey	grey	Degree of protection	IP68(in mated condition)
1	1	1	1	1	1	Mechanical operation	> 100 mating cycles
brown	brown	brown	brown	brown	brown	Upper temperature	105°C
Circuits	Circuits	Circuits	Circuits	Circuits	Circuits	Lower temperature	-40°C
Rated Voltage	Rated Voltage	Rated Voltage	Rated Voltage	Rated Voltage	Rated Voltage	Pollution degree	3
60V DC	60V DC	60V DC	60V DC	60V DC	60V DC	Overvoltage categorie	II
1500V	1500V	1500V	1500V	1500V	1500V	Material group	II
4A	4A	4A	4A	4A	4A	Material of contact	Copper alloy
≤5mΩ	≤5mΩ	≤5mΩ	≤5mΩ	≤5mΩ	≤5mΩ	Contact plating	Au
≥100MΩ	≥100MΩ	≥100MΩ	≥100MΩ	≥100MΩ	≥100MΩ	Material of contact body	PA
0.35mm²/22AWG	0.35mm²/22AWG	0.35mm²/22AWG	0.35mm²/22AWG	0.35mm²/22AWG	0.35mm²/22AWG	Sealing	EPDM
						Material of housing	Copper nickel plated

 THIRD ANGLE PROJECTION DESIGN UNITS Metric SCALE 2:1 SIZE A4	GENERAL TOLERANCES (UNLESS SPECIFIED)		APPROVE BY	DATE	PART NO.	ITEM NO.	 Building Technology Cornerstone REV 0 SHEET NO. 1/2
	X.±0.30	.X.±5'	FRANK	13/Dec/23	FM8WR0520-XXXX104XXXX00	FM8WR0520	
	X.XX±0.20	.XX±2'	CHECKED BY	DATE	TITLE		
	X.XX±0.15	.XX±1'	CHERRY	13/Dec/23	Rear fastened M10x0.75 Male Socket 【double section】with lize,free end		
X.XXX±0.10	.XXX±0.5'	DRAWN BY	DATE	THIS DRAWING CONTAINS INFORMATION THAT IS PROPRIETARY TO TXGA INDUSTRIAL ELECTRONICS(S,Z)CO.,LTD AND SHOULD NOT BE USED WITHOUT WRITTEN PERMISSION			
		LAM	13/Dec/23				

1	2	3	4	5	6	7	8			
circuits	6circuits	7circuits	8circuits		REV	LOCATIONS	DESCRIPTION	DATE	REVISER	APPD
A-Coded					0		New Release	11/DEC	LAM	FRANK



Note:

- ◎◎Important Dimension
- Degree of protection:IP68
- This product must meet IEC61076-2-104
- This product must meet 2011/65/EU ROHS compliance.
- Not note tolerances:±0.20
- Use torque values 1.0Nm

Ordering Information

FM8W	R05	20	-	X	XX	P	1	04	XXXX	00
1	2	3	4	5	6	7	8	9		

1 Series Name FM8W-M8 Wire
 2 Mounting thread R05-Rear fastened M8X0.75
 3 Distinction No. 20
 4 Coded A-A CODED B-B CODED
 5 Circuits 02-2Circuits 03-3Circuits 04-4Circuits 05-5Circuits 06-6Circuits 07-7Circuits 08-8Circuits

6 Contact P-Pin	7 Plating 1-Ep Au	8 Thickness Plating 04-0.1µm	9 Length XXXX-(see table1)
-----------------	-------------------	------------------------------	----------------------------

TABLE 1

CABLE LENGTH (XXX)	0050	0100	0150	0200	0990
	50mm	100mm	150mm	200mm	990mm
	1000	1500	2000	3000	9999
	1M	1.5M	2M	3M	9.999M

Dimensions L (mm)				
Range(length)	50 to 200	201 to 1000	1001 to 5000	5000 to 9999
Tolerance(mm)	±10	±15	±25	±30

			Connector locking system	M8X1.0 Screw
			Wiring type	Crimp
			Degree of protection	IP68(in mated condition)
			Mechanical operation	> 100 mating cycles
			Upper temperature	105°C
			Lower temperature	-40°C
			Pollution degree	3
			Overvoltage categorie	II
			Material group	II
			Material of contact	Copper alloy
			Contact plating	Au
			Material of contact body	PA
			Sealing	EPDM
			Material of housing	Copper nickel plated

 THIRD ANGLE PROJECTION DESIGN UNITS Metric SCALE 2:1 SIZE A4	GENERAL TOLERANCES (UNLESS SPECIFIED)		APPROVE BY	DATE	PART NO.	ITEM NO.
	X.±0.30	X.±5'	FRANK	13/Dec/23	FM8WR0520-XXXXP104XXXX00	FM8WR0520
	X.X±0.20	.X±2'	CHECKED BY	DATE	TITLE	
	X.XX±0.15	.XX±1'	CERRY	13/Dec/23	Rear fastened M10x0.75 Male Socket 【double section】with lize,free end	
X.XXX±0.10	.XXX±0.5'	DRAWN BY	DATE	THIS DRAWING CONTAINS INFORMATION THAT IS PROPRIETARY TO TXGA INDUSTRIAL ELECTRONICS(S,Z)CO.,LTD AND SHOULD NOT BE USED WITHOUT WRITTEN PERMISSION		REV 0 SHEET NO. 2/2
		LAM	13/Dec/23			

