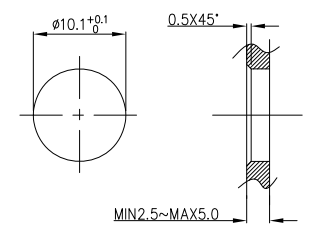
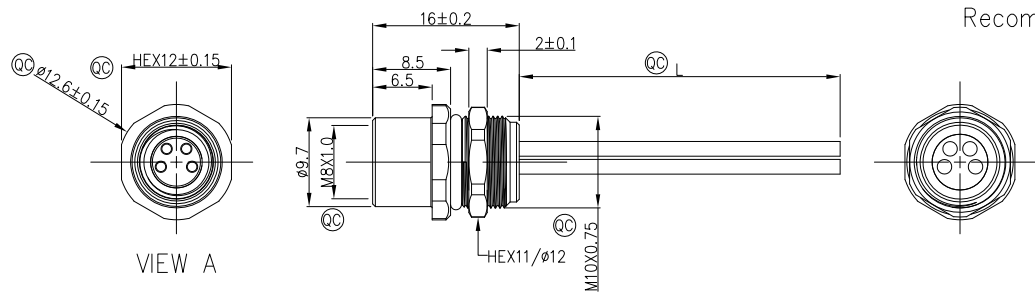


1	2	3	4	5	6	7	8				
Circuits	2Circuits	3Circuits	4Circuits	Circuits	5Circuits	REV	LOCATIONS	DESCRIPTION	DATE	REVISER	APPD
A-Coded				B-Coded		0		New Release	4/DEC	LAM	FRANK



Note:
 1. Ⓞ Important Dimension
 2. Waterproof Rate: IP68
 3. This product must meet IEC61076-2-104
 4. This product must meet 2011/65/EU ROHS compliance.
 5. Not note tolerances: ± 0.20
 6. Use torque values 1Nm

Recommended Panel Cut-Out



Ordering Information

FM8W R05 21 - X XX S 1 04 XXXX 00
 1 2 3 4 5 6 7 8 9

1 Series Name FM8W-M8 Wire	2 Mounting thread R05-rear fastened M10X0.75	3 Distinction No. 21	4 Coded A-A CODED B-B CODED	5 Circuits 02-2Circuits 03-3Circuits 04-4Circuits 05-5Circuits 06-6Circuits 07-7Circuits 08-8Circuits
6 Contact S- Socket	7 Plating 1-Ep Au	8 Thickness Plating 04-0.1μm	9 Length XXXX-(see table1)	

TABLE 1

CABLE LENGTH (XXX)	0050	0100	0150	0200	0990
	50mm	100mm	150mm	200mm	990mm
	1000	1500	2000	3000	9999
	1M	1.5M	2M	3M	9.999M

Dimensions L (mm)				
Range(length)	50 to 200	201 to 1000	1001 to 5000	5000 to 9999
Tolerance(mm)	±10	±15	±25	±30

3	4	3	4
blue	black	blue	black
1	1	2	2
brown	brown	white	white
Circuits	Color	Circuits	Color
2Circuits	60V DC	1500V	4A
3Circuits	60V DC	1500V	4A
4Circuits	60V DC	1500V	4A
5Circuits	60V DC	1500V	4A

Connector locking system	Screw
Wiring type	Crimp
Degree of protection	IP68(in mated condition)
Mechanical operation	> 100 mating cycles
Upper temperature	105°C
Lower temperature	-40°C
Pollution degree	3
Overvoltage categorie	II
Material group	II
Material of contact	CuZn (Messing/brass)
Contact plating	Au
Material of contact body	PA
Sealing	EPDM
Material of housing	Brass nickel plated

 THIRD ANGLE PROJECTION DESIGN UNITS Metric SCALE 2:1 SIZE A4	GENERAL TOLERANCES (UNLESS SPECIFIED)		APPROVE BY	DATE	PART NO.	ITEM NO.	 Building Technology Cornerstone REV 0 SHEET NO. 1/2
	X.±0.30	.X'±5'	FRANK	4/DEC/23	FM8WR0521-XXXX104XXXX00	FM8SR0521	
	X.X±0.20	.X'±2'	CHECKED BY	DATE	TITLE		
	X.XX±0.15	.XX'±1'	CERRY	4/DEC/23	M8X1.0 female socket rear fastened M10X0.75 Crimp terminal [Circle]		
X.XXX±0.10	.XXX'±0.5'	DRAWN BY	DATE	THIS DRAWING CONTAINS INFORMATION THAT IS PROPRIETARY TO TXGA INDUSTRIAL ELECTRONICS(S,Z)CO.,LTD AND SHOULD NOT BE USED WITHOUT WRITTEN PERMISSION			
		LAM	4/DEC/23				

