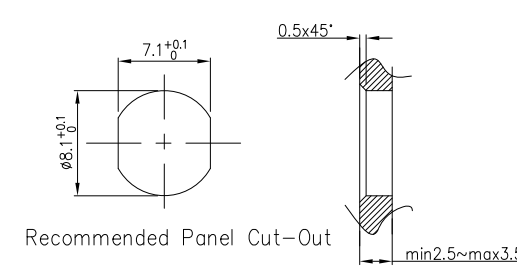
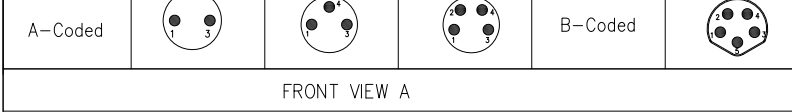
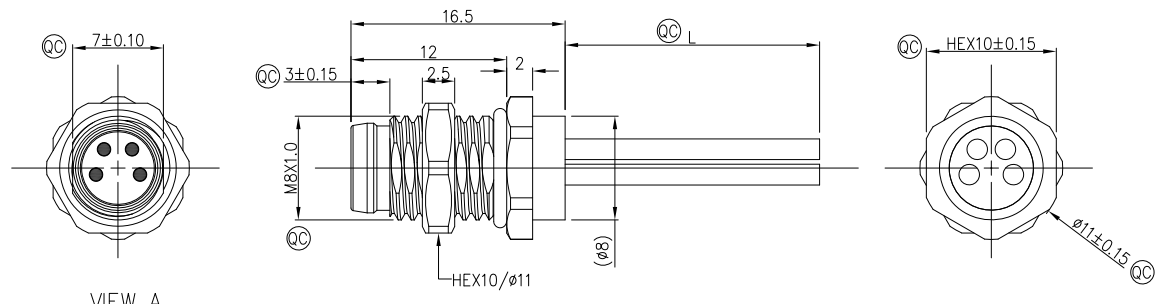


1	2	3	4	5	6	7	8				
circuits	2circuits	3circuits	4circuits	circuits	5circuits	REV	LOCATIONS	DESCRIPTION	DATE	REVISER	APPD
A-Coded				B-Coded		0		New Release	11/DEC	LAM	FRANK



Note:  
 1. Ⓞ Important Dimension  
 2. Degree of protection: IP68  
 3. This product must meet IEC61076-2-104  
 4. This product must meet 2011/65/EU ROHS compliance.  
 5. Not note tolerances: ±0.20  
 6. Use torque values 1.0Nm



### Ordering Information

FM8W	T04	20	-	X	XX	P	1	04	XXXX	00
1	2	3	4	5	6	7	8	9		
1 Series Name	2 Mounting thread	3 Distinction No.	4 Coded	5 Circuits						
FM8W-M8 Wire	T04-Front fastened M8X1.0	20	A-A CODED B-B CODED	02-2Circuits 03-3Circuits 04-4Circuits 05-5Circuits 06-6Circuits 07-7Circuits 08-8Circuits						
6 Contact P-Pin	7 Plating 1-Ep Au	8 Thickness Plating 04-0.1μm	9 Length XXXX-(see table1)							

TABLE 1

CABLE LENGTH (XXX)	0050	0100	0150	0200	.....	0990
	50mm	100mm	150mm	200mm	.....	990mm
	1000	1500	2000	3000	.....	9999
	1M	1.5M	2M	3M	.....	9.999M

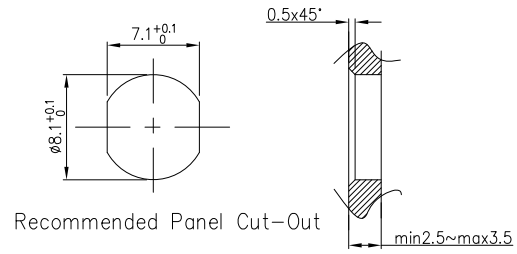
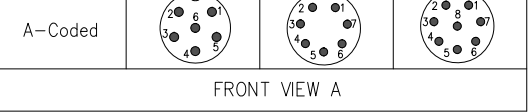
Dimensions L (mm)				
Range(length)	50 to 200	201 to 1000	1001 to 5000	5000 to 9999
Tolerance(mm)	±10	±15	±25	±30

3	4	4	5
blue	black	black	grey
1	1	1	1
brown	brown	brown	brown
2	2	2	2
white	white	white	white
3	3	3	3
blue	blue	blue	blue
4	4	4	4
black	black	black	black
5	5	5	5
grey	grey	grey	grey

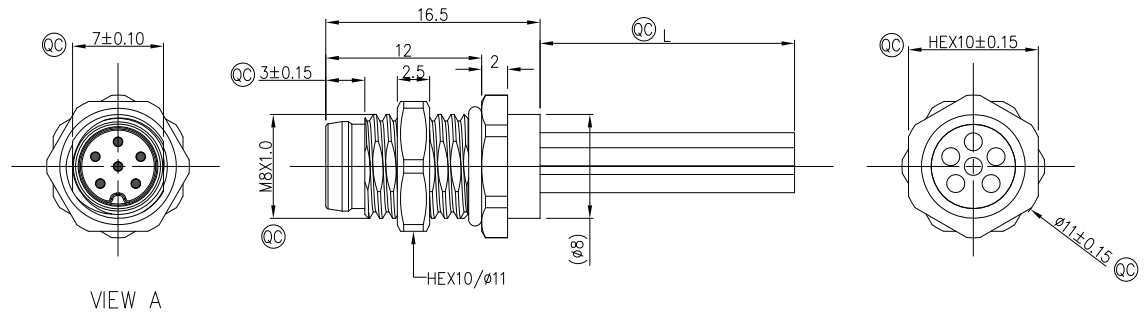
Connector locking system	M8X1.0 Screw
Wiring type	Crimp
Degree of protection	IP68(in mated condition)
Mechanical operation	> 100 mating cycles
Upper temperature	105°C
Lower temperature	-40°C
Pollution degree	3
Overvoltage categorie	II
Material group	II
Material of contact	Copper alloy
Contact plating	Au
Material of contact body	PA
Sealing	EPDM
Material of housing	Copper nickel plated

 THIRD ANGLE PROJECTION DESIGN UNITS Metric SCALE 2:1 SIZE A4	GENERAL TOLERANCES (UNLESS SPECIFIED)		APPROVE BY	DATE	PART NO.	ITEM NO.	 Building Technology Cornerstone REV 0 SHEET NO. 1/2
	X.±0.30	.X.±5'	FRANK	13/Dec/23	FM8WT0420-XXXXP104XXXX00	FM8WT0420	
	X.XX±0.20	.X.X±2'	CHECKED BY	DATE	TITLE		
	X.XX±0.15	.XX±1'	CERRY	13/Dec/23	Front fastened M8x1.0 Male Socket 【double section】with lize,free end		
X.XXX±0.10	.XXX±0.5'	DRAWN BY	DATE	THIS DRAWING CONTAINS INFORMATION THAT IS PROPRIETARY TO TXGA INDUSTRIAL ELECTRONICS(S,Z)CO.,LTD AND SHOULD NOT BE USED WITHOUT WRITTEN PERMISSION			
		LAM	13/Dec/23				

1	2	3	4	5	6	7	8			
circuits	6circuits	7circuits	8circuits		REV	LOCATIONS	DESCRIPTION	DATE	REVISER	APPD
A-Coded					0		New Release	11/DEC	LAM	FRANK



Note:  
 1. Ⓞ Important Dimension  
 2. Degree of protection: IP68  
 3. This product must meet IEC61076-2-104  
 4. This product must meet 2011/65/EU ROHS compliance.  
 5. Not note tolerances: ±0.20  
 6. Use torque values 1.0Nm



### Ordering Information

FM8W	T04	20	-	X	XX	P	1	04	XXXX	00
1	2	3	4	5	6	7	8	9		
Series Name	Mounting thread	Distinction No.	Coded	Circuits						
FM8W-M8 Wire	T04-Front fastened M8X1.0	20	A-A CODED B-B CODED	02-2Circuits 03-3Circuits 04-4Circuits 05-5Circuits 06-6Circuits 07-7Circuits 08-8Circuits						
Contact	Plating	Thickness Plating	Length							
P-Pin	1-Ep Au	04-0.1µm	XXXX-(see table1)							

TABLE 1

CABLE LENGTH (XXX)	0050	0100	0150	0200	.....	0990
	50mm	100mm	150mm	200mm	.....	990mm
	1M	1.5M	2M	3M	.....	9.999M

Dimensions L (mm)				
Range(length)	50 to 200	201 to 1000	1001 to 5000	5000 to 9999
Tolerance(mm)	±10	±15	±25	±30

			Connector locking system	M8X1.0 Screw
			Wiring type	Crimp
			Degree of protection	IP68(in mated condition)
			Mechanical operation	> 100 mating cycles
			Upper temperature	105°C
			Lower temperature	-40°C
			Pollution degree	3
			Overvoltage categorie	II
			Material group	II
			Material of contact	Copper alloy
			Contact plating	Au
			Material of contact body	PA
			Sealing	EPDM
			Material of housing	Copper nickel plated

 THIRD ANGLE PROJECTION  DESIGN UNITS Metric  SCALE 2:1 SIZE A4	GENERAL TOLERANCES (UNLESS SPECIFIED)		APPROVE BY	DATE	PART NO.	ITEM NO.	 Building Technology Cornerstone REV 0 SHEET NO. 2/2 THIS DRAWING CONTAINS INFORMATION THAT IS PROPRIETARY TO TXGA INDUSTRIAL ELECTRONICS(S,Z)CO.,LTD AND SHOULD NOT BE USED WITHOUT WRITTEN PERMISSION
	X.±0.30	X.±5'	FRANK	13/Dec/23	FM8WT0420-XXXX104XXXX00	FM8WT0420	
	X.X±0.20	.X'±2'	CHECKED BY	DATE	TITLE		
	X.XX±0.15	.XX'±1'	CERRY	13/Dec/23	Front fastened M8x1.0 Male Socket 【double section】with lize,free end		
X.XXX±0.10	.XXX'±0.5'	DRAWN BY	DATE				
		LAM	13/Dec/23				