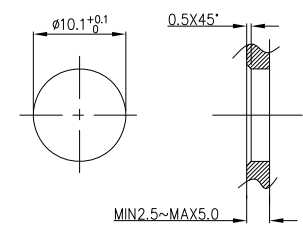
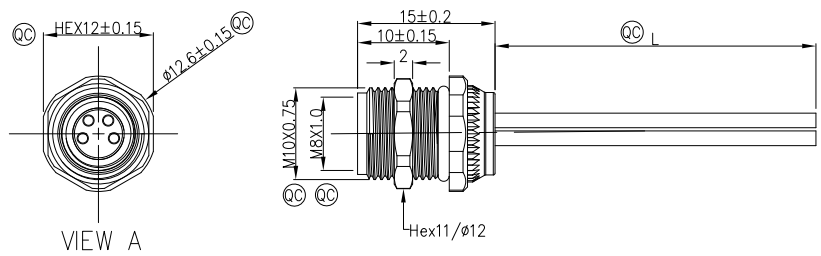


1	2	3	4	5	6	7	8				
Circuits	2Circuits	3Circuits	4Circuits	Circuits	5Circuits	REV	LOCATIONS	DESCRIPTION	DATE	REVISER	APPD
A-Coded				B-Coded		0		New Release	4/DEC	LAM	FRANK
FRONT VIEW A											



Note:  
 1. Ⓞ Important Dimension  
 2. Waterproof Rate: IP68  
 3. This product must meet IEC61076-2-104  
 4. This product must meet 2011/65/EU ROHS compliance.  
 5. Not note tolerances:  $\pm 0.20$   
 6. Use torque values 1Nm

Recommended Panel Cut-Out



Ordering Information

FM8W WT05 17 - X XX S 1 04 XXXX 00  
 1 2 3 4 5 6 7 8 9

1 Series Name FM8W-M8 Wire	2 Mounting thread WT05-Front fastened M10X0.75	3 Distinction No. 17	4 Coded A-A CODED B-B CODED	5 Circuits 02-2Circuits 03-3Circuits 04-4Circuits 05-5Circuits 06-6Circuits 07-7Circuits 08-8Circuits
6 Contact S- Socket	7 Plating 1-Ep Au	8 Thickness Plating 04-0.1 $\mu$ m	9 Length XXXX-(see table1)	

TABLE 1

CABLE LENGTH (XXX)	0050	0100	0150	0200	.....	0990
	50mm	100mm	150mm	200mm	.....	990mm
	1000	1500	2000	3000	.....	9999
	1M	1.5M	2M	3M	.....	9.999M

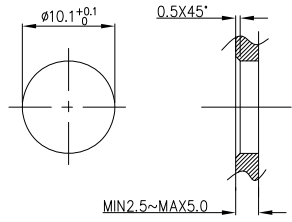
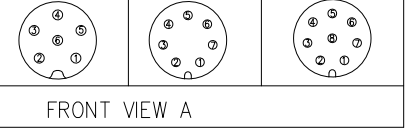
Dimensions L (mm)				
Range(length)	50 to 200	201 to 1000	1001 to 5000	5000 to 9999
Tolerance(mm)	$\pm 10$	$\pm 15$	$\pm 25$	$\pm 30$

3	4	3	4
blue	black	blue	black
1	1	2	2
brown	brown	white	white
Circuits	Color	Circuits	Color
2Circuits	Rated Voltage	Rated impulse Voltage	Rated Currnt (40°C)
3Circuits	60V DC	1500V	4A
4Circuits	60V DC	1500V	4A
5Circuits	60V DC	1500V	4A
	Contact resistance	Insulation resistance	Wire Size(mm <sup>2</sup> )/AWG
	$\leq 5m\Omega$	$\geq 100M\Omega$	0.35mm <sup>2</sup> /22AWG

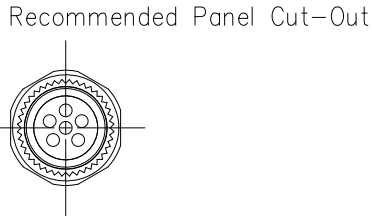
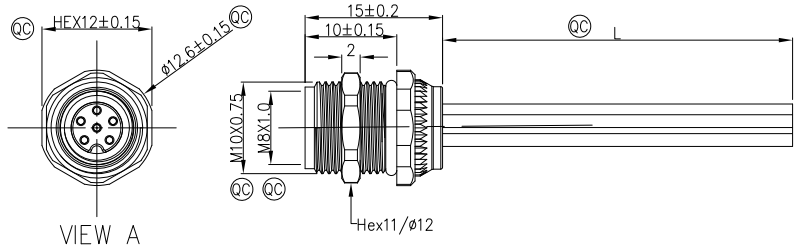
Connector locking system	Screw
Wiring type	Crimp
Degree of protection	IP68(in mated condition)
Mechanical operation	> 100 mating cycles
Upper temperature	105°C
Lower temperature	-40°C
Pollution degree	3
Overvoltage categorie	II
Material group	II
Material of contact	CuZn (Messing/brass)
Contact plating	Au
Material of contact body	PA
Sealing	EPDM
Material of housing	Brass nickel plated

 THIRD ANGLE PROJECTION DESIGN UNITS Metric SCALE 2:1 SIZE A4	GENERAL TOLERANCES (UNLESS SPECIFIED)		APPROVE BY	DATE	PART NO.	ITEM NO.	 Building Technology Cornerstone REV 0 SHEET NO. 1/2
	X. $\pm 0.30$	X. $\pm 5^*$	FRANK	4/DEC/23	FM8WT0517-XXXX104XXXX00	FM8WT0517	
	X.X. $\pm 0.20$	.X. $\pm 2^*$	CHECKED BY	DATE	TITLE		
	X.XX. $\pm 0.15$	.XX. $\pm 1^*$	CERRY	4/DEC/23	M8X1.0 female socket front fastened M10X0.75 Crimp terminal [Circle]		
X.XXX. $\pm 0.10$	.XXX. $\pm 0.5^*$	DRAWN BY	DATE	THIS DRAWING CONTAINS INFORMATION THAT IS PROPRIETARY TO TXGA INDUSTRIAL ELECTRONICS(S,Z)CO.,LTD AND SHOULD NOT BE USED WITHOUT WRITTEN PERMISSION			
		LAM	4/DEC/23				

1	2	3	4	5	6	7	8			
Circuits	6Circuits	7Circuits	8Circuits		REV	LOCATIONS	DESCRIPTION	DATE	REVISER	APPD
A-Coded					0		New Release	4/DEC	LAM	FRANK



Note:  
 1. Ⓞ Important Dimension  
 2. Waterproof Rate: IP68  
 3. This product must meet IEC61076-2-104  
 4. This product must meet 2011/65/EU ROHS compliance.  
 5. Not note tolerances:  $\pm 0.20$   
 6. Use torque values 1Nm



### Ordering Information

FM8W WT05 17 - X XX S 1 04 XXXX 00  
 1 2 3 4 5 6 7 8 9

1 Series Name - 2 Mounting thread - 3 Distinction No. - 4 Coded - 5 Circuits  
 FM8W-M8 Wire WT05-Front fastened M10X0.75 17 A-A CODED B-B CODED 02-2Circuits 03-3Circuits 04-4Circuits 05-5Circuits 06-6Circuits 07-7Circuits 08-8Circuits

6 Contact - 7 Plating - 8 Thickness Plating - 9 Length  
 S-socket 1-Ep Au 04-0.1μm XXXX-(see table1)

TABLE 1

CABLE LENGTH (XXX)	0050	0100	0150	0200	.....	0990
	50mm	100mm	150mm	200mm	.....	990mm
	1000	1500	2000	3000	.....	9999
	1M	1.5M	2M	3M	.....	9.999M

Dimensions L (mm)				
Range(length)	50 to 200	201 to 1000	1001 to 5000	5000 to 9999
Tolerance(mm)	±10	±15	±25	±30

			7	blue	7	blue	Connector locking system	Screw
6	purple	6	pink	6	pink	6	Wiring type	Crimp
5	grey	5	grey	5	grey	5	Degree of protection	IP68(in mated condition)
4	black	4	yellow	4	yellow	4	Mechanical operation	> 100 mating cycles
3	blue	3	green	3	green	3	Upper temperature	105°C
2	white	2	brown	2	brown	2	Lower temperature	-40°C
1	brown	1	white	1	white	1	Pollution degree	3
Circuits	Color	Circuits	Color	Circuits	Color	Circuits	Overvoltage categorie	II
Circuits	Rated Voltage	Rated impulse Voltage	Rated Current (40°C)	Contact resistance	Insulation resistance	Wire Size(mm <sup>2</sup> )/AWG	Material group	II
6Circuits	30V DC	800V	1.5A	≤5mΩ	≥100MΩ	0.25mm <sup>2</sup> /24AWG	Material of contact	CuZn (Messing/brass)
7Circuits	30V DC	800V	1.5A	≤5mΩ	≥100MΩ	0.14mm <sup>2</sup> /26AWG	Contact plating	Au
8Circuits	30V DC	800V	1.5A	≤5mΩ	≥100MΩ	0.14mm <sup>2</sup> /26AWG	Material of contact body	PA
							Sealing	EPDM
							Material of housing	Brass nickel plated

 THIRD ANGLE PROJECTION DESIGN UNITS Metric SCALE 2:1 SIZE A4	GENERAL TOLERANCES (UNLESS SPECIFIED)		APPROVE BY FRANK	DATE 4/DEC/23	PART NO. FM8WT0517-XXS104XXXX00	ITEM NO. FM8WT0517	 Building Technology Cornerstone
	X.±0.30	.X'±5'	CHECKED BY CHERRY	DATE 4/DEC/23	TITLE M8X1.0 female socket front fastened M10X0.75 Crimp terminal [Circle]		
	X.XX±0.20	.XX'±2'	DRAWN BY LAM	DATE 4/DEC/23	THIS DRAWING CONTAINS INFORMATION THAT IS PROPRIETARY TO TXGA INDUSTRIAL ELECTRONICS(S,Z)CO.,LTD AND SHOULD NOT BE USED WITHOUT WRITTEN PERMISSION		
	X.XX±0.15	.XX'±1'					
X.XXX±0.10	.XXX'±0.5'						