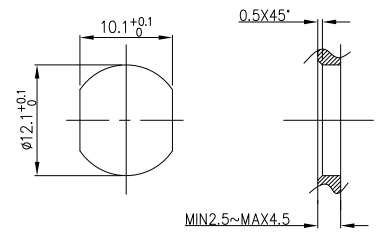
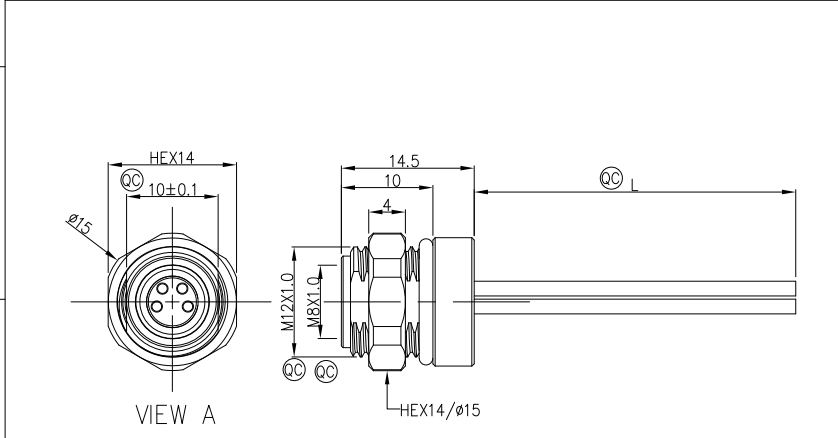


1	2	3	4	5	6	7	8				
Circuits	2Circuits	3Circuits	4Circuits	Circuits	5Circuits	REV	LOCATIONS	DESCRIPTION	DATE	REVISER	APPD
A-Coded				B-Coded		0		New Release	4/DEC	LAM	FRANK
FRONT VIEW A											



Note:
 1. Ⓞ Important Dimension
 2. Waterproof Rate: IP68
 3. This product must meet IEC61076-2-104
 4. This product must meet 2011/65/EU ROHS compliance.
 5. Not note tolerances: ±0.20
 6. Use torque values 1Nm

Recommended Panel Cut-Out

Ordering Information

FM8W WT07 18 - X XX S 1 04 XXXX 00
 1 2 3 4 5 6 7 8 9

1 Series Name FM8W-M8 Wire	2 Mounting thread WT07-Front fastened M12X1.0	3 Distinction No. 18	4 Coded A-A CODED B-B CODED	5 Circuits 02-2Circuits 03-3Circuits 04-4Circuits 05-5Circuits 06-6Circuits 07-7Circuits 08-8Circuits
6 Contact S- Socket	7 Plating 1- Ep Au	8 Thickness Plating 04-0.1µm	9 Length XXXX-(see table1)	

TABLE 1

CABLE LENGTH (XXX)	0050	0100	0150	0200	0990
	50mm	100mm	150mm	200mm	990mm
	1000	1500	2000	3000	9999
	1M	1.5M	2M	3M	9.999M

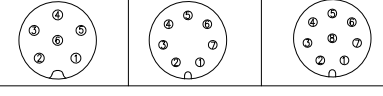
Dimensions L (mm)				
Range(length)	50 to 200	201 to 1000	1001 to 5000	5000 to 9999
Tolerance(mm)	±10	±15	±25	±30

3	4	4	5				
blue	black	black	grey				
3	3	4	4				
blue	blue	black	black				
1	1	2	2				
brown	brown	white	white				
1	1	1	1				
brown	brown	brown	brown				
Circuits	Color	Circuits	Color	Circuits	Color	Circuits	Color
Circuits	Rated Voltage	Rated impulse Voltage	Rated Currnt (40°C)	Contact resistance	Insulation resistance	Wire Size(mm²)/AWG	
2Circuits	60V DC	1500V	4A	≤5mΩ	≥100MΩ	0.35mm²/22AWG	
3Circuits	60V DC	1500V	4A	≤5mΩ	≥100MΩ	0.35mm²/22AWG	
4Circuits	60V DC	1500V	4A	≤5mΩ	≥100MΩ	0.35mm²/22AWG	
5Circuits	60V DC	1500V	4A	≤5mΩ	≥100MΩ	0.35mm²/22AWG	

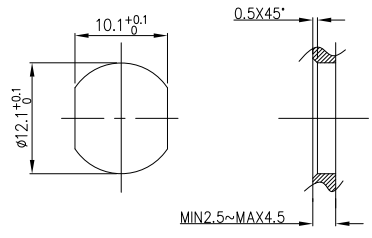
Connector locking system	Screw
Wiring type	Crimp
Degree of protection	IP68(in mated condition)
Mechanical operation	> 100 mating cycles
Upper temperature	105°C
Lower temperature	-40°C
Pollution degree	3
Overvoltage categorie	II
Material group	II
Material of contact	CuZn (Messing/brass)
Contact plating	Au
Material of contact body	PA
Sealing	EPDM
Material of housing	Brass nickel plated

 THIRD ANGLE PROJECTION DESIGN UNITS Metric SCALE 2:1 SIZE A4	GENERAL TOLERANCES (UNLESS SPECIFIED)		APPROVE BY	DATE	PART NO.	ITEM NO.	 Building Technology Cornerstone REV 0 SHEET NO. 1/2 THIS DRAWING CONTAINS INFORMATION THAT IS PROPRIETARY TO TXGA INDUSTRIAL ELECTRONICS(S,Z)CO.,LTD AND SHOULD NOT BE USED WITHOUT WRITTEN PERMISSION
	X.±0.30	.X'±5'	FRANK	4/DEC/23	FM8WT0718-XXXX104XXXX00	FM8WT0718	
	X.X±0.20	.X'±2'	CHECKED BY	DATE	TITLE		
	X.XX±0.15	.XX'±1'	CERRY	4/DEC/23	M8X1.0 female socket front fastened M12X1.0 Crimp terminal [double section]		
X.XXX±0.10	.XXX'±0.5'	DRAWN BY	DATE				
		LAM	4/DEC/23				

1	2	3	4	5	6	7	8			
Circuits	6Circuits	7Circuits	8Circuits		REV	LOCATIONS	DESCRIPTION	DATE	REVISER	APPD
A-Coded					0		New Release	4/DEC	LAM	FRANK

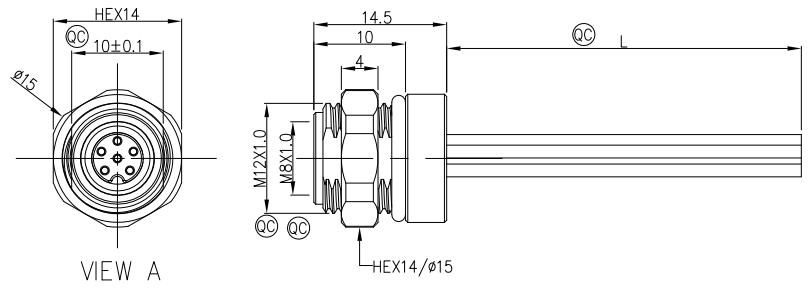


FRONT VIEW A



Recommended Panel Cut-Out

- Note:
- ① Important Dimension
 - Waterproof Rate: IP68
 - This product must meet IEC61076-2-104
 - This product must meet 2011/65/EU ROHS compliance.
 - Not note tolerances: ±0.20
 - Use torque values 1Nm



VIEW A

Ordering Information

FM8W WT07 18 - X XX S 1 04 XXXX 00
 1 2 3 4 5 6 7 8 9

1 Series Name FM8W-M8 Wire	2 Mounting thread WT07-Front fastened M12X1.0	3 Distinction No. 18	4 Coded A-A CODED B-B CODED	5 Circuits 02-2Circuits 03-3Circuits 04-4Circuits 05-5Circuits 06-6Circuits 07-7Circuits 08-8Circuits
6 Contact S- Socket	7 Plating 1- Ep Au	8 Thickness Plating 04-0.1μm	9 Length XXXX-(see table1)	

TABLE 1

CABLE LENGTH (XXX)	0050	0100	0150	0200	0990
	50mm	100mm	150mm	200mm	990mm
	1000	1500	2000	3000	9999
	1M	1.5M	2M	3M	9.999M

Dimensions L (mm)				
Range(length)	50 to 200	201 to 1000	1001 to 5000	5000 to 9999
Tolerance(mm)	±10	±15	±25	±30

Circuits	Color	Circuits	Color	Circuits	Color	Connector locking system	Screw
6	purple	7	blue	8	red	Connector locking system	Screw
6	pink	7	blue	7	blue	Wiring type	Crimp
5	grey	5	grey	5	grey	Degree of protection	IP68(in mated condition)
4	black	4	yellow	4	yellow	Mechanical operation	> 100 mating cycles
3	blue	3	green	3	green	Upper temperature	105°C
2	white	2	brown	2	brown	Lower temperature	-40°C
1	brown	1	white	1	white	Pollution degree	3
1	white	1	white	1	white	Overvoltage categorie	II
6Circuits	30V DC	800V	1.5A	≤5mΩ	≥100MΩ	Material group	II
7Circuits	30V DC	800V	1.5A	≤5mΩ	≥100MΩ	Material of contact	CuZn (Messing/brass)
8Circuits	30V DC	800V	1.5A	≤5mΩ	≥100MΩ	Contact plating	Au
						Material of contact body	PA
						Sealing	EPDM
						Material of housing	Brass nickel plated

<p>THIRD ANGLE PROJECTION</p>	GENERAL TOLERANCES (UNLESS SPECIFIED)		APPROVE BY	DATE	PART NO.	ITEM NO.	<p>Building Technology Cornerstone</p>	
	X.±0.30	.X'±5'	FRANK	4/DEC/23	FM8WT0718-XXS104XXXX00	FM8WT0718		
	DESIGN UNITS Metric		CHECKED BY	DATE	TITLE	M8X1.0 female socket front fastened M12X1.0 Crimp terminal [double section]		
	X.XX±0.20	.X'±2'	CERRY	4/DEC/23				
SCALE	SIZE	DRAWN BY		DATE	THIS DRAWING CONTAINS INFORMATION THAT IS PROPRIETARY TO TXGA INDUSTRIAL ELECTRONICS(S,Z)CO.,LTD AND SHOULD NOT BE USED WITHOUT WRITTEN PERMISSION			
2:1	A4	LAM		4/DEC/23				
					REV 0	SHEET NO. 2/2		