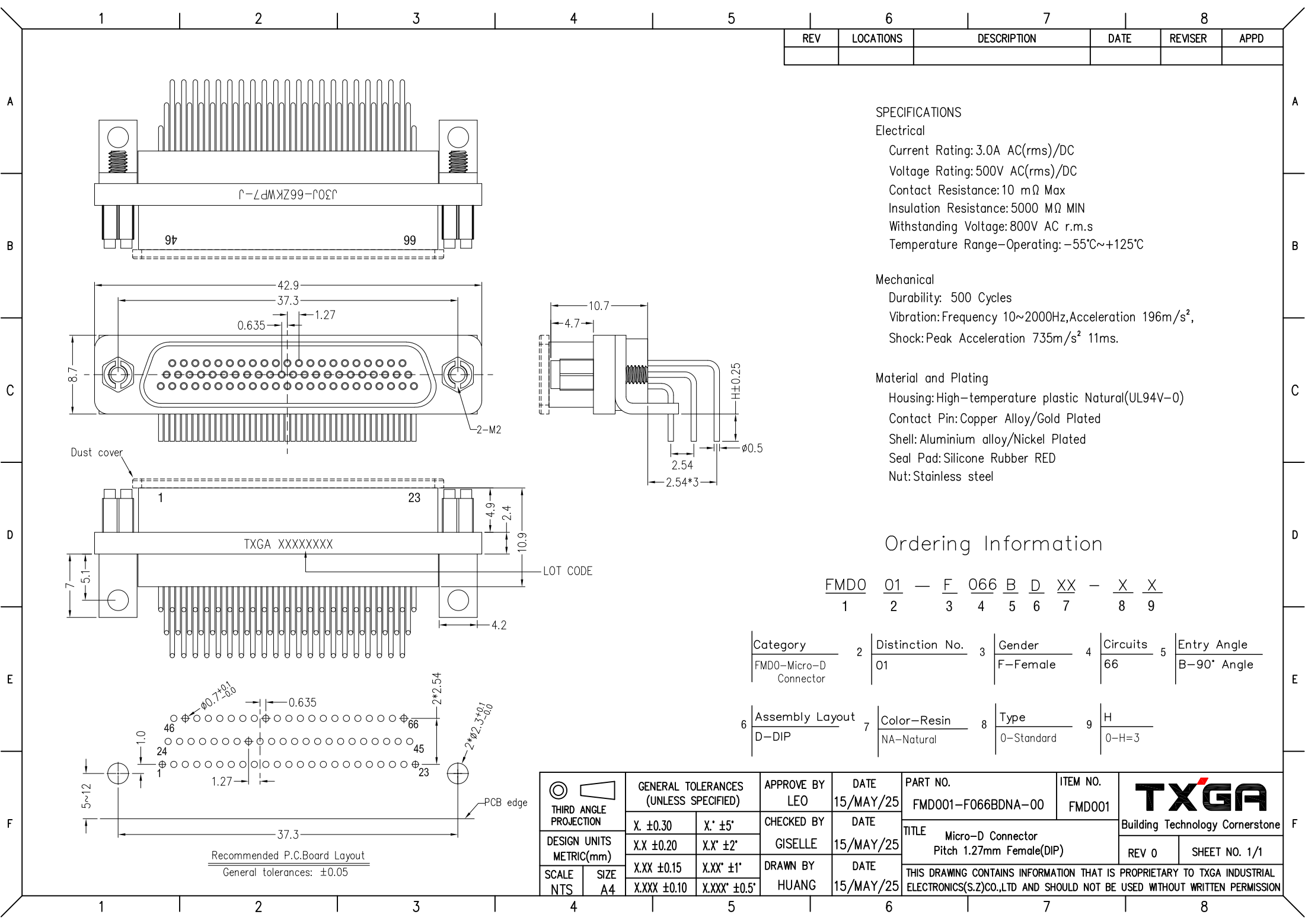


REV	LOCATIONS	DESCRIPTION	DATE	REVISER	APPD



**SPECIFICATIONS**

**Electrical**

- Current Rating: 3.0A AC(rms)/DC
- Voltage Rating: 500V AC(rms)/DC
- Contact Resistance: 10 mΩ Max
- Insulation Resistance: 5000 MΩ MIN
- Withstanding Voltage: 800V AC r.m.s
- Temperature Range-Operating: -55°C~+125°C

**Mechanical**

- Durability: 500 Cycles
- Vibration: Frequency 10~2000Hz, Acceleration 196m/s<sup>2</sup>,
- Shock: Peak Acceleration 735m/s<sup>2</sup> 11ms.

**Material and Plating**


- Housing: High-temperature plastic Natural(UL94V-0)
- Contact Pin: Copper Alloy/Gold Plated
- Shell: Aluminium alloy/Nickel Plated
- Seal Pad: Silicone Rubber RED
- Nut: Stainless steel

**Ordering Information**

FMD0 01 — F 066 B D XX — X X  
 1 2 3 4 5 6 7 8 9

Category	2	Distinction No.	3	Gender	4	Circuits	5	Entry Angle
FMD0-Micro-D Connector	01	F-Female		66		B-90° Angle		
Assembly Layout	6	Color-Resin	7	Type	8	H	9	
D-DIP		NA-Natural		0-Standard		0-H=3		

Recommended P.C.Board Layout  
 General tolerances: ±0.05

THIRD ANGLE PROJECTION	GENERAL TOLERANCES (UNLESS SPECIFIED)		APPROVE BY	DATE	PART NO.	ITEM NO.	 Building Technology Cornerstone
	X. ±0.30	X.' ±5'	LEO	15/MAY/25	FMD001-F066BDNA-00	FMD001	
DESIGN UNITS METRIC(mm)	X.X ±0.20	X.X' ±2'	CHECKED BY	DATE	TITLE		REV 0
SCALE NTS	X.XX ±0.15	X.XX' ±1'	GISELLE	15/MAY/25	Micro-D Connector Pitch 1.27mm Female(DIP)		SHEET NO. 1/1
SIZE A4	X.XXX ±0.10	X.XXX' ±0.5'	DRAWN BY	DATE	THIS DRAWING CONTAINS INFORMATION THAT IS PROPRIETARY TO TXGA INDUSTRIAL ELECTRONICS(S.Z)CO.,LTD AND SHOULD NOT BE USED WITHOUT WRITTEN PERMISSION		
			HUANG	15/MAY/25			