

REV	LOCATIONS	DESCRIPTION	DATE	REVISER	APPD

**SPECIFICATIONS**

**Electrical**

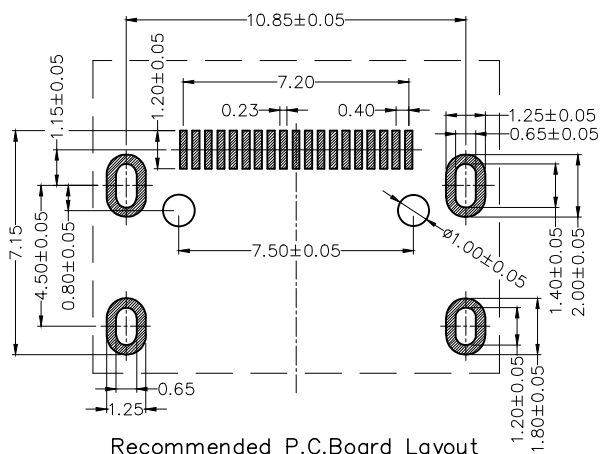
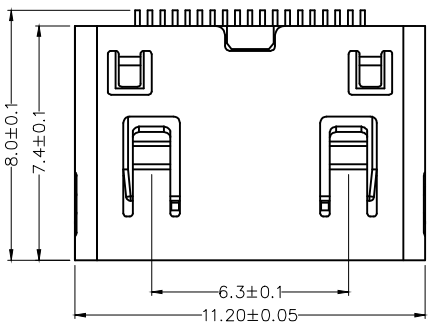
Current Rating: 0.5A AC(rms)/DC  
 Voltage Rating: 40V AC(rms)/DC  
 Contact Resistance: 30 mΩ Max  
 Insulation Resistance: 100 MΩ Min  
 Withstanding Voltage: 500V AC r.m.s  
 Operating Temperature: -20°C~+85°C

**Mechanical**

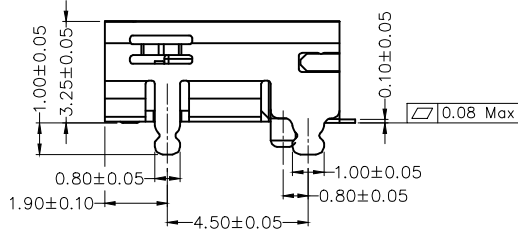
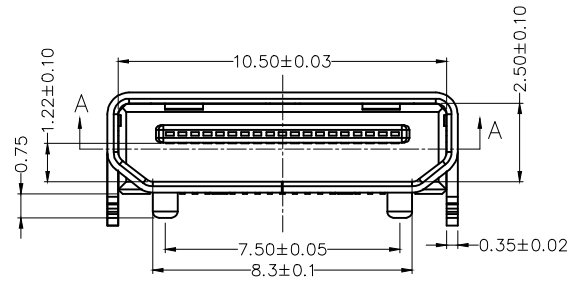
Insertion force: 44.1 N Max  
 Withdrawal force: 7~25 N  
 Durability: 5,000 cycles Min

**Material And Plating**

Housing: LCP (UL 94V-0) Black  
 Contact: Brass/ Gold flash  
 Shell: Brass/ Nickel plated

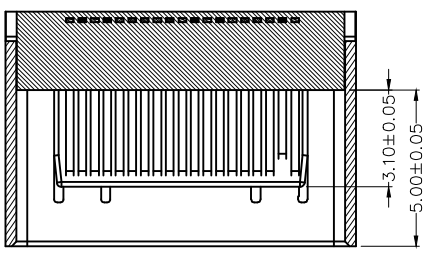
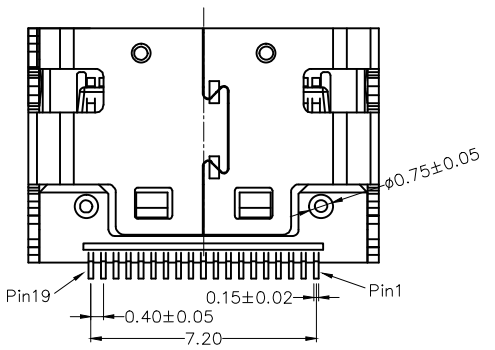


**Recommended P.C.Board Layout**  
 General tolerances: ±0.05



0.08 Max

**SEC A-A**



Pin	Signal assignment	Pin	Signal assignment
1	TMDS Data2 Shield	11	TMDS Clock+
2	TMDS Data2+	12	TMDS Clock-
3	TMDS Data2-	13	DDC/CEC Ground
4	TMDS Data1 Shield	14	CEC
5	TMDS Data1+	15	SCL
6	TMDS Data1-	16	SDA
7	TMDS Data0 Shield	17	Utility
8	TMDS Data0+	18	+5V Power
9	TMDS Data0-	19	Hot Plug Detect
10	TMDS Clock Shield		

<p>THIRD ANGLE PROJECTION</p>	GENERAL TOLERANCES (UNLESS SPECIFIED)		APPROVE BY FRANK	DATE 17/JUN/21	PART NO. FMH07-FSB100BKM	ITEM NO. FMH07	<p>Leader Of Industry</p>	
	X. ±0.30	X.* ±5°	CHECKED BY	DATE	TITLE MINI HDMI C-type 19 Circuits 90°Angle Female(SMT)			
	DESIGN UNITS Metric	X.X ±0.20	X.X* ±2°	CHERRY	17/JUN/21	REV 0		SHEET NO. 1/1
	SCALE 5:1	SIZE A4	X.XX ±0.15	X.XX* ±1°	DRAWN BY KATE	DATE 17/JUN/21		THIS DRAWING CONTAINS INFORMATION THAT IS PROPRIETARY TO TXGA INDUSTRIAL ELECTRONICS(S,Z)CO.,LTD AND SHOULD NOT BE USED WITHOUT WRITTEN PERMISSION