

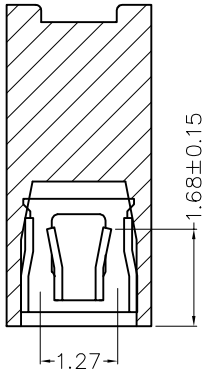
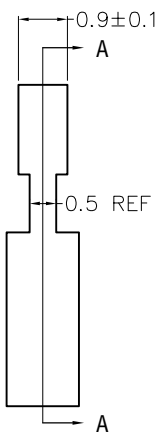
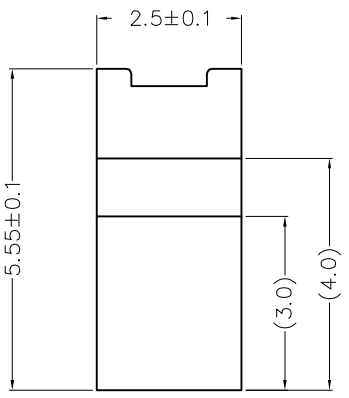
1 2 3 4 5 6 7 8

REV	LOCATIONS	DESCRIPTION	DATE	REVISER	APPD
1		New Drawing	06/JUN/25	MATT	LEO

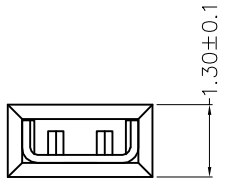
SPECIFICATIONS

Electrical  
 Current Rating: 1A AC(rms)/DC  
 Contact Resistance: 20 mΩ Max  
 Insulation Resistance: 1000 MΩ Min.  
 Withstanding Voltage: 500V AC r.m.s  
 Temperature Range—Operating: -40°C~+105°C

Material and Plating  
 Housing: PBT (UL 94V-0) Black  
 Contacts: Phosphor Bronze/ Gold flash on contact area,  
 Nickel plated under over all



Section A-A



<p>THIRD ANGLE PROJECTION</p>	GENERAL TOLERANCES (UNLESS SPECIFIED)		APPROVE BY VERNON	DATE 14/JUL/16	PART NO. FMJ12702-011K6B	ITEM NO. FMJ12702	<p>Building Technology Cornerstone</p>	
	X.±0.30	X.±5°	CHECKED BY KATE	DATE 14/JUL/16	TITLE Mini Jumper Pitch 1.27mm			REV 1
	DESIGN UNITS Metric(mm)	X.X±0.20	.X±2°	DRAWN BY LXF	DATE 14/JUL/16	THIS DRAWING CONTAINS INFORMATION THAT IS PROPRIETARY TO TXGA INDUSTRIAL ELECTRONICS(S.Z)CO.,LTD AND SHOULD NOT BE USED WITHOUT WRITTEN PERMISSION		
	SCALE 5:1	SIZE A4	X.XXX±0.10	.XXX±0.5°				

1 2 3 4 5 6 7 8