

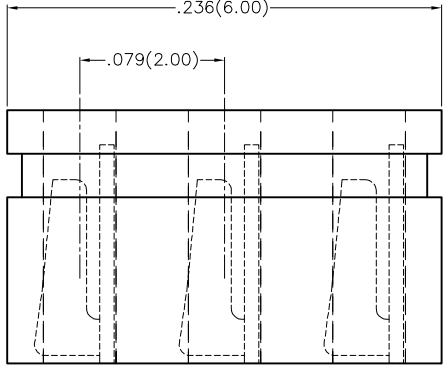
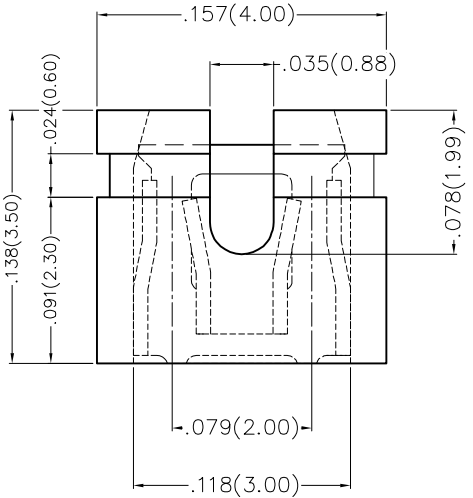
1 2 3 4 5 6 7 8

REV	LOCATIONS	DESCRIPTION	DATE	REVISER	APPD

SPECIFICATIONS

Electrical
 Current Rating: 3A AC(rms)/DC
 Insulation Resistance: 1000 MΩ Min.
 Withstanding Voltage: 500V AC r.m.s
 Temperature Range—Operating: -40°C~+105°C

Material and Plating
 Housing: PBT (UL 94V-0) Black
 Contacts: Brass/ Nickel Plated



<p>THIRD ANGLE PROJECTION</p>	GENERAL TOLERANCES (UNLESS SPECIFIED)		APPROVE BY	DATE	PART NO.	ITEM NO.	<p>Leader Of Industry</p>	
	X.±.012(0.30)	X'.±5'	FRANK	14/SEP/16	FMJ20001-036K6B	FMJ20001		
	X.X±.008(0.20)	.X'±2"	CHECKED BY	DATE	TITLE			
DESIGN UNITS Inch (metric)	X.XX±.006(0.15)	.XX'±1"	CHERRY	14/SEP/16	Mini Jumper Pitch 2mm		REV 0	SHEET NO. 1/1
SCALE 5:1	SIZE A4	X.XXX±.004(0.10)	.XXX'±0.5'	DRAWN BY	DATE	THIS DRAWING CONTAINS INFORMATION THAT IS PROPRIETARY TO TXGA INDUSTRIAL ELECTRONICS(S.Z)CO.,LTD AND SHOULD NOT BE USED WITHOUT WRITTEN PERMISSION		
			KATE	14/SEP/16				

1 2 3 4 5 6 7 8