

REV	LOCATIONS	DESCRIPTION	DATE	REVISER	APPD

SPECIFICATIONS

Electrical

Current Rating: 3A AC(rms)/DC

Insulation Resistance: 1000 MΩ Min.

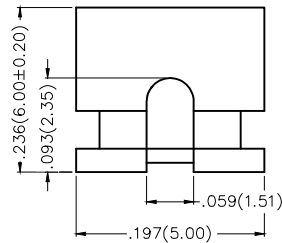
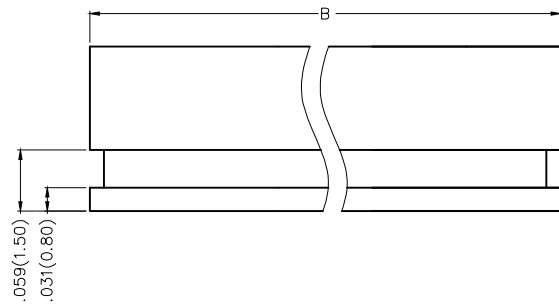
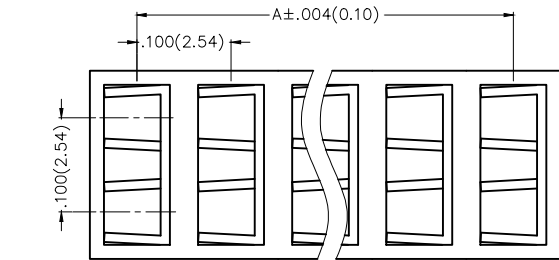
Withstanding Voltage: 500V AC r.m.s

Temperature Range-Operating: -55°C~+105°C

Material and Plating

Housing: PBT (UL 94V-0) Black

Contacts: Brass/ Nickel Plated



Circuits (n)	Part No.	Dimensions(in/mm)	
		A	B
2	FMJ25401-026K6B	.100(2.54)	.200(5.08)
3	FMJ25401-036K6B	.200(5.08)	.300(7.62)
4	FMJ25401-046K6B	.300(7.62)	.400(10.16)
5	FMJ25401-056K6B	.400(10.16)	.500(12.70)
6	FMJ25401-066K6B	.500(12.70)	.600(15.24)
7	FMJ25401-076K6B	.600(15.24)	.700(17.78)
8	FMJ25401-086K6B	.700(17.78)	.800(20.32)
9	FMJ25401-096K6B	.800(20.32)	.900(22.86)

Ordering Information

FMJ 254 01 - XX 6 K6 B  
 1 2 3 4 5 6 7

1 Category	2 Series Number	3 Distinction No.	4 Circuits	5 Plating	6 Color-Resin	7 Packaging
FMJ-Mini Jumper	254-Pitch2.54mm	01	XX	6-Nickel Plated	K6-Black	B-PE Bag

 THIRD ANGLE PROJECTION	GENERAL TOLERANCES (UNLESS SPECIFIED)		APPROVE BY	DATE	PART NO.	ITEM NO.	 Leader Of Industry
	X.±.012(0.30)	X.*±5'	FRANK	14/JUL/16	FMJ25401-XX6K6B	FMJ25401	
DESIGN UNITS	X.X±.008(0.20)	X.*±2'	CHECKED BY	DATE	TITLE		REV 0
Inch (metric)	X.XX±.006(0.15)	X.*±1'	CHERRY	14/JUL/16	.100"(2.54) PITCH MINI JUMPER		SHEET NO. 1/1
SCALE	X.XXX±.004(0.10)	X.*X±0.5'	DRAWN BY	DATE	THIS DRAWING CONTAINS INFORMATION THAT IS PROPRIETARY TO TXGA INDUSTRIAL ELECTRONICS(S,Z)CO.,LTD AND SHOULD NOT BE USED WITHOUT WRITTEN PERMISSION		
5:1			KATE	14/JUL/16			