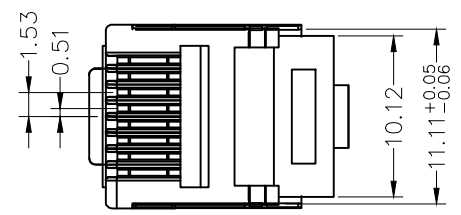
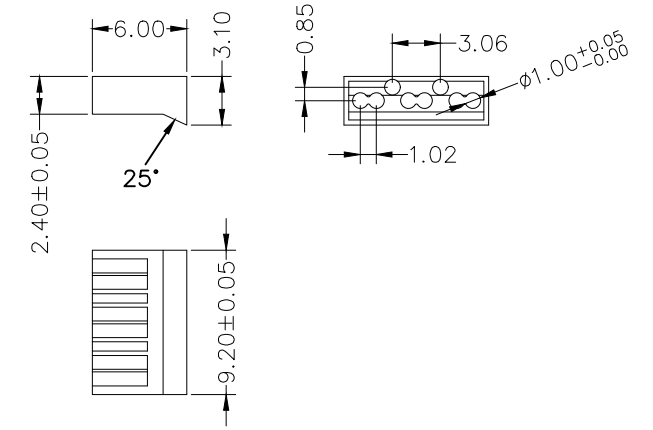
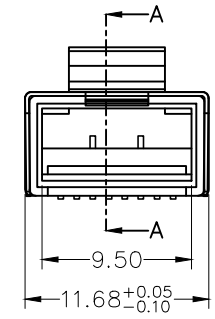
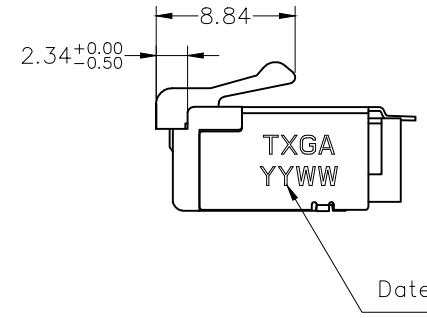
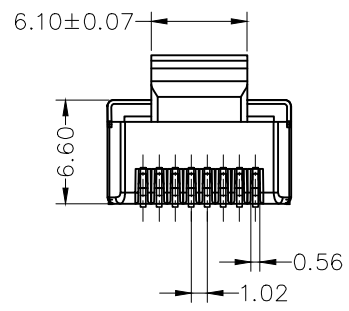
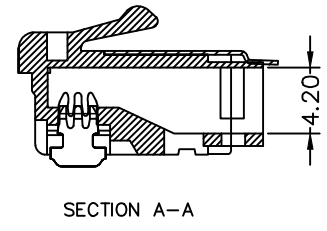
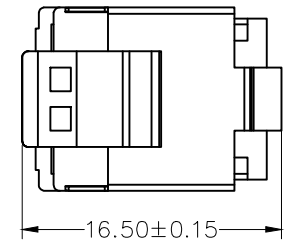


REV	LOCATIONS	DESCRIPTION	DATE	REVISER	APPD

SPECIFICATION

Electrical Performance
 Current Rating: 1.5A AC(rms)/DC
 Voltage Rating: 125V AC(rms)/DC
 Contact Resistance: 20mΩ Max
 Insulation Resistance: 500MΩ MIN
 Withstanding Voltage: 1000V AC r.m.s
 Temperature Range—Operating: -40°C~+85°C

Material and Plating
 Housing: PC, (UL 94V-0), Gray
 T Series: PC, (UL 94V-0), Clear
 Terminal: Copper alloy/Selective gold plated on contact area and matte tin plated on tails area
 Shield Cover: Copper alloy/Nickel plating



Ordering Information

FMP 20 - 7 XX B
 1 2 3 4 5

1	Category FMP-Modular Plug	2	Distinction No. 20	3	Plating 7-Selective gold plated on contact area and matte tin plated on tails area	4	thickness of Gold Plating 00-Gold flash 06-6u" 01-1u" 15-15u" 03-3u" 30-30u" 50-50u"	5	Packaging B-Bag
---	------------------------------	---	-----------------------	---	---	---	--	---	--------------------

 THIRD ANGLE PROJECTION	GENERAL TOLERANCES (UNLESS SPECIFIED)		APPROVE BY LEO	DATE 19/Sept/23	PART NO. FMP20-7XXB	ITEM NO. FMP20	 Building Technology Cornerstone
	X. ±0.30	X.* ±5°	CHECKED BY GISELLE	DATE 19/Sept/23	TITLE CAT6 8P8C Modular Plug (2 Assemblies)		
DESIGN UNITS mm	X.X ±0.20	X.X* ±2°	DRAWN BY Hejianpeng	DATE 19/Sept/23	THIS DRAWING CONTAINS INFORMATION THAT IS PROPRIETARY TO TXGA INDUSTRIAL ELECTRONICS(S,Z)CO.,LTD AND SHOULD NOT BE USED WITHOUT WRITTEN PERMISSION		
SCALE 5:1	SIZE A4	X.XX ±0.15	X.XX* ±1°				
		X.XXX ±0.10	X.XXX* ±0.5°				