

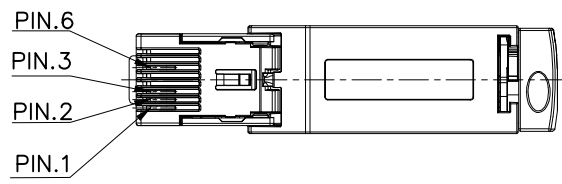
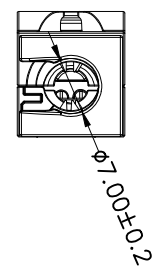
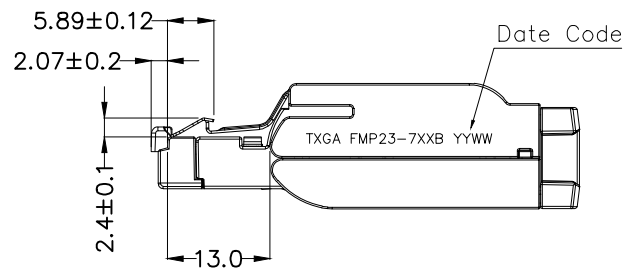
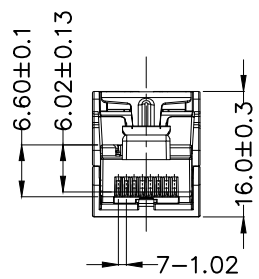
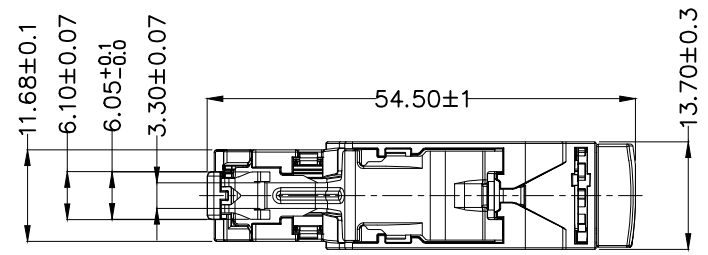
| REV | LOCATIONS | DESCRIPTION | DATE | REVISER | APPD |
|-----|-----------|-------------|------|---------|------|
|     |           |             |      |         |      |

**SPECIFICATION**

**Electrical Performance**  
 Current Rating: 1.5A AC(rms)/DC  
 Voltage Rating: 125V AC(rms)/DC  
 Contact Resistance: 20mΩ Max  
 Insulation Resistance: 500MΩ MIN  
 Withstanding Voltage: 1500V AC r.m.s  
 Temperature Range-Operating: -40°C~+85°C **Material and Plating**  
 Housing: Zinc Alloy/Nickel plating  
 Terminal: Phosphor Bronze/Selective gold plated on contact area and matte tin plated on tails area  
 Cap: PC, (UL 94V-0), Natural  
 IDC: PA66+15%, (UL 94V-0), Black  
 CAP A: Zinc Alloy/Nickel plating  
 Swivel cap: Zinc Alloy/Nickel plating  
 Terminal: Phosphor bronze/with tin plated

**Performance:**  
 T568A&T568B Wiring  
 Insertion force: 30N max  
 Retention strength: 7.7kg between Jack and Plug

**Life time:**  
 Jack: 750 cycles min  
 IDC: Suitable for 22-24AWG stranded and solid wire, min 20-installation cycles



**Ordering Information**

FMP 23 - 7 XX B  
 1 2 3 4 5

|                                  |                           |   |   |                        |
|----------------------------------|---------------------------|---|---|------------------------|
| 1   Category<br>FMP-Modular Plug | 2   Distinction No.<br>23 | 3   Plating<br>7-Selective gold plated on contact area and matte tin plated on tails area | 4   thickness of Gold Plating<br>01-1u"<br>15-15u"<br>50-50u" | 5   Packaging<br>B-Bag |
|----------------------------------|---------------------------|---|---|------------------------|

|                               |  |                    |                           |                                |                                |   |  |
|-------------------------------|--|--------------------|---------------------------|--------------------------------|--------------------------------|---|--|
| <p>THIRD ANGLE PROJECTION</p> | <p>GENERAL TOLERANCES (UNLESS SPECIFIED)</p> |                    | <p>APPROVE BY<br/>LEO</p> | <p>DATE<br/>19/Sept/23</p>     | <p>PART NO.<br/>FMP23-7XXB</p> | <p>ITEM NO.<br/>FMP23</p>   | <p><b>TXGA</b><br/>Building Technology Cornerstone</p> |
|                               | <p>DESIGN UNITS<br/>mm</p>                   | <p>X. ±0.30</p>    | <p>X.* ±5*</p>            | <p>CHECKED BY<br/>GISELLE</p>  | <p>DATE<br/>19/Sept/23</p>     | <p>TITLE<br/>CAT8 8P4C Modular Plug</p>   |  |
| <p>SCALE<br/>5:1</p>          | <p>SIZE<br/>A4</p>                           | <p>X.XX ±0.15</p>  | <p>X.XX* ±1*</p>          | <p>DRAWN BY<br/>Hejianpeng</p> | <p>DATE<br/>19/Sept/23</p>     | <p>THIS DRAWING CONTAINS INFORMATION THAT IS PROPRIETARY TO TXGA INDUSTRIAL ELECTRONICS(S,Z)CO.,LTD AND SHOULD NOT BE USED WITHOUT WRITTEN PERMISSION</p> |  |
|                               |  | <p>X.XXX ±0.10</p> | <p>X.XXX* ±0.5*</p>       |                                |                                | <p>REV 0</p>  | <p>SHEET NO. 1/1</p>                                   |