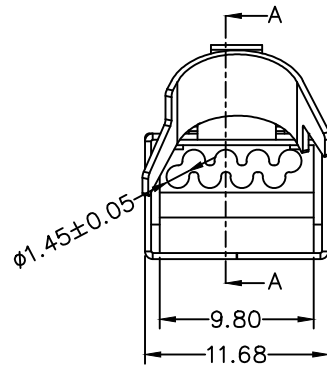
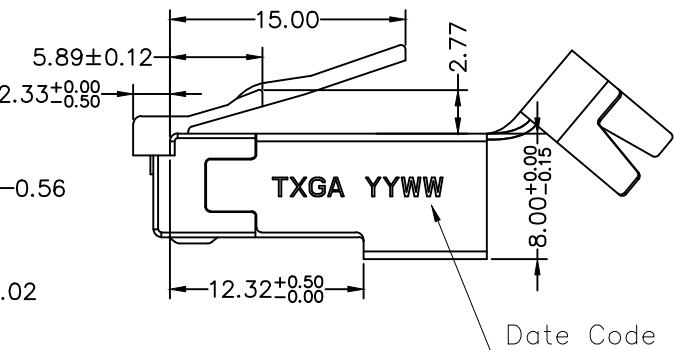
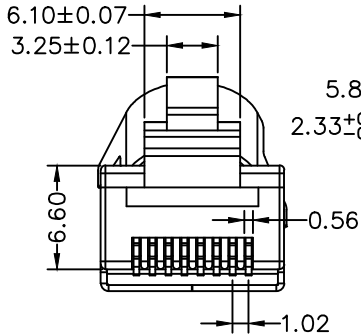
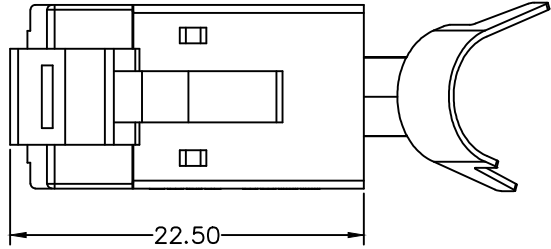
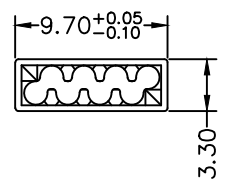
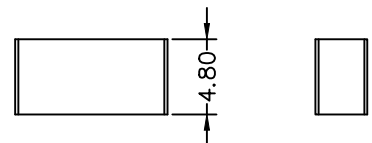
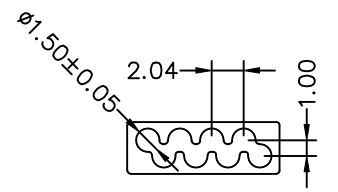
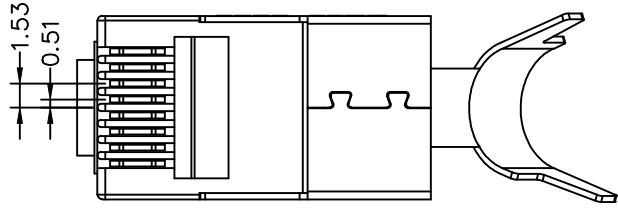
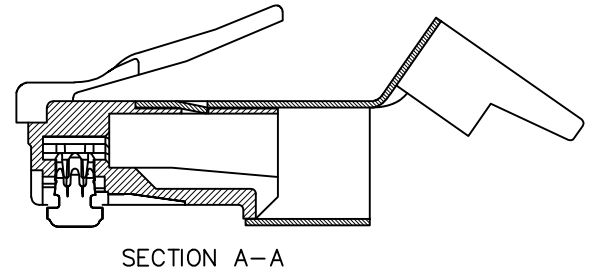


| REV | LOCATIONS | DESCRIPTION | DATE | REVISER | APPD |
|-----|-----------|-------------|------|---------|------|
| | | | | | |



SPECIFICATION
Electrical Performance
 Current Rating: 1.5A AC(rms)/DC
 Voltage Rating: 125V AC(rms)/DC
 Contact Resistance: 20mΩ Max
 Insulation Resistance: 500MΩ MIN
 Withstanding Voltage: 1000V AC r.m.s
 Temperature Range—Operating: -40°C~+85°C
Material and Plating
 Housing: PC, (UL 94V-0), Clear
 T Series: PC, (UL 94V-0), Clear
 Cable Management Frame: PC, (UL 94V-0), Clear
 Terminal: Phosphor Bronze/Selective gold plated on contact area and matte tin plated on tails area
 Shell: Copper Alloy



Ordering Information

| | | | | | | |
|-----|----|---|---|----|---|---|
| FMP | 27 | - | 7 | XX | S | X |
| 1 | 2 | | 3 | 4 | 5 | 6 |

| | | | | | | | | | | | |
|---|------------------------------|---|-----------------------|---|---|---|--|---|--------------------|---|---|
| 1 | Category FMP-Modular Plug | 2 | Distinction No. 27 | 3 | Plating 7-Selective gold plated on contact area and matte tin plated on tails area | 4 | thickness of Gold Plating 00-Gold flash 06-6u" 01-1u" 15-15u" 03-3u" 30-30u" 50-50u" | 5 | Packaging S-Box | 6 | Shell 1-Gold plated 2-Nickel plated |
|---|------------------------------|---|-----------------------|---|---|---|--|---|--------------------|---|---|

| | | | | | | | |
|-------------------------------|--|-------------------|---------------------------|--------------------------------|---------------------------------|---|--|
| <p>THIRD ANGLE PROJECTION</p> | <p>GENERAL TOLERANCES (UNLESS SPECIFIED)</p> | | <p>APPROVE BY LEO</p> | <p>DATE 19/Sept/23</p> | <p>PART NO. FMP27-7XXSX</p> | <p>ITEM NO. FMP27</p> | <p>Building Technology Cornerstone</p> |
| | <p>DESIGN UNITS mm</p> | <p>X. ±0.30</p> | <p>X.* ±5°</p> | <p>CHECKED BY GISELLE</p> | <p>DATE 19/Sept/23</p> | <p>TITLE CAT7 8P8C Modular Plug (2 Assemblies)</p> | |
| <p>SCALE 5:1</p> | <p>SIZE A4</p> | <p>X.XX ±0.15</p> | <p>X.XX* ±1°</p> | <p>DRAWN BY Hejianpeng</p> | <p>DATE 19/Sept/23</p> | <p>THIS DRAWING CONTAINS INFORMATION THAT IS PROPRIETARY TO TXGA INDUSTRIAL ELECTRONICS(S,Z)CO.,LTD AND SHOULD NOT BE USED WITHOUT WRITTEN PERMISSION</p> | |