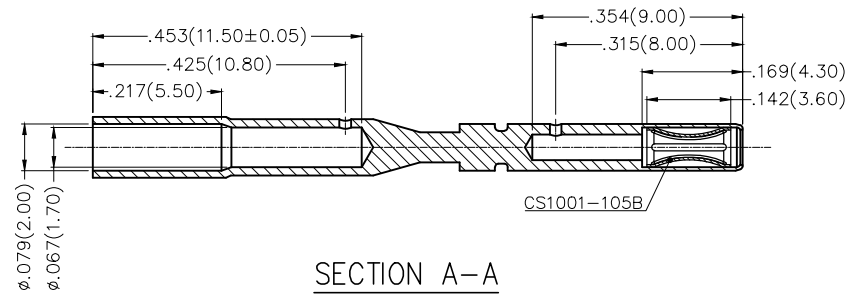
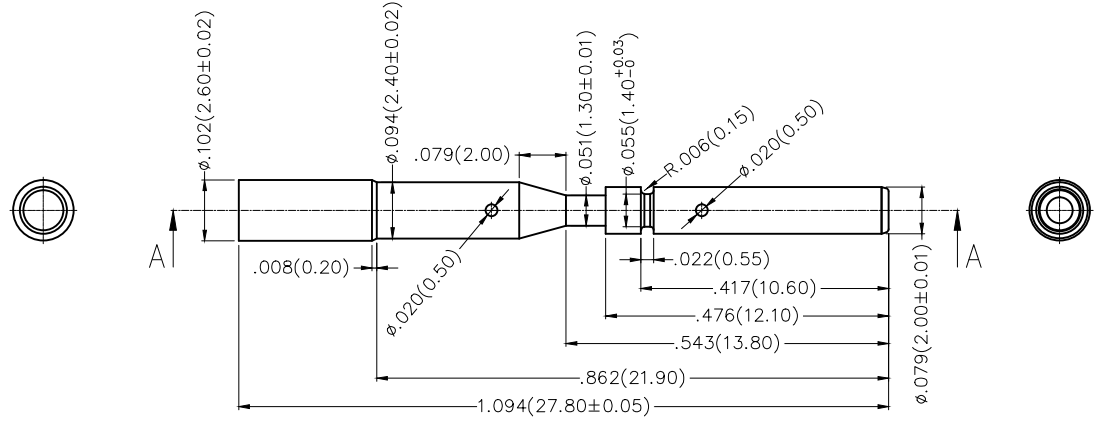


REV	LOCATIONS	DESCRIPTION	DATE	REVISER	APPD

- Notes:
- Material:
    - Machined Terminal: Brass
    - Crown Spring: Beryllium Copper
  - Plating:
    - Machined Terminal: 80µ" Sliver Plated,
    - Crown Spring: 5µ" Gold Plated,
  - Applicable Terminal: ø1.00mm
  - All Materials Meet The "RoHs"



<p>THIRD ANGLE PROJECTION</p>	GENERAL TOLERANCES (UNLESS SPECIFIED)	APPROVE BY FRANK	DATE 09/DEC/16	PART NO. FMT110-F480B	ITEM NO. FMT110	<p>Leader Of Industry</p>	
	±.002(0.05)	CHECKED BY CHERRY	DATE 09/DEC/16	TITLE Contact terminal connector			REV 0
	DESIGN UNITS Inch (metric)	±2'	DRAWN BY KATE	DATE 09/DEC/16	THIS DRAWING CONTAINS INFORMATION THAT IS PROPRIETARY TO TXGA INDUSTRIAL ELECTRONICS(S.Z)CO.,LTD AND SHOULD NOT BE USED WITHOUT WRITTEN PERMISSION		