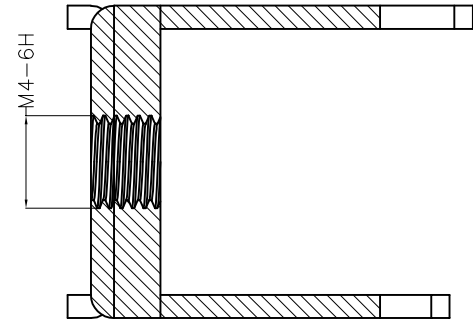
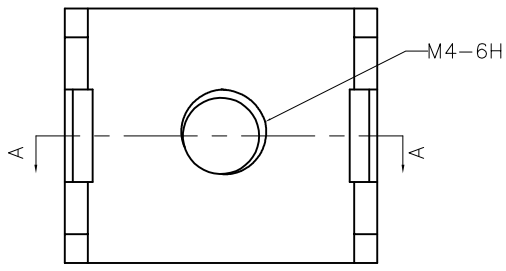


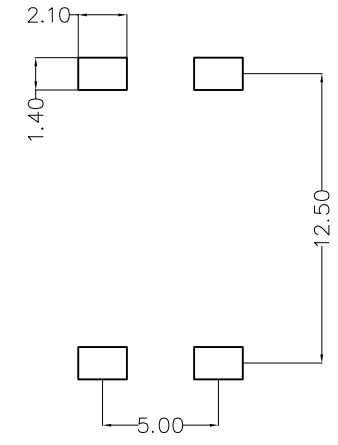
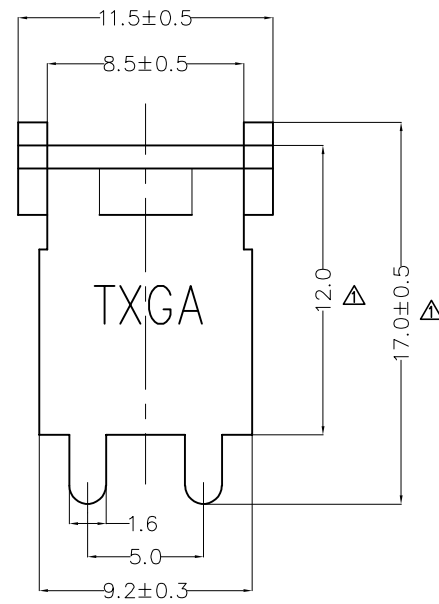
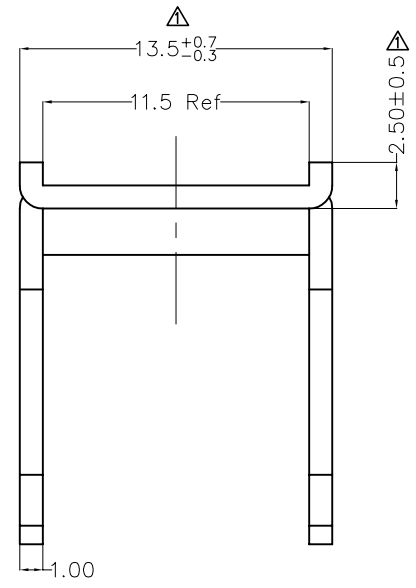
REV	LOCATIONS	DESCRIPTION	DATE	REVISER	APPD
1	△	New mold Update dimensions and tolerances	20/MAR/26	MATT	LEO

SPECIFICATIONS

Electrical  
 Current Rating: 60A Max AC(rms)/DC  
 Screw Torque: 13 lbf.in  
 Operating Temperature: -40°C~+120°C  
 Material And Plating  
 Feet: Brass/ Tin Plated  
 Shim: Steel/ Tin Plated



A-A



Recommended P.C.Board Layout  
Tolerance: ±0.05

<p>THIRD ANGLE PROJECTION</p>	GENERAL TOLERANCES (UNLESS SPECIFIED)		APPROVE BY FRANK	DATE 20/OCT/22	PART NO. FNT006-M040B	ITEM NO. FNT006	<p>Building Technology Cornerstone</p>	
	X.±0.30	X.±5°	CHECKED BY CHERRY	DATE 20/OCT/22	TITLE Nut-type Terminal (M4)			REV 1
	DESIGN UNITS (metric)	X.XX±0.20	.X'±2°	DRAWN BY YYQ	DATE 20/OCT/22	THIS DRAWING CONTAINS INFORMATION THAT IS PROPRIETARY TO TXGA INDUSTRIAL ELECTRONICS(S.Z)CO.,LTD AND SHOULD NOT BE USED WITHOUT WRITTEN PERMISSION		
	SCALE 5:1	SIZE A4	X.XX±0.15 X.XXX±0.10	.XX'±1° .XXX'±0.5°				