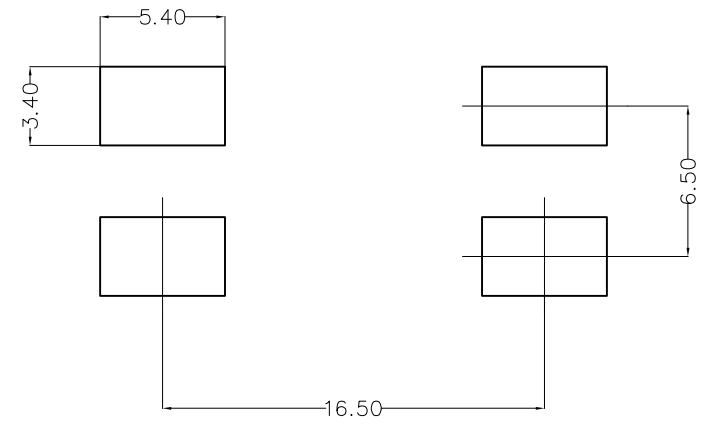
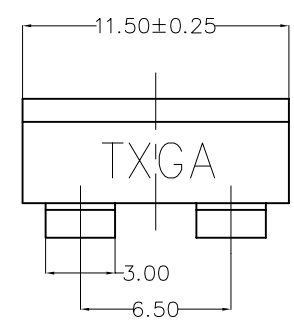
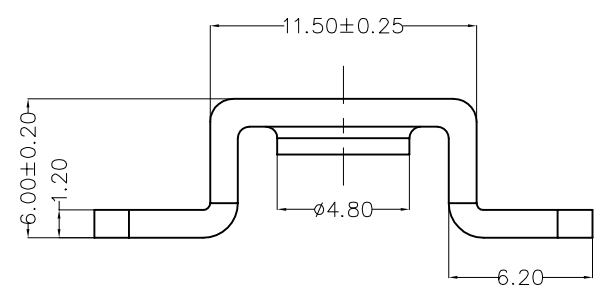
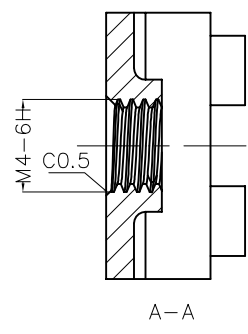
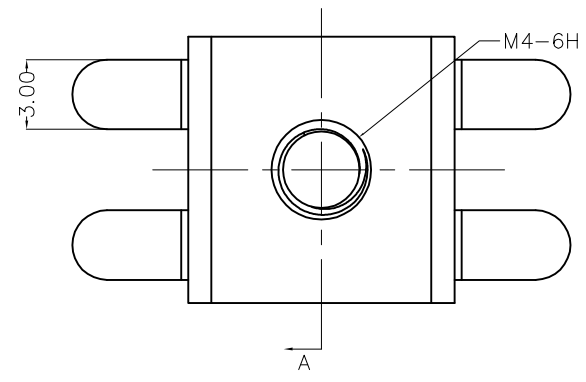


REV	LOCATIONS	DESCRIPTION	DATE	REVISER	APPD

SPECIFICATIONS

Electrical  
 Current Rating: 80A Max AC(rms)/DC  
 Screw Torque: 13 lbf.in  
 Operating Temperature: -40°C~+120°C  
 Material And Plating  
 Brass/Tin Plated



Recommended P.C.Board Layout

 THIRD ANGLE PROJECTION	GENERAL TOLERANCES (UNLESS SPECIFIED)		APPROVE BY LEO	DATE 30/JAN/23	PART NO. FNT009-M040B	ITEM NO. FNT009	 Building Technology Cornerstone	
	DESIGN UNITS METRIC	X. ±0.30 X.X ±0.20 X.XX ±0.15 X.XXX ±0.10	X.* ±5° X.X* ±2° X.XX* ±1° X.XXX* ±0.5°	CHECKED BY GISELLE	DATE 30/JAN/23	TITLE Nut-type Terminal (M4)		REV 0
SCALE 5:1	SIZE A4	DRAWN BY YYQ		DATE 30/JAN/23	THIS DRAWING CONTAINS INFORMATION THAT IS PROPRIETARY TO TXGA INDUSTRIAL ELECTRONICS(S.Z)CO.,LTD AND SHOULD NOT BE USED WITHOUT WRITTEN PERMISSION			