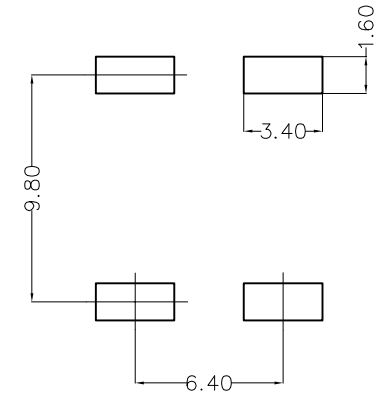
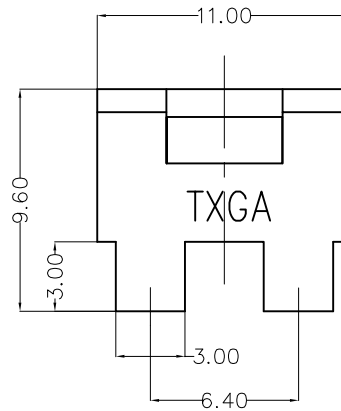
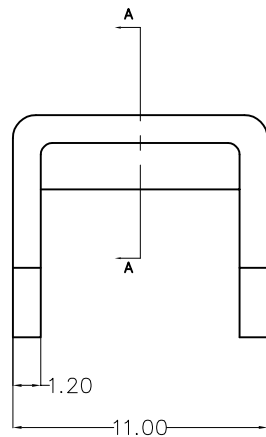
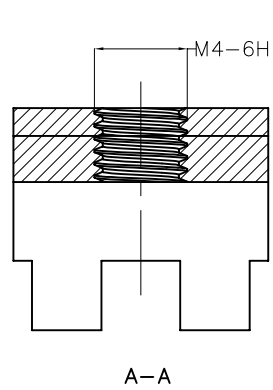
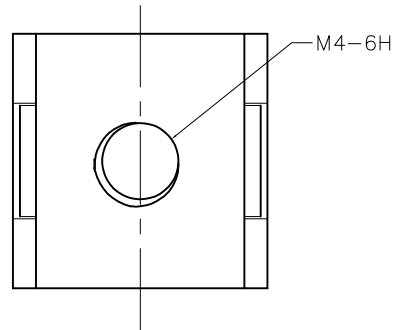


REV	LOCATIONS	DESCRIPTION	DATE	REVISER	APPD

SPECIFICATIONS

Electrical
 Current Rating: 80A Max AC(rms)/DC
 Screw Torque: 13 lbf.in
 Operating Temperature: -40°C~+120°C
 Material And Plating
 Brass/Tin Plated



Recommended P.C.Board Layout
 Tolerance: ±0.05

 THIRD ANGLE PROJECTION	GENERAL TOLERANCES (UNLESS SPECIFIED)		APPROVE BY FRANK	DATE 20/OCT/22	PART NO. FNT010-M040B	ITEM NO. FNT010	 Leader Of Industry	
	X.±0.30	X.±5°	CHECKED BY CHERRY	DATE 20/OCT/22	TITLE Nut-type Terminal (M4)			REV 0
	DESIGN UNITS (metric)	X.X±0.20	.X'±2°	DRAWN BY YYQ	DATE 20/OCT/22	THIS DRAWING CONTAINS INFORMATION THAT IS PROPRIETARY TO TXGA INDUSTRIAL ELECTRONICS(S.Z)CO.,LTD AND SHOULD NOT BE USED WITHOUT WRITTEN PERMISSION		
	SCALE 5:1	SIZE A4	X.XX±0.15	.XX'±1°	X.XXX±0.10	.XXX'±0.5°		