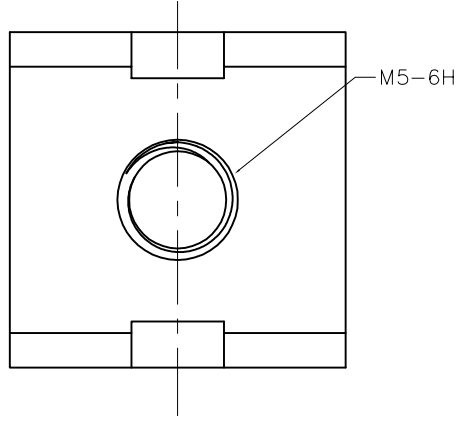
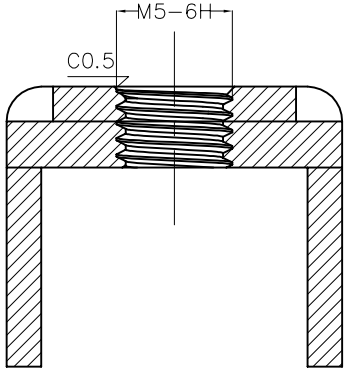


REV	LOCATIONS	DESCRIPTION	DATE	REVISER	APPD

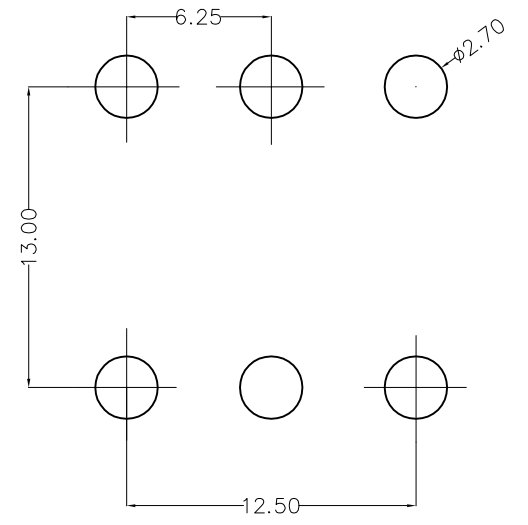
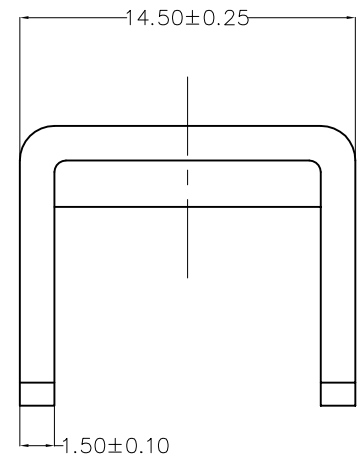
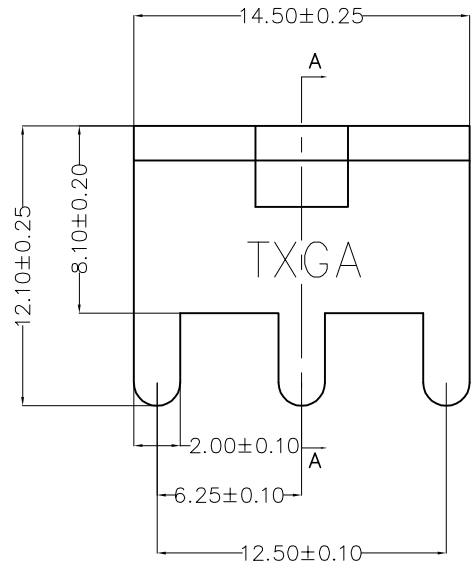


SPECIFICATIONS

Electrical  
 Current Rating: 50A Max AC(rms)/DC  
 Screw Torque: 7 lbf.in  
 Operating Temperature: -40°C~+120°C  
 Material And Plating  
 Feet: Brass/Tin Plated  
 Shim: stainless steel/Tin Plated



A-A



Recommended P.C.Board Layout

 THIRD ANGLE PROJECTION  DESIGN UNITS METRIC  SCALE 5:1  SIZE A4	GENERAL TOLERANCES (UNLESS SPECIFIED)		APPROVE BY LEO	DATE 30/JAN/23	PART NO. FNT012-M050B	ITEM NO. FNT012	 Building Technology Cornerstone
	X. ±0.30	X.* ±5°	CHECKED BY GISELLE	DATE 30/JAN/23	TITLE Nut-type Terminal (M5)		
	X.X ±0.20	X.X* ±2°	DRAWN BY YYQ	DATE 30/JAN/23	THIS DRAWING CONTAINS INFORMATION THAT IS PROPRIETARY TO TXGA INDUSTRIAL ELECTRONICS(S.Z)CO.,LTD AND SHOULD NOT BE USED WITHOUT WRITTEN PERMISSION		SHEET NO. 1/1
	X.XX ±0.15	X.XX* ±1°					
	X.XXX ±0.10	X.XXX* ±0.5°					