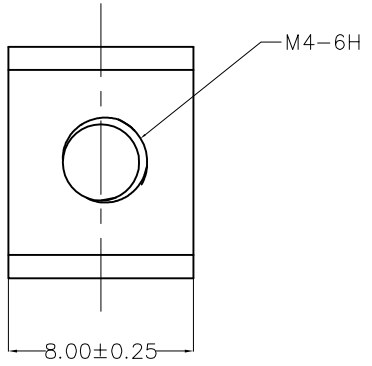
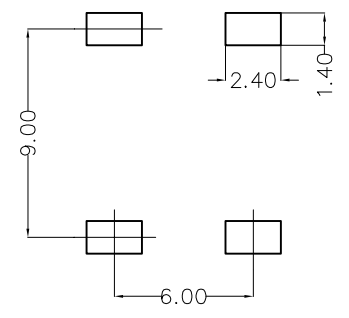
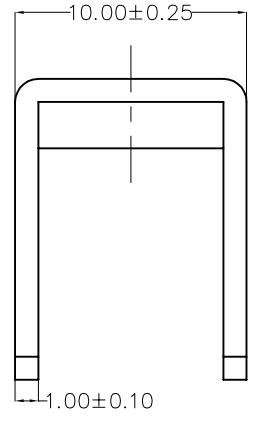
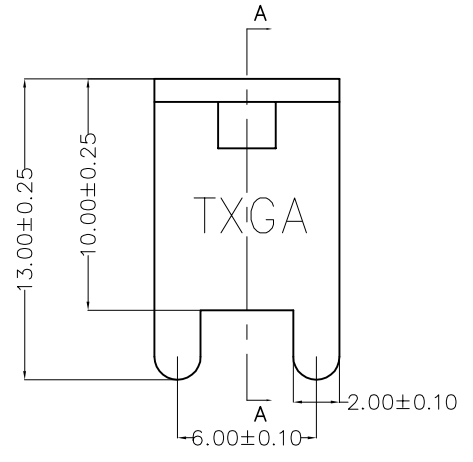
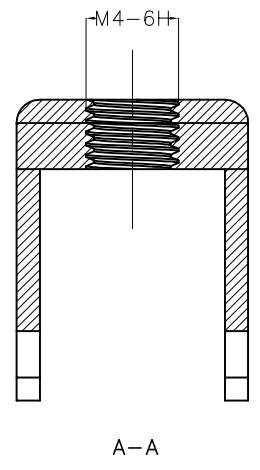


REV	LOCATIONS	DESCRIPTION	DATE	REVISER	APPD



**SPECIFICATIONS**

Electrical  
 Current Rating: 60A Max AC(rms)/DC  
 Screw Torque: 13 lbf.in  
 Operating Temperature: -40°C~+120°C  
 Material And Plating  
 Feet: Brass/Tin Plated  
 Shim: stainless steel/Tin Plated



Recommended P.C.Board Layout

<p>THIRD ANGLE PROJECTION</p>	GENERAL TOLERANCES (UNLESS SPECIFIED)		APPROVE BY	DATE	PART NO.	ITEM NO.	<p>Building Technology Cornerstone</p>	
	X. ±0.30	X.* ±5°	LEO	30/JAN/23	FNT013-M040B	FNT013		
	DESIGN UNITS	X.X ±0.20	X.X* ±2°	CHECKED BY	DATE	TITLE		REV 0
	METRIC	X.XX ±0.15	X.XX* ±1°	GISELLE	30/JAN/23	Nut-type Terminal (M4)		SHEET NO. 1/1
SCALE	SIZE	X.XXX ±0.10	X.XXX* ±0.5°	DRAWN BY	DATE	THIS DRAWING CONTAINS INFORMATION THAT IS PROPRIETARY TO TXGA INDUSTRIAL ELECTRONICS(S.Z)CO.,LTD AND SHOULD NOT BE USED WITHOUT WRITTEN PERMISSION		
5:1	A4			YYQ	30/JAN/23			