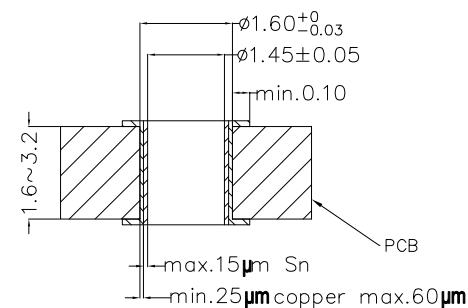
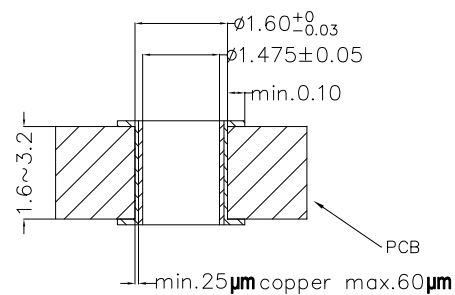
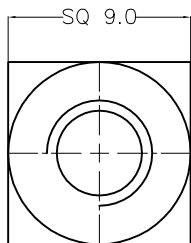
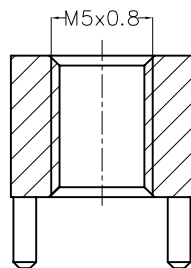
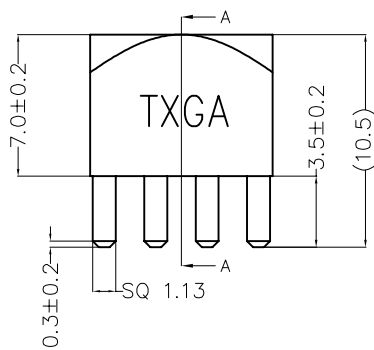


| REV | LOCATIONS | DESCRIPTION | DATE | REVISER | APPD |
|-----|-----------|-------------|------|---------|------|
|     |           |             |      |         |      |

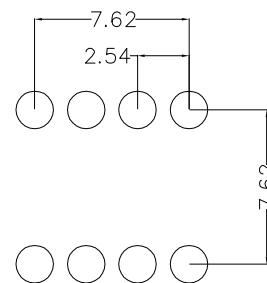


Drill hole specification for chemical surfaces

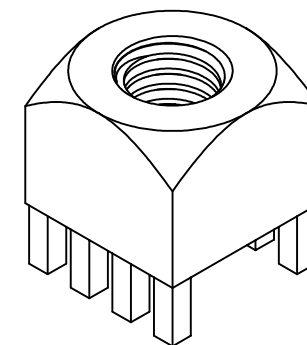
Drill hole specification for HAL



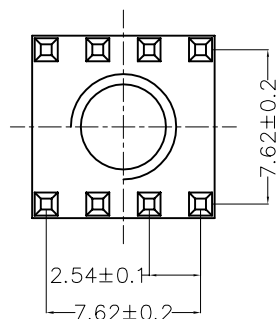
Section A-A



Recommended P.C.Board Layout  
Tolerance: ±0.05



3D View



**SPECIFICATIONS**

1. Material: Brass (C3604)
  2. Plating: 3~5 μm Bright tin plated over 2~2.5 μm nickel
  3. Current Rating: 160A Max
  4. Screw Torque: 2.5 Nm
  5. Operating Temperature: -40°C~+120°C
- \* All materials meet the "RoHs"

|                               |                                       |             |              |           |                                     |  |  |
|-------------------------------|---------------------------------------|-------------|--------------|-----------|-------------------------------------|--|--|
| <p>THIRD ANGLE PROJECTION</p> | GENERAL TOLERANCES (UNLESS SPECIFIED) |             | APPROVE BY   | DATE      | PART NO.                            | ITEM NO.   | <p>Building Technology Cornerstone</p> |
|                               | X. ±0.30                              | X.* ±5°     | LEO          | 10/OCT/23 | FNT023-M050B                        | FNT023   |  |
|                               | X.X ±0.20                             | X.X* ±2°    | CHECKED BY   | DATE      | TITLE                               |  | REV 0                                  |
|                               | X.XX ±0.15                            | X.XX* ±1°   | GISELLE      | 10/OCT/23 | Nut-type Terminal (M5)<br>Press fit |  | SHEET NO. 1/1                          |
| SCALE                         | SIZE                                  | X.XXX ±0.10 | X.XXX* ±0.5° | DRAWN BY  | DATE                                | THIS DRAWING CONTAINS INFORMATION THAT IS PROPRIETARY TO TXGA INDUSTRIAL ELECTRONICS(S.Z)CO.,LTD AND SHOULD NOT BE USED WITHOUT WRITTEN PERMISSION |  |
| 5:1                           | A4                                    |             |              | MATT      | 10/OCT/23                           |  |  |