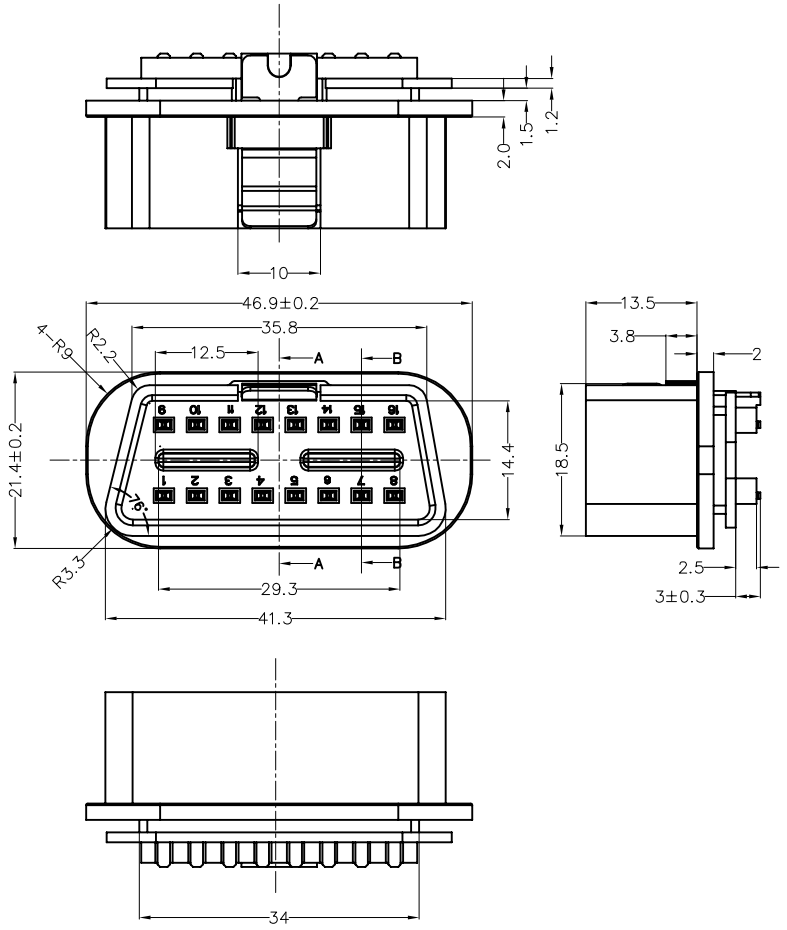


REV	LOCATIONS	DESCRIPTION	DATE	REVISER	APPD

SPECIFICATIONS

Electrical
 Current Rating: 5.0A AC(rms)/DC
 Voltage Rating: 220V AC(rms)/DC
 Contact Resistance: 10 mΩ Max
 Insulation Resistance: 1000 MΩ Min
 Withstanding Voltage: 1500V AC r.m.s
 Temperature Range-Operating: -40°C~+85°C

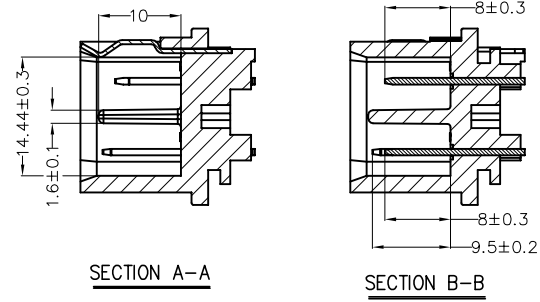
Material
 Housing: PC+30%ABS (UL 94V-0)
 Contacts: Phosphor Bronze / Tin plated
 over Nickle plated
 Latch: Stainless steel/Wash treatment




Ordering Information

FOBD 10 — P 16 XX 2 K — 000
 1 2 3 4 5 6 7

1	Category	2	Distinction Number	3	Type.	4	Circuits	5	Color-Resin	6	Plating	7	Packaging
	FOBD-OBD Conn.		10		P-Plug		16		RD-Red BK-Black		2-Tin Plated		K-Tray



THIRD ANGLE PROJECTION	GENERAL TOLERANCES (UNLESS SPECIFIED)		APPROVE BY	DATE	PART NO.	ITEM NO.	 Leader Of Industry
	X.±0.30	X.±5'	FRANK	15/SEP/21	FOBD10-P16XX2K-000	FOBD10	
DESIGN UNITS Metric	X.X±0.20	.X'±2'	CHECKED BY	DATE	TITLE		REV 0
SCALE 1:1	X.XX±0.15	.XX'±1'	CHERRY	15/SEP/21	OBD 16PIN CONN.		SHEET NO. 1/1
SIZE A4	X.XXX±0.10	.XXX'±0.5'	DRAWN BY	DATE	THIS DRAWING CONTAINS INFORMATION THAT IS PROPRIETARY TO TXGA INDUSTRIAL ELECTRONICS(S.Z)CO.,LTD AND SHOULD NOT BE USED WITHOUT WRITTEN PERMISSION		
			DANIEL	15/SEP/21			