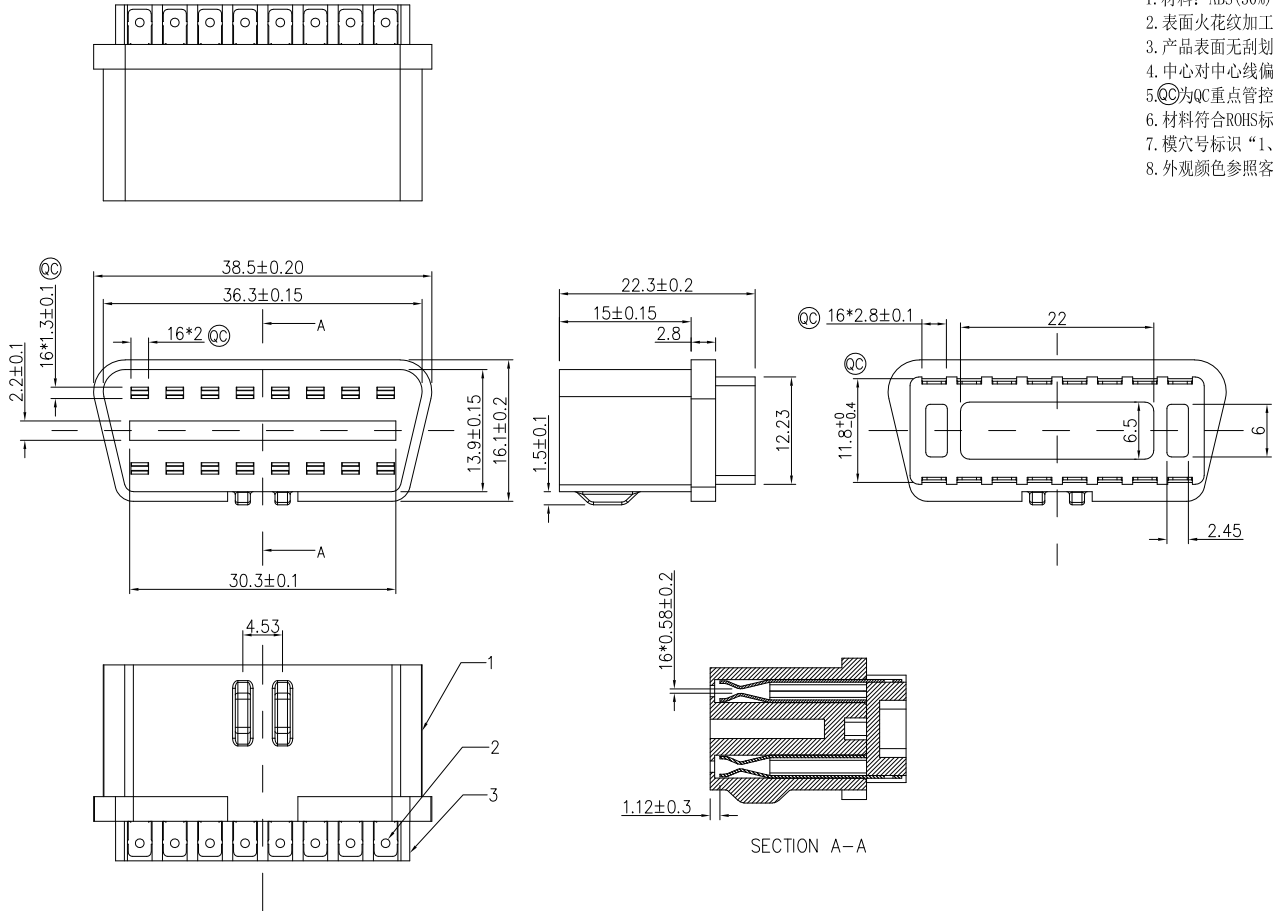


REV	LOCATIONS	DESCRIPTION	DATE	REVISER	APPD
0		New Release	1/APR/24	0	FRANK

- 注:
1. 材料: ABS(30%)+PC(70%), 颜色: 黑色, 端子镀锡。
 2. 表面火花纹加工。
 3. 产品表面无刮伤、明显缩水、发白、批锋、顶高, 水口残留、色差等不良。
 4. 中心对中心线偏差0.05mm, 未注尺寸公差±0.10, 其它未注特征参照3D图纸
 5. (C)为QC重点管控尺寸, (O)为参考尺寸
 6. 材料符合ROHS标准
 7. 模穴号标识“1、2、3、4”
 8. 外观颜色参照客户样品或研发封样品。



3	OBD Stopper	1PC
2	female terminal	16PCS
1	OBD16pin female housing	1PC
NO.	SPECIFICATION	NOTE

 THIRD ANGLE PROJECTION	GENERAL TOLERANCES (UNLESS SPECIFIED)		APPROVE BY FRANK	DATE 1/APR/24	PART NO. FOBD21-P16BK2K-000	ITEM NO. OBD21	 Building Technology Cornerstone
	X.±.012(0.30)	X.±5°	CHECKED BY CHERRY	DATE 1/APR/24	TITLE OBD 黑色主体+端子镀锡		
	X.X±.008(0.20)	.X'±2'	DRAWN BY DANIEL	DATE 1/APR/24	THIS DRAWING CONTAINS INFORMATION THAT IS PROPRIETARY TO TXGA INDUSTRIAL ELECTRONICS(S.Z)CO.,LTD AND SHOULD NOT BE USED WITHOUT WRITTEN PERMISSION		
	X.XX±.006(0.15)	.XX'±1'			REV 0	SHEET NO. 1/1	
SCALE 1:1	SIZE A4	X.XXX±.004(0.10)	.XXX'±0.5°				