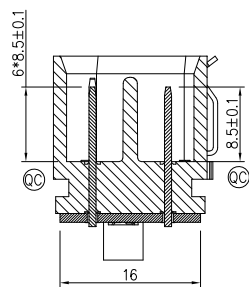
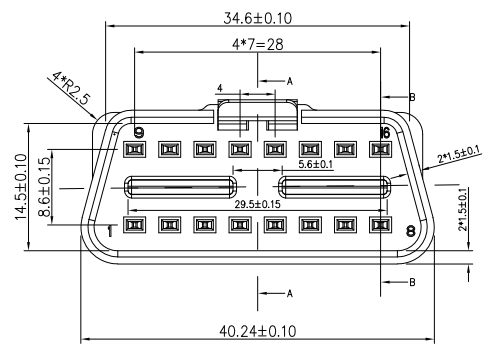
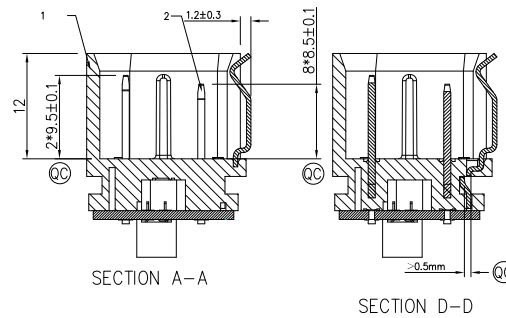
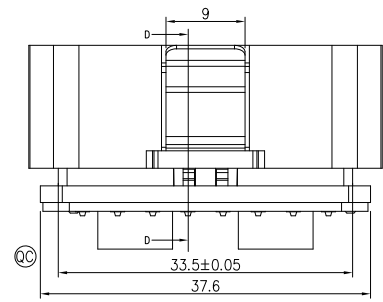
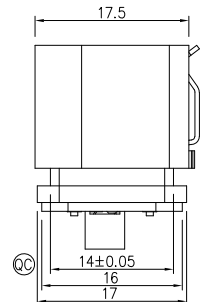
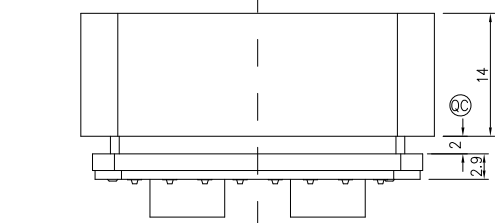


REV	LOCATIONS	DESCRIPTION	DATE	REVISER	APPD
0		New Release	26/FEB	FRANK	FRANK



SECTION B-B



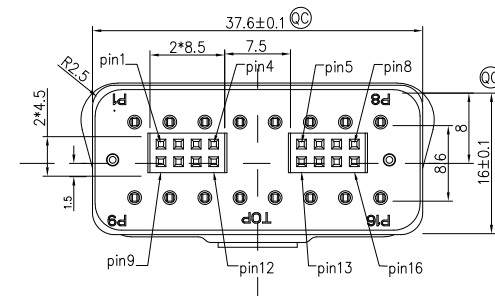
SECTION A-A

SECTION D-D

OBD PCB板回路图

OBD Pin No.	16 Pin No.
1	1
2	2
3	3
4、5	4、5
6	6
7	7
8	8
9	9
10	10
11	11
12	12
13	13
14	14
15	15
16	16

- 技术要求:
1. 表面处理及颜色按外观设计要求执行,参照研发封样件(黑色)。
 2. 表面不允许有流痕、烧焦、熔接痕、变色、局部顶白等缺陷,表面不得有划伤等痕迹。
 3. 未注脱模斜度为0.5°,未注尺寸见3D图,未注尺寸公差请按GB-T_14486-2008
 4. 要求材料通过高低温测试(-20°C~+70°C),阻燃等级要求UL94V-0
端子材质:黄铜,火花纹面,表面镀锡,接头组件能通过48小时盐雾测试
 5. 与上下盖装配,要求精密配合
 6. 端子焊接浮高≤0.12mm,焊点圆滑饱满、不可连锡、拉尖、虚假焊等不良。
 7. 要求材料和工艺要求符合ROHS标准。
 8. QC为QC重点管控尺寸,()为参考尺寸,未注尺寸公差±0.10。
 9. 排母接触阻抗≤15mΩ,产品过电流2A最大。



Ordering Information

OBD 24 - M 16 XX X K - 001
 1 2 3 4 5 6 7 8

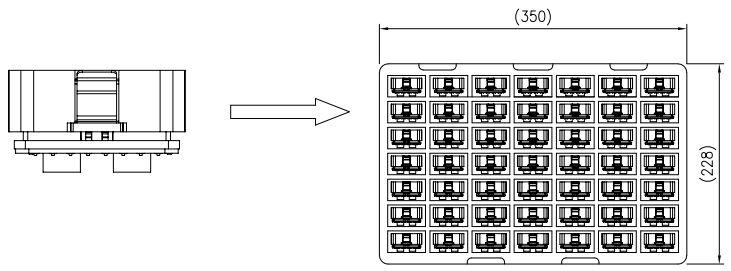
1 Series Name FOBD-OBD Conn	2 Distinction No. 24	3 Type M-Male	4 Circuits 16-16 Circuits
5 Housing Color TB-black	6 Plating 2-Plating Tin 3-Half Gold/Tin	7 Packaging K-Tray	8 Version number 001

* Note: All Materials Meet The "RoHs" !

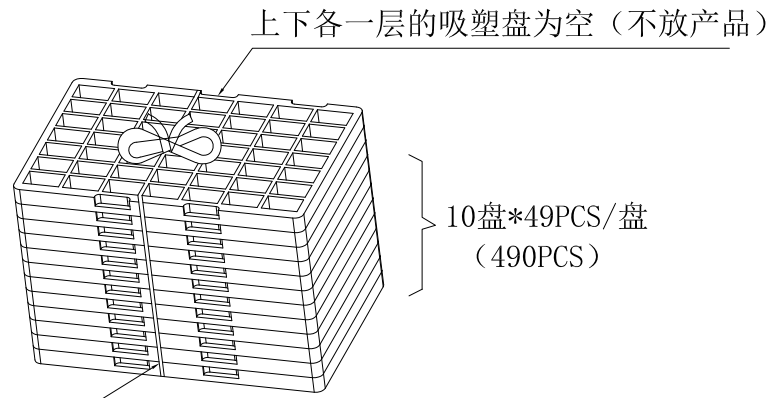
5	20PIN Connector	FH20001-D08S1004K6K-B		2PCS
4	PCB	OBD22-PDB-000	FR4	1PC
3	Latch	OBD22-LOB-000	SUS301-1/2H	1PC
2	16PIN Terminal	OBD24-M12H-000/OBD24-M32H-000	C2680-H	2Set
1	OBD Housing	OBD24-HBKK-001	PC	1PC
NO.	SPECIFICATION	DESCRIPTION	NOTE	Q'TY

<p>THIRD ANGLE PROJECTION</p>	GENERAL TOLERANCES (UNLESS SPECIFIED)		APPROVE BY FRANK	DATE 26/FEB/24	PART NO. FOBD24-M16BK2K-001	ITEM NO. FOBD24	<p>Building Technology Cornerstone</p>	
	DESIGN UNITS Metric	X.±0.12(0.30)	X'.±5'	CHECKED BY CHERRY	DATE 26/FEB/24	TITLE OBD Connector Pitch 4.0mm To FH20001 Connector		REV 0
	SCALE 1:1	X.XX±.006(0.15)	.XX'±1'	DRAWN BY DANIEL	DATE 26/FEB/24	THIS DRAWING CONTAINS INFORMATION THAT IS PROPRIETARY TO TXGA INDUSTRIAL ELECTRONICS(S.Z)CO.,LTD AND SHOULD NOT BE USED WITHOUT WRITTEN PERMISSION		
	SIZE A4	X.XXX±.004(0.10)	.XXX'±0.5'					

REV	LOCATIONS	DESCRIPTION	DATE	REVISER	APPD
0		New Release	26/FEB		FRANK



如图所示，将产品放入吸塑盘内，49PCS/盘



10盘*49PCS/盘
(490PCS)

PE膜

12盘/叠（上下层的吸塑盘不放产品）

Ordering Information

1	2	3	4	5	6	7	8
Series Name	Distinction No.	Type	Circuits	Housing Color	Plating	Packaging	Version number
FOBD-OBD Conn	24	M-Male	16-16 Circuits	BK-black	2-Plating Tin 3-Half Gold/Tin	K-Tray	001

<p>THIRD ANGLE PROJECTION</p>	GENERAL TOLERANCES (UNLESS SPECIFIED)		APPROVE BY	DATE	PART NO.	ITEM NO.	<p>Building Technology Cornerstone</p>
	X.±.012(0.30)	X.±5'	FRANK	26/FEB/24	FOBD24-M16BK2K-001	FOBD24	
	DESIGN UNITS Metric		CHECKED BY	DATE	TITLE		THIS DRAWING CONTAINS INFORMATION THAT IS PROPRIETARY TO TXGA INDUSTRIAL ELECTRONICS(S,Z)CO.,LTD AND SHOULD NOT BE USED WITHOUT WRITTEN PERMISSION
	X.X±.008(0.20)	.X'±2'	CHERRY	26/FEB/24	OBD Connector Pitch 4.0mm To FH20001 Connector		
SCALE	SIZE	DRAWN BY		DATE	REV 0		SHEET NO. 2/2
1:1	A4	DANIEL		26/FEB/24			