

1 2 3 4 5 6 7 8

REV	LOCATIONS	DESCRIPTION	DATE	REVISER	APPD

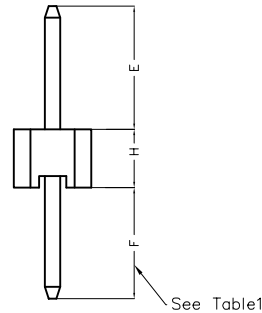
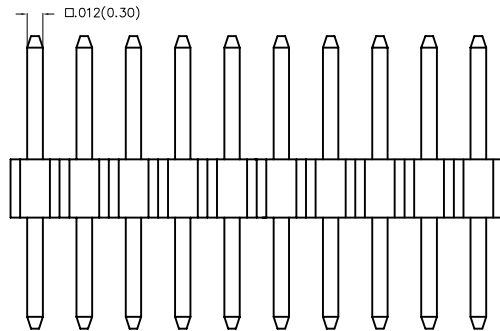
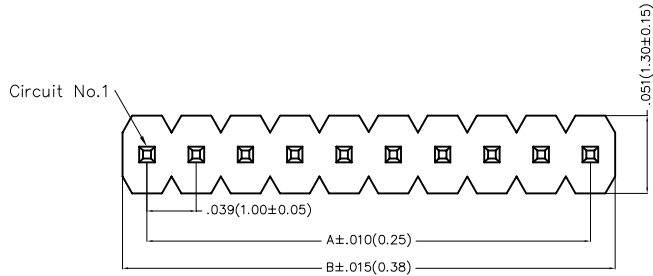
SPECIFICATIONS

Electrical

Current Rating: 1.0A AC(rms)/DC
 Voltage Rating: 250V AC(rms)/DC
 Contact Resistance: 20 m Max
 Insulation Resistance: 1000 M MIN
 Withstanding Voltage: 300V AC r.m.s
 Temperature Range—Operating: -40°C~+105°C

Material and Plating

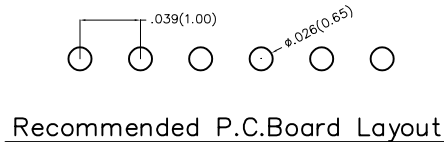
Housing: Glass Filled Polyester (UL 94V-0), Color: Black
 Pin: Brass
 Pin Plating: Gold plated/ Selective gold in contact area, bright tin on tail



Ordering Information

FPH 100 02 - S XX S X XX X XX B
 1 2 3 4 5 6 7 8 9 10 11

1	Category FPH—Pin Header	2	Series Number 100—Pitch 1.00mm	3	Distinction No. 02	4	Row Option S—Single Row	5	Circuits XX	6	Entry Angle S—180° Vertical
7	Plating 1—Gold plated 3—Selective gold in contact area, bright tin on tail	8	Thickness of Plating 01—1μ" 15—15μ" Custom plate available	9	Material—Resin 3—LCP 4—PA6T 5—PA9T	10	Size 01,02... —Serial number (See Table1) Custom length available	11	Packaging B—PE Bag		



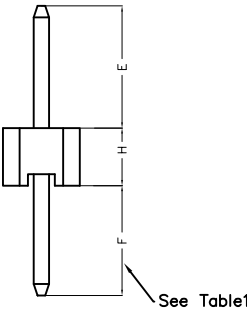
<p>THIRD ANGLE PROJECTION</p>	GENERAL TOLERANCES (UNLESS SPECIFIED)		APPROVE BY FRANK	DATE 25/JUN/13	PART NO. FPH10002—SXXSXXXXXXB	ITEM NO. FPH10002	<p>Leader Of Industry</p>	
	DESIGN UNITS Inch (metric)	X.±.012(0.30) X.X±.008(0.20) X.XX±.006(0.15) X.XXX±.004(0.10)	X.'±5' .X'±2' .XX'±1' .XXX'±0.5'	CHECKED BY CHERRY	DATE 25/JUN/13	TITLE Board to Board(Pin Header) Pitch 1.00mm 180° Vertical(DIP)		REV 0
SCALE 5:1	SIZE A4	DRAWN BY JACOB		DATE 25/JUN/13	THIS DRAWING CONTAINS INFORMATION THAT IS PROPRIETARY TO TXGA INDUSTRIAL ELECTRONICS(S.Z)CO.,LTD AND SHOULD NOT BE USED WITHOUT WRITTEN PERMISSION			

1 2 3 4 5 6 7 8

REV	LOCATIONS	DESCRIPTION	DATE	REVISED	APPD

Table1

Serial number	Dimensions(in/mm)			Canceled Circuits	Note
	E	F	H		
01	.433(11.00)	.118(3.00)	.039(1.00)	—	
02	.071(1.80)	.118(3.00)	.039(1.00)	—	
03	.295(7.50)	.098(2.50)	.039(1.00)	—	
04	.071(1.80)	.079(2.00)	.059(1.50)	—	
05	.071(1.80)	.079(2.00)	.059(1.50)	No.2,3,4,5,6,7	Only 8Circuits
06	.071(1.80)	.071(1.80)	.079(2.00)	—	
07	.071(1.80)	.083(2.10)	.039(1.00)	—	
08	.157(4.00)	.083(2.10)	.039(1.00)	—	
09	.079(2.00)	.079(2.00)	.079(2.00)	—	
10	.220(5.60)	.083(2.10)	.039(1.00)	—	
11	.232(5.90)	.083(2.10)	.039(1.00)	—	



<p>THIRD ANGLE PROJECTION</p>	GENERAL TOLERANCES (UNLESS SPECIFIED)		APPROVE BY	DATE	PART NO.	ITEM NO.	<p>Leader Of Industry</p>	
	X.±.012(0.30)	X.±5'	FRANK	25/JUN/13	FPH10002-SXXSXXXXXXB	FPH10002		
	X.X±.008(0.20)	.X'±2'	CHECKED BY	DATE	TITLE		REV 0	SHEET NO. 2/3
	X.XX±.006(0.15)	.XX'±1'	CHERRY	25/JUN/13	Board to Board(Pin Header) Pitch 1.00mm 180° Vertical(DIP)			
SCALE	SIZE	X.XXX±.004(0.10)	.XXX'±0.5'	DRAWN BY	DATE	THIS DRAWING CONTAINS INFORMATION THAT IS PROPRIETARY TO TXGA INDUSTRIAL ELECTRONICS(S.Z)CO.,LTD AND SHOULD NOT BE USED WITHOUT WRITTEN PERMISSION		
5:1	A4			JACOB	25/JUN/13			

1 2 3 4 5 6 7 8

REV	LOCATIONS	DESCRIPTION	DATE	REVISER	APPD

A

A

B

B

C

C

D

D

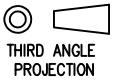

E

E

F

F

Circuits (n)	Part No.	Dimensions(in/mm)		Circuits (n)	Part No.	Dimensions(in/mm)	
		A	B			A	B
1	FPH10002-S01SXXXXXXB	—	.039(1.00)	21	FPH10002-S21SXXXXXXB	.787(20.00)	.827(21.00)
2	FPH10002-S02SXXXXXXB	.039(1.00)	.079(2.00)	22	FPH10002-S22SXXXXXXB	.827(21.00)	.866(22.00)
3	FPH10002-S03SXXXXXXB	.079(2.00)	.118(3.00)	23	FPH10002-S23SXXXXXXB	.866(22.00)	.906(23.00)
4	FPH10002-S04SXXXXXXB	.118(3.00)	.157(4.00)	24	FPH10002-S24SXXXXXXB	.906(23.00)	.945(24.00)
5	FPH10002-S05SXXXXXXB	.157(4.00)	.197(5.00)	25	FPH10002-S25SXXXXXXB	.945(24.00)	.984(25.00)
6	FPH10002-S06SXXXXXXB	.197(5.00)	.236(6.00)	26	FPH10002-S26SXXXXXXB	.984(25.00)	1.024(26.00)
7	FPH10002-S07SXXXXXXB	.236(6.00)	.276(7.00)	27	FPH10002-S27SXXXXXXB	1.024(26.00)	1.063(27.00)
8	FPH10002-S08SXXXXXXB	.276(7.00)	.315(8.00)	28	FPH10002-S28SXXXXXXB	1.063(27.00)	1.102(28.00)
9	FPH10002-S09SXXXXXXB	.315(8.00)	.354(9.00)	29	FPH10002-S29SXXXXXXB	1.102(28.00)	1.142(29.00)
10	FPH10002-S10SXXXXXXB	.354(9.00)	.394(10.00)	30	FPH10002-S30SXXXXXXB	1.142(29.00)	1.181(30.00)
11	FPH10002-S11SXXXXXXB	.394(10.00)	.443(11.00)	31	FPH10002-S31SXXXXXXB	1.181(30.00)	1.220(31.00)
12	FPH10002-S12SXXXXXXB	.443(11.00)	.472(12.00)	32	FPH10002-S32SXXXXXXB	1.220(31.00)	1.260(32.00)
13	FPH10002-S13SXXXXXXB	.472(12.00)	.512(13.00)	33	FPH10002-S33SXXXXXXB	1.260(32.00)	1.130(33.00)
14	FPH10002-S14SXXXXXXB	.512(13.00)	.551(14.00)	34	FPH10002-S34SXXXXXXB	1.130(33.00)	1.339(34.00)
15	FPH10002-S15SXXXXXXB	.551(14.00)	.591(15.00)	35	FPH10002-S35SXXXXXXB	1.339(34.00)	1.379(35.00)
16	FPH10002-S16SXXXXXXB	.591(15.00)	.630(16.00)	36	FPH10002-S36SXXXXXXB	1.379(35.00)	1.417(36.00)
17	FPH10002-S17SXXXXXXB	.630(16.00)	.669(17.00)	37	FPH10002-S37SXXXXXXB	1.417(36.00)	1.457(37.00)
18	FPH10002-S18SXXXXXXB	.669(17.00)	.709(18.00)	38	FPH10002-S38SXXXXXXB	1.457(37.00)	1.497(38.00)
19	FPH10002-S19SXXXXXXB	.709(18.00)	.748(19.00)	39	FPH10002-S39SXXXXXXB	1.497(38.00)	1.535(39.00)
20	FPH10002-S20SXXXXXXB	.748(19.00)	.787(20.00)	40	FPH10002-S40SXXXXXXB	1.535(39.00)	1.575(40.00)

 THIRD ANGLE PROJECTION	GENERAL TOLERANCES (UNLESS SPECIFIED)		APPROVE BY	DATE	PART NO.	ITEM NO.	 Leader Of Industry		
	X.±.012(0.30)	X.±5'	FRANK	25/JUN/13	FPH10002-SXXSXXXXXXB	FPH10002			
	DESIGN UNITS Inch (metric)	X.X±.008(0.20)	X.±2'	CHECKED BY	DATE	TITLE		REV 0	SHEET NO. 3/3
	SCALE	X.XX±.006(0.15)	.XX±1'	CHERRY	25/JUN/13	Board to Board(Pin Header) Pitch 1.00mm 180° Vertical(DIP)			
5:1	X.XXX±.004(0.10)	.XXX±0.5'	DRAWN BY	DATE	THIS DRAWING CONTAINS INFORMATION THAT IS PROPRIETARY TO TXGA INDUSTRIAL ELECTRONICS(S.Z)CO.,LTD AND SHOULD NOT BE USED WITHOUT WRITTEN PERMISSION				
A4			JACOB	25/JUN/13					

1 2 3 4 5 6 7 8