

REV	LOCATIONS	DESCRIPTION	DATE	REVISER	APPD
1	△	Part No.: FPH10003-SXXBXXX4XXM1 change into FPH10003-SXXBXXX4XXW	13/APR/17	KATE	FRANK

SPECIFICATIONS

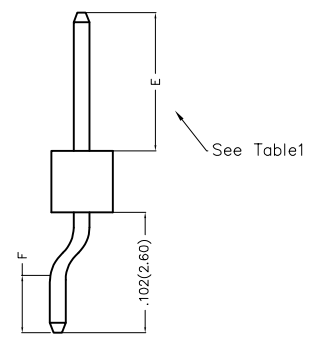
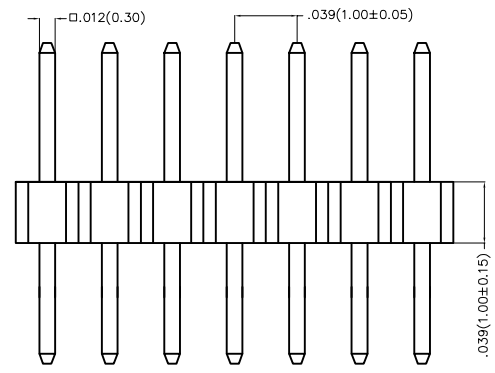
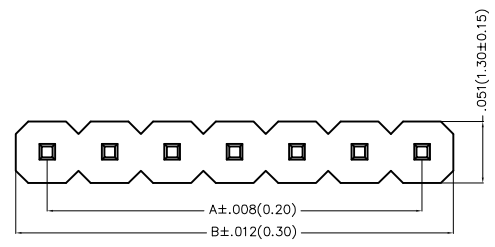
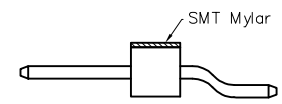
Electrical

Current Rating: 1.0A AC(rms)/DC
Voltage Rating: 250V AC(rms)/DC
Contact Resistance: 20 mΩ Max
Insulation Resistance: 1000 MΩ Min
Withstanding Voltage: 300V AC r.m.s
Temperature Range-Operating: -40°C~+105°C

Material

Housing: Glass Filled Polyester (UL 94V-0), Color: Black
Pin: Brass
Pin Plating: Gold plated/ Selective gold in contact area, tin on tail

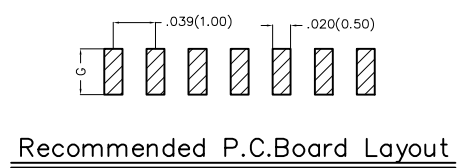
Packaging: W-Reel(With Mylar) △



Ordering Information

FPH 100 03 - S XX B X XX 4 XX X 11

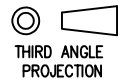

1	Category FPH-Pin Header	2	Series Number 100-Pitch1.00mm	3	Distinction No. 03	4	Row Option S-Single Row	5	Circuits XX	6	Entry Angle B-90° Angle
7	Plating 1-Gold plated 3-Selective gold in contact area, tin on tail	8	Thickness of Plating 01-1μ" 05-5μ" 15-15μ" Custom plate available	9	Material-Resin 4-PA6T	10	Size 01,02... -Serial number (See Table1) Custom length available	11	Packaging M-Reel W-Reel(With Mylar) △		



THIRD ANGLE PROJECTION	GENERAL TOLERANCES (UNLESS SPECIFIED)		APPROVE BY FRANK	DATE 25/JUN/13	PART NO. FPH10003-SXXBXXX4XX	ITEM NO. FPH10003	 Leader Of Industry
	DESIGN UNITS Inch (metric)	X.±.012(0.30) X.X±.008(0.20) X.XX±.006(0.15) X.XXX±.004(0.10)	X.±5' .X'±2' .XX'±1' .XXX'±0.5'	CHECKED BY CHERRY	DATE 25/JUN/13	TITLE Board to Board(Pin Header) Pitch 1.00mm 90° Angle(SMT)	
SCALE 5:1	SIZE A4		DRAWN BY JACOB	DATE 25/JUN/13	THIS DRAWING CONTAINS INFORMATION THAT IS PROPRIETARY TO TXGA INDUSTRIAL ELECTRONICS(S.Z)CO.,LTD AND SHOULD NOT BE USED WITHOUT WRITTEN PERMISSION		REV 1 SHEET NO. 1/3

REV	LOCATIONS	DESCRIPTION	DATE	REVISER	APPD

Circuits (n)	Part No.	Dimensions(in/mm)		Circuits (n)	Part No.	Dimensions(in/mm)	
		A	B			A	B
1	FPH10003-S01BXXX4XXX	—	.039(1.00)	21	FPH10003-S21BXXX4XXX	.787(20.00)	.827(21.00)
2	FPH10003-S02BXXX4XXX	.039(1.00)	.079(2.00)	22	FPH10003-S22BXXX4XXX	.827(21.00)	.866(22.00)
3	FPH10003-S03BXXX4XXX	.079(2.00)	.118(3.00)	23	FPH10003-S23BXXX4XXX	.866(22.00)	.906(23.00)
4	FPH10003-S04BXXX4XXX	.118(3.00)	.157(4.00)	24	FPH10003-S24BXXX4XXX	.906(23.00)	.945(24.00)
5	FPH10003-S05BXXX4XXX	.157(4.00)	.197(5.00)	25	FPH10003-S25BXXX4XXX	.945(24.00)	.984(25.00)
6	FPH10003-S06BXXX4XXX	.197(5.00)	.236(6.00)	26	FPH10003-S26BXXX4XXX	.984(25.00)	1.024(26.00)
7	FPH10003-S07BXXX4XXX	.236(6.00)	.276(7.00)	27	FPH10003-S27BXXX4XXX	1.024(26.00)	1.063(27.00)
8	FPH10003-S08BXXX4XXX	.276(7.00)	.315(8.00)	28	FPH10003-S28BXXX4XXX	1.063(27.00)	1.102(28.00)
9	FPH10003-S09BXXX4XXX	.315(8.00)	.354(9.00)	29	FPH10003-S29BXXX4XXX	1.102(28.00)	1.142(29.00)
10	FPH10003-S10BXXX4XXX	.354(9.00)	.394(10.00)	30	FPH10003-S30BXXX4XXX	1.142(29.00)	1.181(30.00)
11	FPH10003-S11BXXX4XXX	.394(10.00)	.443(11.00)	31	FPH10003-S31BXXX4XXX	1.181(30.00)	1.220(31.00)
12	FPH10003-S12BXXX4XXX	.443(11.00)	.472(12.00)	32	FPH10003-S32BXXX4XXX	1.220(31.00)	1.260(32.00)
13	FPH10003-S13BXXX4XXX	.472(12.00)	.512(13.00)	33	FPH10003-S33BXXX4XXX	1.260(32.00)	1.130(33.00)
14	FPH10003-S14BXXX4XXX	.512(13.00)	.551(14.00)	34	FPH10003-S34BXXX4XXX	1.130(33.00)	1.339(34.00)
15	FPH10003-S15BXXX4XXX	.551(14.00)	.591(15.00)	35	FPH10003-S35BXXX4XXX	1.339(34.00)	1.379(35.00)
16	FPH10003-S16BXXX4XXX	.591(15.00)	.630(16.00)	36	FPH10003-S36BXXX4XXX	1.379(35.00)	1.417(36.00)
17	FPH10003-S17BXXX4XXX	.630(16.00)	.669(17.00)	37	FPH10003-S37BXXX4XXX	1.417(36.00)	1.457(37.00)
18	FPH10003-S18BXXX4XXX	.669(17.00)	.709(18.00)	38	FPH10003-S38BXXX4XXX	1.457(37.00)	1.497(38.00)
19	FPH10003-S19BXXX4XXX	.709(18.00)	.748(19.00)	39	FPH10003-S39BXXX4XXX	1.497(38.00)	1.535(39.00)
20	FPH10003-S20BXXX4XXX	.748(19.00)	.787(20.00)	40	FPH10003-S40BXXX4XXX	1.535(39.00)	1.575(40.00)

 THIRD ANGLE PROJECTION	GENERAL TOLERANCES (UNLESS SPECIFIED)		APPROVE BY FRANK	DATE 25/JUN/13	PART NO. FPH10003-SXXBXXX4XXX	ITEM NO. FPH10003	 Leader Of Industry		
	X.±.012(0.30)	X'.±5'	CHECKED BY CHERRY	DATE 25/JUN/13	TITLE Board to Board(Pin Header) Pitch 1.00mm 90° Angle(SMT)			REV 1	SHEET NO. 3/3
	DESIGN UNITS Inch (metric)	X.XX±.008(0.20)	X'±2'	DRAWN BY JACOB	DATE 25/JUN/13	THIS DRAWING CONTAINS INFORMATION THAT IS PROPRIETARY TO TXGA INDUSTRIAL ELECTRONICS(S.Z)CO.,LTD AND SHOULD NOT BE USED WITHOUT WRITTEN PERMISSION			
SCALE 5:1	SIZE A4	X.XX±.006(0.15)	X'±1'						
		X.XXX±.004(0.10)	X'±0.5'						