

REV	LOCATIONS	DESCRIPTION	DATE	REVISER	APPD

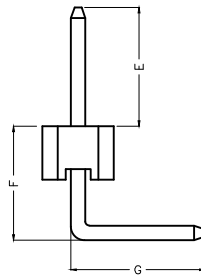
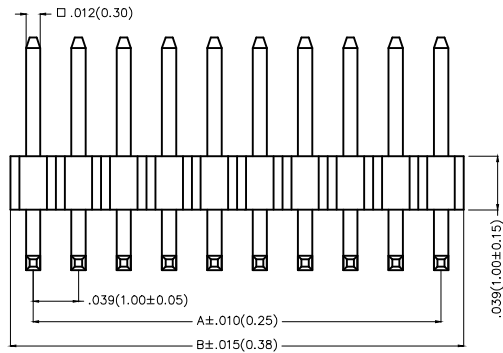
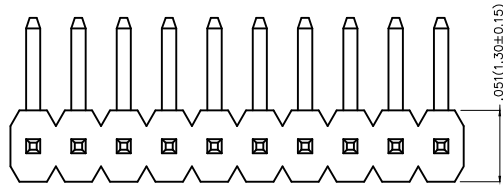
**SPECIFICATIONS**

**Electrical**

Current Rating: 1.0A AC(rms)/DC  
Voltage Rating: 250V AC(rms)/DC  
Contact Resistance: 20 mΩ Max  
Insulation Resistance: 1000 MΩ MIN  
Withstanding Voltage: 300V AC r.m.s  
Temperature Range—Operating: -40°C~+105°C

**Material**

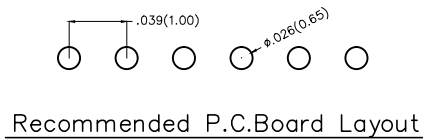
Housing: Glass Filled Polyester (UL 94V-0), Color: Black  
Pin: Brass  
Pin Plating: Gold plated/ Selective gold in contact area, bright tin on tail




**Ordering Information**

FPH 100 07 — S XX B X XX 4 XX B  
1 2 3 4 5 6 7 8 9 10 11

1 <u>Category</u> FPH—Pin Header	2 <u>Series Number</u> 100—Pitch1.00mm	3 <u>Distinction No.</u> 07	4 <u>Row Option</u> S—Single Row	5 <u>Circuits</u> XX	6 <u>Entry Angle</u> B—90° Angle
7 <u>Plating</u> 1—Gold plated 3—Selective gold in contact area, bright tin on tail	8 <u>Thickness of Plating</u> 01—1μ" 15—15μ" Custom plate available	9 <u>Material—Resin</u> 4—PA6T	10 <u>Size</u> 01,02... —Serial number (See Table1) Custom length available	11 <u>Packaging</u> B—PE Bag	

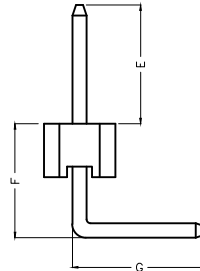


THIRD ANGLE PROJECTION	GENERAL TOLERANCES (UNLESS SPECIFIED)		APPROVE BY FRANK	DATE 31/MAY/16	PART NO. FPH10007—SXXBXXX4XXB	ITEM NO. FPH10007	 Leader Of Industry	
	DESIGN UNITS Inch (metric)	X.X±.012(0.30) X.XX±.008(0.20) X.XX±.006(0.15) X.XXX±.004(0.10)	X'±5" .X'±2" .XX'±1" .XXX'±0.5'	CHECKED BY CHERRY	DATE 31/MAY/16	TITLE Board to Board(Pin Header) Pitch 1.00mm 90° Angle(DIP)		REV 0
SCALE 5:1	SIZE A4	DRAWN BY KATE		DATE 31/MAY/16	THIS DRAWING CONTAINS INFORMATION THAT IS PROPRIETARY TO TXGA INDUSTRIAL ELECTRONICS(S.Z)CO.,LTD AND SHOULD NOT BE USED WITHOUT WRITTEN PERMISSION			

REV	LOCATIONS	DESCRIPTION	DATE	REVISER	APPD

Table1



Serial number	Dimensions(in/mm)			Canceled Circuits	Note
	E	F	G		
01	.098(2.50)	.118(3.00)	.118(3.00)	—	
02	.098(2.50)	.118(3.00)	.130(3.30)	—	
03	.051(1.30)	.110(2.80)	.134(3.40)	—	
04	.071(1.80)	.083(2.10)	.130(3.30)	—	
05	.079(2.00)	.083(2.10)	.114(2.90)	—	



 THIRD ANGLE PROJECTION	GENERAL TOLERANCES (UNLESS SPECIFIED)		APPROVE BY FRANK	DATE 31/MAY/16	PART NO. FPH10007-SXXBXXX4XXB	ITEM NO. FPH10007	 Leader Of Industry	
	DESIGN UNITS Inch (metric)	X.±.012(0.30) X.X±.008(0.20)	X.±5' .X±2'	CHECKED BY CHERRY	DATE 31/MAY/16	TITLE Board to Board(Pin Header) Pitch 1.00mm 90° Angle(DIP)		REV 0
SCALE 5:1	SIZE A4	X.XX±.006(0.15) X.XXX±.004(0.10)	.XX±1' .XXX±0.5'	DRAWN BY KATE	DATE 31/MAY/16	THIS DRAWING CONTAINS INFORMATION THAT IS PROPRIETARY TO TXGA INDUSTRIAL ELECTRONICS(S.Z)CO.,LTD AND SHOULD NOT BE USED WITHOUT WRITTEN PERMISSION		

REV	LOCATIONS	DESCRIPTION	DATE	REVISER	APPD

Circuits (n)	Part No.	Dimensions(in/mm)		Circuits (n)	Part No.	Dimensions(in/mm)	
		A	B			A	B
1	FPH10007-S01SXXX4XXB	—	.039(1.00)	21	FPH10007-S21SXXX4XXB	.787(20.00)	.827(21.00)
2	FPH10007-S02SXXX4XXB	.039(1.00)	.079(2.00)	22	FPH10007-S22SXXX4XXB	.827(21.00)	.866(22.00)
3	FPH10007-S03SXXX4XXB	.079(2.00)	.118(3.00)	23	FPH10007-S23SXXX4XXB	.866(22.00)	.906(23.00)
4	FPH10007-S04SXXX4XXB	.118(3.00)	.157(4.00)	24	FPH10007-S24SXXX4XXB	.906(23.00)	.945(24.00)
5	FPH10007-S05SXXX4XXB	.157(4.00)	.197(5.00)	25	FPH10007-S25SXXX4XXB	.945(24.00)	.984(25.00)
6	FPH10007-S06SXXX4XXB	.197(5.00)	.236(6.00)	26	FPH10007-S26SXXX4XXB	.984(25.00)	1.024(26.00)
7	FPH10007-S07SXXX4XXB	.236(6.00)	.276(7.00)	27	FPH10007-S27SXXX4XXB	1.024(26.00)	1.063(27.00)
8	FPH10007-S08SXXX4XXB	.276(7.00)	.315(8.00)	28	FPH10007-S28SXXX4XXB	1.063(27.00)	1.102(28.00)
9	FPH10007-S09SXXX4XXB	.315(8.00)	.354(9.00)	29	FPH10007-S29SXXX4XXB	1.102(28.00)	1.142(29.00)
10	FPH10007-S10SXXX4XXB	.354(9.00)	.394(10.00)	30	FPH10007-S30SXXX4XXB	1.142(29.00)	1.181(30.00)
11	FPH10007-S11SXXX4XXB	.394(10.00)	.443(11.00)	31	FPH10007-S31SXXX4XXB	1.181(30.00)	1.220(31.00)
12	FPH10007-S12SXXX4XXB	.443(11.00)	.472(12.00)	32	FPH10007-S32SXXX4XXB	1.220(31.00)	1.260(32.00)
13	FPH10007-S13SXXX4XXB	.472(12.00)	.512(13.00)	33	FPH10007-S33SXXX4XXB	1.260(32.00)	1.130(33.00)
14	FPH10007-S14SXXX4XXB	.512(13.00)	.551(14.00)	34	FPH10007-S34SXXX4XXB	1.130(33.00)	1.339(34.00)
15	FPH10007-S15SXXX4XXB	.551(14.00)	.591(15.00)	35	FPH10007-S35SXXX4XXB	1.339(34.00)	1.379(35.00)
16	FPH10007-S16SXXX4XXB	.591(15.00)	.630(16.00)	36	FPH10007-S36SXXX4XXB	1.379(35.00)	1.417(36.00)
17	FPH10007-S17SXXX4XXB	.630(16.00)	.669(17.00)	37	FPH10007-S37SXXX4XXB	1.417(36.00)	1.457(37.00)
18	FPH10007-S18SXXX4XXB	.669(17.00)	.709(18.00)	38	FPH10007-S38SXXX4XXB	1.457(37.00)	1.497(38.00)
19	FPH10007-S19SXXX4XXB	.709(18.00)	.748(19.00)	39	FPH10007-S39SXXX4XXB	1.497(38.00)	1.535(39.00)
20	FPH10007-S20SXXX4XXB	.748(19.00)	.787(20.00)	40	FPH10007-S40SXXX4XXB	1.535(39.00)	1.575(40.00)

 THIRD ANGLE PROJECTION	GENERAL TOLERANCES (UNLESS SPECIFIED)		APPROVE BY FRANK	DATE 31/MAY/16	PART NO. FPH10007-SXXBXXX4XXB	ITEM NO. FPH10007	 Leader Of Industry	
	DESIGN UNITS Inch (metric)	X.±.012(0.30) X.±5'	CHECKED BY CHERRY	DATE 31/MAY/16	TITLE Board to Board(Pin Header) Pitch 1.00mm 90° Angle(DIP)			REV 0 SHEET NO. 3/3
	SCALE 5:1	SIZE A4	X.XX±.008(0.20) .X'±2'	DRAWN BY KATE	DATE 31/MAY/16	THIS DRAWING CONTAINS INFORMATION THAT IS PROPRIETARY TO TXGA INDUSTRIAL ELECTRONICS(S.Z.)CO.,LTD AND SHOULD NOT BE USED WITHOUT WRITTEN PERMISSION		