

REV	LOCATIONS	DESCRIPTION	DATE	REVISER	APPD
1	△	Size changes	18/AUG/21	KATE	CHERRY

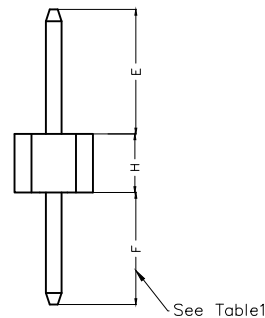
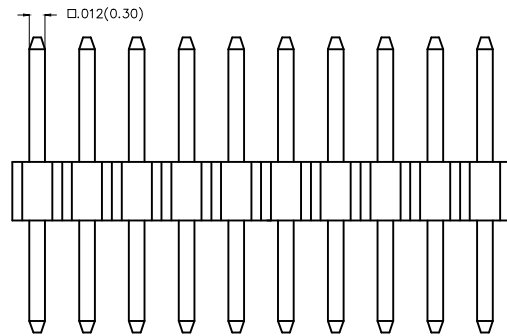
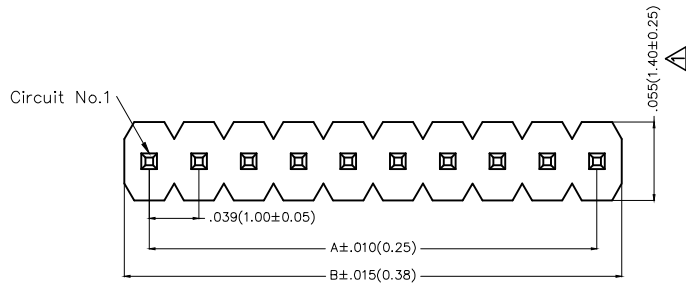
SPECIFICATIONS

Electrical

Current Rating: 1.0A AC(rms)/DC  
Voltage Rating: 250V AC(rms)/DC  
Contact Resistance: 20 m Max  
Insulation Resistance: 1000 M MIN  
Withstanding Voltage: 300V AC r.m.s  
Temperature Range-Operating: -40°C~+105°C

Material and Plating

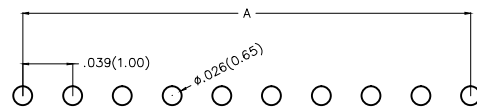
Housing: Glass Filled Polyester (UL 94V-0), Color: Black  
Pin: Brass  
Pin Plating: Gold plated/ Selective gold plated on contact area and 120µ" Min. matte tin plated on tails area



Ordering Information

FPH 100 24 S XX S X XX X XX XX X 0 B  
1 2 3 4 5 6 7 8 9 10 11 12 13

1 Category FPH-Pin Header	2 Series Number 100-Pitch1.00mm	3 Distinction No. 24	4 Row Option S-Single Row	5 Circuits XX	6 Entry Angle S-180° Vertical	7 Plating 1-Gold plated 7-Selective gold plated on contact area and matte tin plated on tails area
------------------------------	------------------------------------	-------------------------	------------------------------	------------------	----------------------------------	--



Recommended P.C.Board Layout

8 Thickness of Plating 01-1µ" 15-15µ" Custom plate available	9 Material-Resin 3-LCP 4-PA6T 5-PA9T	10 E Size 01,02...-Serial number (See Table1)	11 F Size 01,02...-Serial number (See Table1)	12 H Size 1,2...-Serial number (See Table1)	13 Packaging B-PE Bag
---	---	---	---	---	--------------------------

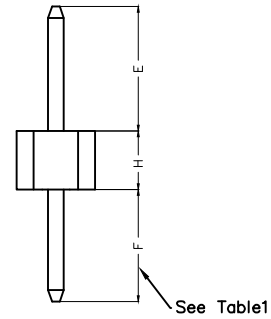
 <b>THIRD ANGLE PROJECTION</b>	GENERAL TOLERANCES (UNLESS SPECIFIED)		APPROVE BY FRANK	DATE 26/DEC/19	PART NO. FPH10024-SXXSXXXXXXXXX08	ITEM NO. FPH10024	 <b>TXGA</b> Leader Of Industry	
	X.±.012(0.30)	X.'±5'	CHECKED BY CHERRY	DATE 26/DEC/19	TITLE Board to Board(Pin Header) Pitch 1.00mm 180° Vertical(DIP)			REV 1
	DESIGN UNITS Inch (metric)	X.X±.008(0.20)	.X'±2'	DRAWN BY ZOEY	DATE 16/DEC/19	THIS DRAWING CONTAINS INFORMATION THAT IS PROPRIETARY TO TXGA INDUSTRIAL ELECTRONICS(S.Z)CO.,LTD AND SHOULD NOT BE USED WITHOUT WRITTEN PERMISSION		

REV	LOCATIONS	DESCRIPTION	DATE	REVISER	APPD

Table1

Serial number	Dimensions(in/mm) E	Serial number	Dimensions(in/mm) E
01	.059(1.50)	16	.207(5.25)
02	.069(1.75)	17	.217(5.50)
03	.079(2.00)	18	.226(5.75)
04	.089(2.25)	19	.236(6.00)
05	.098(2.50)	20	.246(6.25)
06	.108(2.75)	21	.256(6.50)
07	.118(3.00)	22	.266(6.75)
08	.128(3.25)	23	.276(7.00)
09	.138(3.50)	24	.285(7.25)
10	.148(3.75)	25	.295(7.50)
11	.157(4.00)	26	.305(7.75)
12	.167(4.25)	27	.315(8.00)
13	.177(4.50)	28	.325(8.25)
14	.187(4.75)	29	.335(8.50)
15	.197(5.00)		

Serial number	Dimensions(in/mm) F	Serial number	Dimensions(in/mm) F
01	.059(1.50)	16	.207(5.25)
02	.069(1.75)	17	.217(5.50)
03	.079(2.00)	18	.226(5.75)
04	.089(2.25)	19	.236(6.00)
05	.098(2.50)	20	.246(6.25)
06	.108(2.75)	21	.256(6.50)
07	.118(3.00)	22	.266(6.75)
08	.128(3.25)	23	.276(7.00)
09	.138(3.50)	24	.285(7.25)
10	.148(3.75)	25	.295(7.50)
11	.157(4.00)	26	.305(7.75)
12	.167(4.25)	27	.315(8.00)
13	.177(4.50)	28	.325(8.25)
14	.187(4.75)	29	.335(8.50)
15	.197(5.00)		



Serial number	Dimensions(in/mm) H
1	.039(1.00)
2	.059(1.50)

<p>THIRD ANGLE PROJECTION</p>	GENERAL TOLERANCES (UNLESS SPECIFIED)		APPROVE BY FRANK	DATE 26/DEC/19	PART NO. FPH10024-SXXXSXXXXXXXXX0B	ITEM NO. FPH10024	<p>Leader Of Industry</p>	
	DESIGN UNITS Inch (metric)	X.±.012(0.30)	X.'±5'	CHECKED BY CHERRY	DATE 26/DEC/19	TITLE Board to Board(Pin Header) Pitch 1.00mm 180° Vertical(DIP)		REV 1
	SCALE 5:1	X.XX±.008(0.20)	.X'±2'	DRAWN BY ZOEY	DATE 26/DEC/19	THIS DRAWING CONTAINS INFORMATION THAT IS PROPRIETARY TO TXGA INDUSTRIAL ELECTRONICS(S.Z)CO.,LTD AND SHOULD NOT BE USED WITHOUT WRITTEN PERMISSION		
	SIZE A4	X.XX±.006(0.15)	.XX'±1'					
	X.XXX±.004(0.10)	.XXX'±0.5'						

1 2 3 4 5 6 7 8

REV	LOCATIONS	DESCRIPTION	DATE	REVISER	APPD

A

A

B

B

C

C

D

D



E

E

F

F

Circuits (n)	Part No.	Dimensions(in/mm)		Circuits (n)	Part No.	Dimensions(in/mm)	
		A	B			A	B
1	FPH10024-S01SXXXXXXXXX0B	—	.039(1.00)	21	FPH10024-S21SXXXXXXXXX0B	.787(20.00)	.827(21.00)
2	FPH10024-S02SXXXXXXXXX0B	.039(1.00)	.079(2.00)	22	FPH10024-S22SXXXXXXXXX0B	.827(21.00)	.866(22.00)
3	FPH10024-S03SXXXXXXXXX0B	.079(2.00)	.118(3.00)	23	FPH10024-S23SXXXXXXXXX0B	.866(22.00)	.906(23.00)
4	FPH10024-S04SXXXXXXXXX0B	.118(3.00)	.157(4.00)	24	FPH10024-S24SXXXXXXXXX0B	.906(23.00)	.945(24.00)
5	FPH10024-S05SXXXXXXXXX0B	.157(4.00)	.197(5.00)	25	FPH10024-S25SXXXXXXXXX0B	.945(24.00)	.984(25.00)
6	FPH10024-S06SXXXXXXXXX0B	.197(5.00)	.236(6.00)	26	FPH10024-S26SXXXXXXXXX0B	.984(25.00)	1.024(26.00)
7	FPH10024-S07SXXXXXXXXX0B	.236(6.00)	.276(7.00)	27	FPH10024-S27SXXXXXXXXX0B	1.024(26.00)	1.063(27.00)
8	FPH10024-S08SXXXXXXXXX0B	.276(7.00)	.315(8.00)	28	FPH10024-S28SXXXXXXXXX0B	1.063(27.00)	1.102(28.00)
9	FPH10024-S09SXXXXXXXXX0B	.315(8.00)	.354(9.00)	29	FPH10024-S29SXXXXXXXXX0B	1.102(28.00)	1.142(29.00)
10	FPH10024-S10SXXXXXXXXX0B	.354(9.00)	.394(10.00)	30	FPH10024-S30SXXXXXXXXX0B	1.142(29.00)	1.181(30.00)
11	FPH10024-S11SXXXXXXXXX0B	.394(10.00)	.443(11.00)	31	FPH10024-S31SXXXXXXXXX0B	1.181(30.00)	1.220(31.00)
12	FPH10024-S12SXXXXXXXXX0B	.443(11.00)	.472(12.00)	32	FPH10024-S32SXXXXXXXXX0B	1.220(31.00)	1.260(32.00)
13	FPH10024-S13SXXXXXXXXX0B	.472(12.00)	.512(13.00)	33	FPH10024-S33SXXXXXXXXX0B	1.260(32.00)	1.130(33.00)
14	FPH10024-S14SXXXXXXXXX0B	.512(13.00)	.551(14.00)	34	FPH10024-S34SXXXXXXXXX0B	1.130(33.00)	1.339(34.00)
15	FPH10024-S15SXXXXXXXXX0B	.551(14.00)	.591(15.00)	35	FPH10024-S35SXXXXXXXXX0B	1.339(34.00)	1.379(35.00)
16	FPH10024-S16SXXXXXXXXX0B	.591(15.00)	.630(16.00)	36	FPH10024-S36SXXXXXXXXX0B	1.379(35.00)	1.417(36.00)
17	FPH10024-S17SXXXXXXXXX0B	.630(16.00)	.669(17.00)	37	FPH10024-S37SXXXXXXXXX0B	1.417(36.00)	1.457(37.00)
18	FPH10024-S18SXXXXXXXXX0B	.669(17.00)	.709(18.00)	38	FPH10024-S38SXXXXXXXXX0B	1.457(37.00)	1.497(38.00)
19	FPH10024-S19SXXXXXXXXX0B	.709(18.00)	.748(19.00)	39	FPH10024-S39SXXXXXXXXX0B	1.497(38.00)	1.535(39.00)
20	FPH10024-S20SXXXXXXXXX0B	.748(19.00)	.787(20.00)	40	FPH10024-S40SXXXXXXXXX0B	1.535(39.00)	1.575(40.00)

 THIRD ANGLE PROJECTION	GENERAL TOLERANCES (UNLESS SPECIFIED)		APPROVE BY FRANK	DATE 26/DEC/19	PART NO. FPH10024-SXXSXXXXXXXXX0B	ITEM NO. FPH10024	 Leader Of Industry	
	X.±.012(0.30)	X.±5'	CHECKED BY CHERRY	DATE 26/DEC/19	TITLE Board to Board(Pin Header) Pitch 1.00mm 180° Vertical(DIP)	REV 1		SHEET NO. 3/3
	DESIGN UNITS Inch (metric)	X.X±.008(0.20)	X.±2'	DRAWN BY ZOEY	DATE 26/DEC/19	THIS DRAWING CONTAINS INFORMATION THAT IS PROPRIETARY TO TXGA INDUSTRIAL ELECTRONICS(S.Z)CO.,LTD AND SHOULD NOT BE USED WITHOUT WRITTEN PERMISSION		
	SCALE 5:1	SIZE A4	X.XX±.006(0.15)	X.X±1'	X.XXX±.004(0.10)	X.XX±0.5'		

1 2 3 4 5 6 7 8