

Dimensions(in./mm)	
H	H1+H2
.079(2.00)	.039(1.00)+.039(1.00)
.098(2.50)	.039(1.00)+.059(1.50)
≥ .118(3.00)	.059(1.50)+.059(1.50)

REV	LOCATIONS	DESCRIPTION	DATE	REVISER	APPD
1	△	Size changes	25/JUN/21	KATE	CHERRY
2	△	Add dimensions	19/AUG/21	KATE	CHERRY

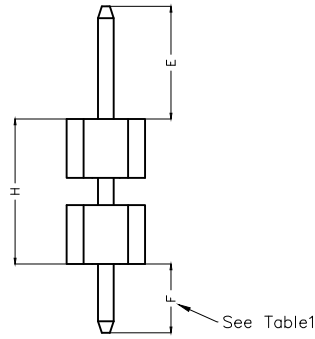
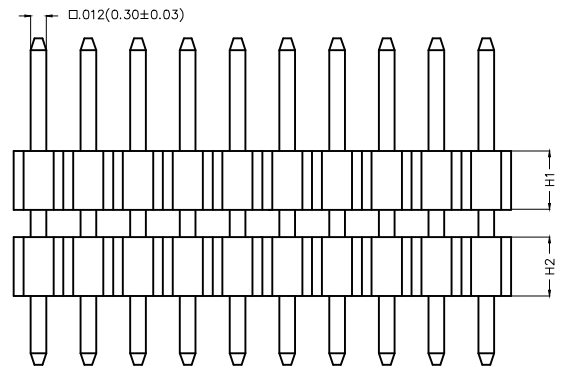
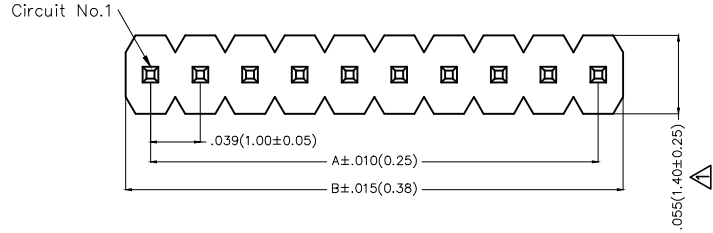
SPECIFICATIONS

Electrical

Current Rating: 1.0A AC(rms)/DC  
Voltage Rating: 250V AC(rms)/DC  
Contact Resistance: 20 m Max  
Insulation Resistance: 1000 M MIN  
Withstanding Voltage: 300V AC r.m.s  
Temperature Range—Operating: -40°C~+105°C

Material and Plating

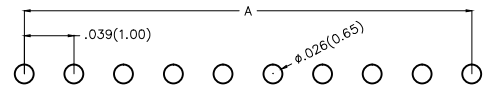
Housing: Glass Filled Polyester (UL 94V-0), Color: Black  
Pin: Brass  
Pin Plating: Gold plated/ Selective gold plated on contact area and 120µ" Min. matte tin plated on tails area



Ordering Information

FPH  $\frac{100}{1}$   $\frac{25}{2}$   $\frac{25}{3}$  -  $\frac{S}{4}$   $\frac{XX}{5}$   $\frac{S}{6}$   $\frac{X}{7}$   $\frac{XX}{8}$   $\frac{X}{9}$   $\frac{XX}{10}$   $\frac{XX}{11}$   $\frac{XX}{12}$   $\frac{B}{13}$

1 <u>Category</u> FPH—Pin Header	2 <u>Series Number</u> 100—Pitch 1.00mm	3 <u>Distinction No.</u> 25	4 <u>Row Option</u> S—Single Row	5 <u>Circuits</u> XX	6 <u>Entry Angle</u> S—180° Vertical	7 <u>Plating</u> 1—Gold plated 7—Selective gold plated on contact area and matte tin plated on tails area
8 <u>Thickness of Plating</u> 01—1µ" 15—15µ" Custom plate available	9 <u>Material—Resin</u> 3—LCP 4—PA6T 5—PA9T	10 <u>E Size</u> 01,02...—Serial number (See Table1)	11 <u>F Size</u> 01,02...—Serial number (See Table1)	12 <u>H Size</u> 01,02...—Serial number (See Table1)	13 <u>Packaging</u> B—PE Bag	



Recommended P.C. Board Layout

<p>THIRD ANGLE PROJECTION</p>	GENERAL TOLERANCES (UNLESS SPECIFIED)		APPROVE BY FRANK	DATE 26/DEC/19	PART NO. FPH10025-SXXXSXXXXXXXXXXB	ITEM NO. FPH10025	<p>Leader Of Industry</p>		
	DESIGN UNITS Inch (metric)	X.±.012(0.30) X.X±.008(0.20) X.XX±.006(0.15) X.XXX±.004(0.10)	X.'±5' X.'±2' .XX'±1" .XXX'±0.5'	CHECKED BY CHERRY	DATE 26/DEC/19	TITLE Board to Board(Pin Header) Pitch 1.00mm 180° Vertical(DIP)		REV 2	SHEET NO. 1/3
	SCALE 5:1	SIZE A4		DRAWN BY ZOEY	DATE 26/DEC/19	THIS DRAWING CONTAINS INFORMATION THAT IS PROPRIETARY TO TXGA INDUSTRIAL ELECTRONICS(S.Z)CO.,LTD AND SHOULD NOT BE USED WITHOUT WRITTEN PERMISSION			

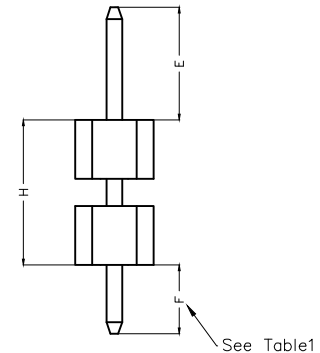
REV	LOCATIONS	DESCRIPTION	DATE	REVISER	APPD

Table1  
(\* Note: The pin length should be 18.5mm Max.)

Serial number	Dimensions (in/mm) E
01	.059(1.50)
02	.069(1.75)
03	.079(2.00)
04	.089(2.25)
05	.098(2.50)
06	.108(2.75)
07	.118(3.00)
08	.128(3.25)
09	.138(3.50)
10	.148(3.75)
11	.157(4.00)
12	.167(4.25)
13	.177(4.50)
14	.187(4.75)
15	.197(5.00)

Serial number	Dimensions (in/mm) F
01	.059(1.50)
02	.069(1.75)
03	.079(2.00)
04	.089(2.25)
05	.098(2.50)
06	.108(2.75)
07	.118(3.00)
08	.128(3.25)
09	.138(3.50)
10	.148(3.75)
11	.157(4.00)
12	.167(4.25)
13	.177(4.50)
14	.187(4.75)
15	.197(5.00)

Serial number	Dimensions (in/mm) H	Serial number	Dimensions (in/mm) H
A1	.079(2.00)	13	.354(9.00)
A2	.098(2.50)	14	.374(9.50)
01	.118(3.00)	15	.394(10.00)
02	.138(3.50)	16	.413(10.50)
03	.157(4.00)	17	.433(11.00)
04	.177(4.50)	18	.453(11.50)
05	.197(5.00)	19	.472(12.00)
06	.217(5.50)	20	.492(12.50)
07	.236(6.00)	21	.512(13.00)
08	.256(6.50)	22	.531(13.50)
09	.276(7.00)	23	.551(14.00)
10	.295(7.50)	24	.571(14.50)
11	.315(8.00)	25	.591(15.00)
12	.335(8.50)	26	.610(15.50)



 THIRD ANGLE PROJECTION	GENERAL TOLERANCES (UNLESS SPECIFIED)		APPROVE BY FRANK	DATE 26/DEC/19	PART NO. FPH10025-SXXSXXXXXXXXXXB	ITEM NO. FPH10025	 Leader Of Industry	
	DESIGN UNITS Inch (metric)	X.±.012(0.30)	X.'±5'	CHECKED BY CHERRY	DATE 26/DEC/19	TITLE Board to Board(Pin Header) Pitch 1.00mm 180° Vertical(DIP)		REV 2
	SCALE 5:1	X.XX±.008(0.20)	.X'±2'	DRAWN BY ZOEY	DATE 26/DEC/19	THIS DRAWING CONTAINS INFORMATION THAT IS PROPRIETARY TO TXGA INDUSTRIAL ELECTRONICS(S.Z)CO.,LTD AND SHOULD NOT BE USED WITHOUT WRITTEN PERMISSION		
	SIZE A4	X.XX±.006(0.15)	.XX'±1'					
	X.XXX±.004(0.10)	.XXX'±0.5'						

1 2 3 4 5 6 7 8

REV	LOCATIONS	DESCRIPTION	DATE	REVISER	APPD

A

A

B

B

C

C

D

D



E

E

F

F

Circuits (n)	Part No.	Dimensions(in/mm)		Circuits (n)	Part No.	Dimensions(in/mm)	
		A	B			A	B
1	FPH10025-S01SXXXXXXXXXB	—	.039(1.00)	21	FPH10025-S21SXXXXXXXXXB	.787(20.00)	.827(21.00)
2	FPH10025-S02SXXXXXXXXXB	.039(1.00)	.079(2.00)	22	FPH10025-S22SXXXXXXXXXB	.827(21.00)	.866(22.00)
3	FPH10025-S03SXXXXXXXXXB	.079(2.00)	.118(3.00)	23	FPH10025-S23SXXXXXXXXXB	.866(22.00)	.906(23.00)
4	FPH10025-S04SXXXXXXXXXB	.118(3.00)	.157(4.00)	24	FPH10025-S24SXXXXXXXXXB	.906(23.00)	.945(24.00)
5	FPH10025-S05SXXXXXXXXXB	.157(4.00)	.197(5.00)	25	FPH10025-S25SXXXXXXXXXB	.945(24.00)	.984(25.00)
6	FPH10025-S06SXXXXXXXXXB	.197(5.00)	.236(6.00)	26	FPH10025-S26SXXXXXXXXXB	.984(25.00)	1.024(26.00)
7	FPH10025-S07SXXXXXXXXXB	.236(6.00)	.276(7.00)	27	FPH10025-S27SXXXXXXXXXB	1.024(26.00)	1.063(27.00)
8	FPH10025-S08SXXXXXXXXXB	.276(7.00)	.315(8.00)	28	FPH10025-S28SXXXXXXXXXB	1.063(27.00)	1.102(28.00)
9	FPH10025-S09SXXXXXXXXXB	.315(8.00)	.354(9.00)	29	FPH10025-S29SXXXXXXXXXB	1.102(28.00)	1.142(29.00)
10	FPH10025-S10SXXXXXXXXXB	.354(9.00)	.394(10.00)	30	FPH10025-S30SXXXXXXXXXB	1.142(29.00)	1.181(30.00)
11	FPH10025-S11SXXXXXXXXXB	.394(10.00)	.443(11.00)	31	FPH10025-S31SXXXXXXXXXB	1.181(30.00)	1.220(31.00)
12	FPH10025-S12SXXXXXXXXXB	.443(11.00)	.472(12.00)	32	FPH10025-S32SXXXXXXXXXB	1.220(31.00)	1.260(32.00)
13	FPH10025-S13SXXXXXXXXXB	.472(12.00)	.512(13.00)	33	FPH10025-S33SXXXXXXXXXB	1.260(32.00)	1.130(33.00)
14	FPH10025-S14SXXXXXXXXXB	.512(13.00)	.551(14.00)	34	FPH10025-S34SXXXXXXXXXB	1.130(33.00)	1.339(34.00)
15	FPH10025-S15SXXXXXXXXXB	.551(14.00)	.591(15.00)	35	FPH10025-S35SXXXXXXXXXB	1.339(34.00)	1.379(35.00)
16	FPH10025-S16SXXXXXXXXXB	.591(15.00)	.630(16.00)	36	FPH10025-S36SXXXXXXXXXB	1.379(35.00)	1.417(36.00)
17	FPH10025-S17SXXXXXXXXXB	.630(16.00)	.669(17.00)	37	FPH10025-S37SXXXXXXXXXB	1.417(36.00)	1.457(37.00)
18	FPH10025-S18SXXXXXXXXXB	.669(17.00)	.709(18.00)	38	FPH10025-S38SXXXXXXXXXB	1.457(37.00)	1.497(38.00)
19	FPH10025-S19SXXXXXXXXXB	.709(18.00)	.748(19.00)	39	FPH10025-S39SXXXXXXXXXB	1.497(38.00)	1.535(39.00)
20	FPH10025-S20SXXXXXXXXXB	.748(19.00)	.787(20.00)	40	FPH10025-S40SXXXXXXXXXB	1.535(39.00)	1.575(40.00)

 THIRD ANGLE PROJECTION	GENERAL TOLERANCES (UNLESS SPECIFIED)		APPROVE BY FRANK	DATE 26/DEC/19	PART NO. FPH10025-SXXSXXXXXXXXXB	ITEM NO. FPH10025	 Leader Of Industry	
	DESIGN UNITS Inch (metric)	X.±.012(0.30) X.X±.008(0.20) X.XX±.006(0.15) X.XXX±.004(0.10)	X.±5' X'±2' .XX±1' .XXX±0.5'	CHECKED BY CHERRY	DATE 26/DEC/19	TITLE Board to Board(Pin Header) Pitch 1.00mm 180° Vertical(DIP)		REV 2
SCALE 5:1	SIZE A4	DRAWN BY ZOEY		DATE 26/DEC/19	THIS DRAWING CONTAINS INFORMATION THAT IS PROPRIETARY TO TXGA INDUSTRIAL ELECTRONICS(S.Z)CO.,LTD AND SHOULD NOT BE USED WITHOUT WRITTEN PERMISSION			

1 2 3 4 5 6 7 8