

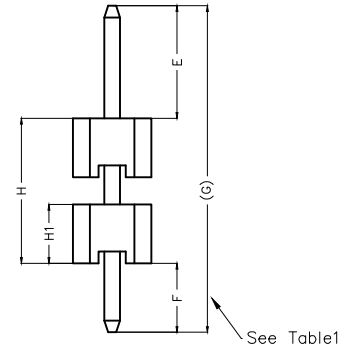
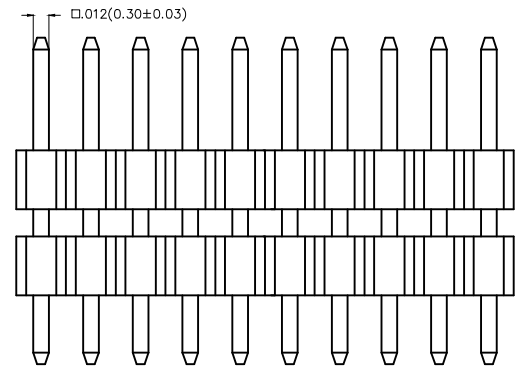
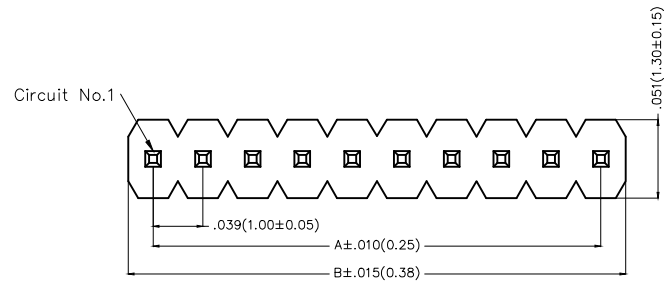
1 2 3 4 5 6 7 8

REV	LOCATIONS	DESCRIPTION	DATE	REVSER	APPD

**SPECIFICATIONS**

**Electrical**  
 Current Rating: 1.0A AC(rms)/DC  
 Voltage Rating: 250V AC(rms)/DC  
 Contact Resistance: 20 m Max  
 Insulation Resistance: 1000 M MIN  
 Withstanding Voltage: 300V AC r.m.s  
 Temperature Range-Operating: -40°C~+105°C

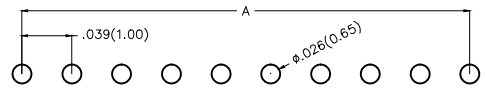
**Material and Plating**  
 Housing: Glass Filled Polyester (UL 94V-0), Color: Black  
 Pin: Brass  
 Pin Plating: Gold plated/ Selective gold in contact area, tin on tail



**Ordering Information**

FPH 100 E1 S XX S X XX X XX B  
 1 2 3 4 5 6 7 8 9 10 11

1 Category FPH-Pin Header	2 Series Number 100-Pitch1.00mm	3 Distinction No. E1	4 Row Option S-Single Row	5 Circuits XX	6 Entry Angle S-180° Vertical
7 Plating 1-Gold plated 3-Selective gold in contact area, tin on tail	8 Thickness of Plating 01-1μ" 15-15μ" Custom plate available	9 Material-Resin 3-LCP 4-PA6T 5-PA9T	10 Size 01,02... -Serial number (See Table1) Custom length available	11 Packaging B-PE Bag	



Recommended P.C.Board Layout

 THIRD ANGLE PROJECTION	GENERAL TOLERANCES (UNLESS SPECIFIED)		APPROVE BY FRANK	DATE 25/JUN/13	PART NO. FPH100E1-SXXSXXXXXXB	ITEM NO. FPH100E1	 Leader Of Industry	
	DESIGN UNITS Inch (metric)	X.±.012(0.30) X.X±.008(0.20) X.XX±.006(0.15) X.XXX±.004(0.10)	X.±5° .X'±2° .XX'±1° .XXX'±0.5°	CHECKED BY CHERRY	DATE 25/JUN/13	TITLE Board to Board(Pin Header) Pitch 1.00mm 180° Vertical(DIP)		REV 0
SCALE 5:1	SIZE A4		DRAWN BY JACOB	DATE 25/JUN/13	THIS DRAWING CONTAINS INFORMATION THAT IS PROPRIETARY TO TXGA INDUSTRIAL ELECTRONICS(S.Z)CO.,LTD AND SHOULD NOT BE USED WITHOUT WRITTEN PERMISSION			

1 2 3 4 5 6 7 8



1 2 3 4 5 6 7 8

REV	LOCATIONS	DESCRIPTION	DATE	REVSER	APPD

Circuits (n)	Part No.	Dimensions(in/mm)		Circuits (n)	Part No.	Dimensions(in/mm)	
		A	B			A	B
1	FPH100E1-S01SXXXXXXB	—	.039(1.00)	21	FPH100E1-S21SXXXXXXB	.787(20.00)	.827(21.00)
2	FPH100E1-S02SXXXXXXB	.039(1.00)	.079(2.00)	22	FPH100E1-S22SXXXXXXB	.827(21.00)	.866(22.00)
3	FPH100E1-S03SXXXXXXB	.079(2.00)	.118(3.00)	23	FPH100E1-S23SXXXXXXB	.866(22.00)	.906(23.00)
4	FPH100E1-S04SXXXXXXB	.118(3.00)	.157(4.00)	24	FPH100E1-S24SXXXXXXB	.906(23.00)	.945(24.00)
5	FPH100E1-S05SXXXXXXB	.157(4.00)	.197(5.00)	25	FPH100E1-S25SXXXXXXB	.945(24.00)	.984(25.00)
6	FPH100E1-S06SXXXXXXB	.197(5.00)	.236(6.00)	26	FPH100E1-S26SXXXXXXB	.984(25.00)	1.024(26.00)
7	FPH100E1-S07SXXXXXXB	.236(6.00)	.276(7.00)	27	FPH100E1-S27SXXXXXXB	1.024(26.00)	1.063(27.00)
8	FPH100E1-S08SXXXXXXB	.276(7.00)	.315(8.00)	28	FPH100E1-S28SXXXXXXB	1.063(27.00)	1.102(28.00)
9	FPH100E1-S09SXXXXXXB	.315(8.00)	.354(9.00)	29	FPH100E1-S29SXXXXXXB	1.102(28.00)	1.142(29.00)
10	FPH100E1-S10SXXXXXXB	.354(9.00)	.394(10.00)	30	FPH100E1-S30SXXXXXXB	1.142(29.00)	1.181(30.00)
11	FPH100E1-S11SXXXXXXB	.394(10.00)	.443(11.00)	31	FPH100E1-S31SXXXXXXB	1.181(30.00)	1.220(31.00)
12	FPH100E1-S12SXXXXXXB	.443(11.00)	.472(12.00)	32	FPH100E1-S32SXXXXXXB	1.220(31.00)	1.260(32.00)
13	FPH100E1-S13SXXXXXXB	.472(12.00)	.512(13.00)	33	FPH100E1-S33SXXXXXXB	1.260(32.00)	1.130(33.00)
14	FPH100E1-S14SXXXXXXB	.512(13.00)	.551(14.00)	34	FPH100E1-S34SXXXXXXB	1.130(33.00)	1.339(34.00)
15	FPH100E1-S15SXXXXXXB	.551(14.00)	.591(15.00)	35	FPH100E1-S35SXXXXXXB	1.339(34.00)	1.379(35.00)
16	FPH100E1-S16SXXXXXXB	.591(15.00)	.630(16.00)	36	FPH100E1-S36SXXXXXXB	1.379(35.00)	1.417(36.00)
17	FPH100E1-S17SXXXXXXB	.630(16.00)	.669(17.00)	37	FPH100E1-S37SXXXXXXB	1.417(36.00)	1.457(37.00)
18	FPH100E1-S18SXXXXXXB	.669(17.00)	.709(18.00)	38	FPH100E1-S38SXXXXXXB	1.457(37.00)	1.497(38.00)
19	FPH100E1-S19SXXXXXXB	.709(18.00)	.748(19.00)	39	FPH100E1-S39SXXXXXXB	1.497(38.00)	1.535(39.00)
20	FPH100E1-S20SXXXXXXB	.748(19.00)	.787(20.00)	40	FPH100E1-S40SXXXXXXB	1.535(39.00)	1.575(40.00)

A

B

C

D

E

F

A



B

C

D

E

F

 THIRD ANGLE PROJECTION	GENERAL TOLERANCES (UNLESS SPECIFIED)		APPROVE BY FRANK	DATE 25/JUN/13	PART NO. FPH100E1-SXXSXXXXXXB	ITEM NO. FPH100E1	 Leader Of Industry	
	DESIGN UNITS Inch (metric)	X.±.012(0.30)	.X'±5'	CHECKED BY CHERRY	DATE 25/JUN/13	TITLE Board to Board(Pin Header) Pitch 1.00mm 180° Vertical(DIP)		REV 0
SCALE 5:1	SIZE A4	X.XX±.006(0.15)	.XX'±1'	DRAWN BY JACOB	DATE 25/JUN/13	THIS DRAWING CONTAINS INFORMATION THAT IS PROPRIETARY TO TXGA INDUSTRIAL ELECTRONICS(S.Z)CO.,LTD AND SHOULD NOT BE USED WITHOUT WRITTEN PERMISSION		

1 2 3 4 5 6 7 8