

REV	LOCATIONS	DESCRIPTION	DATE	REVISER	APPD

SPECIFICATIONS

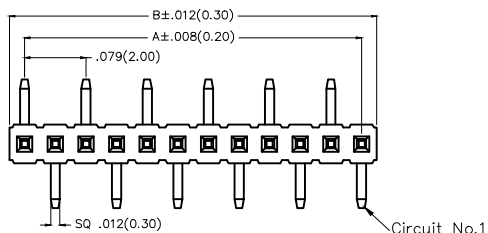
Electrical

Current Rating: 1.0A AC(rms)/DC
Voltage Rating: 250V AC(rms)/DC
Contact Resistance: 20 mΩ Max
Insulation Resistance: 1000 MΩ MIN
Withstanding Voltage: 300V AC r.m.s
Temperature Range-Operating: -40°C~+85°C

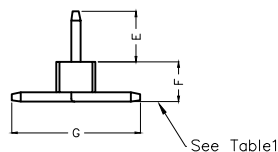
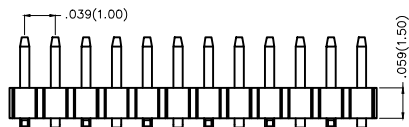
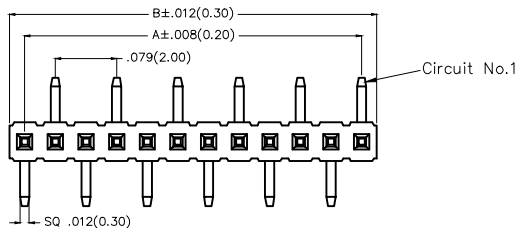
Material

Housing: Glass Filled Polyester (UL 94V-0), Color: Black
Pin: Brass
Pin Plating: Gold plated/ Selective gold in contact area, bright tin on tail

Type A
FPH100S1-SXXSXXX4XXMA



Type B
FPH100S1-SXXSXXX4XXMB

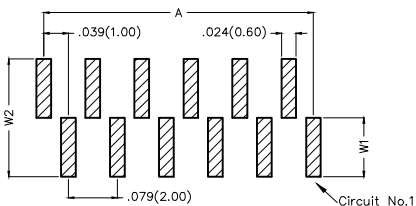


Ordering Information

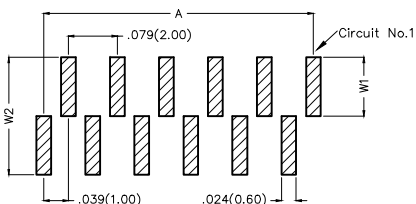
FPH 100 S1 - S XX S X XX 4 XX M X
1 2 3 4 5 6 7 8 9 10 11 12

1 Category FPH-Pin Header	2 Series Number 100-Pitch 1.00mm	3 Distinction No. S1	4 Row Option S-Single Row	5 Circuits XX	6 Entry Angle S-180° Vertical
7 Plating 1-Gold plated 3-Selective gold in contact area, bright tin on tail	8 Thickness of Plating 01-1μ" 05-5μ" 15-15μ" Custom plate available	9 Material-Resin 4-PA6T	10 Size 01,02... -Serial number (See Table1) Custom length available	11 Packaging M-Reel	12 Type A-Type A B-Type B


Type A
FPH100S1-SXXSXXX4XXMA



Type B
FPH100S1-SXXSXXX4XXMB





Recommended P.C.Board Layout

THIRD ANGLE PROJECTION	GENERAL TOLERANCES (UNLESS SPECIFIED)		APPROVE BY FRANK	DATE 25/JUN/13	PART NO. FPH100S1-SXXSXXX4XXMX	ITEM NO. FPH100S1	 Leader Of Industry	
	DESIGN UNITS Inch (metric)	X.±.012(0.30) X.X±.008(0.20) X.XX±.006(0.15) X.XXX±.004(0.10)	X.±5' .X'±2' .XX'±1' .XXX'±0.5'	CHECKED BY CHERRY	DATE 25/JUN/13	TITLE Board to Board(Pin Header) Pitch 1.00mm 180° Vertical(SMT)		REV 0
SCALE 5:1	SIZE A4	DRAWN BY JACOB		DATE 25/JUN/13	THIS DRAWING CONTAINS INFORMATION THAT IS PROPRIETARY TO TXGA INDUSTRIAL ELECTRONICS(S.Z.)CO.,LTD AND SHOULD NOT BE USED WITHOUT WRITTEN PERMISSION			

REV	LOCATIONS	DESCRIPTION	DATE	REVISER	APPD

Table1

Circuits (n)	Part No.	Dimensions(in/mm)		Circuits (n)	Part No.	Dimensions(in/mm)	
		A	B			A	B
1	FPH100S1-S01SXXX4XXMX	—	.039(1.00)	21	FPH100S1-S21SXXX4XXMX	.787(20.00)	.827(21.00)
2	FPH100S1-S02SXXX4XXMX	.039(1.00)	.079(2.00)	22	FPH100S1-S22SXXX4XXMX	.827(21.00)	.866(22.00)
3	FPH100S1-S03SXXX4XXMX	.079(2.00)	.118(3.00)	23	FPH100S1-S23SXXX4XXMX	.866(22.00)	.906(23.00)
4	FPH100S1-S04SXXX4XXMX	.118(3.00)	.157(4.00)	24	FPH100S1-S24SXXX4XXMX	.906(23.00)	.945(24.00)
5	FPH100S1-S05SXXX4XXMX	.157(4.00)	.197(5.00)	25	FPH100S1-S25SXXX4XXMX	.945(24.00)	.984(25.00)
6	FPH100S1-S06SXXX4XXMX	.197(5.00)	.236(6.00)	26	FPH100S1-S26SXXX4XXMX	.984(25.00)	1.024(26.00)
7	FPH100S1-S07SXXX4XXMX	.236(6.00)	.276(7.00)	27	FPH100S1-S27SXXX4XXMX	1.024(26.00)	1.063(27.00)
8	FPH100S1-S08SXXX4XXMX	.276(7.00)	.315(8.00)	28	FPH100S1-S28SXXX4XXMX	1.063(27.00)	1.102(28.00)
9	FPH100S1-S09SXXX4XXMX	.315(8.00)	.354(9.00)	29	FPH100S1-S29SXXX4XXMX	1.102(28.00)	1.142(29.00)
10	FPH100S1-S10SXXX4XXMX	.354(9.00)	.394(10.00)	30	FPH100S1-S30SXXX4XXMX	1.142(29.00)	1.181(30.00)
11	FPH100S1-S11SXXX4XXMX	.394(10.00)	.443(11.00)	31	FPH100S1-S31SXXX4XXMX	1.181(30.00)	1.220(31.00)
12	FPH100S1-S12SXXX4XXMX	.443(11.00)	.472(12.00)	32	FPH100S1-S32SXXX4XXMX	1.220(31.00)	1.260(32.00)
13	FPH100S1-S13SXXX4XXMX	.472(12.00)	.512(13.00)	33	FPH100S1-S33SXXX4XXMX	1.260(32.00)	1.130(33.00)
14	FPH100S1-S14SXXX4XXMX	.512(13.00)	.551(14.00)	34	FPH100S1-S34SXXX4XXMX	1.130(33.00)	1.339(34.00)
15	FPH100S1-S15SXXX4XXMX	.551(14.00)	.591(15.00)	35	FPH100S1-S35SXXX4XXMX	1.339(34.00)	1.379(35.00)
16	FPH100S1-S16SXXX4XXMX	.591(15.00)	.630(16.00)	36	FPH100S1-S36SXXX4XXMX	1.379(35.00)	1.417(36.00)
17	FPH100S1-S17SXXX4XXMX	.630(16.00)	.669(17.00)	37	FPH100S1-S37SXXX4XXMX	1.417(36.00)	1.457(37.00)
18	FPH100S1-S18SXXX4XXMX	.669(17.00)	.709(18.00)	38	FPH100S1-S38SXXX4XXMX	1.457(37.00)	1.497(38.00)
19	FPH100S1-S19SXXX4XXMX	.709(18.00)	.748(19.00)	39	FPH100S1-S39SXXX4XXMX	1.497(38.00)	1.535(39.00)
20	FPH100S1-S20SXXX4XXMX	.748(19.00)	.787(20.00)	40	FPH100S1-S40SXXX4XXMX	1.535(39.00)	1.575(40.00)

 THIRD ANGLE PROJECTION	GENERAL TOLERANCES (UNLESS SPECIFIED)		APPROVE BY FRANK	DATE 25/JUN/13	PART NO. FPH100S1-SXXSXXX4XXMX	ITEM NO. FPH100S1	 Leader Of Industry
	X.±.012(0.30)	X.±5'	CHECKED BY CHERRY	DATE 25/JUN/13	TITLE Board to Board(Pin Header) Pitch 1.00mm 180° Vertical(SMT)		
DESIGN UNITS Inch (metric)	X.XX±.008(0.20)	.X'±2'	DRAWN BY JACOB	DATE 25/JUN/13	THIS DRAWING CONTAINS INFORMATION THAT IS PROPRIETARY TO TXGA INDUSTRIAL ELECTRONICS(S.Z)CO.,LTD AND SHOULD NOT BE USED WITHOUT WRITTEN PERMISSION		
SCALE 5:1	SIZE A4	X.XX±.006(0.15)					
		X.XXX±.004(0.10)					