

REV	LOCATIONS	DESCRIPTION	DATE	REVISER	APPD

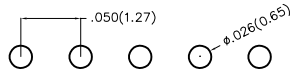
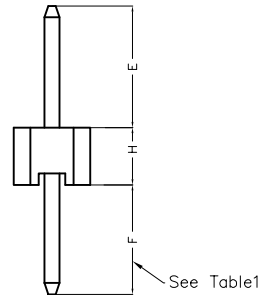
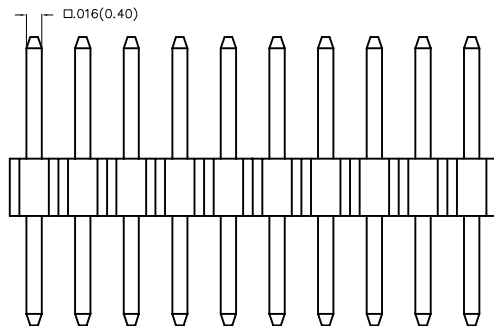
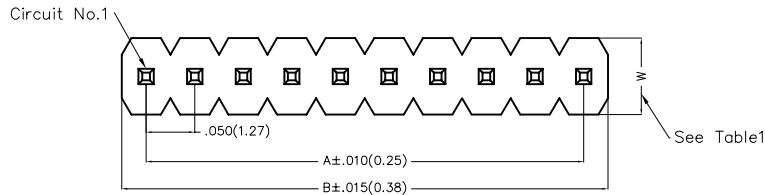
SPECIFICATIONS

Electrical

Current Rating: 1.0A AC(rms)/DC
Voltage Rating: 250V AC(rms)/DC
Contact Resistance: 20 mΩ Max
Insulation Resistance: 1000 MΩ Min
Withstanding Voltage: 600V AC r.m.s
Temperature Range—Operating: -40°C~+105°C

Material and Plating

Housing: Glass Filled Polyester (UL 94V-0), Color: Black
Pin: Brass
Pin Plating: Gold plated/ Selective gold in contact area, bright tin on tail



Recommended P.C.Board Layout

Ordering Information

FPH 127 01 - S XX S X XX 4 XX B
1 2 3 4 5 6 7 8 9 10 11

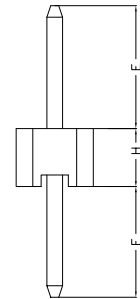
1 <u>Category</u> FPH-Pin Header	2 <u>Series Number</u> 127-Pitch1.27mm	3 <u>Distinction No.</u> 01	4 <u>Row Option</u> S-Single Row	5 <u>Circuits</u> XX	6 <u>Entry Angle</u> S-180° Vertical
7 <u>Plating</u> 1-Gold plated 3-Selective gold in contact area, bright tin on tail	8 <u>Thickness of Plating</u> 01-1μ" 15-15μ" Custom plate available	9 <u>Material-Resin</u> 4-PA6T	10 <u>Size</u> 01,02... -Serial number (See Table1) Custom length available	11 <u>Packaging</u> B-PE Bag	

<p>THIRD ANGLE PROJECTION</p>	GENERAL TOLERANCES (UNLESS SPECIFIED)		APPROVE BY FRANK	DATE 13/JUN/16	PART NO. FPH12701-SXXSXX4XXB	ITEM NO. FPH12701	<p>Leader Of Industry</p>
	X.±.012(0.30)	X.±5'	CHECKED BY CHERRY	DATE 13/JUN/16	TITLE Board to Board(Pin Header) Pitch 1.27mm 180° Vertical(DIP)	REV 0	
DESIGN UNITS Inch (metric)	X.X±.008(0.20)	.X'±2'	DRAWN BY JACOB	DATE 13/JUN/16	THIS DRAWING CONTAINS INFORMATION THAT IS PROPRIETARY TO TXGA INDUSTRIAL ELECTRONICS(S.Z)CO.,LTD AND SHOULD NOT BE USED WITHOUT WRITTEN PERMISSION		
SCALE 5:1	SIZE A4	X.XXX±.004(0.10)	.XXX'±0.5'				

REV	LOCATIONS	DESCRIPTION	DATE	REVISER	APPD

Table1

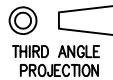

Serial number	Dimensions(in/mm)				Canceled Circuits	Note	Serial number	Dimensions(in/mm)				Canceled Circuits	Note
	E	F	H	W				E	F	H	W		
01	.138(3.50)	.138(3.50)	.059(1.50)	.079(2.00)	——		27	.118(3.00)	.098(2.50)	.059(1.50)	.079(2.00)	——	
02	.118(3.00)	.091(2.30)	.059(1.50)	.079(2.00)	——		28	.157(4.00)	.118(3.00)	.098(2.50)	.098(2.50)	——	
03	.185(4.70)	.118(3.00)	.098(2.50)	.098(2.50)	——		29	.150(3.80)	.079(2.00)	.067(1.70)	.098(2.50)	——	
04	.110(2.80)	.110(2.80)	.059(1.50)	.079(2.00)	——		30	.157(4.00 ±0.2)	.043(1.10)	.039(1.00)	.079(2.00)	——	
05	.118(3.00)	.071(1.80)	.059(1.50)	.079(2.00)	——		31	.071(1.80)	.091(2.30)	.079(2.00)	.098(2.50)	——	
06	.118(3.00)	.071(1.80)	.098(2.50)	.039(2.50)	——		32	.157(4.00 ±0.2)	.059(1.50)	.039(1.00)	.079(2.00)	——	
07	.177(4.50)	.098(2.50)	.098(2.50)	.098(2.50)	——		33	.157(4.00)	.079(2.00)	.098(2.50)	.079(2.00)	——	
08							34	.236(6.00)	.110(2.80)	.079(2.00)	.098(2.50)	——	
09	.024(0.60)	.047(1.20)	.059(1.50)	.079(2.00)	No.2,3,4	Only 5Circuits	35	.079(2.00)	.079(2.00)	.079(2.00)	.098(2.50)	——	
10	.024(0.60)	.047(1.20)	.059(1.50)	.079(2.00)	No.2,4	Only 5Circuits	36	.157(4.00)	.079(2.00)	.079(2.00)	.098(2.50)	——	
11	.157(4.00)	.098(2.50)	.039(1.00)	.079(2.00)	——		37	.394(10.00)	.079(2.00)	.079(2.00)	.098(2.50)	——	
12	.164(4.10)	.087(2.10)	.039(1.00)	.079(2.00)	——		38	.161(4.10)	.035(0.90)	.079(2.00)	.098(2.50)	——	
13	.075(1.90)	.075(1.90)	.039(1.00)	.079(2.00)	——		39	.138(3.50)	.079(2.00)	.098(2.50)	.098(2.50)	——	
14	.059(1.50)	.059(1.50)	.059(1.50)	.079(2.00)	——		40	.110(2.80)	.079(2.00)	.067(1.70)	.098(2.50)	——	
15	.374(9.50)	.071(1.80)	.059(1.50)	.079(2.00)	——		41						
16	.118(3.00)	.138(3.50)	.059(1.50)	.079(2.00)	——		42	.102(2.60)	.102(2.60)	.079(2.00)	.098(2.50)	——	
17	.157(4.00)	.110(2.80)	.039(1.00)	.079(2.00)	——		43	.185(4.70)	.118(3.00)	.059(1.50)	.079(2.00)	——	
18	.118(3.00)	.071(1.80)	.039(1.00)	.079(2.00)	——		44	.236(6.00)	.138(3.50)	.098(2.50)	.098(2.50)	——	
19	.157(4.00)	.059(1.50)	.098(2.50)	.079(2.00)	——		45	.110(2.80)	.110(2.80)	.067(1.70)	.098(2.50)	——	
20	.157(4.00 ±0.2)	.059(1.50)	.039(1.00)	.079(2.00)	——		46	.146(3.70)	.098(2.50)	.039(1.00)	.079(2.00)	——	
21	.229(5.84)	.100(2.540)	.098(2.50)	.079(2.00)	——		47	.114(2.90)	.240(6.10)	.039(1.00)	.079(2.00)	No.2,4	Only 5Circuits
22	.110(2.80)	.087(2.20)	.060(1.50)	.098(2.50)	——								
23	.110(2.80)	.087(2.20)	.067(1.70)	.098(2.50)	——								
24	.110(3.00)	.087(2.30)	.039(1.00)	.079(2.00)	——								
25	.110(3.00)	.087(2.20)	.039(2.00)	.098(2.50)	——								
26	.138(3.50)	.138(3.50)	.059(1.50)	.079(2.00)	No.1	Only 6Circuits							



<p>THIRD ANGLE PROJECTION</p>	<p>GENERAL TOLERANCES (UNLESS SPECIFIED)</p>		<p>APPROVE BY</p> <p>FRANK</p>	<p>DATE</p> <p>13/JUN/16</p>	<p>PART NO.</p> <p>FPH12701-SXXSXX4XXB</p>	<p>ITEM NO.</p> <p>FPH12701</p>	<p>Leader Of Industry</p>
	<p>DESIGN UNITS</p> <p>Inch (metric)</p>	<p>X.±.012(0.30)</p> <p>X.X±.008(0.20)</p> <p>X.XX±.006(0.15)</p> <p>X.XXX±.004(0.10)</p>	<p>X.±5'</p> <p>.X'±2'</p> <p>.XX'±1'</p> <p>.XXX'±0.5'</p>	<p>CHECKED BY</p> <p>CERRY</p>	<p>DATE</p> <p>13/JUN/16</p>	<p>TITLE</p> <p>Board to Board(Pin Header)</p> <p>Pitch 1.27mm 180° Vertical(DIP)</p>	
<p>SCALE</p> <p>5:1</p>	<p>SIZE</p> <p>A4</p>	<p>DRAWN BY</p> <p>JACOB</p>	<p>DATE</p> <p>13/JUN/16</p>	<p>THIS DRAWING CONTAINS INFORMATION THAT IS PROPRIETARY TO TXGA INDUSTRIAL ELECTRONICS(S.Z)CO.,LTD AND SHOULD NOT BE USED WITHOUT WRITTEN PERMISSION</p>			

REV	LOCATIONS	DESCRIPTION	DATE	REVISER	APPD

Circuits (n)	Part No.	Dimensions(in/mm)		Circuits (n)	Part No.	Dimensions(in/mm)	
		A	B			A	B
1	FPH12701-S01SXXX4XXB	—	.050(1.27)	21	FPH12701-S21SXXX4XXB	1.000(25.40)	1.050(26.67)
2	FPH12701-S02SXXX4XXB	.050(1.27)	.100(2.54)	22	FPH12701-S22SXXX4XXB	1.050(26.67)	1.100(27.94)
3	FPH12701-S03SXXX4XXB	.100(2.54)	.150(3.81)	23	FPH12701-S23SXXX4XXB	1.100(27.94)	1.150(29.21)
4	FPH12701-S04SXXX4XXB	.150(3.81)	.200(5.08)	24	FPH12701-S24SXXX4XXB	1.150(29.21)	1.200(30.48)
5	FPH12701-S05SXXX4XXB	.200(5.08)	.250(6.35)	25	FPH12701-S25SXXX4XXB	1.200(30.48)	1.250(31.75)
6	FPH12701-S06SXXX4XXB	.250(6.35)	.300(7.62)	26	FPH12701-S26SXXX4XXB	1.250(31.75)	1.300(33.02)
7	FPH12701-S07SXXX4XXB	.300(7.62)	.350(8.89)	27	FPH12701-S27SXXX4XXB	1.300(33.02)	1.350(34.29)
8	FPH12701-S08SXXX4XXB	.350(8.89)	.400(10.16)	28	FPH12701-S28SXXX4XXB	1.350(34.29)	1.400(35.56)
9	FPH12701-S09SXXX4XXB	.400(10.16)	.450(11.43)	29	FPH12701-S29SXXX4XXB	1.400(35.56)	1.450(36.83)
10	FPH12701-S10SXXX4XXB	.450(11.43)	.500(12.70)	30	FPH12701-S30SXXX4XXB	1.450(36.83)	1.500(38.10)
11	FPH12701-S11SXXX4XXB	.500(12.70)	.550(13.97)	31	FPH12701-S31SXXX4XXB	1.500(38.10)	1.550(39.37)
12	FPH12701-S12SXXX4XXB	.550(13.97)	.600(15.24)	32	FPH12701-S32SXXX4XXB	1.550(39.37)	1.600(40.64)
13	FPH12701-S13SXXX4XXB	.600(15.24)	.650(16.51)	33	FPH12701-S33SXXX4XXB	1.600(40.64)	1.650(41.91)
14	FPH12701-S14SXXX4XXB	.650(16.51)	.700(17.78)	34	FPH12701-S34SXXX4XXB	1.650(41.91)	1.700(43.18)
15	FPH12701-S15SXXX4XXB	.700(17.78)	.750(19.05)	35	FPH12701-S35SXXX4XXB	1.700(43.18)	1.750(44.45)
16	FPH12701-S16SXXX4XXB	.750(19.05)	.800(20.32)	36	FPH12701-S36SXXX4XXB	1.750(44.45)	1.800(45.72)
17	FPH12701-S17SXXX4XXB	.800(20.32)	.850(21.59)	37	FPH12701-S37SXXX4XXB	1.800(45.72)	1.850(46.99)
18	FPH12701-S18SXXX4XXB	.850(21.59)	.900(22.86)	38	FPH12701-S38SXXX4XXB	1.850(46.99)	1.900(48.26)
19	FPH12701-S19SXXX4XXB	.900(22.86)	.950(24.13)	39	FPH12701-S39SXXX4XXB	1.900(48.26)	1.950(49.53)
20	FPH12701-S20SXXX4XXB	.950(24.13)	1.00(25.40)	40	FPH12701-S40SXXX4XXB	1.950(49.53)	2.000(50.80)

 THIRD ANGLE PROJECTION	GENERAL TOLERANCES (UNLESS SPECIFIED)		APPROVE BY	DATE	PART NO.	ITEM NO.	 Leader Of Industry	
	X.±.012(0.30)	X.±5'	FRANK	13/JUN/16	FPH12701-SXXSXXX4XXB	FPH12701		
	X.X±.008(0.20)	.X'±2'	CHECKED BY	DATE	TITLE			
	X.XX±.006(0.15)	.XX±1'	CHERRY	13/JUN/16	Board to Board(Pin Header) Pitch 1.27mm 180° Vertical(DIP)			
SCALE	SIZE	X.XXX±.004(0.10)	.XXX±0.5'	DRAWN BY	DATE	THIS DRAWING CONTAINS INFORMATION THAT IS PROPRIETARY TO TXGA INDUSTRIAL ELECTRONICS(S.Z)CO.,LTD AND SHOULD NOT BE USED WITHOUT WRITTEN PERMISSION	REV 0	SHEET NO. 4/4
5:1	A4			JACOB	13/JUN/16			