

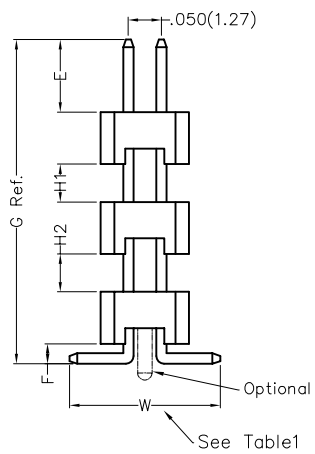
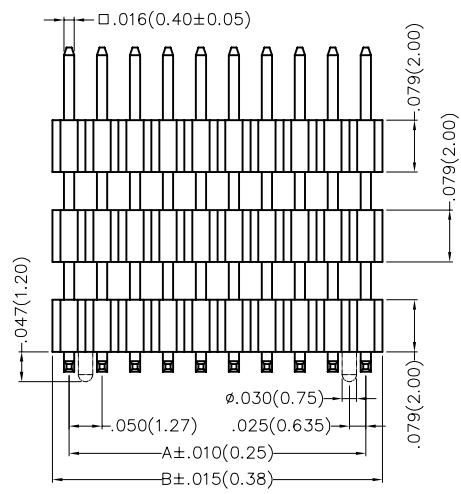
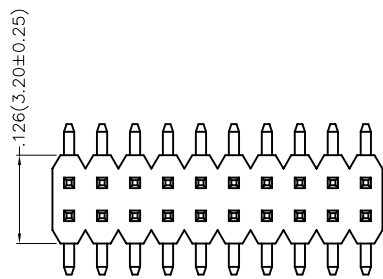
1 2 3 4 5 6 7 8

REV	LOCATIONS	DESCRIPTION	DATE	REVISER	APPD

**SPECIFICATIONS**

**Electrical**  
 Current Rating: 1.0A AC(rms)/DC  
 Voltage Rating: 250V AC(rms)/DC  
 Contact Resistance: 20 mΩ Max  
 Insulation Resistance: 1000 MΩ Min  
 Withstanding Voltage: 600V AC r.m.s  
 Temperature Range—Operating: -40°C~+105°C

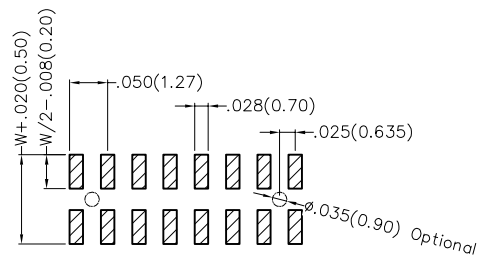
**Material and Plating**  
 Housing: Glass Filled Polyester (UL 94V-0), Color: Black  
 Pin: Brass  
 Pin Plating: Gold plated/ Selective gold in contact area, tin on tail



**Ordering Information**

FPH 127 04 - D XX S X XX 4 XX M X  
 1 2 3 4 5 6 7 8 9 10 11 12

1 Category FPH-Pin Header	2 Series Number 127-Pitch 1.27mm	3 Distinction No. 04	4 Row Option D-Double Row	5 Circuits XX	6 Entry Angle S-180° Vertical
7 Plating 1-Gold plated 3-Selective gold in contact area, tin on tail	8 Thickness of Plating 01-1μ" 15-15μ" Custom plate available	9 Material-Resin 4-PA6T	10 Size 01,02... -Serial number (See Table 1) Custom length available	11 Packaging M-Reel	12 Type A-W/O Column B-With Column



Recommended P.C.Board Layout

<p>THIRD ANGLE PROJECTION</p>	GENERAL TOLERANCES (UNLESS SPECIFIED) X.±.012(0.30) X'.±5' X.X±.008(0.20) .X'±2' X.XX±.006(0.15) .XX'±1' X.XXX±.004(0.10) .XXX'±0.5'		APPROVE BY FRANK DATE 02/JUN/16	PART NO. FPH12704-DXXSXX4XXMX	ITEM NO. FPH12704	<p>Leader Of Industry</p>
	DESIGN UNITS Inch (metric) SCALE 5:1	SIZE A4	CHECKED BY CHERRY DATE 02/JUN/16	DATE 02/JUN/16	TITLE Board to Board(Pin Header) Pitch 1.27mm 180° Vertical(SMT)	
THIS DRAWING CONTAINS INFORMATION THAT IS PROPRIETARY TO TXGA INDUSTRIAL ELECTRONICS(S.Z)CO.,LTD AND SHOULD NOT BE USED WITHOUT WRITTEN PERMISSION						

1 2 3 4 5 6 7 8



1 2 3 4 5 6 7 8

REV	LOCATIONS	DESCRIPTION	DATE	REVISER	APPD

A

A

B

B

C

C

D

D

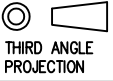

E

E

F

F

Circuits (n)	Part No.	Dimensions(in/mm)		Circuits (n)	Part No.	Dimensions(in/mm)	
		A	B			A	B
4	FPH12704-D04SXXX4XXMX	.050(1.27)	.100(2.54)	44	FPH12704-D44SXXX4XXMX	1.050(26.67)	1.100(27.94)
6	FPH12704-D06SXXX4XXMX	.100(2.54)	.150(3.81)	46	FPH12704-D46SXXX4XXMX	1.100(27.94)	1.150(29.21)
8	FPH12704-D08SXXX4XXMX	.150(3.81)	.200(5.08)	48	FPH12704-D48SXXX4XXMX	1.150(29.21)	1.200(30.48)
10	FPH12704-D10SXXX4XXMX	.200(5.08)	.250(6.35)	50	FPH12704-D50SXXX4XXMX	1.200(30.48)	1.250(31.75)
12	FPH12704-D12SXXX4XXMX	.250(6.35)	.300(7.62)	52	FPH12704-D52SXXX4XXMX	1.250(31.75)	1.300(33.02)
14	FPH12704-D14SXXX4XXMX	.300(7.62)	.350(8.89)	54	FPH12704-D54SXXX4XXMX	1.300(33.02)	1.350(34.29)
16	FPH12704-D16SXXX4XXMX	.350(8.89)	.400(10.16)	56	FPH12704-D56SXXX4XXMX	1.350(34.29)	1.400(35.56)
18	FPH12704-D18SXXX4XXMX	.400(10.16)	.450(11.43)	58	FPH12704-D58SXXX4XXMX	1.400(35.56)	1.450(36.83)
20	FPH12704-D20SXXX4XXMX	.450(11.43)	.500(12.70)	60	FPH12704-D60SXXX4XXMX	1.450(36.83)	1.500(38.10)
22	FPH12704-D22SXXX4XXMX	.500(12.70)	.550(13.97)	62	FPH12704-D62SXXX4XXMX	1.500(38.10)	1.550(39.37)
24	FPH12704-D24SXXX4XXMX	.550(13.97)	.600(15.24)	64	FPH12704-D64SXXX4XXMX	1.550(39.37)	1.600(40.64)
26	FPH12704-D26SXXX4XXMX	.600(15.24)	.650(16.51)	66	FPH12704-D66SXXX4XXMX	1.600(40.64)	1.650(41.91)
28	FPH12704-D28SXXX4XXMX	.650(16.51)	.700(17.78)	68	FPH12704-D68SXXX4XXMX	1.650(41.91)	1.700(43.18)
30	FPH12704-D30SXXX4XXMX	.700(17.78)	.750(19.05)	70	FPH12704-D70SXXX4XXMX	1.700(43.18)	1.750(44.45)
32	FPH12704-D32SXXX4XXMX	.750(19.05)	.800(20.32)	72	FPH12704-D72SXXX4XXMX	1.750(44.45)	1.800(45.72)
34	FPH12704-D34SXXX4XXMX	.800(20.32)	.850(21.59)	74	FPH12704-D74SXXX4XXMX	1.800(45.72)	1.850(46.99)
36	FPH12704-D36SXXX4XXMX	.850(21.59)	.900(22.86)	76	FPH12704-D76SXXX4XXMX	1.850(46.99)	1.900(48.26)
38	FPH12704-D38SXXX4XXMX	.900(22.86)	.950(24.13)	78	FPH12704-D78SXXX4XXMX	1.900(48.26)	1.950(49.53)
40	FPH12704-D40SXXX4XXMX	.950(24.13)	1.000(25.40)	80	FPH12704-D80SXXX4XXMX	1.950(49.53)	2.000(50.80)
42	FPH12704-D42SXXX4XXMX	1.000(25.40)	1.050(26.67)	100	FPH12704-D100SXXX4XXMX	2.450(62.23)	2.500(63.50)

 THIRD ANGLE PROJECTION	GENERAL TOLERANCES (UNLESS SPECIFIED)		APPROVE BY	DATE	PART NO.	ITEM NO.	 Leader Of Industry
	X.±.012(0.30)	X'.±5'	FRANK	02/JUN/16	FPH12704-DXXSXXX4XXMX	FPH12704	
	X.X±.008(0.20)	.X'±2'	CHECKED BY	DATE	TITLE		
	X.XX±.006(0.15)	.XX'±1'	CHERRY	02/JUN/16	Board to Board(Pin Header) Pitch 1.27mm 180° Vertical(SMT)		
SCALE	SIZE	X.XXX±.004(0.10)	.XXX'±0.5'	DRAWN BY	DATE	THIS DRAWING CONTAINS INFORMATION THAT IS PROPRIETARY TO TXGA INDUSTRIAL ELECTRONICS(S.Z)CO.,LTD AND SHOULD NOT BE USED WITHOUT WRITTEN PERMISSION	
5:1	A4			KATE	02/JUN/16	REV 0	SHEET NO. 3/3

1 2 3 4 5 6 7 8