

REV	LOCATIONS	DESCRIPTION	DATE	REVISER	APPD

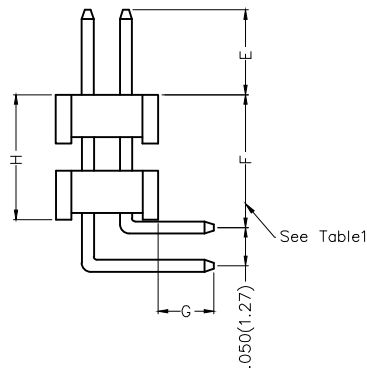
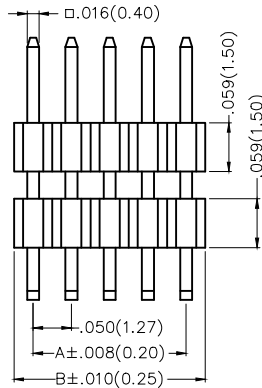
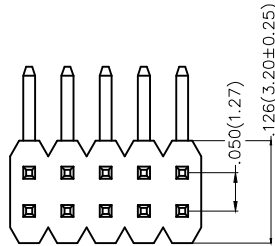
SPECIFICATIONS

Electrical

Current Rating: 1.0A AC(rms)/DC
Voltage Rating: 250V AC(rms)/DC
Contact Resistance: 20 mΩ Max
Insulation Resistance: 1000 MΩ Min
Withstanding Voltage: 600V AC r.m.s
Temperature Range—Operating: -40°C~+105°C

Material and Plating

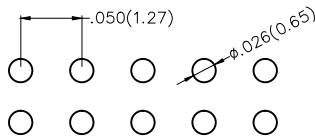
Housing: Glass Filled Polyester (UL 94V-0), Color: Black
Pin: Brass
Pin Plating: Gold plated/ Selective gold in contact area, bright tin on tail




Ordering Information

FPH 127 23 - D XX B X XX 4 XX B
1 2 3 4 5 6 7 8 9 10 11

1 <u>Category</u> FPH-Pin Header	2 <u>Series Number</u> 127-Pitch1.27mm	3 <u>Distinction No.</u> 23	4 <u>Row Option</u> D-Double Row	5 <u>Circuits</u> XX	6 <u>Entry Angle</u> B-90° Angle
7 <u>Plating</u> 1-Gold plated 3-Selective gold in contact area, bright tin on tail	8 <u>Thickness of Plating</u> 01-1μ" 15-15μ" Custom plate available	9 <u>Material-Resin</u> 4-PA6T	10 <u>Size</u> 01,02... -Serial number (See Table1) Custom length available	11 <u>Packaging</u> B-PE Bag	





Recommended P.C.Board Layout

THIRD ANGLE PROJECTION	GENERAL TOLERANCES (UNLESS SPECIFIED)		APPROVE BY FRANK	DATE 25/JUN/13	PART NO. FPH12723-DXXBXXX4XXB	ITEM NO. FPH12723	 Leader Of Industry	
	DESIGN UNITS Inch (metric)	X.±.012(0.30) X.X±.008(0.20) X.XX±.006(0.15) X.XXX±.004(0.10)	X.±5" .X'±2" .XX'±1" .XXX'±0.5'	CHECKED BY CHERRY	DATE 25/JUN/13	TITLE Board to Board(Pin Header) Pitch 1.27mm 90° Angle(DIP)		REV 0
SCALE 5:1	SIZE A4	DRAWN BY JACOB		DATE 25/JUN/13	THIS DRAWING CONTAINS INFORMATION THAT IS PROPRIETARY TO TXGA INDUSTRIAL ELECTRONICS(S.Z.)CO.,LTD AND SHOULD NOT BE USED WITHOUT WRITTEN PERMISSION			

REV	LOCATIONS	DESCRIPTION	DATE	REVISER	APPD

Circuits (n)	Part No.	Dimensions(in/mm)		Circuits (n)	Part No.	Dimensions(in/mm)	
		A	B			A	B
2	FPH12723-D02BXXX4XXB	—	.050(1.27)	42	FPH12723-D42BXXX4XXB	1.000(25.40)	1.050(26.67)
4	FPH12723-D04BXXX4XXB	.050(1.27)	.100(2.54)	44	FPH12723-D44BXXX4XXB	1.050(26.67)	1.100(27.94)
6	FPH12723-D06BXXX4XXB	.100(2.54)	.150(3.81)	46	FPH12723-D46BXXX4XXB	1.100(27.94)	1.150(29.21)
8	FPH12723-D08BXXX4XXB	.150(3.81)	.200(5.08)	48	FPH12723-D48BXXX4XXB	1.150(29.21)	1.200(30.48)
10	FPH12723-D10BXXX4XXB	.200(5.08)	.250(6.35)	50	FPH12723-D50BXXX4XXB	1.200(30.48)	1.250(31.75)
12	FPH12723-D12BXXX4XXB	.250(6.35)	.300(7.62)	52	FPH12723-D52BXXX4XXB	1.250(31.75)	1.300(33.02)
14	FPH12723-D14BXXX4XXB	.300(7.62)	.350(8.89)	54	FPH12723-D54BXXX4XXB	1.300(33.02)	1.350(34.29)
16	FPH12723-D16BXXX4XXB	.350(8.89)	.400(10.16)	56	FPH12723-D56BXXX4XXB	1.350(34.29)	1.400(35.56)
18	FPH12723-D18BXXX4XXB	.400(10.16)	.450(11.43)	58	FPH12723-D58BXXX4XXB	1.400(35.56)	1.450(36.83)
20	FPH12723-D20BXXX4XXB	.450(11.43)	.500(12.70)	60	FPH12723-D60BXXX4XXB	1.450(36.83)	1.500(38.10)
22	FPH12723-D22BXXX4XXB	.500(12.70)	.550(13.97)	62	FPH12723-D62BXXX4XXB	1.500(38.10)	1.550(39.37)
24	FPH12723-D24BXXX4XXB	.550(13.97)	.600(15.24)	64	FPH12723-D64BXXX4XXB	1.550(39.37)	1.600(40.64)
26	FPH12723-D26BXXX4XXB	.600(15.24)	.650(16.51)	66	FPH12723-D66BXXX4XXB	1.600(40.64)	1.650(41.91)
28	FPH12723-D28BXXX4XXB	.650(16.51)	.700(17.78)	68	FPH12723-D68BXXX4XXB	1.650(41.91)	1.700(43.18)
30	FPH12723-D30BXXX4XXB	.700(17.78)	.750(19.05)	70	FPH12723-D70BXXX4XXB	1.700(43.18)	1.750(44.45)
32	FPH12723-D32BXXX4XXB	.750(19.05)	.800(20.32)	72	FPH12723-D72BXXX4XXB	1.750(44.45)	1.800(45.72)
34	FPH12723-D34BXXX4XXB	.800(20.32)	.850(21.59)	74	FPH12723-D74BXXX4XXB	1.800(45.72)	1.850(46.99)
36	FPH12723-D36BXXX4XXB	.850(21.59)	.900(22.86)	76	FPH12723-D76BXXX4XXB	1.850(46.99)	1.900(48.26)
38	FPH12723-D38BXXX4XXB	.900(22.86)	.950(24.13)	78	FPH12723-D78BXXX4XXB	1.900(48.26)	1.950(49.53)
40	FPH12723-D40BXXX4XXB	.950(24.13)	1.00(25.40)	80	FPH12723-D80BXXX4XXB	1.950(49.53)	2.000(50.80)

 THIRD ANGLE PROJECTION	GENERAL TOLERANCES (UNLESS SPECIFIED)		APPROVE BY FRANK	DATE 25/JUN/13	PART NO. FPH12723-DXXBXXX4XXB	ITEM NO. FPH12723	 Leader Of Industry			
	DESIGN UNITS Inch (metric)	X.±.012(0.30)	X.±5'	CHECKED BY CHERRY	DATE 25/JUN/13	TITLE Board to Board(Pin Header) Pitch 1.27mm 90° Angle(DIP)		REV 0	SHEET NO. 3/3	
		SCALE 5:1	SIZE A4	X.XX±.006(0.15)	.XX±1'	DRAWN BY JACOB		DATE 25/JUN/13	THIS DRAWING CONTAINS INFORMATION THAT IS PROPRIETARY TO TXGA INDUSTRIAL ELECTRONICS(S.Z)CO.,LTD AND SHOULD NOT BE USED WITHOUT WRITTEN PERMISSION	