

REV	LOCATIONS	DESCRIPTION	DATE	REVISER	APPD

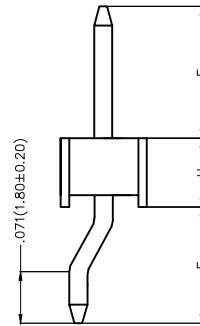
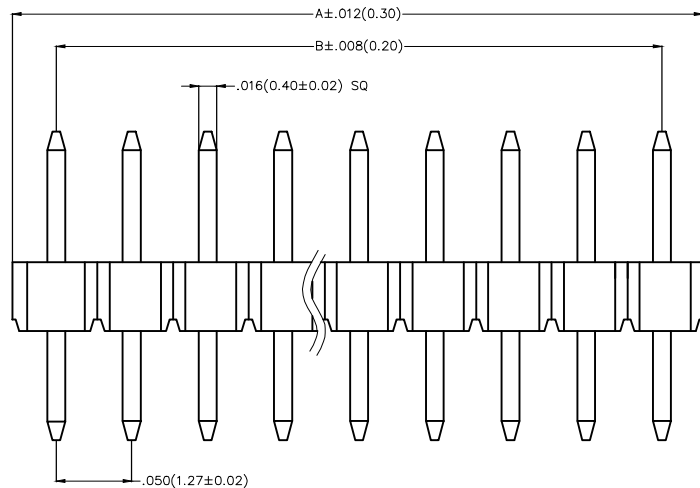
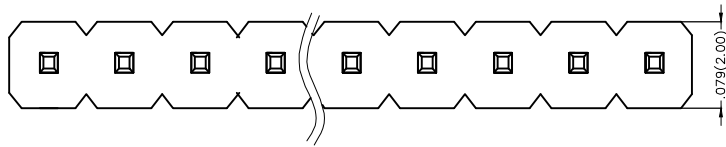
**SPECIFICATIONS**

**Electrical**

Current Rating: 1.0A AC(rms)/DC  
Voltage Rating: 250V AC(rms)/DC  
Contact Resistance: 20 mΩ Max  
Insulation Resistance: 1000 MΩ Min  
Withstanding Voltage: 600V AC r.m.s  
Temperature Range—Operating: -40°C~+105°C

**Material and Plating**

Housing: Glass Filled Polyester (UL 94V-0), Color: Black  
Pin: Brass  
Pin Plating: Gold plated/ Selective gold in contact area, bright tin on tail



**Ordering Information**

FPH 127 25 - S XX B X XX 4 XX M  
1 2 3 4 5 6 7 8 9 10 11

1 <u>Category</u> FPH—Pin Header	2 <u>Series Number</u> 127—Pitch1.27mm	3 <u>Distinction No.</u> 25	4 <u>Row Option</u> S—Single Row	5 <u>Circuits</u> XX	6 <u>Entry Angle</u> B—90° Angle
7 <u>Plating</u> 1—Gold plated 3—Selective gold in contact area, bright tin on tail	8 <u>Thickness of Plating</u> 01—1μ" 15—15μ" Custom plate available	9 <u>Material—Resin</u> 4—PA6T	10 <u>Size</u> 01,02... —Serial number (See Table1) Custom length available	11 <u>Packaging</u> M—Reel	



Recommended P.C.Board Layout

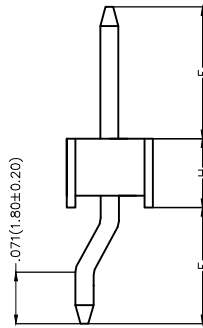
Tolerances: ±.002(0.05)

 <b>THIRD ANGLE PROJECTION</b>	GENERAL TOLERANCES (UNLESS SPECIFIED)		APPROVE BY VERNON	DATE 11/AUG/17	PART NO. FPH12725-SXXBXXX4XXM	ITEM NO. FPH12725	 <b>TXGA</b> Leader Of Industry	
	X.±.012(0.30)	X'.±5'	CHECKED BY KATE	DATE 11/AUG/17	TITLE Board to Board(Pin Header) Pitch 1.27mm 90° Vertical(SMT)			REV 0
	DESIGN UNITS Inch (metric)	X.X±.008(0.20)	X'±2'	DRAWN BY LXF	DATE 11/AUG/17	THIS DRAWING CONTAINS INFORMATION THAT IS PROPRIETARY TO TXGA INDUSTRIAL ELECTRONICS(S.Z)CO.,LTD AND SHOULD NOT BE USED WITHOUT WRITTEN PERMISSION		
	SCALE 5:1	SIZE A4	X.XX±.006(0.15)	X'±1'	X.XXX±.004(0.10)	X'±0.5'		

REV	LOCATIONS	DESCRIPTION	DATE	REVISER	APPD	

Table1



Serial number	Dimensions(in/mm)			Canceled Circuits	Note
	E	F	H		
01	.154(3.90)	.110(2.80)	.059(1.50)	—	
02	.157(4.00)	.134(3.40)	.039(1.00)	—	



 THIRD ANGLE PROJECTION	GENERAL TOLERANCES (UNLESS SPECIFIED)		APPROVE BY VERNON	DATE 11/AUG/17	PART NO. FPH12725-SXXBXXX4XXM	ITEM NO. FPH12725	 Leader Of Industry
	DESIGN UNITS Inch (metric)	X.±.012(0.30)	X.±5'	CHECKED BY KATE	DATE 11/AUG/17	TITLE Board to Board(Pin Header) Pitch 1.27mm 90° Vertical(SMT)	
SCALE 5:1	SIZE A4	X.XX±.008(0.20)	X.±2'	DRAWN BY LXF	DATE 11/AUG/17	THIS DRAWING CONTAINS INFORMATION THAT IS PROPRIETARY TO TXGA INDUSTRIAL ELECTRONICS(S.Z)CO.,LTD AND SHOULD NOT BE USED WITHOUT WRITTEN PERMISSION	
		X.XX±.006(0.15)	.XX±1'			REV 0	SHEET NO. 2/3
		X.XXX±.004(0.10)	.XXX±0.5'				

REV	LOCATIONS	DESCRIPTION	DATE	REVISER	APPD

Circuits (n)	Part No.	Dimensions(in/mm)		Circuits (n)	Part No.	Dimensions(in/mm)	
		A	B			A	B
1	FPH12725-S01BXXX4XXM	.050(1.27)	--	21	FPH12725-S21BXXX4XXM	1.050(26.67)	1.000(25.40)
2	FPH12725-S02BXXX4XXM	.100(2.54)	.100(1.27)	22	FPH12725-S22BXXX4XXM	1.100(27.94)	1.050(26.67)
3	FPH12725-S03BXXX4XXM	.150(3.81)	.100(2.54)	23	FPH12725-S23BXXX4XXM	1.150(29.21)	1.100(27.94)
4	FPH12725-S04BXXX4XXM	.200(5.08)	.150(3.81)	24	FPH12725-S24BXXX4XXM	1.200(30.48)	1.150(29.21)
5	FPH12725-S05BXXX4XXM	.250(6.35)	.200(2.54)	25	FPH12725-S25BXXX4XXM	1.250(31.75)	1.200(30.48)
6	FPH12725-S06BXXX4XXM	.300(7.62)	.250(5.08)	26	FPH12725-S26BXXX4XXM	1.300(33.02)	1.250(31.75)
7	FPH12725-S07BXXX4XXM	.350(8.89)	.300(7.62)	27	FPH12725-S27BXXX4XXM	1.350(34.29)	1.300(33.02)
8	FPH12725-S08BXXX4XXM	.400(10.16)	.350(8.89)	28	FPH12725-S28BXXX4XXM	1.400(35.56)	1.350(34.29)
9	FPH12725-S09BXXX4XXM	.450(11.43)	.400(10.16)	29	FPH12725-S29BXXX4XXM	1.450(36.83)	1.400(35.56)
10	FPH12725-S10BXXX4XXM	.500(12.70)	.450(11.43)	30	FPH12725-S30BXXX4XXM	1.500(38.10)	1.450(36.83)
11	FPH12725-S11BXXX4XXM	.550(13.97)	.500(12.70)	31	FPH12725-S31BXXX4XXM	1.550(39.37)	1.500(38.10)
12	FPH12725-S12BXXX4XXM	.600(15.24)	.550(13.97)	32	FPH12725-S32BXXX4XXM	1.600(40.64)	1.550(39.37)
13	FPH12725-S13BXXX4XXM	.650(16.51)	.600(15.24)	33	FPH12725-S33BXXX4XXM	1.650(41.91)	1.600(40.64)
14	FPH12725-S14BXXX4XXM	.700(17.78)	.650(16.51)	34	FPH12725-S34BXXX4XXM	1.700(43.18)	1.650(41.91)
15	FPH12725-S15BXXX4XXM	.750(19.05)	.700(17.78)	35	FPH12725-S35BXXX4XXM	1.750(44.45)	1.700(43.18)
16	FPH12725-S16BXXX4XXM	.800(20.32)	.750(19.05)	36	FPH12725-S36BXXX4XXM	1.800(45.72)	1.750(44.45)
17	FPH12725-S17BXXX4XXM	.850(21.59)	.800(20.32)	37	FPH12725-S37BXXX4XXM	1.850(46.99)	1.800(45.72)
18	FPH12725-S18BXXX4XXM	.900(22.86)	.850(21.59)	38	FPH12725-S38BXXX4XXM	1.900(48.26)	1.850(46.99)
19	FPH12725-S19BXXX4XXM	.950(24.13)	.900(22.86)	39	FPH12725-S39BXXX4XXM	1.950(49.53)	1.900(48.26)
20	FPH12725-S20BXXX4XXM	1.000(25.40)	.950(24.13)	40	FPH12725-S40BXXX4XXM	2.000(50.80)	1.950(49.53)

 THIRD ANGLE PROJECTION	GENERAL TOLERANCES (UNLESS SPECIFIED)		APPROVE BY VERNON	DATE 11/AUG/17	PART NO. FPH12725-SXXBXXX4XXM	ITEM NO. FPH12725	 Leader Of Industry	
	X.±.012(0.30)	X.'±5'	CHECKED BY KATE	DATE 11/AUG/17	TITLE Board to Board(Pin Header) Pitch 1.27mm 90° Vertical(SMT)			REV 0
	DESIGN UNITS Inch (metric)	X.X±.008(0.20)	X'±2'	DRAWN BY LXF	DATE 11/AUG/17	THIS DRAWING CONTAINS INFORMATION THAT IS PROPRIETARY TO TXGA INDUSTRIAL ELECTRONICS(S.Z)CO.,LTD AND SHOULD NOT BE USED WITHOUT WRITTEN PERMISSION		
	SCALE 5:1	SIZE A4	X.XX±.006(0.15)	X.XX±1'	X.XXX±.004(0.10)	X.XX±0.5'		