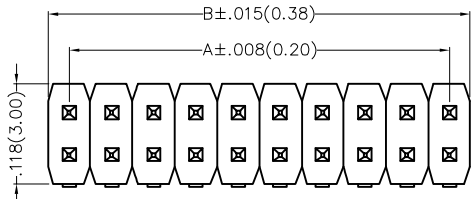


1 2 3 4 5

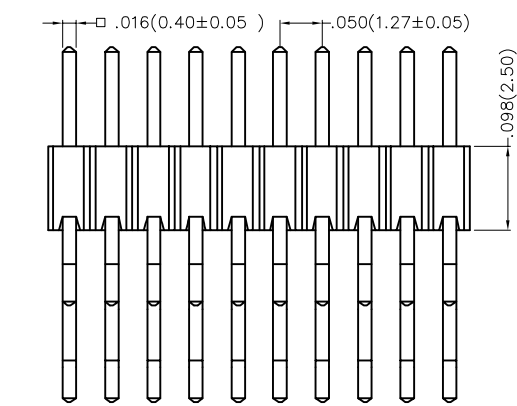
6 7 8

REV	LOCATIONS	DESCRIPTION	DATE	REVISER	APPD

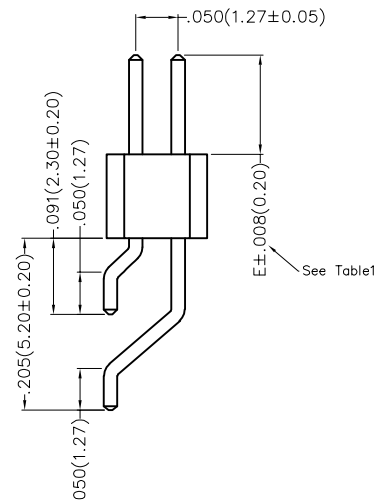
A



B

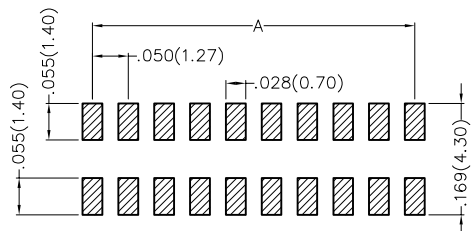


C



D

E



Recommended P.C.Board Layout

F

SPECIFICATIONS

Electrical

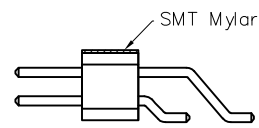
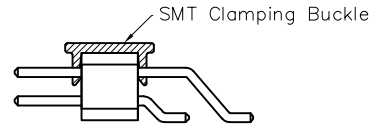
- Current Rating: 1.0A AC(rms)/DC
- Voltage Rating: 250V AC(rms)/DC
- Contact Resistance: 20 mΩ Max
- Insulation Resistance: 1000 MΩ Min
- Withstanding Voltage: 600V AC r.m.s
- Temperature Range-Operating: -40°C~+105°C

Material and Plating

- Housing: Glass Filled Polyester (UL 94V-0), Color: Black
- Pin: Brass
- Pin Plating: Gold plated/ Selective gold plated on contact area and 120μ" Min. matte tin plated on tails area

Packaging: M-Reel(With Cap)

Packaging: W-Reel(With Mylar)



Ordering Information

FPH 127 43 - D XX B X XX 4 XX 00 00 X
 1 2 3 4 5 6 7 8 9 10 11

1 Category FPH-Pin Header	2 Series Number 127-Pitch1.27mm	3 Distinction No. 44	4 Row Option D-Double Row	5 Circuits XX	6 Entry Angle B-90° Angle
7 Plating 1-Gold plated 7-Selective gold plated on contact area and matte tin plated on tails area	8 Thickness of Plating 01-1μ" 15-15μ" Custom plate available	9 Material-Resin 4-PA6T	10 E Size 01,02...-Serial number (See Table1)	11 Packaging M-Reel(With Cap) W-Reel(With Mylar)	

<p>THIRD ANGLE PROJECTION</p>	GENERAL TOLERANCES (UNLESS SPECIFIED)		APPROVE BY FRANK	DATE 17/DEC/19	PART NO. FPH12743-DXXBXXX4XX0000X	ITEM NO. FPH12743	<p>Leader Of Industry</p>
	X.±.012(0.30)	X.±5'	CHECKED BY CHERRY	DATE 17/DEC/19	TITLE Board to Board(Pin Header) Pitch 1.27mm 90° Angle(SMT)		
DESIGN UNITS Inch (metric)	X.X±.008(0.20)	.X'±2'	DRAWN BY ZOEY	DATE 17/DEC/19	THIS DRAWING CONTAINS INFORMATION THAT IS PROPRIETARY TO TXGA INDUSTRIAL ELECTRONICS(S.Z)CO.,LTD AND SHOULD NOT BE USED WITHOUT WRITTEN PERMISSION		REV 0
SCALE 5:1	SIZE A4	X.XXX±.004(0.10)					SHEET NO. 1/3

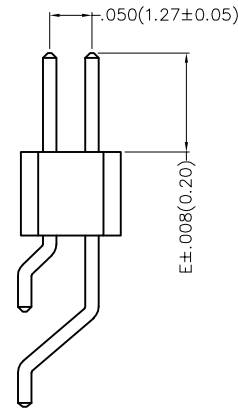
1 2 3 4 5

6 7 8

REV	LOCATIONS	DESCRIPTION	DATE	REVISER	APPD

Table1

Serial number	Dimensions(in/mm) E	Serial number	Dimensions(in/mm) E
01	.059(1.50)	19	.236(6.00)
02	.069(1.75)	20	.246(6.25)
03	.079(2.00)	21	.256(6.50)
04	.089(2.25)	22	.266(6.75)
05	.098(2.50)	23	.276(7.00)
06	.108(2.75)	24	.285(7.25)
07	.118(3.00)	25	.295(7.50)
08	.128(3.25)	26	.305(7.75)
09	.138(3.50)	27	.315(8.00)
10	.148(3.75)	28	.325(8.25)
11	.157(4.00)	29	.335(8.50)
12	.167(4.25)	30	.344(8.75)
13	.177(4.50)	31	.354(9.00)
14	.187(4.75)	32	.364(9.25)
15	.197(5.00)	33	.374(9.50)
16	.207(5.25)	34	.384(9.75)
17	.217(5.50)	35	.394(10.00)
18	.226(5.75)	36	



 THIRD ANGLE PROJECTION	GENERAL TOLERANCES (UNLESS SPECIFIED)		APPROVE BY FRANK	DATE 17/DEC/19	PART NO. FPH12743-DXXBXX4XX0000X	ITEM NO. FPH12743	 Leader Of Industry
	X.±.012(0.30)	X:±5'	CHECKED BY CHERRY	DATE 17/DEC/19	TITLE Board to Board(Pin Header) Pitch 1.27mm 90° Angle(SMT)		
DESIGN UNITS Inch (metric)	X.X±.008(0.20)	.X'±2'	DRAWN BY KATE	DATE 17/DEC/19	THIS DRAWING CONTAINS INFORMATION THAT IS PROPRIETARY TO TXGA INDUSTRIAL ELECTRONICS(S.Z)CO.,LTD AND SHOULD NOT BE USED WITHOUT WRITTEN PERMISSION		
SCALE 5:1	SIZE A4	X.XXX±.004(0.10)	.XX'±1'	X.XXX±0.5'			

1 2 3 4 5 6 7 8

REV	LOCATIONS	DESCRIPTION	DATE	REVISER	APPD

A

A

B

B

C

C

D

D



E

E

F

F

Circuits (n)	Part No.	Dimensions(in/mm)		Circuits (n)	Part No.	Dimensions(in/mm)	
		A	B			A	B
4	FPH12743-D04BXXX4XX0000X	.050(1.27)	.100(2.54)	54	FPH12743-D54BXXX4XX0000X	1.300(33.02)	1.350(34.29)
6	FPH12743-D06BXXX4XX0000X	.100(2.54)	.150(3.81)	56	FPH12743-D56BXXX4XX0000X	1.350(34.29)	1.400(35.56)
8	FPH12743-D08BXXX4XX0000X	.150(3.81)	.200(5.08)	58	FPH12743-D58BXXX4XX0000X	1.400(35.56)	1.450(36.83)
10	FPH12743-D10BXXX4XX0000X	.200(5.08)	.250(6.35)	60	FPH12743-D60BXXX4XX0000X	1.450(36.83)	1.500(38.10)
12	FPH12743-D12BXXX4XX0000X	.250(6.35)	.300(7.62)	62	FPH12743-D62BXXX4XX0000X	1.500(38.10)	1.550(39.37)
14	FPH12743-D14BXXX4XX0000X	.300(7.62)	.350(8.89)	64	FPH12743-D64BXXX4XX0000X	1.550(39.37)	1.600(40.64)
16	FPH12743-D16BXXX4XX0000X	.350(8.89)	.400(10.16)	66	FPH12743-D66BXXX4XX0000X	1.600(40.64)	1.650(41.91)
18	FPH12743-D18BXXX4XX0000X	.400(10.16)	.450(11.43)	68	FPH12743-D68BXXX4XX0000X	1.650(41.91)	1.700(43.18)
20	FPH12743-D20BXXX4XX0000X	.450(11.43)	.500(12.70)	70	FPH12743-D70BXXX4XX0000X	1.700(43.18)	1.750(44.45)
22	FPH12743-D22BXXX4XX0000X	.500(12.70)	.550(13.97)	72	FPH12743-D72BXXX4XX0000X	1.750(44.45)	1.800(45.72)
24	FPH12743-D24BXXX4XX0000X	.550(13.97)	.600(15.24)	74	FPH12743-D74BXXX4XX0000X	1.800(45.72)	1.850(46.99)
26	FPH12743-D26BXXX4XX0000X	.600(15.24)	.650(16.51)	76	FPH12743-D76BXXX4XX0000X	1.850(46.99)	1.900(48.26)
28	FPH12743-D28BXXX4XX0000X	.650(16.51)	.700(17.78)	78	FPH12743-D78BXXX4XX0000X	1.900(48.26)	1.950(49.53)
30	FPH12743-D30BXXX4XX0000X	.700(17.78)	.750(19.05)	80	FPH12743-D80BXXX4XX0000X	1.950(49.53)	2.000(50.80)
32	FPH12743-D32BXXX4XX0000X	.750(19.05)	.800(20.32)	82	FPH12743-D82BXXX4XX0000X	2.000(50.80)	2.050(52.07)
34	FPH12743-D34BXXX4XX0000X	.800(20.32)	.850(21.59)	84	FPH12743-D84BXXX4XX0000X	2.050(52.07)	2.100(53.34)
36	FPH12743-D36BXXX4XX0000X	.850(21.59)	.900(22.86)	86	FPH12743-D86BXXX4XX0000X	2.100(53.34)	2.150(54.61)
38	FPH12743-D38BXXX4XX0000X	.900(22.86)	.950(24.13)	88	FPH12743-D88BXXX4XX0000X	2.150(54.61)	2.200(55.88)
40	FPH12743-D40BXXX4XX0000X	.950(24.13)	1.000(25.40)	90	FPH12743-D90BXXX4XX0000X	2.200(55.88)	2.250(57.15)
42	FPH12743-D42BXXX4XX0000X	1.000(25.40)	1.050(26.67)	92	FPH12743-D92BXXX4XX0000X	2.250(57.15)	2.300(58.42)
44	FPH12743-D44BXXX4XX0000X	1.050(26.67)	1.100(27.94)	94	FPH12743-D94BXXX4XX0000X	2.300(58.42)	2.350(59.69)
46	FPH12743-D46BXXX4XX0000X	1.100(27.94)	1.150(29.21)	96	FPH12743-D96BXXX4XX0000X	2.350(59.69)	2.400(60.96)
48	FPH12743-D48BXXX4XX0000X	1.150(29.21)	1.200(30.48)	98	FPH12743-D98BXXX4XX0000X	2.400(60.96)	2.450(62.23)
50	FPH12743-D50BXXX4XX0000X	1.200(30.48)	1.250(31.75)	100	FPH12743-D100BXXX4XX0000X	2.450(62.23)	2.500(63.50)
52	FPH12743-D52BXXX4XX0000X	1.250(31.75)	1.300(33.02)				

 THIRD ANGLE PROJECTION	GENERAL TOLERANCES (UNLESS SPECIFIED)		APPROVE BY FRANK	DATE 17/DEC/19	PART NO. FPH12743-DXXBXXX4XX0000X	ITEM NO. FPH12743	 Leader Of Industry
	DESIGN UNITS Inch (metric)	X.±.012(0.30)	X.±5'	CHECKED BY CHERRY	DATE 17/DEC/19	TITLE Board to Board(Pin Header) Pitch 1.27mm 90° Angle(SMT)	
SCALE 5:1		SIZE A4	X.XX±.006(0.15)	.XX'±1'	DRAWN BY ZOEY	DATE 17/DEC/19	THIS DRAWING CONTAINS INFORMATION THAT IS PROPRIETARY TO TXGA INDUSTRIAL ELECTRONICS(S.Z)CO.,LTD AND SHOULD NOT BE USED WITHOUT WRITTEN PERMISSION

1 2 3 4 5 6 7 8