

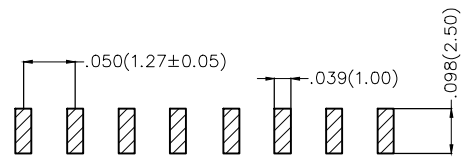
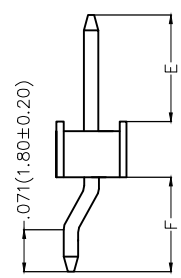
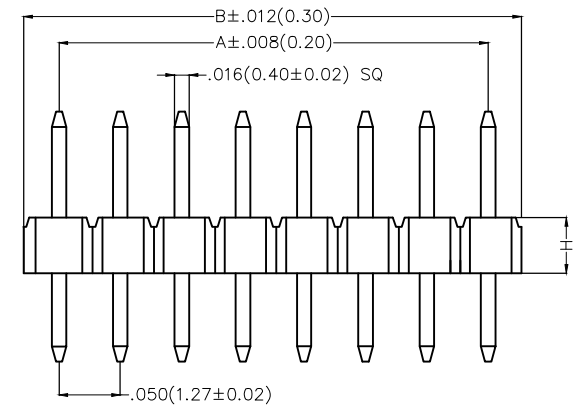
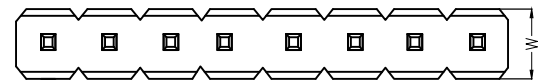
1		2		3		4		5		6		7		8	
Dimensions(in/mm)										REV	LOCATIONS	DESCRIPTION	DATE	REVISER	APPD

H		W	
.039(1.00)		.079(2.00)	
.059(1.50)			
.079(2.00)			
.098(2.50)			

SPECIFICATIONS

Electrical
 Current Rating:1.0A AC(rms)/DC
 Voltage Rating:250V AC(rms)/DC
 Contact Resistance:20 mΩ Max
 Insulation Resistance:1000 MΩ Min
 Withstanding Voltage:600V AC r.m.s
 Temperature Range-Operating:-40°C~+105°C

Material and Plating
 Housing:Glass Filled Polyester (UL 94V-0), Color: Black
 Pin:Brass
 Pin Plating: Gold plated/ Selective gold plated on contact area and 120μ" Min. matte tin plated on tails area



Recommended P.C.Board Layout
 Tolerances: ±.002(0.05)

Ordering Information

FPH 127 52 - S XX B X XX X XX XX X 0 M
 1 2 3 4 5 6 7 8 9 10 11 12 13

1 <u>Category</u> FPH-Pin Header	2 <u>Series Number</u> 127-Pitch1.27mm	3 <u>Distinction No.</u> 52	4 <u>Row Option</u> S-Single Row	5 <u>Circuits</u> XX	6 <u>Entry Angle</u> B-90° Angle	7 <u>Plating</u> 1-Gold plated 7-Selective gold plated on contact area and matte tin plated on tails area
8 <u>Thickness of Plating</u> 01-1μ" 15-15μ" Custom plate available	9 <u>Material-Resin</u> 3-LCP 4-PA6T	10 <u>E Size</u> 01,02...-Serial number (See Table1)	11 <u>F Size</u> 01,02...-Serial number (See Table1)	12 <u>H Size</u> 1,2...-Serial number (See Table1)	13 <u>Packaging</u> M-Reel	

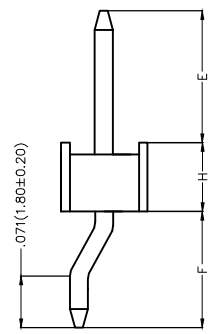
 THIRD ANGLE PROJECTION DESIGN UNITS Inch (metric) SCALE 5:1 SIZE A4	GENERAL TOLERANCES (UNLESS SPECIFIED)		APPROVE BY VERNON	DATE 17/DEC/19	PART NO. FPH12752-SXXBXXXXXXXXXX0M	ITEM NO. FPH12752	 Leader Of Industry	
	X±.012(0.30)	.X'±5'	CHECKED BY KATE	DATE 17/DEC/19	TITLE Board to Board(Pin Header) Pitch 1.27mm 90° Vertical(SMT)			REV 0
	X.XX±.006(0.15)	.XX'±1"	DRAWN BY ZOEY	DATE 17/DEC/19	THIS DRAWING CONTAINS INFORMATION THAT IS PROPRIETARY TO TXGA INDUSTRIAL ELECTRONICS(S.Z)CO.,LTD AND SHOULD NOT BE USED WITHOUT WRITTEN PERMISSION			
	X.XXX±.004(0.10)	.XXX'±0.5'						

REV	LOCATIONS	DESCRIPTION	DATE	REVISER	APPD

Table1

Serial number	Dimensions(in/mm) E	Serial number	Dimensions(in/mm) E
01	.059(1.50)	19	.236(6.00)
02	.069(1.75)	20	.246(6.25)
03	.079(2.00)	21	.256(6.50)
04	.089(2.25)	22	.266(6.75)
05	.098(2.50)	23	.276(7.00)
06	.108(2.75)	24	.285(7.25)
07	.118(3.00)	25	.295(7.50)
08	.128(3.25)	26	.305(7.75)
09	.138(3.50)	27	.315(8.00)
10	.148(3.75)	28	.325(8.25)
11	.157(4.00)	29	.335(8.50)
12	.167(4.25)	30	.344(8.75)
13	.177(4.50)	31	.354(9.00)
14	.187(4.75)	32	.364(9.25)
15	.197(5.00)	33	.374(9.50)
16	.207(5.25)	34	.384(9.75)
17	.217(5.50)	35	.394(10.00)
18	.226(5.75)		

Serial number	Dimensions(in/mm) F	Serial number	Dimensions(in/mm) F
01	.110(2.80)	19	.252(6.40)
02	.118(3.00)	20	.260(6.60)
03	.126(3.20)	21	.268(6.80)
04	.134(3.40)	22	.276(7.00)
05	.142(3.60)	23	.283(7.20)
06	.150(3.80)	24	.291(7.40)
07	.157(4.00)	25	.299(7.60)
08	.165(4.20)	26	.307(7.80)
09	.173(4.40)	27	.315(8.00)
10	.181(4.60)	28	.323(8.20)
11	.189(4.80)	29	.331(8.40)
12	.197(5.00)	30	.339(8.60)
13	.205(5.20)	31	.346(8.80)
14	.213(5.40)	32	.354(9.00)
15	.220(5.60)	33	.362(9.20)
16	.228(5.80)	34	.370(9.40)
17	.236(6.00)	35	.378(9.60)
18	.244(6.20)	36	.386(9.80)



Serial number	Dimensions(in/mm) H
1	.039(1.00)
2	.059(1.50)
3	.079(2.00)
4	.098(2.50)

 THIRD ANGLE PROJECTION	GENERAL TOLERANCES (UNLESS SPECIFIED)		APPROVE BY VERNON	DATE 17/DEC/19	PART NO. FPH12752-SXXBXXXXXXXXX0M	ITEM NO. FPH12742	 Leader Of Industry	
	DESIGN UNITS Inch (metric)	X.±.012(0.30)	.X'±5'	CHECKED BY KATE	DATE 17/DEC/19	TITLE Board to Board(Pin Header) Pitch 1.27mm 90° Vertical(SMT)		REV 0
	SCALE 5:1	SIZE A4	X.XX±.008(0.20)	.X'±2'	DRAWN BY ZOEY	DATE 17/DEC/19	THIS DRAWING CONTAINS INFORMATION THAT IS PROPRIETARY TO TXGA INDUSTRIAL ELECTRONICS(S.Z)CO.,LTD AND SHOULD NOT BE USED WITHOUT WRITTEN PERMISSION	
			X.XX±.006(0.15)	.XX'±1'				

1 2 3 4 5 6 7 8

REV	LOCATIONS	DESCRIPTION	DATE	REVISER	APPD

A

A

B

B

C

C

D

D



E

E

F

F

Circuits (n)	Part No.	Dimensions(in/mm)		Circuits (n)	Part No.	Dimensions(in/mm)	
		A	B			A	B
1	FPH12752-S01BXXXXXXXXXOM	--	.050(1.27)	21	FPH12752-S21BXXXXXXXXXOM	1.000(25.40)	1.050(26.67)
2	FPH12752-S02BXXXXXXXXXOM	.100(1.27)	.100(2.54)	22	FPH12752-S22BXXXXXXXXXOM	1.050(26.67)	1.100(27.94)
3	FPH12752-S03BXXXXXXXXXOM	.100(2.54)	.150(3.81)	23	FPH12752-S23BXXXXXXXXXOM	1.100(27.94)	1.150(29.21)
4	FPH12752-S04BXXXXXXXXXOM	.150(3.81)	.200(5.08)	24	FPH12752-S24BXXXXXXXXXOM	1.150(29.21)	1.200(30.48)
5	FPH12752-S05BXXXXXXXXXOM	.200(2.54)	.250(6.35)	25	FPH12752-S25BXXXXXXXXXOM	1.200(30.48)	1.250(31.75)
6	FPH12752-S06BXXXXXXXXXOM	.250(5.08)	.300(7.62)	26	FPH12752-S26BXXXXXXXXXOM	1.250(31.75)	1.300(33.02)
7	FPH12752-S07BXXXXXXXXXOM	.300(7.62)	.350(8.89)	27	FPH12752-S27BXXXXXXXXXOM	1.300(33.02)	1.350(34.29)
8	FPH12752-S08BXXXXXXXXXOM	.350(8.89)	.400(10.16)	28	FPH12752-S28BXXXXXXXXXOM	1.350(34.29)	1.400(35.56)
9	FPH12752-S09BXXXXXXXXXOM	.400(10.16)	.450(11.43)	29	FPH12752-S29BXXXXXXXXXOM	1.400(35.56)	1.450(36.83)
10	FPH12752-S10BXXXXXXXXXOM	.450(11.43)	.500(12.70)	30	FPH12752-S30BXXXXXXXXXOM	1.450(36.83)	1.500(38.10)
11	FPH12752-S11BXXXXXXXXXOM	.500(12.70)	.550(13.97)	31	FPH12752-S31BXXXXXXXXXOM	1.500(38.10)	1.550(39.37)
12	FPH12752-S12BXXXXXXXXXOM	.550(13.97)	.600(15.24)	32	FPH12752-S32BXXXXXXXXXOM	1.550(39.37)	1.600(40.64)
13	FPH12752-S13BXXXXXXXXXOM	.600(15.24)	.650(16.51)	33	FPH12752-S33BXXXXXXXXXOM	1.600(40.64)	1.650(41.91)
14	FPH12752-S14BXXXXXXXXXOM	.650(16.51)	.700(17.78)	34	FPH12752-S34BXXXXXXXXXOM	1.650(41.91)	1.700(43.18)
15	FPH12752-S15BXXXXXXXXXOM	.700(17.78)	.750(19.05)	35	FPH12752-S35BXXXXXXXXXOM	1.700(43.18)	1.750(44.45)
16	FPH12752-S16BXXXXXXXXXOM	.750(19.05)	.800(20.32)	36	FPH12752-S36BXXXXXXXXXOM	1.750(44.45)	1.800(45.72)
17	FPH12752-S17BXXXXXXXXXOM	.800(20.32)	.850(21.59)	37	FPH12752-S37BXXXXXXXXXOM	1.800(45.72)	1.850(46.99)
18	FPH12752-S18BXXXXXXXXXOM	.850(21.59)	.900(22.86)	38	FPH12752-S38BXXXXXXXXXOM	1.850(46.99)	1.900(48.26)
19	FPH12752-S19BXXXXXXXXXOM	.900(22.86)	.950(24.13)	39	FPH12752-S39BXXXXXXXXXOM	1.900(48.26)	1.950(49.53)
20	FPH12752-S20BXXXXXXXXXOM	.950(24.13)	1.000(25.40)	40	FPH12752-S40BXXXXXXXXXOM	1.950(49.53)	2.000(50.80)

 THIRD ANGLE PROJECTION	GENERAL TOLERANCES (UNLESS SPECIFIED)		APPROVE BY VERNON	DATE 17/DEC/19	PART NO. FPH12752-SXXBXXXXXXXXXOM	ITEM NO. FPH12742	 Leader Of Industry	
	X.±.012(0.30)	X.±5'	CHECKED BY KATE	DATE 17/DEC/19	TITLE Board to Board(Pin Header) Pitch 1.27mm 90° Vertical(SMT)			REV 0
	DESIGN UNITS Inch (metric)	X.X±.008(0.20)	.X'±2'	DRAWN BY ZOEY	DATE 17/DEC/19	THIS DRAWING CONTAINS INFORMATION THAT IS PROPRIETARY TO TXGA INDUSTRIAL ELECTRONICS(S.Z)CO.,LTD AND SHOULD NOT BE USED WITHOUT WRITTEN PERMISSION		
	SCALE 5:1	SIZE A4	X.XX±.006(0.15)	.XX'±1'	X.XXX±.004(0.10)	.XXX'±0.5'		

1 2 3 4 5 6 7 8