

REV	LOCATIONS	DESCRIPTION	DATE	REVISER	APPD

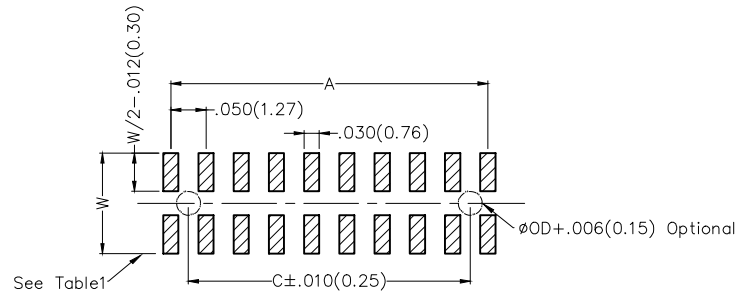
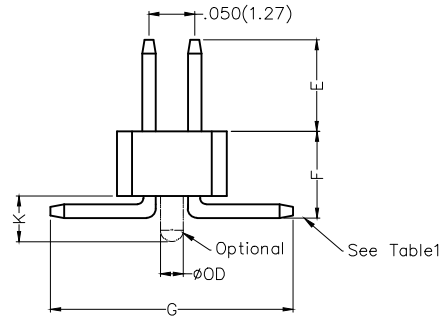
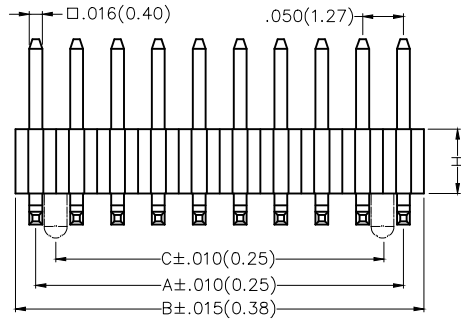
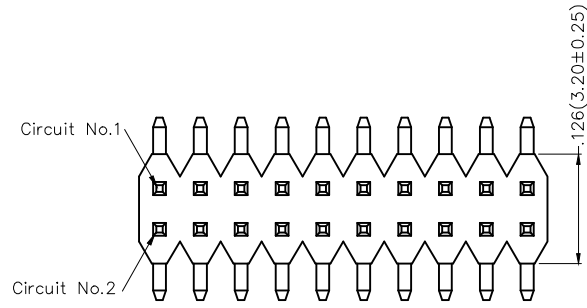
SPECIFICATIONS

Electrical

- Current Rating: 1.0A AC(rms)/DC
- Voltage Rating: 250V AC(rms)/DC
- Contact Resistance: 20 mΩ Max
- Insulation Resistance: 1000 MΩ Min
- Withstanding Voltage: 600V AC r.m.s
- Temperature Range—Operating: -40°C~+105°C

Material and Plating

- Housing: Glass Filled Polyester (UL 94V-0), Color: Black
- Pin: Brass
- Pin Plating: Gold plated/ Selective gold in contact area, tin on tail



Recommended P.C.Board Layout

Ordering Information

FPH	127	S2	D	XX	S	X	XX	X	XX	M	X
1	2	3	4	5	6	7	8	9	10	11	12

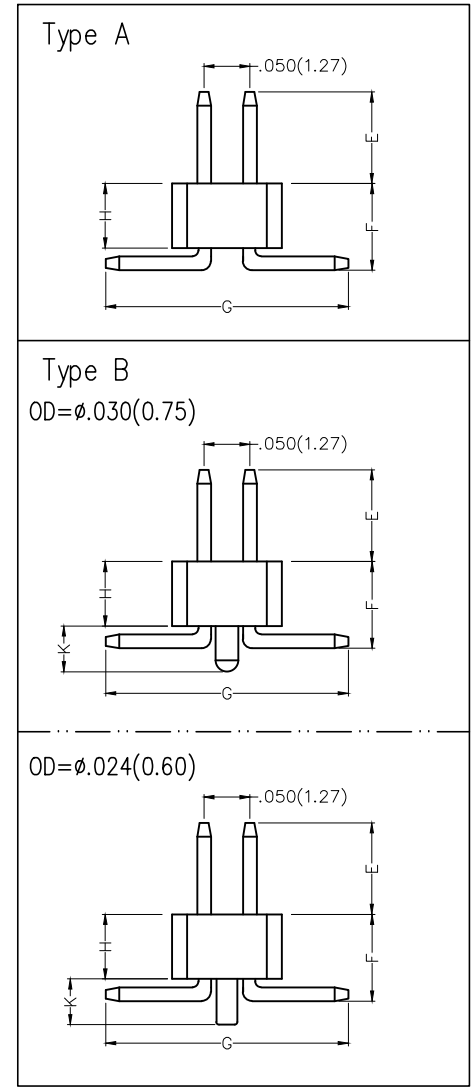
1 <u>Category</u> FPH—Pin Header	2 <u>Series Number</u> 127—Pitch 1.27mm	3 <u>Distinction No.</u> S2	4 <u>Row Option</u> D—Double Row	5 <u>Circuits</u> XX	6 <u>Entry Angle</u> S—180° Vertical
-------------------------------------	--------------------------------------------	--------------------------------	-------------------------------------	-------------------------	-----------------------------------------

7 <u>Plating</u> 1—Gold plated 3—Selective gold in contact area, tin on tail	8 <u>Thickness of Plating</u> 01—1μ" 15—15μ" Custom plate available	9 <u>Material—Resin</u> 3—LCP 4—PA6T 5—PA9T	10 <u>Size</u> 01,02... —Serial number (See Table1) Custom length available	11 <u>Packaging</u> M—Reel	12 <u>Type</u> A—W/O Column B—With Column
------------------------------------------------------------------------------------	------------------------------------------------------------------------------	------------------------------------------------------	-----------------------------------------------------------------------------------	-------------------------------	-------------------------------------------------

<p>THIRD ANGLE PROJECTION</p>	<p>GENERAL TOLERANCES (UNLESS SPECIFIED)</p>		<p>APPROVE BY FRANK</p>	<p>DATE 22/MAY/14</p>	<p>PART NO. FPH127S2-DXXSXXXXXXMX</p>	<p>ITEM NO. FPH127S2</p>	<p>Leader Of Industry</p>	
	<p>DESIGN UNITS Inch (metric)</p>	<p>X.±.012(0.30)</p>	<p>X.'±5'</p>	<p>CHECKED BY CHERRY</p>	<p>DATE 22/MAY/14</p>	<p>TITLE Board to Board(Pin Header) Pitch 1.27mm 180° Vertical(SMT)</p>		<p>REV 0</p>
<p>SCALE 5:1</p>	<p>SIZE A4</p>	<p>X.XX±.008(0.20)</p>	<p>X'±2'</p>	<p>DRAWN BY JACOB</p>	<p>DATE 22/MAY/14</p>	<p>THIS DRAWING CONTAINS INFORMATION THAT IS PROPRIETARY TO TXGA INDUSTRIAL ELECTRONICS(S.Z)CO.,LTD AND SHOULD NOT BE USED WITHOUT WRITTEN PERMISSION</p>		

Serial number	Dimensions(in/mm)							Type	Canceled Circuits	Note
	E	F	G	H	W	K	OD			
01	.118(3.00)	.059(1.50)	.217(5.50)	.039(1.00)	.232(5.90)	.059(1.50)	.030(0.75)	A B	—	
02	.118(3.00)	.106(2.70)	.220(5.60)	.059(1.50)	.236(6.00)	.059(1.50)	.030(0.75)	A B	—	
03	.157(4.00)	.079(2.00)	.220(5.60)	.059(1.50)	.236(6.00)	.059(1.50)	.030(0.75)	A B	—	
04	.098(2.00)	.055(1.40)	.176(4.47)	.039(1.00)	.192(4.87)	.059(1.50)	.030(0.75)	A B	—	
05										
06	.118(3.00)	.059(1.50)	.217(5.50)	.039(1.00)	.232(5.90)	.059(1.50)	.030(0.75)	A	—	
07	.120(3.05)	.114(2.90)	.217(5.50)	.098(2.50)	.232(5.90)	.047(1.20)	.030(0.75)	A	—	
08	.071(1.80)	.106(2.70)	.220(5.60)	.059(1.50)	.236(6.00)	.059(1.50)	.030(0.75)	A B	—	
09	.335(8.50)	.106(2.70)	.220(5.60)	.059(1.50)	.236(6.00)	.059(1.50)	.030(0.75)	A	—	
10	.138(3.50)	.118(3.00)	.220(5.60)	.079(2.00)	.236(6.00)	.047(1.20)	.030(0.75)	A B	—	
11	.118(3.00)	.118(3.00)	.217(5.50)	.098(2.50)	.256(6.50)	.047(1.20)	.030(0.75)	B	—	
12	.110(2.80)	.106(2.70)	.228(5.80)	.059(1.50)	.244(6.20)	.059(1.50)	.030(0.75)	A B	—	
13	.071(1.80)	.059(1.50)	.217(5.50)	.039(1.00)	.232(5.90)	.059(1.50)	.030(0.75)	A B	—	
14	.110(2.80)	.079(2.00)	.228(5.80)	.059(1.50)	.244(6.20)	.059(1.50)	.030(0.75)	B	—	
15	.118(3.00)	.083(2.10)	.217(5.50)	.059(1.50)	.232(5.90)	.059(1.50)	.030(0.75)	B	—	
16	.120(3.05)	.114(2.92)	.228(5.80)	.098(2.50)	.256(6.50)	.047(1.20)	.030(0.75)	A	—	
17	.118(3.00)	.670(1.70)	.217(5.50)	.039(1.00)	.256(6.50)	.059(1.50)	.030(0.75)	A B	—	
18	.118(4.00)	.670(3.50)	.217(5.50)	.039(1.00)	.232(5.90)	.059(1.50)	.030(0.75)	B	—	
19	.150(3.80)	.082(2.10)	.201(5.10)	.059(1.50)	.232(5.50)	.059(1.50)	.030(0.75)	A B	—	
20	.125(3.18)	.150(3.80)	.296(7.52)	.098(2.5)	.335(8.52)	.047(1.20)	.030(0.75)	A B	—	
21	.071(1.80)	.106(2.70)	.220(5.60)	.079(2.00)	.236(6.00)	.039(1.00)	.030(0.75)	B	—	
22	.118(3.00)	.087(2.20)	.217(5.50)	.059(1.50)	.232(5.90)	.059(1.50)	.030(0.75)	A B	—	
23	.071(1.80)	.075(1.90)	.217(5.50)	.039(1.00)	.232(5.90)	.059(1.50)	.030(0.75)	A B	—	
24	.118(3.00)	.059(1.50)	.217(5.50)	.059(1.50)	.232(5.90)	.059(1.50)	.030(0.75)	A B	—	
25	.079(2.00)	.079(2.00)	.217(5.50)	.059(1.50)	.232(5.90)	.059(1.50)	.030(0.75)	B	—	

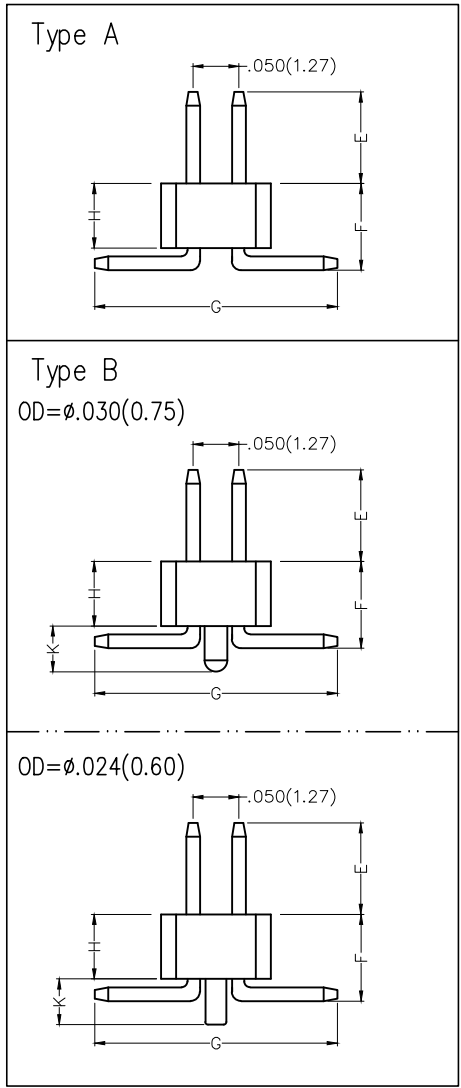
REV	LOCATIONS	DESCRIPTION	DATE	REVISER	APPD



<p>THIRD ANGLE PROJECTION</p>	GENERAL TOLERANCES (UNLESS SPECIFIED)		APPROVE BY	DATE	PART NO.	ITEM NO.	<p>Leader Of Industry</p>		
	X.±.012(0.30)	X.'±5'	FRANK	22/MAY/14	FPH127S2-DXXSXXX4XXMX	FPH127S2			
	DESIGN UNITS Inch (metric)	X.X±.008(0.20)	X'±2'	CHECKED BY	DATE	TITLE		REV 0	SHEET NO. 2/4
	SCALE 5:1	X.XX±.006(0.15)	.XX'±1"	CHERRY	22/MAY/14	Board to Board(Pin Header) Pitch 1.27mm 180° Vertical(SMT)		THIS DRAWING CONTAINS INFORMATION THAT IS PROPRIETARY TO TXGA INDUSTRIAL ELECTRONICS(S.Z)CO.,LTD AND SHOULD NOT BE USED WITHOUT WRITTEN PERMISSION	
	X.XXX±.004(0.10)	.XXX±0.5'	DRAWN BY	DATE					
			JACOB	22/MAY/14					

Serial number	Dimensions(in/mm)							Type	Canceled Circuits	Note
	E	F	G	H	W	K	OD			
26	.110(2.80)	.118(3.00)	.220(5.60)	.079(2.00)	.236(6.00)	.047(1.20)	.030(0.75)	A	No.2	Only 6Circuits
27	.083(2.10)	.094(2.40)	.220(5.60)	.079(2.00)	.232(5.90)	.047(1.20)	.030(0.75)	A	—	
28	.118(3.00)	.079(2.00)	.201(5.10)	.059(1.50)	.232(5.90)	.059(1.50)	.030(0.75)	B	—	
29	.130(3.30)	.106(2.70)	.217(5.50)	.079(2.00)	.232(5.90)	.047(1.20)	.024(0.60)	B	—	
30	.118(3.00)	.177(4.50)	.217(5.50)	.059(1.50)	.232(5.90)	.059(1.50)	.030(0.75)	B	—	
31	.079(2.00)	.098(2.50)	.217(5.50)	.079(2.00)	.232(5.90)	.047(1.20)	.030(0.75)	A	—	
32	.118(3.00)	.193(4.90)	.220(5.60)	.098(2.50)	.236(6.00)	.047(1.20)	.030(0.75)	A	—	
33	.161(4.10)	.114(2.90)	.220(5.60)	.098(2.50)	.236(6.00)	.047(1.20)	.030(0.75)	A	—	
34	.138(3.50)	.059(1.50)	.201(5.10)	.039(1.00)	.217(5.50)	.059(1.50)	.030(0.75)	A B	—	
35	.315(8.00)	.079(2.00)	.217(5.50)	.059(1.50)	.232(5.90)	.059(1.50)	.030(0.75)	A B	—	
36	.209(5.30)	.075(1.90)	.217(5.50)	.059(1.50)	.232(5.90)	.059(1.50)	.030(0.75)	A B	—	
37	.157(4.00)	.670(1.70)	.209(5.30)	.039(1.00)	.224(5.70)	.059(1.50)	.030(0.75)	A B	—	
38	.157(4.00)	.087(2.20)	.217(5.50)	.059(1.50)	.232(5.90)	.059(1.50)	.030(0.75)	A B	—	
39	.319(8.10)	.094(2.40)	.217(5.50)	.079(2.00)	.232(5.90)	.047(1.20)	.030(0.75)	A B	—	
40	.110(2.80)	.094(2.40)	.228(5.80)	.079(2.00)	.244(6.20)	.047(1.20)	.030(0.75)	A B	—	
41	.236(6.00)	.118(3.00)	.217(5.50)	.059(1.50)	.232(5.90)	.059(1.50)	.030(0.75)	A B	—	
42	.240(6.10)	.075(1.90)	.217(5.50)	.059(1.50)	.232(5.90)	.059(1.50)	.030(0.75)	A B	—	
43	.059(1.50)	.106(2.70)	.217(5.50)	.079(2.00)	.232(5.90)	.047(1.20)	.030(0.75)	A B	No.21-24	Only 46Circuits
44	.059(1.50)	.106(2.70)	.217(5.50)	.079(2.00)	.232(5.90)	.047(1.20)	.030(0.75)	A B	No.21-26	Only 48Circuits
45	.150(3.80)	.116(2.95)	.228(5.80)	.098(2.50)	.244(6.20)	.047(1.20)	.030(0.75)	A B	—	
46	.157(4.00)	.138(3.50)	.217(5.50)	.098(2.50)	.232(5.90)	.047(1.20)	.030(0.75)	A B	—	
47	.157(4.00)	.177(4.50)	.217(5.50)	.098(2.50)	.232(5.90)	.047(1.20)	.030(0.75)	A B	—	
48	.157(4.00)	.157(4.00)	.217(5.50)	.098(2.50)	.232(5.90)	.047(1.20)	.030(0.75)	A B	—	
49	.059(1.50)	.106(2.70)	.217(5.50)	.079(2.00)	.232(5.90)	.047(1.20)	.030(0.75)	A B	—	

REV	LOCATIONS	DESCRIPTION	DATE	REVISER	APPD



 THIRD ANGLE PROJECTION	GENERAL TOLERANCES (UNLESS SPECIFIED)		APPROVE BY	DATE	PART NO.	ITEM NO.	 Leader Of Industry	
	X.±.012(0.30)	X.±5'	FRANK	22/MAY/14	FPH127S2-DXXX4XXMX	FPH127S2		
	DESIGN UNITS Inch (metric)	X.X±.008(0.20)	X.±2'	CHECKED BY	DATE	TITLE		REV 0
	SCALE	X.XX±.006(0.15)	.XX±1'	CHERRY	22/MAY/14	Board to Board(Pin Header) Pitch 1.27mm 180° Vertical(SMT)		SHEET NO. 3/4
SIZE	X.XXX±.004(0.10)	.XXX±0.5'	DRAWN BY	DATE	THIS DRAWING CONTAINS INFORMATION THAT IS PROPRIETARY TO TXGA INDUSTRIAL ELECTRONICS(S.Z)CO.,LTD AND SHOULD NOT BE USED WITHOUT WRITTEN PERMISSION			
5:1	A4		JACOB	22/MAY/14				

1 2 3 4 5 6 7 8

REV	LOCATIONS	DESCRIPTION	DATE	REVISER	APPD

A

A

B

B

C

C

D

D



E

E

F

F

Circuits (n)	Part No.	Dimensions(in/mm)			Circuits (n)	Part No.	Dimensions(in/mm)		
		A	B	C			A	B	C
2	FPH127S2-D02SXXX4XXMX	—	.050(1.27)	—	44	FPH127S2-D44SXXX4XXMX	1.050(26.67)	1.100(27.94)	1.000(25.40)
4	FPH127S2-D04SXXX4XXMX	.050(1.27)	.100(2.54)	—	46	FPH127S2-D46SXXX4XXMX	1.100(27.94)	1.150(29.21)	1.050(26.67)
6	FPH127S2-D06SXXX4XXMX	.100(2.54)	.150(3.81)	.050(1.27)	48	FPH127S2-D48SXXX4XXMX	1.150(29.21)	1.200(30.48)	1.100(27.94)
8	FPH127S2-D08SXXX4XXMX	.150(3.81)	.200(5.08)	.100(2.54)	50	FPH127S2-D50SXXX4XXMX	1.200(30.48)	1.250(31.75)	1.150(29.21)
10	FPH127S2-D10SXXX4XXMX	.200(5.08)	.250(6.35)	.150(3.81)	52	FPH127S2-D52SXXX4XXMX	1.250(31.75)	1.300(33.02)	1.200(30.48)
12	FPH127S2-D12SXXX4XXMX	.250(6.35)	.300(7.62)	.200(5.08)	54	FPH127S2-D54SXXX4XXMX	1.300(33.02)	1.350(34.29)	1.250(31.75)
14	FPH127S2-D14SXXX4XXMX	.300(7.62)	.350(8.89)	.250(6.35)	56	FPH127S2-D56SXXX4XXMX	1.350(34.29)	1.400(35.56)	1.300(33.02)
16	FPH127S2-D16SXXX4XXMX	.350(8.89)	.400(10.16)	.300(7.62)	58	FPH127S2-D58SXXX4XXMX	1.400(35.56)	1.450(36.83)	1.350(34.29)
18	FPH127S2-D18SXXX4XXMX	.400(10.16)	.450(11.43)	.350(8.89)	60	FPH127S2-D60SXXX4XXMX	1.450(36.83)	1.500(38.10)	1.400(35.56)
20	FPH127S2-D20SXXX4XXMX	.450(11.43)	.500(12.70)	.400(10.16)	62	FPH127S2-D62SXXX4XXMX	1.500(38.10)	1.550(39.37)	1.450(36.83)
22	FPH127S2-D22SXXX4XXMX	.500(12.70)	.550(13.97)	.450(11.43)	64	FPH127S2-D64SXXX4XXMX	1.550(39.37)	1.600(40.64)	1.500(38.10)
24	FPH127S2-D24SXXX4XXMX	.550(13.97)	.600(15.24)	.500(12.70)	66	FPH127S2-D66SXXX4XXMX	1.600(40.64)	1.650(41.91)	1.550(39.37)
26	FPH127S2-D26SXXX4XXMX	.600(15.24)	.650(16.51)	.550(13.97)	68	FPH127S2-D68SXXX4XXMX	1.650(41.91)	1.700(43.18)	1.600(40.64)
28	FPH127S2-D28SXXX4XXMX	.650(16.51)	.700(17.78)	.600(15.24)	70	FPH127S2-D70SXXX4XXMX	1.700(43.18)	1.750(44.45)	1.650(41.91)
30	FPH127S2-D30SXXX4XXMX	.700(17.78)	.750(19.05)	.650(16.51)	72	FPH127S2-D72SXXX4XXMX	1.750(44.45)	1.800(45.72)	1.700(43.18)
32	FPH127S2-D32SXXX4XXMX	.750(19.05)	.800(20.32)	.700(17.78)	74	FPH127S2-D74SXXX4XXMX	1.800(45.72)	1.850(46.99)	1.750(44.45)
34	FPH127S2-D34SXXX4XXMX	.800(20.32)	.850(21.59)	.750(19.05)	76	FPH127S2-D76SXXX4XXMX	1.850(46.99)	1.900(48.26)	1.800(45.72)
36	FPH127S2-D36SXXX4XXMX	.850(21.59)	.900(22.86)	.800(20.32)	78	FPH127S2-D78SXXX4XXMX	1.900(48.26)	1.950(49.53)	1.850(46.99)
38	FPH127S2-D38SXXX4XXMX	.900(22.86)	.950(24.13)	.850(21.59)	80	FPH127S2-D80SXXX4XXMX	1.950(49.53)	2.000(50.80)	1.900(48.26)
40	FPH127S2-D40SXXX4XXMX	.950(24.13)	1.00(25.40)	.900(22.86)	100	FPH127S2-D100SXXX4XXMX	2.450(62.23)	2.500(63.50)	2.400(60.96)
42	FPH127S2-D42SXXX4XXMX	1.000(25.40)	1.050(26.67)	.950(24.13)					

 THIRD ANGLE PROJECTION	GENERAL TOLERANCES (UNLESS SPECIFIED)		APPROVE BY	DATE	PART NO.	ITEM NO.	 Leader Of Industry
	X.±.012(0.30)	X.±5'	FRANK	22/MAY/14	FPH127S2-DXXSXXX4XXMX	FPH127S2	
	X.X±.008(0.20)	X.±2'	CHECKED BY	DATE	TITLE	Board to Board(Pin Header) Pitch 1.27mm 180° Vertical(SMT)	
	X.XX±.006(0.15)	.XX±1"	CHERRY	22/MAY/14	REV 0	SHEET NO. 4/4	
SCALE	SIZE	X.XXX±.004(0.10)	X.XX±0.5'	DRAWN BY	DATE	THIS DRAWING CONTAINS INFORMATION THAT IS PROPRIETARY TO TXGA INDUSTRIAL ELECTRONICS(S.Z)CO.,LTD AND SHOULD NOT BE USED WITHOUT WRITTEN PERMISSION	
5:1	A4			JACOB	22/MAY/14		

1 2 3 4 5 6 7 8