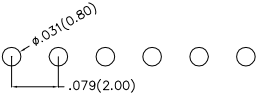
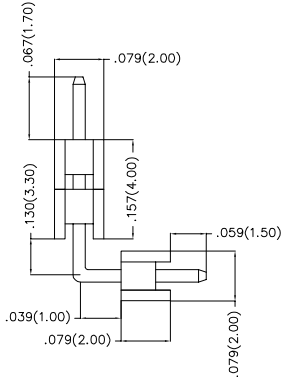
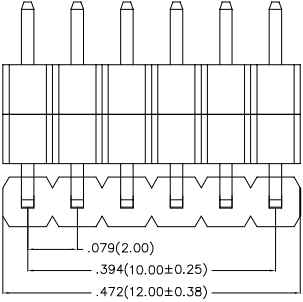
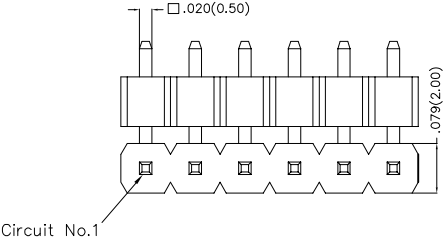


REV	LOCATIONS	DESCRIPTION	DATE	REVISER	APPD

SPECIFICATIONS

Electrical
 Current Rating: 2.0A AC(rms)/DC
 Voltage Rating: 250V AC(rms)/DC
 Contact Resistance: 20 mΩMax
 Insulation Resistance: 1000 MΩ MIN
 Withstanding Voltage: 600V AC r.m.s
 Temperature Range—Operating: -40°C~+105°C

Material
 Housing: Glass Filled Polyester(UL 94V-0) ,Colour: Black
 Pin: Brass



Recommended P.C.Board Layout

Ordering Information

FPH 200 35 - S 06 B 1 00 4 01 B
 1 2 3 4 5 6 7 8 9 10 11

1	Series Name FPH-Pin Header	2	Series Number 200-Pitch2.00mm	3	Distinction No. 35	4	Entry Type S-Single Row	5	Circuits XX	6	Contact Alignment B-Side entry type
7	Plating 1-Gold Plated All 3-Half Gold/Tin	8	Thickness of Gold Plating 00-Gold Flash 05-5u"; 15-15u" 30-30u" Custom Plate Available	9	Plastic 1-PBT 4-PA6T	10	Pin Length(E/F) Serial number: 01,02... E/F/G: Custom length Available(See Table1)	11	Packaging B-PE Bag		

 THIRD ANGLE PROJECTION	GENERAL TOLERANCES (UNLESS SPECIFIED)		APPROVE BY FRANK	DATE 25/JUN/13	PART NO. FPH20035-S06B100401B	ITEM NO. FPH20035	 Leader Of Industry
	X.±.012(0.30)	X.±5°	CHECKED BY CHERRY	DATE 25/JUN/13	TITLE PIN HEADER PITCH:.079 (2.00mm)' Series		
DESIGN UNITS Inch (metric)	X.X±.008(0.20)	.X'±2'	DRAWN BY JACOB	DATE 25/JUN/13	THIS DRAWING CONTAINS INFORMATION THAT IS PROPRIETARY TO TXGA INDUSTRIAL ELECTRONICS(S.Z)CO.,LTD AND SHOULD NOT BE USED WITHOUT WRITTEN PERMISSION		
SCALE 5:1	SIZE A4	X.XX±.006(0.15)	X.XX'±1'	X.XXX±.004(0.10)	X.XX'±0.5°		