

REV	LOCATIONS	DESCRIPTION	DATE	REVISER	APPD

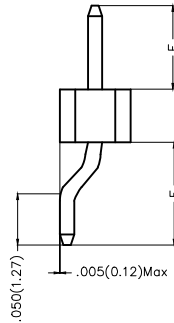
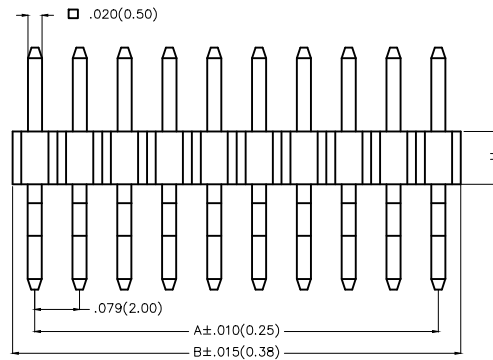
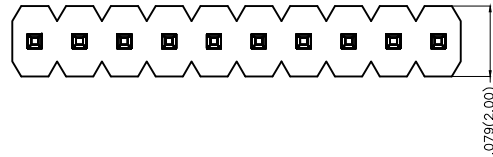
SPECIFICATIONS

Electrical

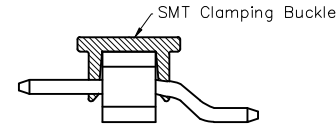
Current Rating: 2.0A AC(rms)/DC
Voltage Rating: 250V AC(rms)/DC
Contact Resistance: 20 mΩ Max
Insulation Resistance: 1000 MΩ Min
Withstanding Voltage: 600V AC r.m.s
Temperature Range—Operating: -40°C~+105°C

Material

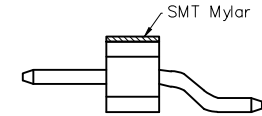
Housing: Glass Filled Polyester (UL 94V-0), Color: Black
Pin: Brass
Pin Plating: Gold plated/ Selective gold plated on contact area and 120μ" Min. matte tin plated on tails area



Packaging: M—Reel(With Cap)



Packaging: W—Reel(With Mylar)
(Only for H=.079(2.00))

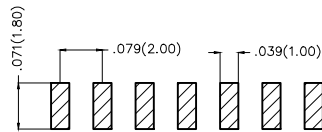


Ordering Information

FPH 200 63 — S XX B X XX 4 XX XX X 0 X
1 2 3 4 5 6 7 8 9 10 11 12 13

1 Category FPH—Pin Header	2 Series Number 200—Pitch2.00mm	3 Distinction No. 63	4 Row Option S—Single Row	5 Circuits XX	6 Entry Angle B—90° Angle	7 Plating 1—Gold plated 7—Selective gold plated on contact area and matte tin plated on tails area
8 Thickness of Plating 01—1μ" 15—15μ" Custom plate available	9 Material—Resin 4—PA6T	10 E Size 01,02...—Serial number (See Table1)	11 F Size 01,02...—Serial number (See Table1)	12 H Size 1,2...—Serial number (See Table1)	13 Packaging M—Reel(With Cap) W—Reel(With Mylar)	

Recommended P.C.Board Layout



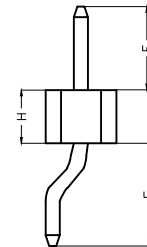
 THIRD ANGLE PROJECTION	GENERAL TOLERANCES (UNLESS SPECIFIED)		APPROVE BY FRANK	DATE 23/DEC/19	PART NO. FPH20063—SXXBXX4XXXXXX0X	ITEM NO. FPH20063	 TXGA Leader Of Industry
	DESIGN UNITS Inch (metric)	X.±.012(0.30)	X.'±5'	CHECKED BY CHERRY	DATE 23/DEC/19	TITLE Board to Board(Pin Header) Pitch 2.00mm 90° Angle(SMT)	
SCALE 5:1	SIZE A4	X.XX±.006(0.15)	.XX'±1'	DRAWN BY ZOEY	DATE 23/DEC/19	THIS DRAWING CONTAINS INFORMATION THAT IS PROPRIETARY TO TXGA INDUSTRIAL ELECTRONICS(S.Z)CO.,LTD AND SHOULD NOT BE USED WITHOUT WRITTEN PERMISSION	
		X.XXX±.004(0.10)	.XXX'±0.5'			REV 0	SHEET NO. 1/3

REV	LOCATIONS	DESCRIPTION	DATE	REVISER	APPD

Table1

Serial number	Dimensions(in/mm) E	Serial number	Dimensions(in/mm) E
01	.059(1.50)	19	.236(6.00)
02	.069(1.75)	20	.246(6.25)
03	.079(2.00)	21	.256(6.50)
04	.089(2.25)	22	.266(6.75)
05	.098(2.50)	23	.276(7.00)
06	.108(2.75)	24	.285(7.25)
07	.118(3.00)	25	.295(7.50)
08	.128(3.25)	26	.305(7.75)
09	.138(3.50)	27	.315(8.00)
10	.148(3.75)	28	.325(8.25)
11	.157(4.00)	29	.335(8.50)
12	.167(4.25)	30	.344(8.75)
13	.177(4.50)	31	.354(9.00)
14	.187(4.75)	32	.364(9.25)
15	.197(5.00)	33	.374(9.50)
16	.207(5.25)	34	.384(9.75)
17	.217(5.50)	35	.394(10.00)
18	.226(5.75)		

Serial number	Dimensions(in/mm) F	Serial number	Dimensions(in/mm) F
01	.089(2.25)	19	.266(6.75)
02	.098(2.50)	20	.276(7.00)
03	.108(2.75)	21	.285(7.25)
04	.118(3.00)	22	.295(7.50)
05	.128(3.25)	23	.305(7.75)
06	.138(3.50)	24	.315(8.00)
07	.148(3.75)	25	.325(8.25)
08	.157(4.00)	26	.335(8.50)
09	.167(4.25)	27	.344(8.75)
10	.177(4.50)	28	.354(9.00)
11	.187(4.75)	29	.364(9.25)
12	.197(5.00)	30	.374(9.50)
13	.207(5.25)	31	.384(9.75)
14	.217(5.50)	32	.394(10.00)
15	.226(5.75)		
16	.236(6.00)		
17	.246(6.25)		
18	.256(6.50)		

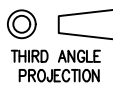



Serial number	Dimensions(in/mm) H
1	.039(1.00)
2	.059(1.50)
3	.079(2.00)

<p>THIRD ANGLE PROJECTION</p>	GENERAL TOLERANCES (UNLESS SPECIFIED)		APPROVE BY FRANK	DATE 23/DEC/19	PART NO. FPH20063-SXXBXXX4XXXXXX0X	ITEM NO. FPH20063	<p>Leader Of Industry</p>	
	DESIGN UNITS Inch (metric)	X.±.012(0.30)	X.'±5'	CHECKED BY CHERRY	DATE 23/DEC/19	TITLE Board to Board(Pin Header) Pitch 2.00mm 90° Angle(SMT)		REV 0
	SCALE 5:1	X.X±.008(0.20)	.X'±2'	DRAWN BY ZOEY	DATE 23/DEC/19	THIS DRAWING CONTAINS INFORMATION THAT IS PROPRIETARY TO TXGA INDUSTRIAL ELECTRONICS(S.Z)CO.,LTD AND SHOULD NOT BE USED WITHOUT WRITTEN PERMISSION		
	SIZE A4	X.XX±.006(0.15)	.XX'±1'					

REV	LOCATIONS	DESCRIPTION	DATE	REVISER	APPD

Circuits (n)	Part No.	Dimensions(in/mm)		Circuits (n)	Part No.	Dimensions(in/mm)	
		A	B			A	B
1	FPH20063-S01BXXX4XXXXX0X	—	.079(2.00)	21	FPH20063-S21BXXX4XXXXX0X	1.574(40.00)	1.654(42.00)
2	FPH20063-S02BXXX4XXXXX0X	.079(2.00)	.157(4.00)	22	FPH20063-S22BXXX4XXXXX0X	1.654(42.00)	1.732(44.00)
3	FPH20063-S03BXXX4XXXXX0X	.157(4.00)	.236(6.00)	23	FPH20063-S23BXXX4XXXXX0X	1.732(44.00)	1.811(46.00)
4	FPH20063-S04BXXX4XXXXX0X	.236(6.00)	.315(8.00)	24	FPH20063-S24BXXX4XXXXX0X	1.811(46.00)	1.890(48.00)
5	FPH20063-S05BXXX4XXXXX0X	.315(8.00)	.394(10.00)	25	FPH20063-S25BXXX4XXXXX0X	1.890(48.00)	1.969(50.00)
6	FPH20063-S06BXXX4XXXXX0X	.394(10.00)	.472(12.00)	26	FPH20063-S26BXXX4XXXXX0X	1.969(50.00)	2.047(52.00)
7	FPH20063-S07BXXX4XXXXX0X	.472(12.00)	.551(14.00)	27	FPH20063-S27BXXX4XXXXX0X	2.047(52.00)	2.126(54.00)
8	FPH20063-S08BXXX4XXXXX0X	.551(14.00)	.630(16.00)	28	FPH20063-S28BXXX4XXXXX0X	2.126(54.00)	2.205(56.00)
9	FPH20063-S09BXXX4XXXXX0X	.630(16.00)	.709(18.00)	29	FPH20063-S29BXXX4XXXXX0X	2.205(56.00)	2.283(58.00)
10	FPH20063-S10BXXX4XXXXX0X	.709(18.00)	.787(20.00)	30	FPH20063-S30BXXX4XXXXX0X	2.283(58.00)	2.362(60.00)
11	FPH20063-S11BXXX4XXXXX0X	.787(20.00)	.866(22.00)	31	FPH20063-S31BXXX4XXXXX0X	2.362(60.00)	2.441(62.00)
12	FPH20063-S12BXXX4XXXXX0X	.866(22.00)	.945(24.00)	32	FPH20063-S32BXXX4XXXXX0X	2.441(62.00)	2.520(64.00)
13	FPH20063-S13BXXX4XXXXX0X	.945(24.00)	1.024(26.00)	33	FPH20063-S33BXXX4XXXXX0X	2.520(64.00)	2.598(66.00)
14	FPH20063-S14BXXX4XXXXX0X	1.024(26.00)	1.102(28.00)	34	FPH20063-S34BXXX4XXXXX0X	2.598(66.00)	2.677(68.00)
15	FPH20063-S15BXXX4XXXXX0X	1.102(28.00)	1.181(30.00)	35	FPH20063-S35BXXX4XXXXX0X	2.677(68.00)	2.756(70.00)
16	FPH20063-S16BXXX4XXXXX0X	1.181(30.00)	1.260(32.00)	36	FPH20063-S36BXXX4XXXXX0X	2.756(70.00)	2.835(72.00)
17	FPH20063-S17BXXX4XXXXX0X	1.260(32.00)	1.339(34.00)	37	FPH20063-S37BXXX4XXXXX0X	2.835(72.00)	2.913(74.00)
18	FPH20063-S18BXXX4XXXXX0X	1.339(34.00)	1.417(36.00)	38	FPH20063-S38BXXX4XXXXX0X	2.913(74.00)	2.992(76.00)
19	FPH20063-S19BXXX4XXXXX0X	1.417(36.00)	1.496(38.00)	39	FPH20063-S39BXXX4XXXXX0X	2.992(76.00)	3.071(78.00)
20	FPH20063-S20BXXX4XXXXX0X	1.496(38.00)	1.574(40.00)	40	FPH20063-S40BXXX4XXXXX0X	3.071(78.00)	3.150(80.00)

 THIRD ANGLE PROJECTION	GENERAL TOLERANCES (UNLESS SPECIFIED)		APPROVE BY FRANK	DATE 23/DEC/19	PART NO. FPH20063-SXXBXXX4XXXXX0X	ITEM NO. FPH20063	 Leader Of Industry
	DESIGN UNITS Inch (metric)	X.±.012(0.30)	X.±5'	CHECKED BY CHERRY	DATE 23/DEC/19	TITLE Board to Board(Pin Header) Pitch 2.00mm 90° Angle(SMT)	
SCALE 5:1	SIZE A4	X.XX±.006(0.15)	.XX±1'	DRAWN BY ZOEY	DATE 23/DEC/19	THIS DRAWING CONTAINS INFORMATION THAT IS PROPRIETARY TO TXGA INDUSTRIAL ELECTRONICS(S.Z)CO.,LTD AND SHOULD NOT BE USED WITHOUT WRITTEN PERMISSION	
		X.XXX±.004(0.10)	.XXX±0.5'			REV 0	SHEET NO. 3/3