

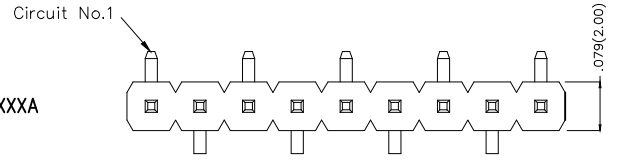
REV	LOCATIONS	DESCRIPTION	DATE	REVISED	APPD

SPECIFICATIONS

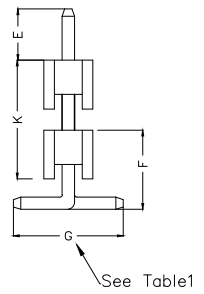
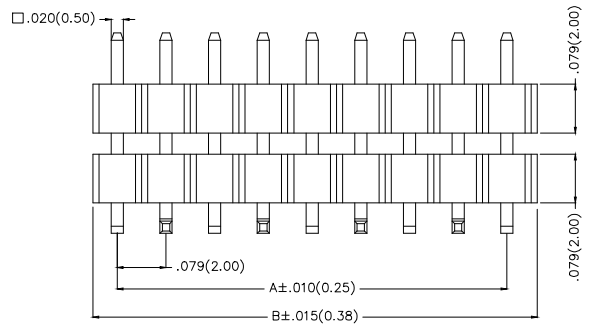
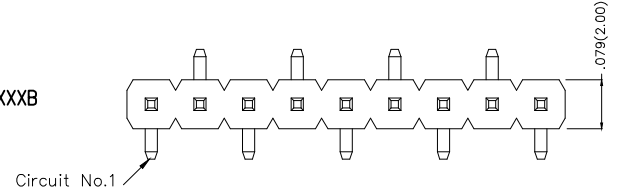
Electrical  
 Current Rating: 2.0A AC(rms)/DC  
 Voltage Rating: 250V AC(rms)/DC  
 Contact Resistance: 20 mΩ Max  
 Insulation Resistance: 1000 MΩ Min  
 Withstanding Voltage: 600V AC r.m.s  
 Temperature Range—Operating: -40°C~+105°C

Material  
 Housing: Glass Filled Polyester (UL 94V-0), Color: Black  
 Pin: Brass  
 Pin Plating: Gold plated/ Selective gold in contact area, bright tin on tail

Type A  
 FPH200S3-SXXSXXX4XXXXA



Type B  
 FPH200S3-SXXSXXX4XXXB

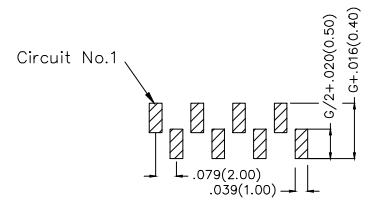


Ordering Information

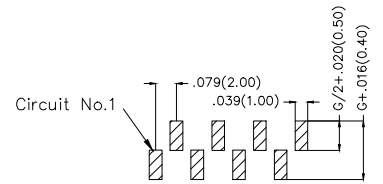
FPH 200 S3 - S XX S X XX 4 XX X X  
 1 2 3 4 5 6 7 8 9 10 11 12

1 Category FPH-Pin Header	2 Series Number 200-Pitch2.00mm	3 Distinction No. S3	4 Row Option S-Single Row	5 Circuits XX	6 Entry Angle S-180° Vertical	7 Plating 1-Gold plated 3-Selective gold in contact area, bright tin on tail
8 Thickness of Plating 01-1μ" 15-15μ" Custom plate available	9 Material-Resin 4-PA6T	10 Size 01,02... -Serial number (See Table1) Custom length available	11 Packaging M-Reel L-Tube	12 PCB Layout Type A-Type A B-Type B		

Type A  
 FPH200S3-SXXSXXX4XXXXA



Type B  
 FPH200S3-SXXSXXX4XXXB



Recommended P.C.Board Layout

 THIRD ANGLE PROJECTION	GENERAL TOLERANCES (UNLESS SPECIFIED)		APPROVE BY FRANK	DATE 25/JUN/13	PART NO. FPH200S3-SXXSXXX4XXXX	ITEM NO. FPH200S3	 Leader Of Industry
	DESIGN UNITS Inch (metric)	X.±.012(0.30) X.X±.008(0.20)	X.±5° .X'±2'	CHECKED BY CHERRY	DATE 25/JUN/13	TITLE Board to Board(Pin Header) Pitch 2.00mm 180° Vertical(SMT)	
SCALE 5:1	SIZE A4	X.XX±.006(0.15) X.XXX±.004(0.10)	.XX'±1° .XXX'±0.5°	DRAWN BY JACOB	DATE 25/JUN/13	THIS DRAWING CONTAINS INFORMATION THAT IS PROPRIETARY TO TXGA INDUSTRIAL ELECTRONICS(S.Z)CO.,LTD AND SHOULD NOT BE USED WITHOUT WRITTEN PERMISSION	

REV 0 SHEET NO. 1/3

1 2 3 4 5 6 7 8

REV	LOCATIONS	DESCRIPTION	DATE	REVISED	APPD

A

Table1

Serial number	Dimensions(in/mm)				Canceled Circuits	Note
	E	F	G	K		
01	.157(4.00)	.109(2.77)	.181(4.60)	.194(4.93)	—	
02	.157(4.00)	.098(2.50)	.177(4.50)	.157(4.00)	—	

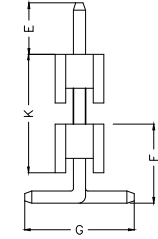
B

C

D

E

F



A

B

C

D

E

F

<p>THIRD ANGLE PROJECTION</p>	GENERAL TOLERANCES (UNLESS SPECIFIED)		APPROVE BY	DATE	PART NO.	ITEM NO.	<p>Leader Of Industry</p>
	X.±.012(0.30)	X.±5'	FRANK	25/JUN/13	FPH200S3-SXXSXXX4XXXX	FPH200S3	
	X.X±.008(0.20)	.X'±2'	CHECKED BY	DATE	TITLE		REV 0
	X.XX±.006(0.15)	.XX'±1'	CHERRY	25/JUN/13	Board to Board(Pin Header) Pitch 2.00mm 180° Vertical(SMT)		SHEET NO. 2/3
SCALE	SIZE	X.XXX±.004(0.10)	.XXX'±0.5'	DRAWN BY	DATE	THIS DRAWING CONTAINS INFORMATION THAT IS PROPRIETARY TO TXGA INDUSTRIAL ELECTRONICS(S.Z)CO.,LTD AND SHOULD NOT BE USED WITHOUT WRITTEN PERMISSION	
5:1	A4			JACOB	25/JUN/13		

1 2 3 4 5 6 7 8

1 2 3 4 5 6 7 8

REV	LOCATIONS	DESCRIPTION	DATE	REVSER	APPD

A

A

B

B

C

C

D

D

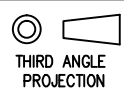

E

E

F

F

Circuits (n)	Part No.	Dimensions(in/mm)		Circuits (n)	Part No.	Dimensions(in/mm)	
		A	B			A	B
2	FPH200S3-S02SXXX4XXXX	.079(2.00)	.157(4.00)	22	FPH200S3-S22SXXX4XXXX	1.654(42.00)	1.732(44.00)
3	FPH200S3-S03SXXX4XXXX	.157(4.00)	.236(6.00)	23	FPH200S3-S23SXXX4XXXX	1.732(44.00)	1.811(46.00)
4	FPH200S3-S04SXXX4XXXX	.236(6.00)	.315(8.00)	24	FPH200S3-S24SXXX4XXXX	1.811(46.00)	1.890(48.00)
5	FPH200S3-S05SXXX4XXXX	.315(8.00)	.394(10.00)	25	FPH200S3-S25SXXX4XXXX	1.890(48.00)	1.969(50.00)
6	FPH200S3-S06SXXX4XXXX	.394(10.00)	.472(12.00)	26	FPH200S3-S26SXXX4XXXX	1.969(50.00)	2.047(52.00)
7	FPH200S3-S07SXXX4XXXX	.472(12.00)	.551(14.00)	27	FPH200S3-S27SXXX4XXXX	2.047(52.00)	2.126(54.00)
8	FPH200S3-S08SXXX4XXXX	.551(14.00)	.630(16.00)	28	FPH200S3-S28SXXX4XXXX	2.126(54.00)	2.205(56.00)
9	FPH200S3-S09SXXX4XXXX	.630(16.00)	.709(18.00)	29	FPH200S3-S29SXXX4XXXX	2.205(56.00)	2.283(58.00)
10	FPH200S3-S10SXXX4XXXX	.709(18.00)	.787(20.00)	30	FPH200S3-S30SXXX4XXXX	2.283(58.00)	2.362(60.00)
11	FPH200S3-S11SXXX4XXXX	.787(20.00)	.866(22.00)	31	FPH200S3-S31SXXX4XXXX	2.362(60.00)	2.441(62.00)
12	FPH200S3-S12SXXX4XXXX	.866(22.00)	.945(24.00)	32	FPH200S3-S32SXXX4XXXX	2.441(62.00)	2.520(64.00)
13	FPH200S3-S13SXXX4XXXX	.945(24.00)	1.024(26.00)	33	FPH200S3-S33SXXX4XXXX	2.520(64.00)	2.598(66.00)
14	FPH200S3-S14SXXX4XXXX	1.024(26.00)	1.102(28.00)	34	FPH200S3-S34SXXX4XXXX	2.598(66.00)	2.677(68.00)
15	FPH200S3-S15SXXX4XXXX	1.102(28.00)	1.181(30.00)	35	FPH200S3-S35SXXX4XXXX	2.677(68.00)	2.756(70.00)
16	FPH200S3-S16SXXX4XXXX	1.181(30.00)	1.260(32.00)	36	FPH200S3-S36SXXX4XXXX	2.756(70.00)	2.835(72.00)
17	FPH200S3-S17SXXX4XXXX	1.260(32.00)	1.339(34.00)	37	FPH200S3-S37SXXX4XXXX	2.835(72.00)	2.913(74.00)
18	FPH200S3-S18SXXX4XXXX	1.339(34.00)	1.417(36.00)	38	FPH200S3-S38SXXX4XXXX	2.913(74.00)	2.992(76.00)
19	FPH200S3-S19SXXX4XXXX	1.417(36.00)	1.496(38.00)	39	FPH200S3-S39SXXX4XXXX	2.992(76.00)	3.071(78.00)
20	FPH200S3-S20SXXX4XXXX	1.496(38.00)	1.574(40.00)	40	FPH200S3-S40SXXX4XXXX	3.071(78.00)	3.150(80.00)
21	FPH200S3-S21SXXX4XXXX	1.574(40.00)	1.654(42.00)				

 THIRD ANGLE PROJECTION	GENERAL TOLERANCES (UNLESS SPECIFIED)		APPROVE BY FRANK	DATE 25/JUN/13	PART NO. FPH200S3-SXXSXXX4XXXX	ITEM NO. FPH200S3	 Leader Of Industry		
	DESIGN UNITS Inch (metric)	X.±.012(0.30) X.X±.008(0.20)	X.±5' .X'±2'	CHECKED BY CHERRY	DATE 25/JUN/13	TITLE Board to Board(Pin Header) Pitch 2.00mm 180° Vertical(SMT)		REV 0	SHEET NO. 3/3
	SCALE 5:1	SIZE A4	X.XX±.006(0.15) X.XXX±.004(0.10)	DRAWN BY JACOB	DATE 25/JUN/13	THIS DRAWING CONTAINS INFORMATION THAT IS PROPRIETARY TO TXGA INDUSTRIAL ELECTRONICS(S.Z)CO.,LTD AND SHOULD NOT BE USED WITHOUT WRITTEN PERMISSION			

1 2 3 4 5 6 7 8