

REV	LOCATIONS	DESCRIPTION	DATE	REVISER	APPD

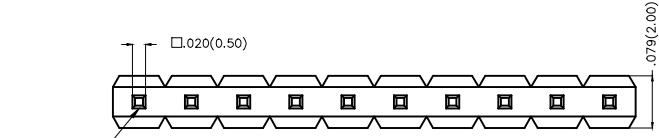
**SPECIFICATIONS**

**Electrical**

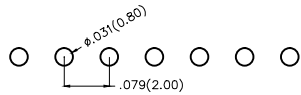
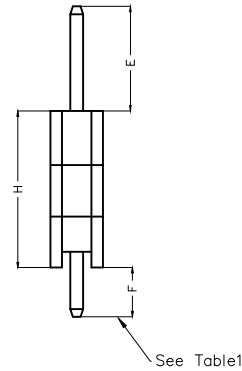
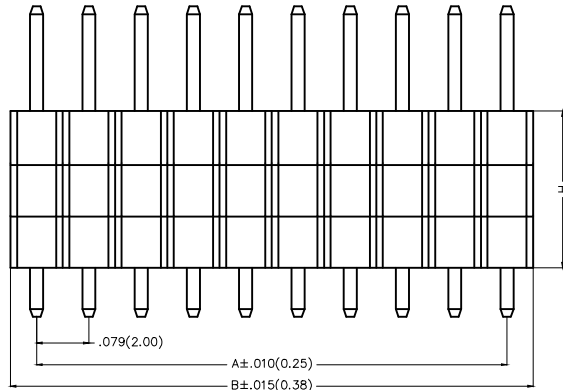
Current Rating: 2.0A AC(rms)/DC  
Voltage Rating: 250V AC(rms)/DC  
Contact Resistance: 20 mΩ Max  
Insulation Resistance: 1000 MΩ Min  
Withstanding Voltage: 600V AC r.m.s  
Temperature Range—Operating: -40°C~+105°C

**Material**

Housing: Glass Filled Polyester (UL 94V-0), Color: Black  
Pin: Brass  
Pin Plating: Gold plated/ Selective gold in contact area, bright tin on tail



Circuit No.1



Recommended P.C.Board Layout

**Ordering Information**

FPH 200 S5 - S XX S X XX X XX B  
1 2 3 4 5 6 7 8 9 10 11



1 <u>Category</u> FPH—Pin Header	2 <u>Series Number</u> 200—Pitch2.00mm	3 <u>Distinction No.</u> S5	4 <u>Row Option</u> S—Single Row	5 <u>Circuits</u> XX	6 <u>Entry Angle</u> S—180° Vertical
7 <u>Plating</u> 1—Gold plated 3—Selective gold in contact area, bright tin on tail	8 <u>Thickness of Plating</u> 01—1μ" 15—15μ" Custom plate available	9 <u>Material—Resin</u> 1—PBT 4—PA6T	10 <u>Size</u> 01,02... —Serial number (See Table1) Custom length available	11 <u>Packaging</u> B—PE Bag	

<p>THIRD ANGLE PROJECTION</p>	<p>GENERAL TOLERANCES (UNLESS SPECIFIED)</p>		<p>APPROVE BY FRANK</p>	<p>DATE 25/JUN/13</p>	<p>PART NO. FPH200S5-SXXSXXXXXB</p>	<p>ITEM NO. FPH200S5</p>	<p>Leader Of Industry</p>
	<p>DESIGN UNITS Inch (metric)</p>	<p>X.±.012(0.30) X.±5'</p>	<p>CHECKED BY CHERRY</p>	<p>DATE 25/JUN/13</p>	<p>TITLE Board to Board(Pin Header) Pitch 2.00mm 180° Vertical(DIP)</p>		
<p>SCALE 5:1</p>	<p>SIZE A4</p>	<p>X.XX±.006(0.15) .XX±1'</p>	<p>DRAWN BY JACOB</p>	<p>DATE 25/JUN/13</p>	<p>THIS DRAWING CONTAINS INFORMATION THAT IS PROPRIETARY TO TXGA INDUSTRIAL ELECTRONICS(S.Z.)CO.,LTD AND SHOULD NOT BE USED WITHOUT WRITTEN PERMISSION</p>		



REV	LOCATIONS	DESCRIPTION	DATE	REVISER	APPD

Circuits (n)	Part No.	Dimensions(in/mm)		Circuits (n)	Part No.	Dimensions(in/mm)	
		A	B			A	B
1	FPH200S5-S01SXXXXXXB	—	.079(2.00)	21	FPH200S5-S21SXXXXXXB	1.574(40.00)	1.654(42.00)
2	FPH200S5-S02SXXXXXXB	.079(2.00)	.157(4.00)	22	FPH200S5-S22SXXXXXXB	1.654(42.00)	1.732(44.00)
3	FPH200S5-S03SXXXXXXB	.157(4.00)	.236(6.00)	23	FPH200S5-S23SXXXXXXB	1.732(44.00)	1.811(46.00)
4	FPH200S5-S04SXXXXXXB	.236(6.00)	.315(8.00)	24	FPH200S5-S24SXXXXXXB	1.811(46.00)	1.890(48.00)
5	FPH200S5-S05SXXXXXXB	.315(8.00)	.394(10.00)	25	FPH200S5-S25SXXXXXXB	1.890(48.00)	1.969(50.00)
6	FPH200S5-S06SXXXXXXB	.394(10.00)	.472(12.00)	26	FPH200S5-S26SXXXXXXB	1.969(50.00)	2.047(52.00)
7	FPH200S5-S07SXXXXXXB	.472(12.00)	.551(14.00)	27	FPH200S5-S27SXXXXXXB	2.047(52.00)	2.126(54.00)
8	FPH200S5-S08SXXXXXXB	.551(14.00)	.630(16.00)	28	FPH200S5-S28SXXXXXXB	2.126(54.00)	2.205(56.00)
9	FPH200S5-S09SXXXXXXB	.630(16.00)	.709(18.00)	29	FPH200S5-S29SXXXXXXB	2.205(56.00)	2.283(58.00)
10	FPH200S5-S10SXXXXXXB	.709(18.00)	.787(20.00)	30	FPH200S5-S30SXXXXXXB	2.283(58.00)	2.362(60.00)
11	FPH200S5-S11SXXXXXXB	.787(20.00)	.866(22.00)	31	FPH200S5-S31SXXXXXXB	2.362(60.00)	2.441(62.00)
12	FPH200S5-S12SXXXXXXB	.866(22.00)	.945(24.00)	32	FPH200S5-S32SXXXXXXB	2.441(62.00)	2.520(64.00)
13	FPH200S5-S13SXXXXXXB	.945(24.00)	1.024(26.00)	33	FPH200S5-S33SXXXXXXB	2.520(64.00)	2.598(66.00)
14	FPH200S5-S14SXXXXXXB	1.024(26.00)	1.102(28.00)	34	FPH200S5-S34SXXXXXXB	2.598(66.00)	2.677(68.00)
15	FPH200S5-S15SXXXXXXB	1.102(28.00)	1.181(30.00)	35	FPH200S5-S35SXXXXXXB	2.677(68.00)	2.756(70.00)
16	FPH200S5-S16SXXXXXXB	1.181(30.00)	1.260(32.00)	36	FPH200S5-S36SXXXXXXB	2.756(70.00)	2.835(72.00)
17	FPH200S5-S17SXXXXXXB	1.260(32.00)	1.339(34.00)	37	FPH200S5-S37SXXXXXXB	2.835(72.00)	2.913(74.00)
18	FPH200S5-S18SXXXXXXB	1.339(34.00)	1.417(36.00)	38	FPH200S5-S38SXXXXXXB	2.913(74.00)	2.992(76.00)
19	FPH200S5-S19SXXXXXXB	1.417(36.00)	1.496(38.00)	39	FPH200S5-S39SXXXXXXB	2.992(76.00)	3.071(78.00)
20	FPH200S5-S20SXXXXXXB	1.496(38.00)	1.574(40.00)	40	FPH200S5-S40SXXXXXXB	3.071(78.00)	3.150(80.00)

 THIRD ANGLE PROJECTION	GENERAL TOLERANCES (UNLESS SPECIFIED)		APPROVE BY FRANK	DATE 25/JUN/13	PART NO. FPH200S5-SXXSXXXXXXB	ITEM NO. FPH200S5	 Leader Of Industry	
	DESIGN UNITS Inch (metric)	X.X±.012(0.30)	X.±5'	CHECKED BY CHERRY	DATE 25/JUN/13	TITLE Board to Board(Pin Header) Pitch 2.00mm 180° Vertical(DIP)		REV 0
SCALE 5:1	SIZE A4	X.XX±.006(0.15)	.XX±1'	DRAWN BY JACOB	DATE 25/JUN/13	THIS DRAWING CONTAINS INFORMATION THAT IS PROPRIETARY TO TXGA INDUSTRIAL ELECTRONICS(S.Z)CO.,LTD AND SHOULD NOT BE USED WITHOUT WRITTEN PERMISSION		