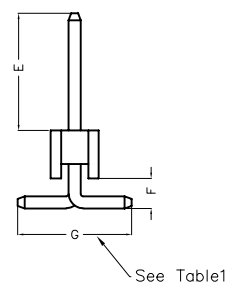
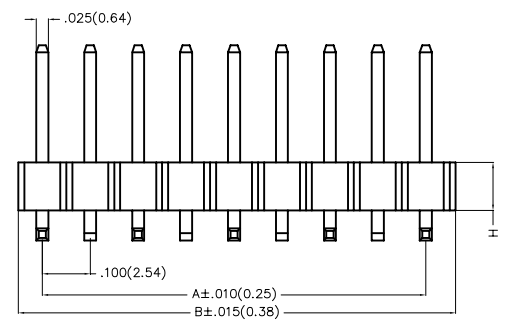
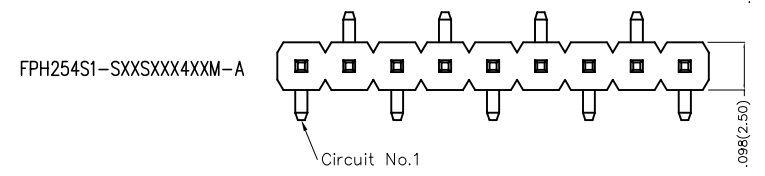
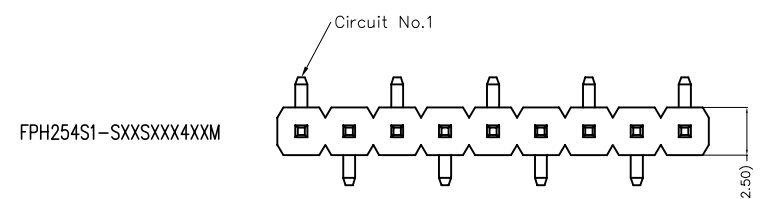


REV	LOCATIONS	DESCRIPTION	DATE	REVISER	APPD

SPECIFICATIONS

Electrical  
 Current Rating: 3.0A AC(rms)/DC  
 Voltage Rating: 250V AC(rms)/DC  
 Contact Resistance: 20 mΩ Max  
 Insulation Resistance: 1000 MΩ Min  
 Withstanding Voltage: 600V AC r.m.s  
 Temperature Range-Operating: -40°C~+105°C

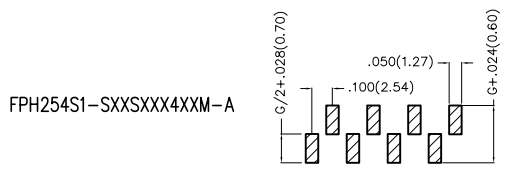
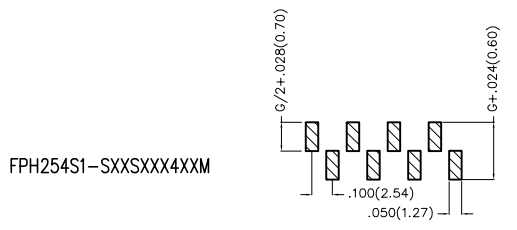
Material  
 Housing: Glass Filled Polyester (UL 94V-0), Color: Black  
 Pin: Brass  
 Pin Plating: Gold plated/ Selective gold in contact area, tin on tail



Ordering Information

FPH 254 S1 - S XX S X XX 4 XX M (- A)

1	Category	2	Series Number	3	Distinction No.	4	Row Option	5	Circuits	6	Entry Angle
	FPH-Pin Header		254-Pitch 2.54mm		S1		S-Single Row		XX		S-180° Vertical
7	Plating	8	Thickness of Plating	9	Material-Resin	10	Size	11	Packaging	12	Type
	1-Gold plated 3-Selective gold in contact area, tin on tail		01-1μ" 15-15μ" Custom plate available		4-PA6T		01,02... -Serial number (See Table1) Custom length available		M-Reel		A-Type A



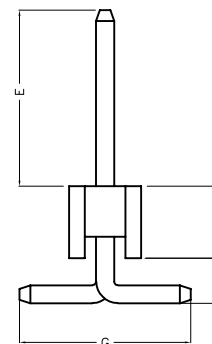
Recommended P.C.Board Layout

 THIRD ANGLE PROJECTION	GENERAL TOLERANCES (UNLESS SPECIFIED)		APPROVE BY	DATE	PART NO.	ITEM NO.	 Leader Of Industry
	X.±.012(0.30)	X.±5'	FRANK	1/AUG/13	FPH254S1-SXXSXXX4XXM(-A)	FPH254S1	
DESIGN UNITS	X.X±.008(0.20)	.X'±2'	CHECKED BY	DATE	TITLE		REV 0    SHEET NO. 1/3 THIS DRAWING CONTAINS INFORMATION THAT IS PROPRIETARY TO TXGA INDUSTRIAL ELECTRONICS(S.Z)CO.,LTD AND SHOULD NOT BE USED WITHOUT WRITTEN PERMISSION
Inch (metric)	X.XX±.006(0.15)	.XX'±1'	CHERRY	1/AUG/13	Board to Board(Pin Header) Pitch 2.54mm 180° Vertical(SMT)		
SCALE	X.XXX±.004(0.10)	.XXX'±0.5'	DRAWN BY	DATE			
5:1			JACOB	1/AUG/13			
SIZE							
A4							

REV	LOCATIONS	DESCRIPTION	DATE	REVUSER	APPD

Table1

Serial number	Dimensions(in/mm)				Canceled Circuits	Note
	E	F	G	H		
01	.209(5.30)	.063(1.60)	.200(5.08)	.098(2.50)		
02	.230(5.84)	.052(1.32)	.189(4.80)	.098(2.50)		
03	.230(5.85)	.120(3.05)	.209(5.30)	.098(2.50)		
04	.236(6.00)	.050(1.26)	.189(4.80)	1.00(2.54)		
05	.236(6.00)	.026(0.65±0.1)	.209(5.30)	.098(2.50)		
06	.230(5.84)	.059(1.51)	.320(8.13)	1.00(2.54)		
07	.236(6.00)	.120(3.05)	.209(5.30)	.098(2.50)		
08	.197(5.00)	.039(1.00)	.209(5.30)	.059(1.50)		
09	.236(6.00)	.138(3.50)	.228(5.80)	.098(2.50)		
10	.327(8.30)	.051(1.30)	.189(4.80)	.098(2.50)		
11	.445(11.30)	.051(1.30)	.189(4.80)	.098(2.50)		
12	.189(4.80)	.025(0.64)	.299(7.60)	1.00(2.54)		
13	.551(14.00)	.138(3.50)	.200(5.08)	.098(2.50)		
14	.669(17.00)	.138(3.50)	.200(5.08)	.098(2.50)		
15	.234(5.95)	.065(1.65)	.187(4.75)	.098(2.50)		



 THIRD ANGLE PROJECTION	GENERAL TOLERANCES (UNLESS SPECIFIED)		APPROVE BY	DATE	PART NO.	ITEM NO.	 Leader Of Industry	
	X.±.012(0.30)	X'±5'	FRANK	1/AUG/13	FPH254S1-SXXSXXX4XXM(-A)	FPH254S1		
	DESIGN UNITS	X.XX±.008(0.20)	.X'±2'	CHECKED BY	DATE	TITLE		THIS DRAWING CONTAINS INFORMATION THAT IS PROPRIETARY TO TXGA INDUSTRIAL ELECTRONICS(S.Z)CO.,LTD AND SHOULD NOT BE USED WITHOUT WRITTEN PERMISSION
	Inch (metric)	X.XX±.006(0.15)	.XX'±1'	CHERRY	1/AUG/13	Board to Board(Pin Header) Pitch 2.54mm 180° Vertical(SMT)		
SCALE	SIZE	X.XXX±.004(0.10)	.XXX'±0.5'	DRAWN BY	DATE	REV 0	SHEET NO. 2/3	
5:1	A4	JACOB		1/AUG/13				

1 2 3 4 5 6 7 8

REV	LOCATIONS	DESCRIPTION	DATE	REVISER	APPD

A

A

B

B

C

C

D

D



E

E

F

F

Circuits (n)	Part No.	Dimensions(in/mm)		Circuits (n)	Part No.	Dimensions(in/mm)	
		A	B			A	B
1	FPH254S1-S01SXXX4XXM(-A)	—	.100(2.54)	21	FPH254S1-S21SXXX4XXM(-A)	2.000(50.80)	2.100(53.34)
2	FPH254S1-S02SXXX4XXM(-A)	.100(2.54)	.200(5.08)	22	FPH254S1-S22SXXX4XXM(-A)	2.100(53.34)	2.200(55.88)
3	FPH254S1-S03SXXX4XXM(-A)	.200(5.08)	.300(7.62)	23	FPH254S1-S23SXXX4XXM(-A)	2.200(55.88)	2.300(58.42)
4	FPH254S1-S04SXXX4XXM(-A)	.300(7.62)	.400(10.16)	24	FPH254S1-S24SXXX4XXM(-A)	2.300(58.42)	2.400(60.96)
5	FPH254S1-S05SXXX4XXM(-A)	.400(10.16)	.500(12.70)	25	FPH254S1-S25SXXX4XXM(-A)	2.400(60.96)	2.500(63.50)
6	FPH254S1-S06SXXX4XXM(-A)	.500(12.70)	.600(15.24)	26	FPH254S1-S26SXXX4XXM(-A)	2.500(63.50)	2.600(66.04)
7	FPH254S1-S07SXXX4XXM(-A)	.600(15.24)	.700(17.78)	27	FPH254S1-S27SXXX4XXM(-A)	2.600(66.04)	2.700(68.58)
8	FPH254S1-S08SXXX4XXM(-A)	.700(17.78)	.800(20.32)	28	FPH254S1-S28SXXX4XXM(-A)	2.700(68.58)	2.800(71.12)
9	FPH254S1-S09SXXX4XXM(-A)	.800(20.32)	.900(22.86)	29	FPH254S1-S29SXXX4XXM(-A)	2.800(71.12)	2.900(73.66)
10	FPH254S1-S10SXXX4XXM(-A)	.900(22.86)	1.000(25.40)	30	FPH254S1-S30SXXX4XXM(-A)	2.900(73.66)	3.000(76.20)
11	FPH254S1-S11SXXX4XXM(-A)	1.000(25.40)	1.100(27.94)	31	FPH254S1-S31SXXX4XXM(-A)	3.000(76.20)	3.100(78.74)
12	FPH254S1-S12SXXX4XXM(-A)	1.100(27.94)	1.200(30.48)	32	FPH254S1-S32SXXX4XXM(-A)	3.100(78.74)	3.200(81.28)
13	FPH254S1-S13SXXX4XXM(-A)	1.200(30.48)	1.300(33.02)	33	FPH254S1-S33SXXX4XXM(-A)	3.200(81.28)	3.300(83.82)
14	FPH254S1-S14SXXX4XXM(-A)	1.300(33.02)	1.400(35.56)	34	FPH254S1-S34SXXX4XXM(-A)	3.300(83.82)	3.400(86.36)
15	FPH254S1-S15SXXX4XXM(-A)	1.400(35.56)	1.500(38.10)	35	FPH254S1-S35SXXX4XXM(-A)	3.400(86.36)	3.500(88.90)
16	FPH254S1-S16SXXX4XXM(-A)	1.500(38.10)	1.600(40.64)	36	FPH254S1-S36SXXX4XXM(-A)	3.500(88.90)	3.600(91.44)
17	FPH254S1-S17SXXX4XXM(-A)	1.600(40.64)	1.700(43.18)	37	FPH254S1-S37SXXX4XXM(-A)	3.600(91.44)	3.700(93.98)
18	FPH254S1-S18SXXX4XXM(-A)	1.700(43.18)	1.800(45.72)	38	FPH254S1-S38SXXX4XXM(-A)	3.700(93.98)	3.800(96.52)
19	FPH254S1-S19SXXX4XXM(-A)	1.800(45.72)	1.900(48.26)	39	FPH254S1-S39SXXX4XXM(-A)	3.800(96.52)	3.900(99.06)
20	FPH254S1-S20SXXX4XXM(-A)	1.900(48.26)	2.000(50.80)	40	FPH254S1-S40SXXX4XXM(-A)	3.900(99.06)	4.000(101.60)

 THIRD ANGLE PROJECTION	GENERAL TOLERANCES (UNLESS SPECIFIED)		APPROVE BY	DATE	PART NO.	ITEM NO.	 Leader Of Industry	
	X.±.012(0.30)	.X'±5"	FRANK	1/AUG/13	FPH254S1-SXXSXXX4XXM(-A)	FPH254S1		
	X.XX±.008(0.20)	.X'±2"	CHECKED BY	DATE	TITLE	REV 0		SHEET NO.3/3
	X.XX±.006(0.15)	.XX'±1"	CHEERY	1/AUG/13	Board to Board(Pin Header) Pitch 2.54mm 180° Vertical(SMT)			
SCALE	SIZE	X.XXX±.004(0.10)	.XXX'±0.5"	DRAWN BY	DATE	THIS DRAWING CONTAINS INFORMATION THAT IS PROPRIETARY TO TXGA INDUSTRIAL ELECTRONICS(S.Z)CO.,LTD AND SHOULD NOT BE USED WITHOUT WRITTEN PERMISSION		
5:1	A4			JACOB	1/AUG/13			

1 2 3 4 5 6 7 8