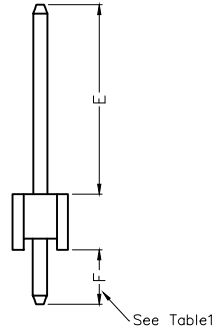
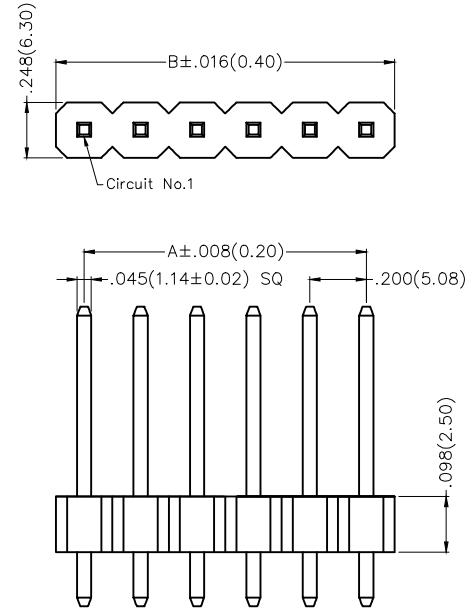


1 2 3 4 5 6 7 8

REV	LOCATIONS	DESCRIPTION	DATE	REVISER	APPD

SPECIFICATIONS

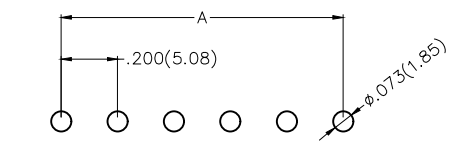
Electrical  
 Current Rating: 5A AC(rms)/DC  
 Voltage Rating: 250V AC(rms)/DC  
 Contact Resistance: 20 mΩ Max  
 Insulation Resistance: 1000 MΩ Min  
 Withstanding Voltage: 500V AC r.m.s  
 Temperature Range—Operating: -40°C~+105°C  
 Material and plating  
 Housing: LCP (UL 94V-0), Color: Black  
 Pin: Brass/ Gold plated



Ordering Information

FPH 508 04 - S XX S 1 XX 3 XX XX 00 B  
 1 2 3 4 5 6 7 8 9 10 11 12

1	Category FPH—Pin Header	2	Series Number 508—Pitch5.08mm	3	Distinction No. 04	4	Row Option S—Single Row	5	Circuits XX	6	Entry Angle S—180° Vertical
7	Plating 1—Gold plated	8	Thickness of Plating 00—Gold Flash 01—1μ" Custom plate available	9	Material—Resin 3—LCP	10	E Size 01,02...—Serial number (See Table1)	11	F Size 01,02...—Serial number (See Table1)	12	Packaging B—PE Bag



Recommended P.C.Board Layout

<p>THIRD ANGLE PROJECTION</p>	GENERAL TOLERANCES (UNLESS SPECIFIED)		APPROVE BY FRANK	DATE 25/MAY/24	PART NO. FPH50804-SXXS1XX3XXX00B	ITEM NO. FPH50804	<p>Building Technology Cornerstone</p>		
	X.±.012(0.30)	X.±5°	CHECKED BY CHERRY	DATE 25/MAY/24	TITLE Board to Board(Pin Header) Pitch 5.08mm 180° Vertical(DIP)			REV 0	SHEET NO. 1/3
	X.X±.008(0.20)	.X'±2'	DRAWN BY NICK	DATE 25/MAY/24	THIS DRAWING CONTAINS INFORMATION THAT IS PROPRIETARY TO TXGA INDUSTRIAL ELECTRONICS(S.Z)CO.,LTD AND SHOULD NOT BE USED WITHOUT WRITTEN PERMISSION				
SCALE 5:1	SIZE A4	X.XX±.006(0.15)	.XX'±1'						
		X.XXX±.004(0.10)	.XXX'±0.5'						

1 2 3 4 5 6 7 8

1 2 3 4 5 6 7 8

REV	LOCATIONS	DESCRIPTION	DATE	REVISER	APPD

A

Table1

Serial number	Dimensions (in/mm) E	Serial number	Dimensions (in/mm) E
01	.059(1.50)	22	.266(6.75)
02	.069(1.75)	23	.276(7.00)
03	.079(2.00)	24	.285(7.25)
04	.089(2.25)	25	.295(7.50)
05	.098(2.50)	26	.305(7.75)
06	.108(2.75)	27	.315(8.00)
07	.118(3.00)	28	.325(8.25)
08	.128(3.25)	29	.335(8.50)
09	.138(3.50)	30	.344(8.75)
10	.148(3.75)	31	.354(9.00)
11	.157(4.00)	32	.364(9.25)
12	.167(4.25)	33	.374(9.50)
13	.177(4.50)	34	.384(9.75)
14	.187(4.75)	35	.394(10.00)
15	.197(5.00)		
16	.207(5.25)		
17	.217(5.50)		
18	.226(5.75)		
19	.236(6.00)		
20	.246(6.25)		
21	.256(6.50)		

B

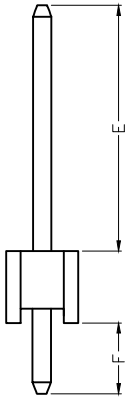
C

D

E

F

Serial number	Dimensions (in/mm) F	Serial number	Dimensions (in/mm) F
01	.059(1.50)	19	.236(6.00)
02	.069(1.75)	20	.246(6.25)
03	.079(2.00)	21	.256(6.50)
04	.089(2.25)	22	.266(6.75)
05	.098(2.50)	23	.276(7.00)
06	.108(2.75)	24	.285(7.25)
07	.118(3.00)	25	.295(7.50)
08	.128(3.25)	26	.305(7.75)
09	.138(3.50)	27	.315(8.00)
10	.148(3.75)	28	.325(8.25)
11	.157(4.00)	29	.335(8.50)
12	.167(4.25)	30	.344(8.75)
13	.177(4.50)	31	.354(9.00)
14	.187(4.75)	32	.364(9.25)
15	.197(5.00)	33	.374(9.50)
16	.207(5.25)	34	.384(9.75)
17	.217(5.50)	35	.394(10.00)
18	.226(5.75)		



<p>THIRD ANGLE PROJECTION</p>	GENERAL TOLERANCES (UNLESS SPECIFIED)		APPROVE BY FRANK	DATE 25/MAY/24	PART NO. FPH50804-SXXS1XX3XXX00B	ITEM NO. FPH50804	<p>Building Technology Cornerstone</p>	
	X.±.012(0.30)	X.±5'	CHECKED BY CHERRY	DATE 25/MAY/24	TITLE Board to Board(Pin Header) Pitch 5.08mm 180° Vertical(DIP)			REV 0
	DESIGN UNITS Inch (metric)	X.X±.008(0.20)	X.±2"	DRAWN BY NICK	DATE 25/MAY/24	THIS DRAWING CONTAINS INFORMATION THAT IS PROPRIETARY TO TXGA INDUSTRIAL ELECTRONICS(S.Z)CO.,LTD AND SHOULD NOT BE USED WITHOUT WRITTEN PERMISSION		
	SCALE 5:1	SIZE A4	X.XX±.006(0.15)	X.XX±1"	X.XX±.004(0.10)	X.XX±0.5'		

1 2 3 4 5 6 7 8

1 2 3 4 5 6 7 8

REV	LOCATIONS	DESCRIPTION	DATE	REVISER	APPD

A

A

B

B

C

C

D

D



E

E

F

F

Circuits (n)	Part No.	Dimensions(in/mm)		Circuits (n)	Part No.	Dimensions(in/mm)	
		A	B			A	B
1	FPH50804-S01S1XX3XXXX00B	-	.200(5.08)	16	FPH50804-S16S1XX3XXXX00B	3.000(76.20)	3.200(81.28)
2	FPH50804-S02S1XX3XXXX00B	.200(5.08)	.400(10.16)	17	FPH50804-S17S1XX3XXXX00B	3.200(81.28)	3.400(86.36)
3	FPH50804-S03S1XX3XXXX00B	.400(10.16)	.600(15.24)	18	FPH50804-S18S1XX3XXXX00B	3.400(86.36)	3.600(91.44)
4	FPH50804-S04S1XX3XXXX00B	.600(15.24)	.800(20.32)	19	FPH50804-S19S1XX3XXXX00B	3.600(91.44)	3.800(96.52)
5	FPH50804-S05S1XX3XXXX00B	.800(20.32)	1.000(25.40)	20	FPH50804-S20S1XX3XXXX00B	3.800(96.52)	4.000(101.60)
6	FPH50804-S06S1XX3XXXX00B	1.000(25.40)	1.200(30.48)	21	FPH50804-S21S1XX3XXXX00B	4.000(101.60)	4.200(106.68)
7	FPH50804-S07S1XX3XXXX00B	1.200(30.48)	1.400(35.56)	22	FPH50804-S22S1XX3XXXX00B	4.200(106.68)	4.400(111.76)
8	FPH50804-S08S1XX3XXXX00B	1.400(35.56)	1.600(40.64)	23	FPH50804-S23S1XX3XXXX00B	4.400(111.76)	4.600(116.84)
9	FPH50804-S09S1XX3XXXX00B	1.600(40.64)	1.800(45.72)	24	FPH50804-S24S1XX3XXXX00B	4.600(116.84)	4.800(121.92)
10	FPH50804-S10S1XX3XXXX00B	1.800(45.72)	2.000(50.80)	25	FPH50804-S25S1XX3XXXX00B	4.800(121.92)	5.000(127.00)
11	FPH50804-S11S1XX3XXXX00B	2.000(50.80)	2.200(55.88)	26	FPH50804-S26S1XX3XXXX00B	5.000(127.00)	5.200(132.08)
12	FPH50804-S12S1XX3XXXX00B	2.200(55.88)	2.400(60.96)	27	FPH50804-S27S1XX3XXXX00B	5.200(132.08)	5.400(137.16)
13	FPH50804-S13S1XX3XXXX00B	2.400(60.96)	2.600(66.04)	28	FPH50804-S28S1XX3XXXX00B	5.400(137.16)	5.600(142.24)
14	FPH50804-S14S1XX3XXXX00B	2.600(66.04)	2.800(71.12)	29	FPH50804-S29S1XX3XXXX00B	5.600(142.24)	5.800(147.32)
15	FPH50804-S15S1XX3XXXX00B	2.800(71.12)	3.000(76.20)	30	FPH50804-S30S1XX3XXXX00B	5.800(147.32)	6.000(152.40)

 THIRD ANGLE PROJECTION	GENERAL TOLERANCES (UNLESS SPECIFIED)		APPROVE BY FRANK	DATE 25/MAY/24	PART NO. FPH50804-SXXS1XX3XXXX00B	ITEM NO. FPH50804	 Building Technology Cornerstone	
	X.±.012(0.30)	X.±5'	CHECKED BY CHERRY	DATE 25/MAY/24	TITLE Board to Board(Pin Header) Pitch 5.08mm 180° Vertical(DIP)			REV 0
	X.X±.008(0.20)	.X'±2'	DRAWN BY NICK	DATE 25/MAY/24	THIS DRAWING CONTAINS INFORMATION THAT IS PROPRIETARY TO TXGA INDUSTRIAL ELECTRONICS(S.Z)CO.,LTD AND SHOULD NOT BE USED WITHOUT WRITTEN PERMISSION			SHEET NO. 3/3
	X.XX±.006(0.15)	.XX'±1'						
SCALE 5:1	SIZE A4	X.XXX±.004(0.10)	.XXX'±0.5'					

1 2 3 4 5 6 7 8