

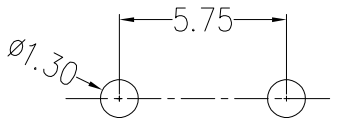
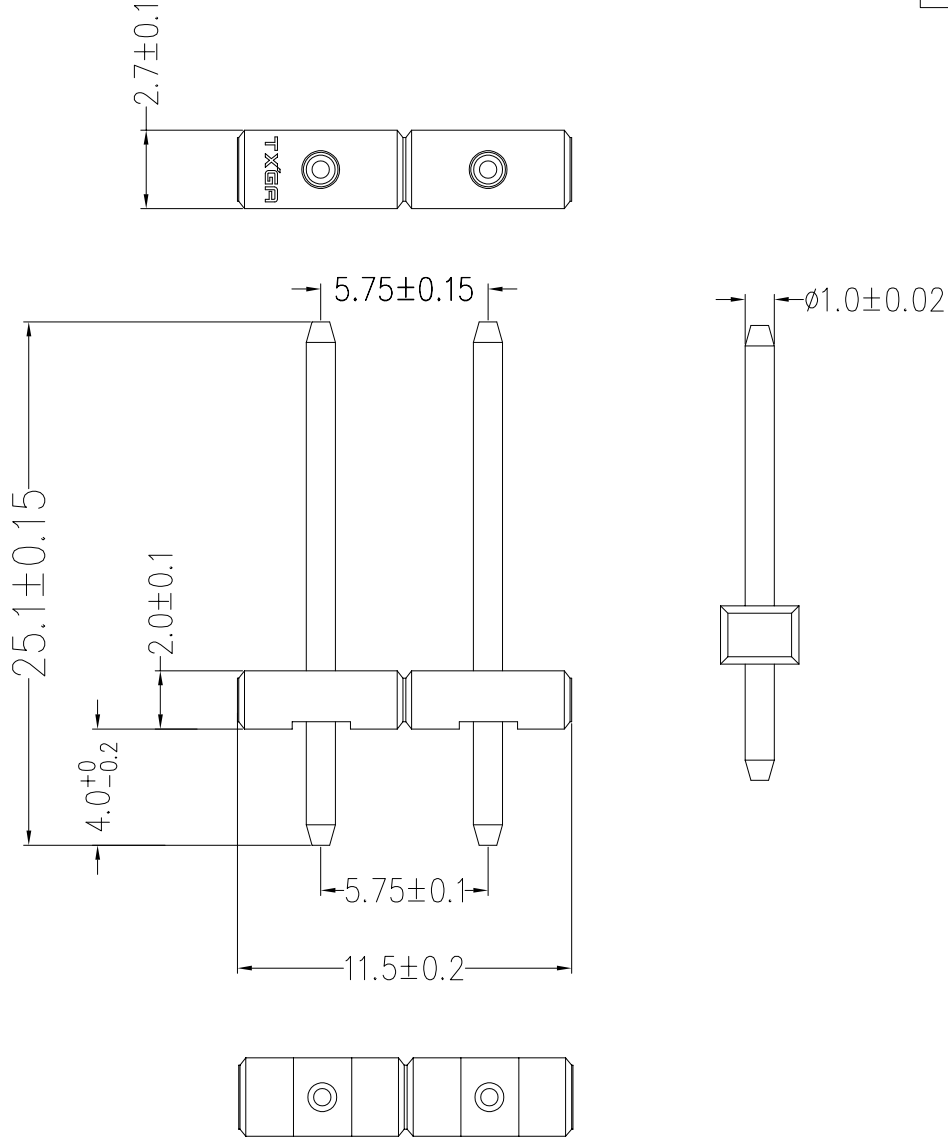
REV	LOCATIONS	DESCRIPTION	DATE	REVISER	APPD

Electrical

Current Rating : 10A AC(rms)/DC
Voltage Rating : 300V AC(rms)/DC
Contact Resistance : 30mΩ Max.
Insulation Resistance : 1000MΩ Min
Withstanding Voltage : 1600V AC r.m.s
Temperature Range-Operating: -40°C~+105°C

Material and Plating

Insulator: Glass Filled Polyester (UL94V-0), Black
Contact: Copper Alloy/ Matte-Tin plated



Recommended P.C.Board Layout
General Tolerances ±0.05

 THIRD ANGLE PROJECTION	GENERAL TOLERANCES (UNLESS SPECIFIED)		APPROVE BY	DATE	PART NO.	ITEM NO.	 Building Technology Cornerstone	
	X. ±0.30	X.* ±5°	CHECKED BY	DATE	FPH57501-S02BK002-00	FPH57501		
	DESIGN UNITS METRIC	X.X ±0.20	X.X* ±2°	GISELLE	30/JAN/22	TITLE		REV 0
	SCALE 5:1	SIZE A4	X.XX ±0.15	X.XX* ±1°	DRAWN BY	DATE	THIS DRAWING CONTAINS INFORMATION THAT IS PROPRIETARY TO TXGA INDUSTRIAL ELECTRONICS(S.Z)CO.,LTD AND SHOULD NOT BE USED WITHOUT WRITTEN PERMISSION	
		X.XXX ±0.10	X.XXX* ±0.5°	CHERRY	30/JAN/22	SHEET NO. 1/1		